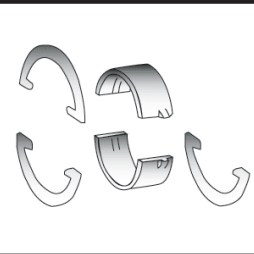
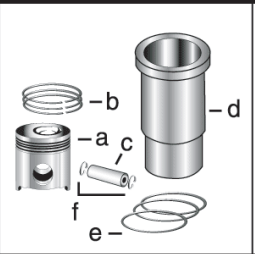


400 Series
Engine & Equipment
Model
6.404T/A



335,846 >

6 Cyl

Bore: 4.25 in
 108 mm
 Pin Ø: 1.61 in
 41 mm

Block (m):
 R49470, R49650, R59850,
 R72128, R87558

APPLICATIONS:

AGRICULTURAL
 4320 5440
 4430 6600
 4630 7700

CONSTRUCTION

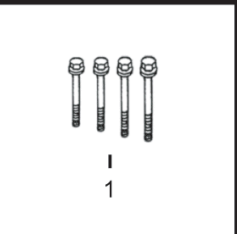
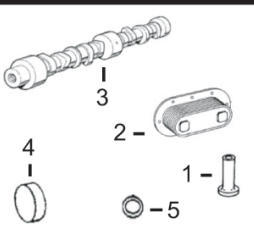
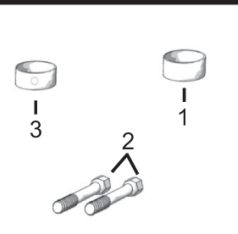
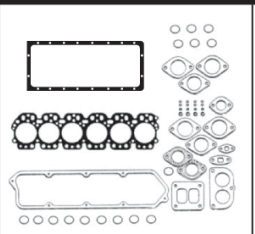
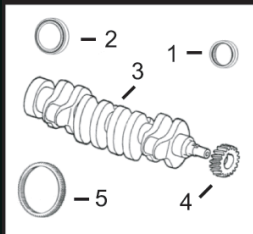
690B
 693C
 740

1) Engine O/H Kit Piston-Liner Kit Main Bearing Thrust Bearing Con Rod Bearing

2) Engine I/F Kit [TAR63272](#) [TAR74814](#) Std. [TAR77748](#) Std. [TAR45723](#) Std.
 Consists of: [TAR74816](#) .010 [TAR77750](#) .010 [TAR46396](#) .010

1) [TRG17892](#) a) [TAR54552](#) [TAR74817](#) .020 [TAR77751](#) .020 [TAR46397](#) .020
 2) [TIK17892](#) b) [TAR51741](#) [TAR74818](#) .030 [TAR77752](#) .030 [TAR46398](#) .030

Use 6 Use 1 Use 6
Thrust Washer
[TAR77747](#) Std.
[TAR77753](#) .007
 Use 3, Order Qty 1

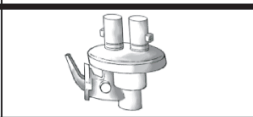


1) Front Seal 1) O/H Gasket Set 1) Bush, Con Rod 1) Cam Follower 1) Head Bolt Kit
 2) Rear Seal 2) Head Gasket Set 2) Bolt, Con Rod 2) Oil Cooler 2) Oil Cooler
 3) Crankshaft 3) Head Gasket 3) Bushing, Cam 3) Camshaft Kit 3) Camshaft Kit
 4) Crankshaft, Gear 4) Oil Pan Gasket 4) Plug, Camshaft 4) Plug, Camshaft 4) Plug, Camshaft
 5) Ring Gear 5) O'ring, Oil Cooler 5) O'ring, Oil Cooler

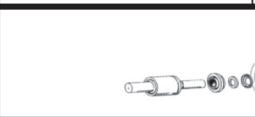
1) [TAR49025](#) 1) [TAR63269](#) 1) [TR42173](#) x6 1) [TR52773](#) 1) [TMX365](#) (1)
 2) [TRE520036](#) 2) [TAR63270](#) 2) [TR66452](#) x12 2) [TAR55394](#) 2) [TAR55394](#)
 3) [TRE53422](#) (2) 3) [TR48291](#) 3) [TR46903](#) x4 For T Engines For T Engines
 4) [TR26049](#) (23T) 4) [TR71918](#) [TAT25038](#) [TAT25038](#)
 5) [TR28811](#) (129T) For A Engines For A Engines
 3) [TAR100385](#) 4) [TR26115](#) 4) [TR26115](#)
 5) [TR47153](#) 5) [TR47153](#) 5) [TR47153](#)

Valve, Intake Valve, Exhaust Insert, Valve 1) Cap, Valve 1) Spring, Valve
 1) Intake 1) Intake 1) Intake 2) Lock, Valve 2) Rotator, Valve
 2) Exhaust 2) Exhaust 2) Exhaust 3) O'ring, Valve

[TR50358](#) Std. [TR50357](#) Std. 1) [TR78702](#) Std. 1) [TT20129](#) 1) [TR26125](#)
[TR55055](#) .003 [TR55056](#) .003 2) [TR50356](#) Std. 2) [TT20077](#) 2) [TRE11410](#)
[TR55057](#) .015 [TR55058](#) .015 3) [TR87627](#)



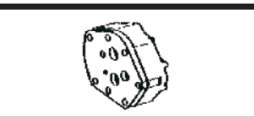
Thermostat
[TAR48675](#) 180° F



Fuel Transfer Pump
 Not Used



Water Pump Repair Kit
 Without Impeller With Impeller
[See Chart](#)



Pump, Oil, Quad Transmission
[TRE20918](#)
 For Tractors
 4430,4630, 5440

(1) [TMX365](#) Consists of: [TR88042](#) x6, [TR88043](#) x5, [TR88044](#) x8, [TR88045](#) x7.
 (2) [TRE53422](#) will require front key [TR116311](#) for the front damper.