

500 Series

**Engine & Equipment
Model**

6.101A/T

> 499,999

6 Cyl

Bore: 5.125 in
130 mm
Pin Ø: 2.00 in
50.8 mm

Block (m):

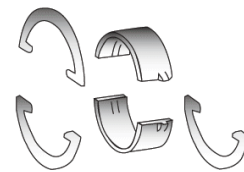
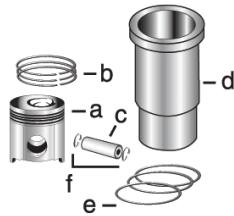
R75934, R87552, R88217
R98554

APPLICATIONS:

AGRICULTURAL

8760

8870



1) Engine O/H Kit

Piston-Liner Kit

Main Bearing

Thrust Bearing

Con Rod Bearing

2) Engine I/F Kit

TRE40476

Consists of:

- a) [TRE20275](#)
- b) [TAR82355](#)
- c) [TR64451](#)
- d) [TR77640](#)
- e) [TAR72351](#)
- f) [TN51168](#)

- [TAR101268](#) Std.
- [TAR104122](#) .010
- [TAR104123](#) .020
- [TAR104124](#) .030

Use 6

- [TAR101269](#) Std.
- [TAR104126](#) .010
- [TAR104127](#) .020
- [TAR104128](#) .030

Use 1

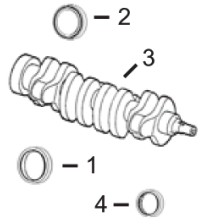
Thrust Washer

- [TAR89622](#) Std.
- [TAR89971](#) .007

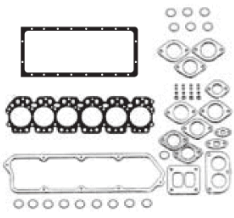
Use 3, Order Qty 1

- [TAR101271](#) Std.
- [TAR104130](#) .010
- [TAR104131](#) .020
- [TAR104132](#) .030

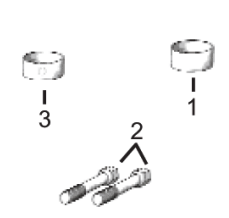
Use 6



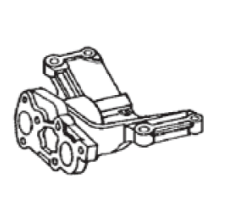
**1) Front Seal
2) Rear Seal**



1) O/H Gasket Set



**1) Bush, Con Rod
2) Bolt, Con Rod
3) Bushing, Cam**



Pump, Oil



Thermostat

**3) Crankshaft
4) Rear Gear**

**2) Head Gasket Set
3) Head Gasket
4) Oil Pan Gasket**

- 1) [TAR49025](#)
- 2) [TRE13310](#)
- 3) [TAR92533](#)
- 4) [TR63326](#)

- 1) [TRE37416](#)
- 2) [TRE37417](#)
- 3) [TRE34009](#)
- 4) [TR71919](#)

- 1) [TR69045](#) x6
- 2) [TR66453](#) x12
- 3) [TR87561](#) x4

[TRE60622](#) (1)

[TAR48675](#) 180° F

Valve, Intake

Valve, Exhaust

Insert, Valve
1) Intake
2) Exhaust

1) Lock, Valve
2) Shield, Valve

1) Spring, Valve
2) Rotator, Valve
3) Cap, Valve

[TR101304](#)

[TR101305](#)

N/A

1) [TT20077](#)
2) [TR102882](#) x6

- 1) [TR91822](#)
- 2) [TRE11410](#)
- 3) [TT20129](#)

