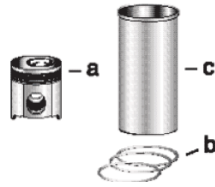


**Engine & Equipment Application**

**1106 - E60TA (VK)**

Bore: 3.9370 in  
100.00 mm



**1) Engine O/H Kit**

**Piston-Liner Kit**

**Main Bearing Set**

**Con Rod Bearing Set (3)**

**Thrust Washer Set**

**2) Basic Engine Kit**

**PCK0162**  
Consists of:  
a) [P4115P001](#)  
b) [PUPRK0001](#)  
c) [P3135X062](#)  
**6 Per Engine**

[PU5MB0030](#) Std.  
[PU5MB0030A](#) .010  
[PU5MB0030B](#) .020  
[PU5MB0030C](#) .030  
**Set of 7 Pairs**

[PU5ME0025](#) Std.  
[PU5ME0025A](#) .010  
[PU5ME0025B](#) .020  
[PU5ME0025C](#) .030  
**Set of 6 Pairs**

[P31137551/61](#)  
**Set of 2 Pairs**

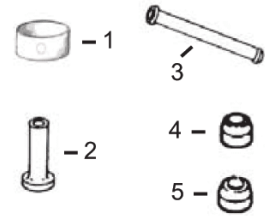
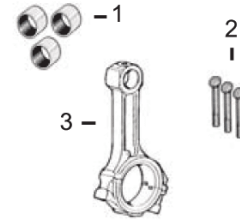
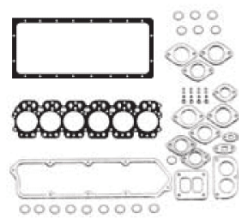
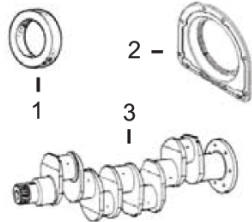
**APPLICATIONS:**

**MF AGRICULTURAL**

- 5465/6465 (VK31483/VK31486)
- 5465/6465 (VK31505)
- 6360 (VK31483)
- 6370 (VK31484)
- 6380 (VK31485)
- 6475 (VK31484)
- 6480 (VK31485)
- 6475/7475 (VK31487/VK31503)
- 6475/7475 (VK31506)
- 6480/7480 (VK31507)
- 7465 (VK31486/VK31505)

**McCORMICK**

Wheeled Tractors  
(VK 37779 to 37787)



**1) Front Seal**  
**2) Rear Seal**

**1) Top Gasket Set**  
**2) Bottom Gasket**

**1) Bush, Con Rod**  
**2) Bolt, Con Rod**

**1) Bushing, Cam**

**3) Crankshaft Kit**

**3) Head Gasket**

**3) Con Rod**

**2) Tappet**  
**3) Push Rod**  
**4) Seal, Exhaust Valve**  
**5) Seal, Intake Valve**

1) [P2418F436](#)  
2) [P2418F701](#)  
3) [PZZ90213](#) (1)  
[PZZ90228](#) (2)

1) [PU5LT0349](#)  
2) [PU5LB0374](#) (4)  
3) [P3681E043](#)

1) [P3112A005](#) x6  
2) [P3212V003](#) x12  
3) [P4115C314](#) (5)

1) [P31134132](#) x1  
2) [P31434163](#)  
3) [P31434307](#)  
4) [P2418M505](#) x6  
5) [P2418M506](#) x6

**Valve Train Kit**

1) Valve, Intake  
2) Valve, Exhaust

3) Guide, Valve  
a) Intake  
b) Exhaust

4) Spring, Valve Inner & Outer

5) Lock, Valve

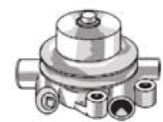
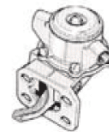
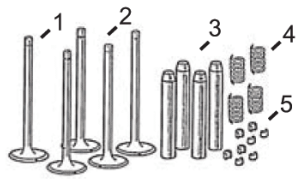
**PVTK620**

1) [P3142L081](#) x6  
2) [P3142D031](#) x6

a) [P3313A012](#) x6  
b) [P3318A705](#) x6

4) [P3174P409](#) x12

5) [P3142W004](#) x24



1) Oil Pump  
2) Oil Cooler

Lift Pump

Water Pump

1) [P4132F067](#)  
2) [P2486A993](#)

[PULPK0036](#)

[PU5MW0196](#)

(1) To ESN U090153J.

(2) From ESN U090154J.

(3) For ESN prior to U090154J use [PU5ME0003](#).

(4) For Builds (VK37779 to VK37787) use U5L B0370.

(5) Grade J, Color Coded Green.