

**Engine & Equipment  
Application**

**404C-22**  
(HP, HPC, HPG)

NATURALLY ASPIRATED

**SHIBAURA®**  
**N844L-C**

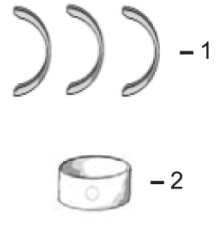
4 Cyl

Bore: 3.3 in  
84.00 mm

Stroke: 3.9 in  
100.00 mm

Displacement: 135 in<sup>3</sup>  
2.216 Liter

Compression Ratio: 23.3:1



1) Engine O/H Kit

Piston Kit  
Ring Set

Main Bearing Set

Con Rod Bearing Set

1) Thrust Washer  
2) Crank Bushing

2) Basic Engine Kit

[P115017491](#) Std.  
[P115017491B](#) 0.50

[P198586140](#) Std.  
[P198586150](#) .010  
[P198586160](#) .020

[PU5ME0011](#) Std.  
[PU5ME0011A](#) .010  
[PU5ME0011B](#) .020

1) [P199266200/10](#)  
Set of 3 Pcs

1) [POK404](#) Std.  
[POK405](#) 0.50

[P115107970](#) Std.  
[P115107970B](#) 0.50

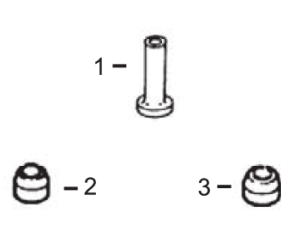
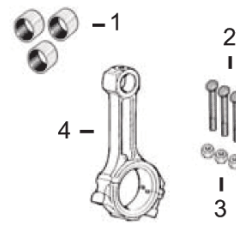
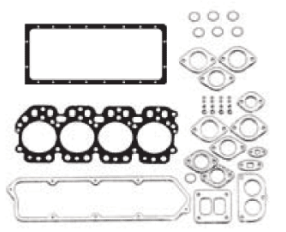
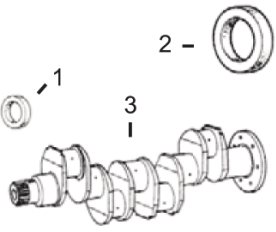
2) [P198517222](#) Std.  
[P198517226](#) .010  
[P198517229](#) .020

2) [PBK404](#) Std.  
[PBK405](#) 0.50

4 Per Engine

Set of 4 Pairs

Set of 4 Pairs



1) Front Seal  
2) Rear Seal

1) O/H Gasket Set  
2) Cylinder Head Gasket  
3) Seal Rocker Box  
4) Seal, Cyl Head Cover  
5) Oil Pan Gasket

1) Bush, Con Rod  
2) Bolt, Con Rod  
3) Nut, Con Rod  
4) Con Rod

1) Tappet  
2) Seal, Intake Valve  
3) Seal, Exhaust Valve

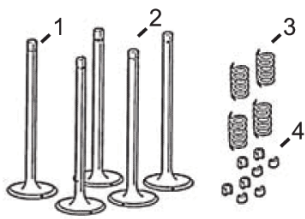
3) Crankshaft Kit

1) [P198636160](#)  
2) [P050209083](#)  
3) [P115256990](#)

1) [PU5LC0017](#) (1)  
2) [P111147741](#)  
3) [P120996130](#)  
4) [P111996401](#)  
5) [P110996920](#)

1) [P198517265](#) x4  
2) [P115176140](#) x8  
3) [P020109120](#) x8  
4) [P115026330](#)

1) [P120116160](#)  
2) [P120406070](#) x4  
3) [P120406050](#) x4



Valve Train Kit

1) Valve, Intake  
2) Valve, Exhaust

3) Spring, Valve

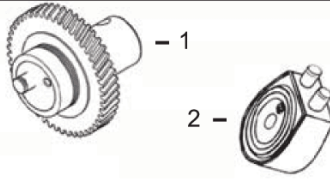
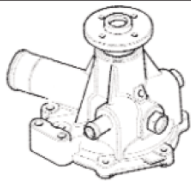
4) Lock, Valve

[PVTK440](#)

1) [P120166350](#) x4  
2) [P120176360](#) x4

3) [P198216700](#) x8

4) [P120226070](#) x16



Water Pump

1) Oil Pump  
2) Oil Cooler

Thermostat

Repair Sleeve

[P145017951](#)

1) [PU5MK8266](#)  
2) [P2486A218](#) (2)

[P145206182](#)

[84RS](#)

(1) Does not include Crankshaft Oil Seals.

(2) "HP" build ONLY.