

# Free Design

## Pomegranate



Print off this page and trace the design below onto your fabric with a waterproof or erasable transfer pen or use the prick and pounce method. Go over the design with a black pen first if you can't see it clearly through the fabric. Frame the fabric into your embroidery hoop placing a backing fabric behind your embroidery fabric to give you a more stable ground to work on.

### Outline design for transfer



### Inspiration

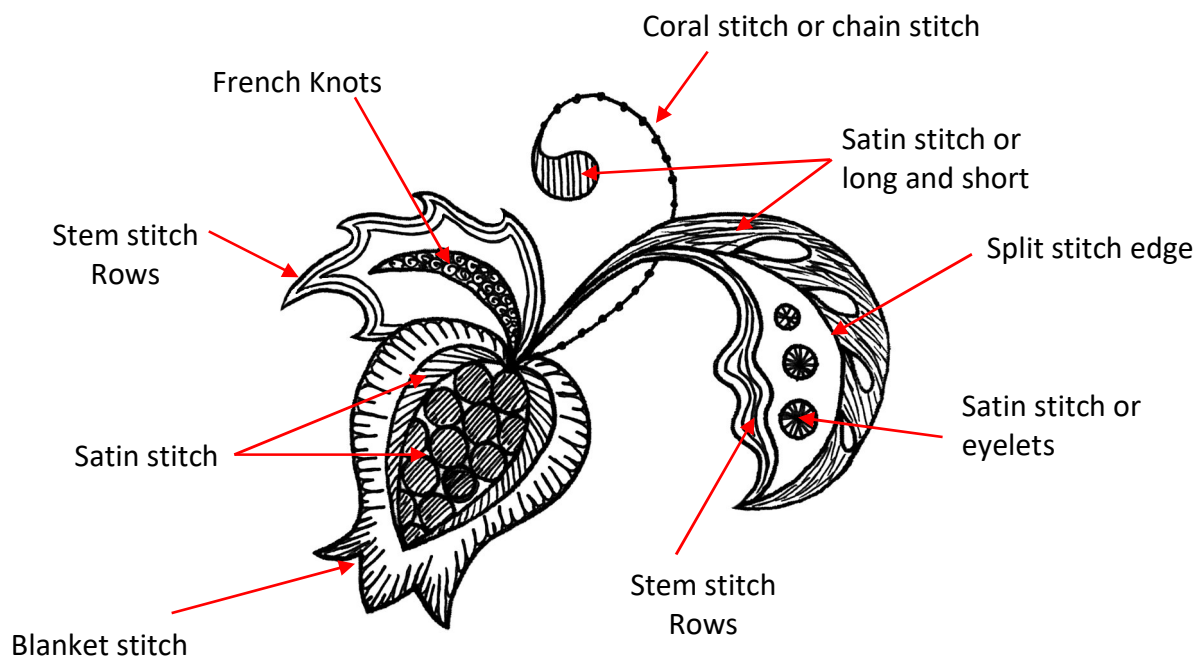
This design came from my sketchbook when I designed some simple designs for the crewelwork embroidery technique. The stitch plan on the next page shows some stitch suggestions but check out my video on this and use the outline designs to develop your own stitch plan! I used Madeira Burmilana threads to stitch mine in but you can use any threads and colours you like; try them first on a small piece of sample fabric to test out some ideas...

Check out our other videos on how to frame up your fabric, how to thread your needles and how to start and finish your threads; just search **Sarah Homfray Embroidery** on YouTube to find our channel and click on the red **SUBSCRIBE** button to bookmark our page.

## You will need:-

A printer to print off this design! (I printed it straight onto tracing paper to do a pricking).

## Stitch plan



## Threads

This would work nicely in lots of different threads. Try stranded cottons, silks, crewel wool or linen! I used the following Madeira Burmilana threads from our shop; Reds: 3492 and 3990, orange 3804, yellow 3724 and greens 3903 and 3980.

## Fabric

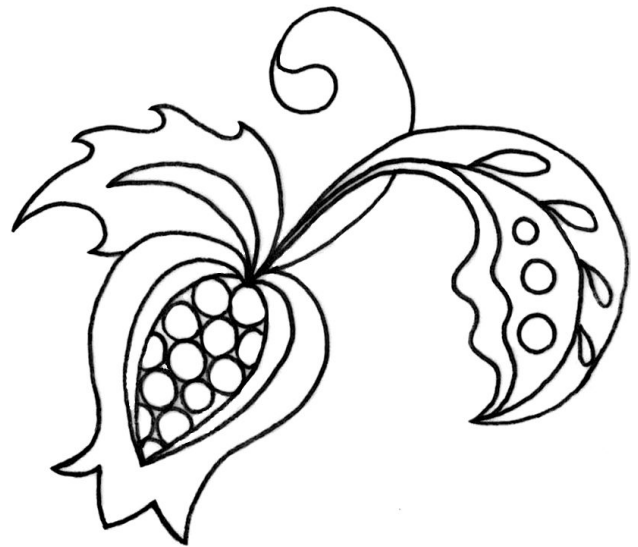
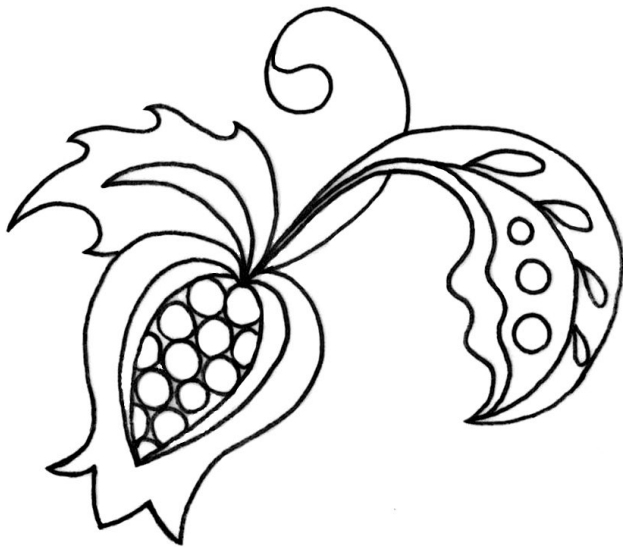
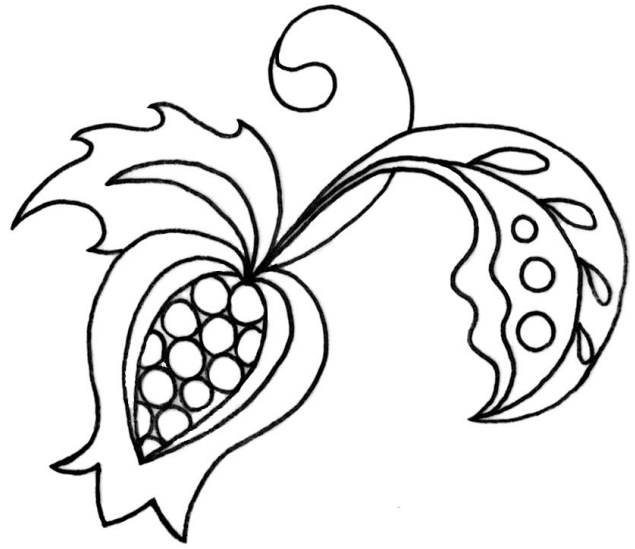
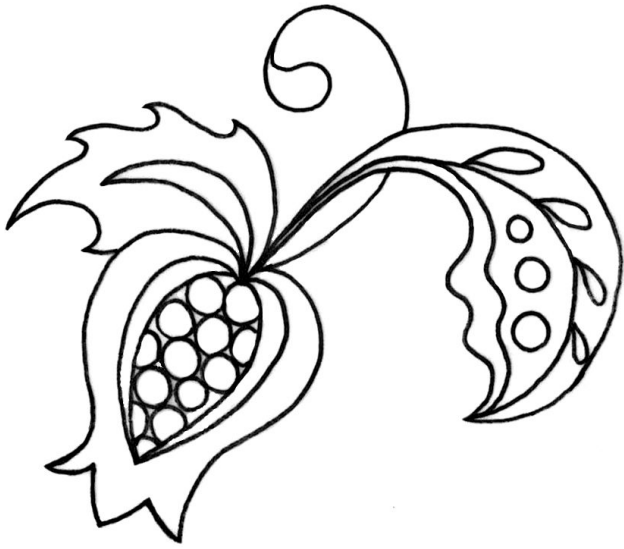
I used antique white cotton with a cotton backing fabric to stitch this design on but anything made of natural fibres such as cotton, linen or linen/cotton blend will work well.

## Other items you will need:

- Embroidery scissors
- Needles to match the thread you are using
- Embroidery hoop (this design is 8cm/3 1/4" diameter)
- Waterproof or erasable design transfer pen
- Optional - Versatile table clamp to hold the frame still

Use the outline designs on the next page to help you choose your own stitches and colour schemes! Check out our video playlist 'Bunch of fives' for more ideas on what stitches to use where and our colour video 'Essential guide to using colour in embroidery' to help you with your colour choices.

**Try out some different stitch plans and practice some colour ways!**



**Sarah is happy for you to use this design for your own personal use but not for any commercial use please without Sarah's permission (e.g. selling it on, teaching, selling the finished embroidery etc.)**