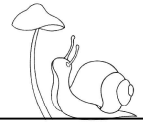


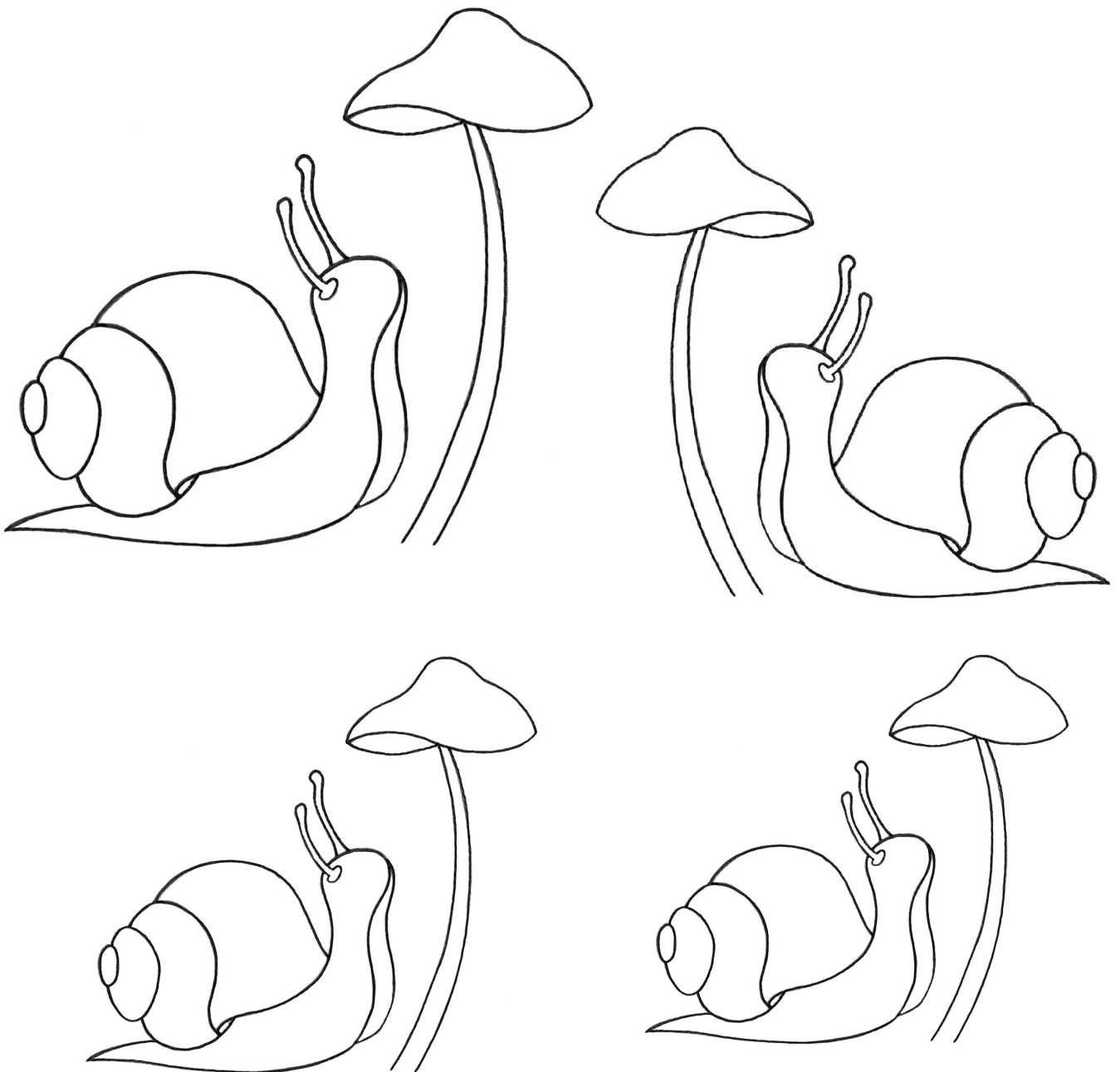
Free Design

Snail and toadstool



Print off this page and trace your chosen snail design below onto your fabric with a waterproof or erasable transfer pen or use the prick and pounce method. Go over the designs with a black pen first if you can't see them clearly through the fabric. Frame the fabric into your embroidery hoop placing a backing fabric behind your embroidery fabric to give you a more stable ground to work on.

Outline designs for transfer



Inspiration

This cute but simple design is great for beginners to practice your stitches on or why not try it in a more advanced technique?

Check out our '**12 stitches you should know**' video for some great stitches to use (and to see the stitched snail using all 12 of them!), and other videos on how to frame up your fabric, how to thread your needles and how to start and finish your threads; just search **Sarah Homfray Embroidery** on YouTube to find our channel and click on the red **SUBSCRIBE** button to bookmark our page.

You will need:-

A printer to print off this design!

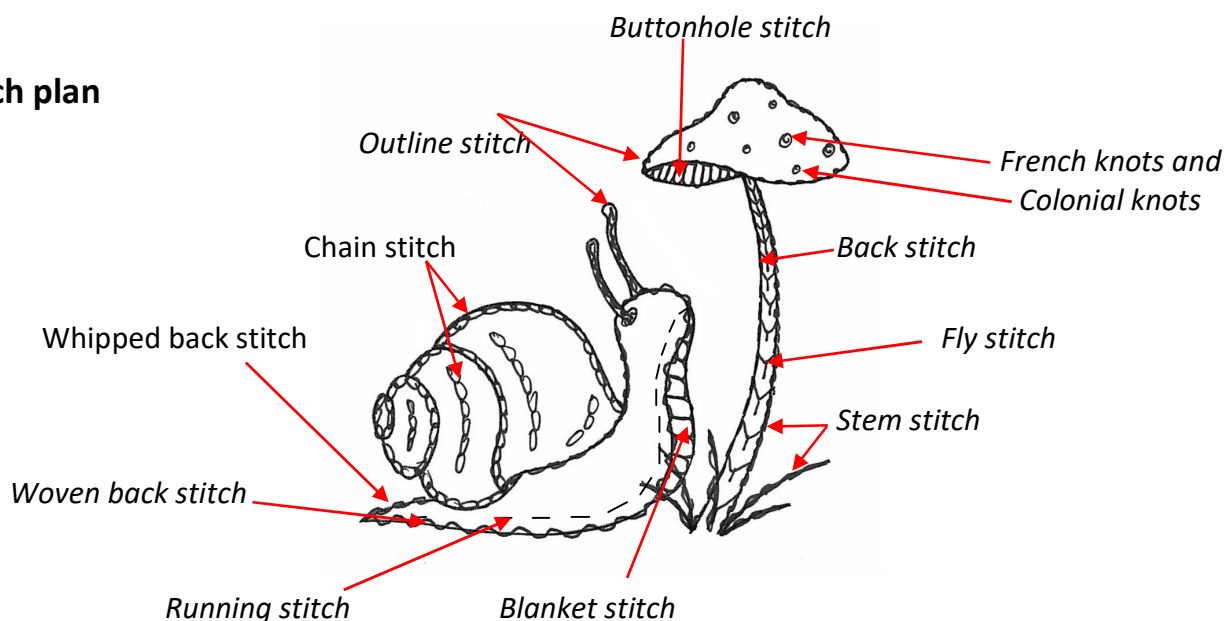
Threads and fabric

I used Perlé No. 8 thread for stitching this little snail but you can use any threads you like; why not see if you have a shiny thread for the shell? I used white linen with a cotton backing fabric to stitch my snail on but anything made of natural fibres such as cotton, linen or linen/cotton blend will work well.

Other items you will need:

- Embroidery scissors
- Needles to match the thread you are using
- Embroidery hoop or stretcher bar frames
- Waterproof or erasable design transfer pen/pencil

Stitch plan



Sarah is happy for you to use this design for your own personal use but not for any commercial use please without Sarah's permission (e.g. selling it on, teaching, selling the finished embroidery etc.)