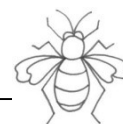


Free info sheet

Satin stitch



Satin stitch – getting technical

Satin stitch isn't a difficult stitch to do but there are a few things worth knowing about it to help you create really neat looking satin stitch.

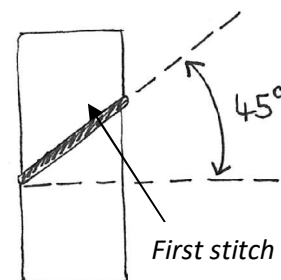
- **Slanted satin stitch is easier to work than straight satin stitch.**

This is all to do with angles which we will talk about soon but if you have the choice, work a slanted satin stitch (see image, right)! See page two for how to work straight satin stitch.



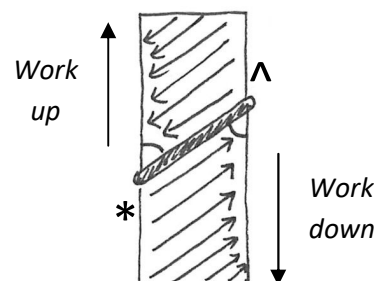
- **Start your satin stitch in the middle of your shape.**

It's much easier to set the right angle if you start in the middle of the shape or if you have a tapering shape then nearer to the widest end. Once you have set the angle then you can follow this. Set your stitch angle at about 45 degrees. There's no need to get the protractor out but roughly 45 degrees is a good angle!

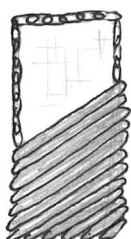
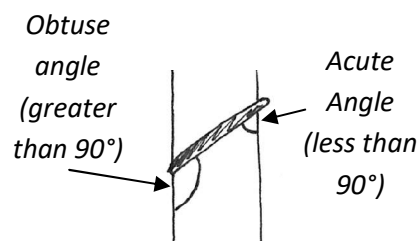


- **Learn which side to bring your needle out of the fabric on for the direction you are stitching in.**

This is where it can get a bit technical! If you are working down the shape from your first stitch then come out of the fabric with your needle on the left (*) and take it down into the fabric on the right hand side (follow the arrows!). When you have finished this half, go back to the middle and work upwards now coming out of the fabric on the right hand side (^) and down on the left.



By doing this, you are always pointing your needle into the acute angle which keeps your stitches at a 45 degree angle.



- **Stitch your satin stitch over a row of split stitch around the edge of your design.**

Work a row of split stitch all the way around the edge of your design first then work your satin stitches over the top of this, keeping the stitches close to the split stitch. This will give a nice neat edge to your satin stitch.

Working straight satin stitch

There are times when a slanted satin stitch isn't appropriate and you need to work your satin stitches horizontally or vertically across your shape (see image right).

In this instance, again start in the centre so you can work your first stitch accurately. It doesn't matter now which side you come up and down on as you want all of your stitches to lie straight, across the shape.



Bring your needle straight up on one side but then just angle it under the previous stitch on the other side a little to keep the stitches nice and close to each other.

This is a bit harder to do neatly than slanted satin stitch so working a split stitch underneath as mentioned on page 1 will really help to keep the edges nice and neat.

Trouble shooting satin stitch

- **I've lost my angle**

If you find your first angle was great but then your stitches are starting to flatten themselves out then you are coming up on the wrong side of your shape (therefore pointing your needle into the obtuse angle). Bring the needle up on the other side and the stitches should stay at a nice sharp angle.

- **I can see the fabric through the stitches**

Your stitches aren't close enough together. You can also try using a thicker thread for better coverage

- **My edges aren't very neat**

If you are having trouble getting the edges of your satin stitch nice and smooth make sure you are using the split stitch method underneath your satin stitch. The stitching underneath acts as a guide and helps to raise the edge up making the edges look much smoother.

Also make sure that you tuck your needle underneath the previous stitch to help smooth out the edges further and that the needle is the right size for the thread you are using!

This instruction sheet is the copyright of Sarah Homfray 2021. You may use it for your own personal use but not for any commercial uses such as teaching, reproducing in kits etc. without Sarah's permission.