

## To make a hanging inner pocket that tucks in under the tote bag facing/top turning.

A good choice if you only want a small inner pocket and don't want to see the stitching on the outside that a patch inner pocket would display

**First:** Cut the small pocket pattern x1 on the fold (one short edge of the pattern on the fold)

Double fold and press one short edge e.g. mark chalk line 1.5cm from edge and press to line giving a 0.75cm turn, then mark 3cm from edge and press to line giving a 1.5cm turn



Stitch turning down through the 3 layers – approx 2mm in from the inner fold  
*Option to zig zag or overlock the 2 long sides to stop fraying*



Fold pocket in half right sides together with the unpresed/folded end sticking up 2-3cm above the folded end. Stitch one long side through both layers with a 1cm seam allowance



Open up and press seam allowance towards back of pocket.  
Tuck seam allowance in half under itself, fabric-glue or pin & stitch down, so raw edge is hidden

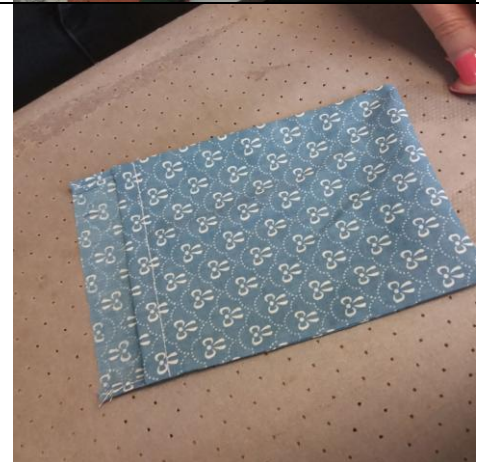


Sew other side the same



Turn through and press – ready to insert under bag facing when ready

When bag is almost finished and all you have left to do is stitch the facing down on the zig zagged edge. Place the remaining raw short edge of this pocket under the facing with a 1cm overlap. Stitch facing down approx 0.5cm from the zig zagged edge of the facing, securing pocket in as you go



This instruction sheet was thrown together by Kat at Sew In Brighton Sewing School in response to a student only wanting a small pocket inside the bag and no stitching on the outside!

[www.sewinbrighton.co.uk](http://www.sewinbrighton.co.uk) May 2019