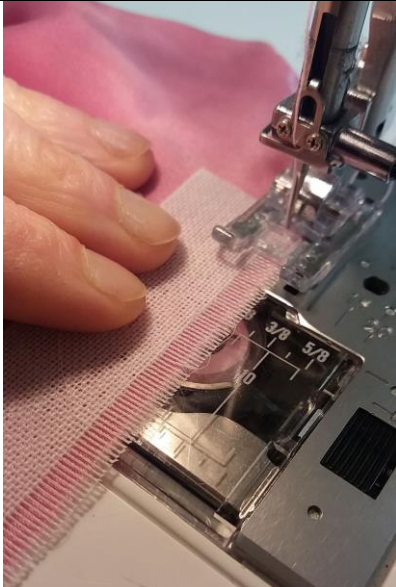


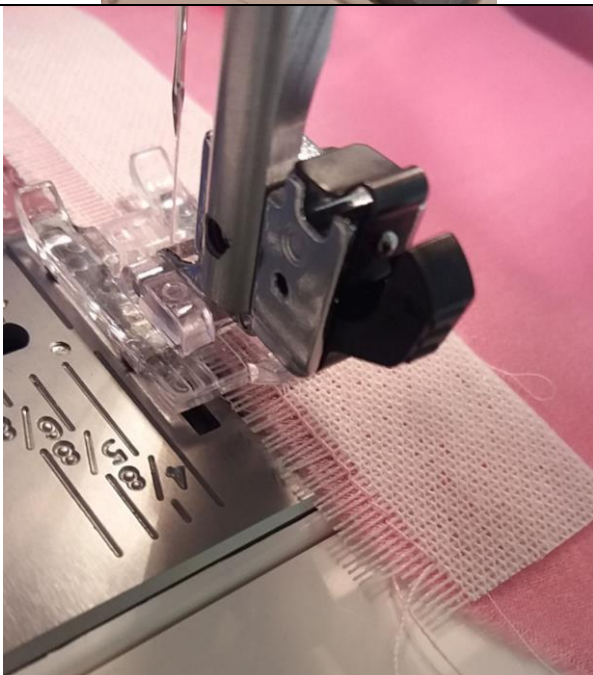
How to hem using frayed Banrol Belt Backing

Banrol Belt Backing – can be frayed on one edge, and used to turn edges with more stability and a neater finish. Use on silk, crepe, satin, viscose and any other slippery and sheer fabrics. You can buy it at:

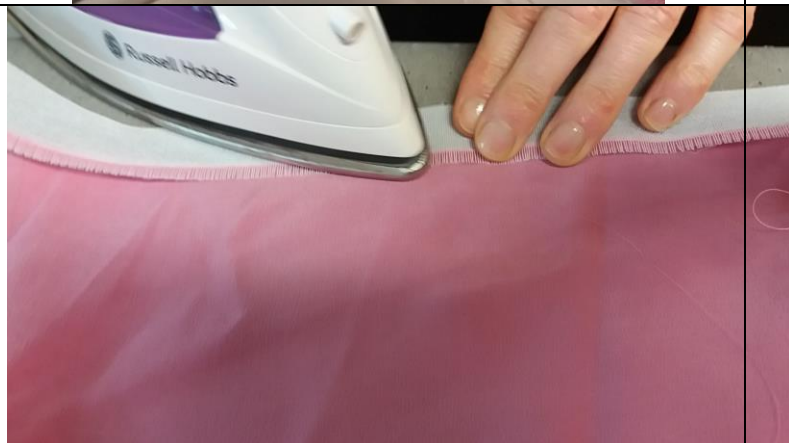
<https://englishcouture.co.uk/shop/banrol-belt-backing-ech58/> (search Banrol on English Couture website if this link is out of date). It costs (price correct in Dec '22) 89p per mtr plus £4.15 P&P – buy the 25mm wide one. Get 3-4 metres (or more) in case you have a large hem to turn up at some point. It can be re-used many times, but I plan on using this for the rest of my life so I have bought loads in case they stop selling it at some point!!



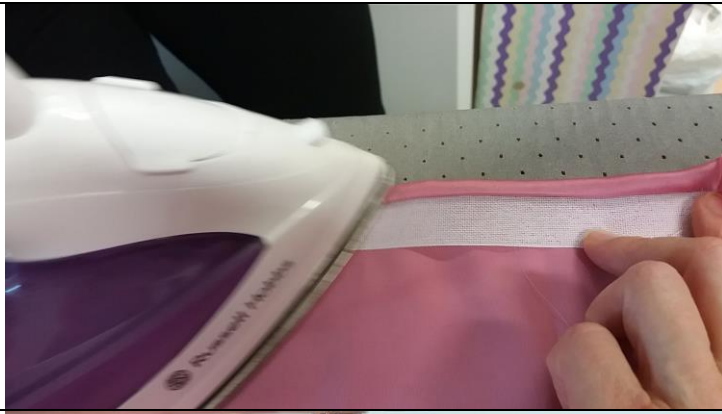
- Tear off a few threads of the Banrol up to just over the amount you first want to turn over, e.g. 8-9mm for a 0.75cm hem, to create a fringed edge on the Banrol
- Place it on THE RIGHT SIDE of the fabric lining up the edges
- If you need to sew in a circle e.g. for a hem – overlap the Banrol into onto itself a circle as you get back to the beginning



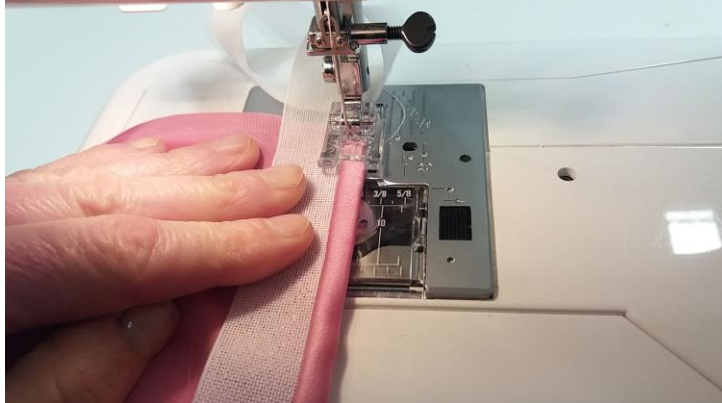
1. Line up the raw /Banrol edge with something on the foot then move your needle to the required distance from the edge eg 0.75cm for a 0.75cm hem
2. Stitch where the Banrol fabric fringing starts (ordinary 2.8 straight stitch)



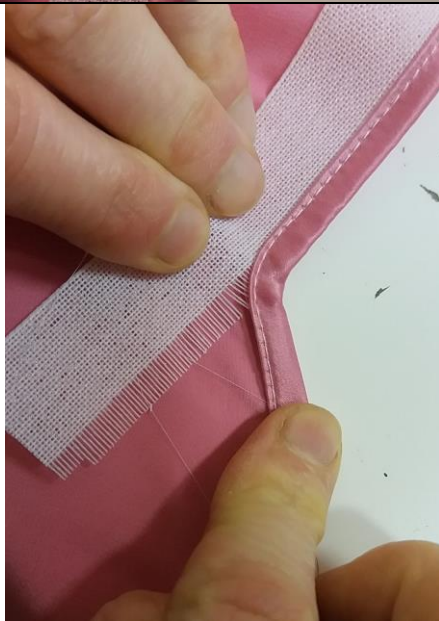
1. With wrong side of fabric facing upwards, flip out the Banrol, and the edge of your fabric will turn in towards the inside of your fabric by 0.75cm.
2. Press



1. Flip over the Banrol again onto the wrong side of your fabric, therefore turning over another 0.75cm
2. Press



1. Edge stitch with the Banrol and the wrong side of your main piece of fabric facing you/upwards.
2. To get an even stitch from the edge all the way round, line up the folded edge of your fabric with a point on your presser foot (eg inside right 'toe'), then move needle to right position, then keep it all aligned like this while you sew
3. Press



Tear off the Banrol carefully



Press