

ABRSM Grade 4 Flute scales & Arpeggios

At grade 4, scales should be prepared to a minimum speed of $\text{♩} = 72$
and arpeggios to $\text{♩} = 100$

Tongued and slurred articulations are required.

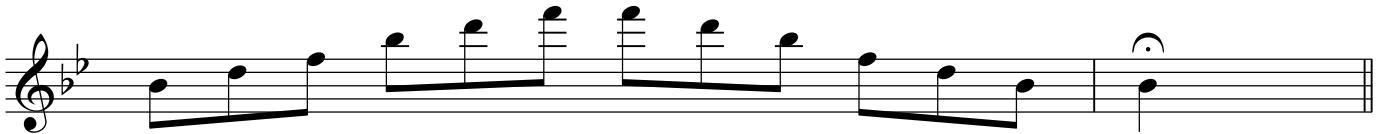
All scales & arpeggios should be known from memory.

At grade 4 EITHER harmonic OR melodic minors can be prepared.

Bb major scale (a twelfth)

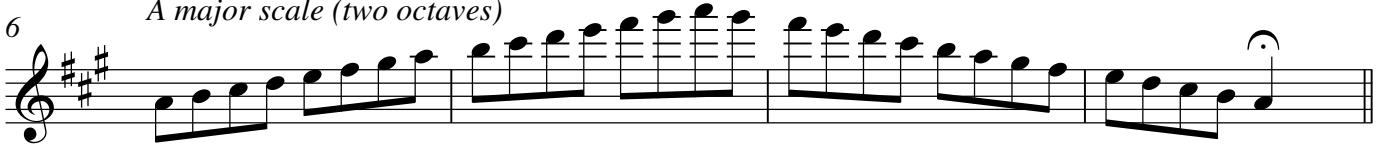


Bb major arpeggio (a twelfth)

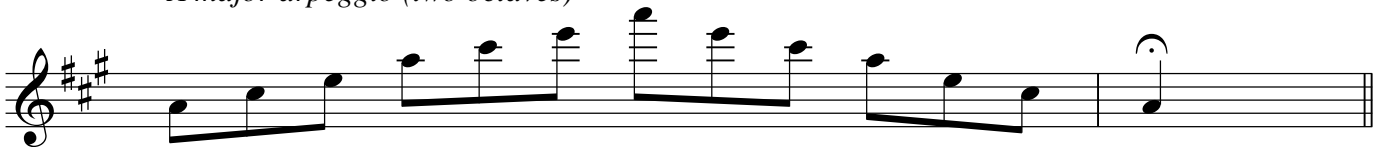


6

A major scale (two octaves)



A major arpeggio (two octaves)

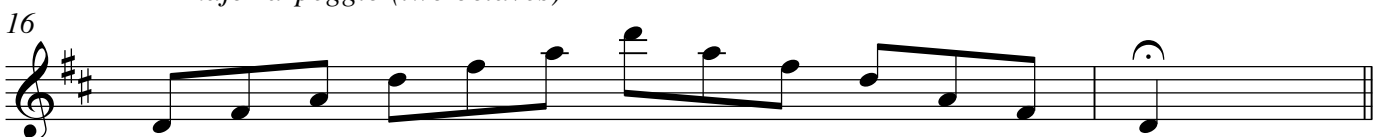


12

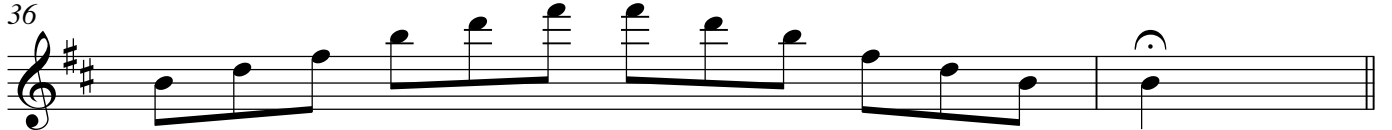
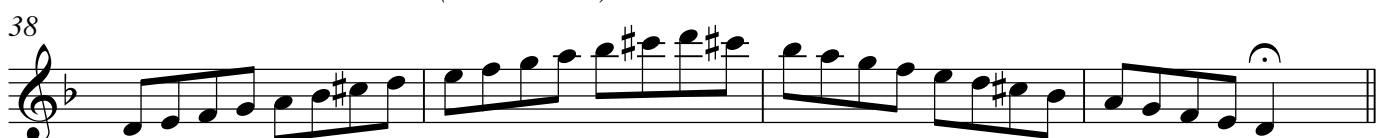
D major scale (two octaves)



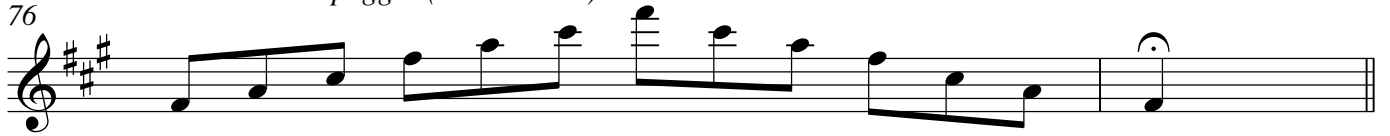
D major arpeggio (two octaves)



16

18 *C major scale (two octaves)*22 *C major arpeggio (two octaves)**Eb major scale (two octaves)*28 *Eb major arpeggio (two octaves)*30 *B minor harmonic scale (a twelfth)*33 *B minor melodic scale (a twelfth)*36 *B minor arpeggio (a twelfth)**D minor harmonic scale (two octaves)*

D minor melodic scale (two octaves)*D minor arpeggio (two octaves)**G minor harmonic scale (two octaves)**G minor melodic scale (two octaves)**G minor arpeggio (two octaves)**C minor harmonic scale (two octaves)**C minor melodic scale (two octaves)**C minor arpeggio (two octaves)**F# minor harmonic scale (two octaves)*

F# minor melodic scale (two octaves)*F# minor arpeggio (two octaves)**Chromatic scale starting on D (two octaves)**Chromatic scale starting on F (two octaves)**Dominant seventh in the key of G (two octaves)*