

# ABRSM Grade 4 Saxophone scales & Arpeggios

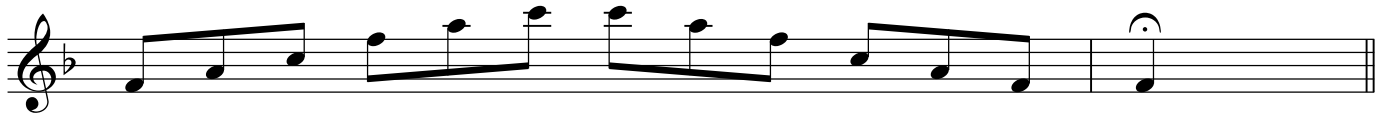
At grade 4, scales should be prepared to a minimum speed of ♩ = 72  
and arpeggios to ♪ = 100

Tongued and slurred articulations are required.  
All scales & arpeggios should be known from memory.  
At grade 4 EITHER harmonic OR melodic minors can be prepared.

*F major scale (a twelfth)*



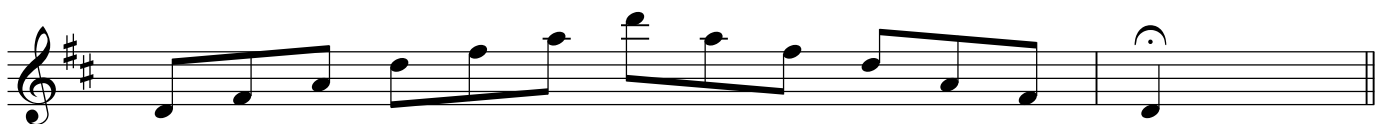
*F major arpeggio (a twelfth)*



6 *D major scale (two octaves)*



*D major arpeggio (two octaves)*

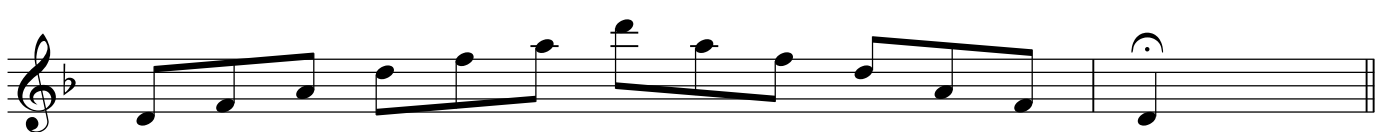


12 *A major scale (one octave)*



14 *A major arpeggio (one octave)*



*C major scale (two octaves)**C major arpeggio (two octaves)**E $\flat$  major scale (two octaves)**E $\flat$  major arpeggio (two octaves)**D minor harmonic scale (two octaves)**D minor melodic scale (two octaves)**D Minor arpeggio (two octaves)**F# minor harmonic scale (a twelfth)**F# minor melodic scale (a twelfth)*

*F# minor arpeggio (a twelfth)*

43

A musical staff in treble clef with a key signature of two sharps (F# and C#). The notes are F#, A, C#, E, G, B, A, C#, F#, and A. The first eight notes are beamed eighth notes, and the last two are a half note.

*G minor harmonic scale (a twelfth)*

45

A musical staff in treble clef with a key signature of one flat (F). The notes are G, A, Bb, C, D, Eb, F, G, Ab, Bb, C, D, Eb, F, G. The first eight notes are beamed eighth notes, and the last two are a half note.

*G minor melodic scale (a twelfth)*

48

A musical staff in treble clef with a key signature of one flat (F). The notes are G, A, Bb, C, D, Eb, F, G, Ab, Bb, C, D, Eb, F, G. The first eight notes are beamed eighth notes, and the last two are a half note.

*G minor arpeggio (a twelfth)*

51

A musical staff in treble clef with a key signature of one flat (F). The notes are G, Bb, D, F, G, Bb, D, F, G. The first eight notes are beamed eighth notes, and the last two are a half note.

*B minor harmonic scale (two octaves)*

53

A musical staff in treble clef with a key signature of two sharps (F# and C#). The notes are B, C, D, E, F#, G, A, B, C, D, E, F#, G, A, B, C, D, E, F#, G, A, B, C, D, E, F#, G, A, B. The first eight notes are beamed eighth notes, and the last two are a half note.

*B minor melodic scale (two octaves)*

57

A musical staff in treble clef with a key signature of two sharps (F# and C#). The notes are B, C, D, E, F#, G, A, B, C, D, E, F#, G, A, B, C, D, E, F#, G, A, B, C, D, E, F#, G, A, B. The first eight notes are beamed eighth notes, and the last two are a half note.

*B minor arpeggio (two octaves)*

61

A musical staff in treble clef with a key signature of two sharps (F# and C#). The notes are B, D, F#, G, B, D, F#, G, B. The first eight notes are beamed eighth notes, and the last two are a half note.

*C minor harmonic scale (two octaves)*

63

A musical staff in treble clef with a key signature of three flats (Bb, Eb, and Ab). The notes are C, D, Eb, F, G, Ab, Bb, C, D, Eb, F, G, Ab, Bb, C, D, Eb, F, G, Ab, Bb, C, D, Eb, F, G, Ab, Bb, C. The first eight notes are beamed eighth notes, and the last two are a half note.

*C minor melodic scale (two octaves)*

67

A musical staff in treble clef with a key signature of three flats (Bb, Eb, and Ab). The notes are C, D, Eb, F, G, Ab, Bb, C, D, Eb, F, G, Ab, Bb, C, D, Eb, F, G, Ab, Bb, C, D, Eb, F, G, Ab, Bb, C. The first eight notes are beamed eighth notes, and the last two are a half note.

*C minor arpeggio (two octaves)*

71

*Chromatic scale starting on C (two octaves)*

73



76

*Chromatic scale starting on D (two octaves)*

80



84

*Dominant seventh in the key of G (two octaves)*

87

