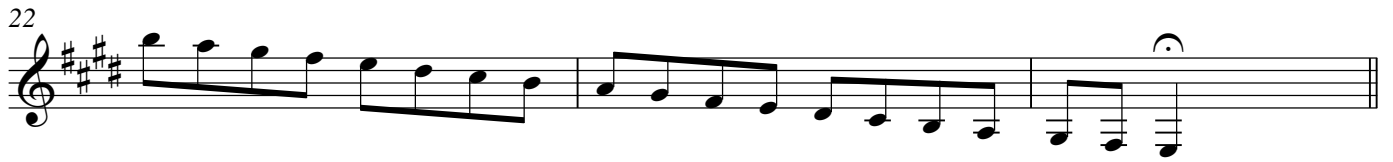




19 *E major scale (three octaves)*25 *E major arpeggio (three octaves)**D major scale (two octaves)**D major arpeggio (two octaves)**Db major scale (two octaves)**Db major arpeggio (two octaves)*39 *Eb major scale (two octaves)**Eb major arpeggio (two octaves)**Bb minor harmonic scale (two octaves)*

*Bb minor melodic scale (two octaves)*

49

*Bb minor arpeggio (two octaves)**A minor harmonic scale (two octaves)**A minor melodic scale (two octaves)**A minor arpeggio (two octaves)**G# minor harmonic scale (two octaves)*

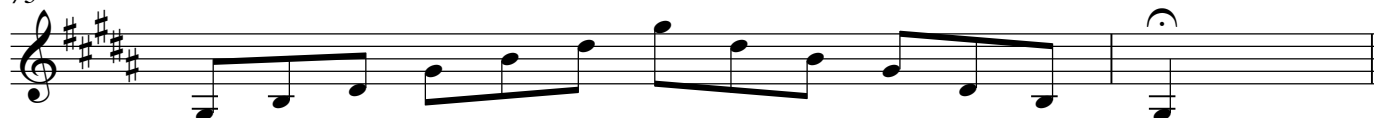
65

*G# minor melodic scale (two octaves)*

69

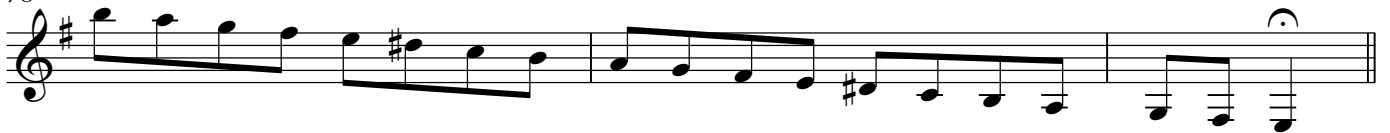
*G# minor arpeggio (two octaves)*

73



*E minor harmonic scale (three octaves)*

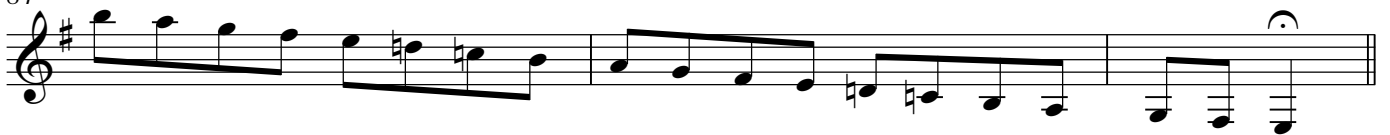
78

*E minor melodic scale (three octaves)*

81



84

*E minor arpeggio (three octaves)*

87

*B minor harmonic scale (two octaves)*

89

*B minor melodic scale (two octaves)*

93

*B minor arpeggio (two octaves)*

97



*C# minor harmonic scale (two octaves)*

99

*C# minor melodic scale (two octaves)*

103

*C# minor arpeggio (two octaves)*

107

*Chromatic scale starting on middle C (two octaves)*

112

*Chromatic scale starting on F (two octaves)*

116



119

*Chromatic scale starting on A (two octaves)*

123



126



130 *Chromatic scale starting on E (three octaves)*



134



137



140 *Dominant seventh in the KEY of Bb (two octaves)*



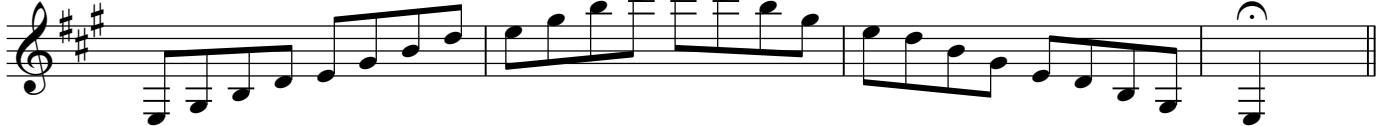
*Dominant seventh in the KEY of D (two octaves)*

143



*Dominant seventh in the KEY of A (three octaves)*

146



*Diminished scale starting on E (three octaves)*

150



*Diminished scale starting on C (two octaves)*

154

