

ABRSM Grade 6 Flute scales & Arpeggios

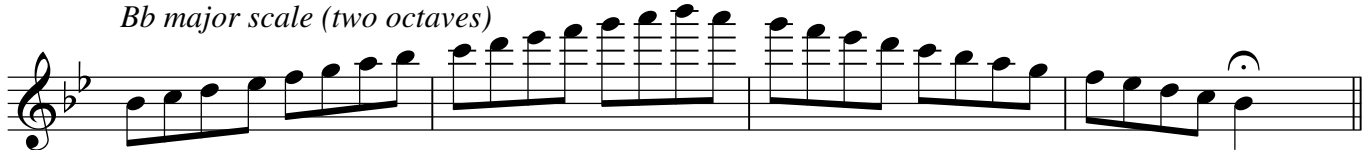
At grade 6, scales should be prepared to a minimum speed of ♩ = 104
and arpeggios to ♩. = 56

Tongued and legato (slurred) articulations are required.

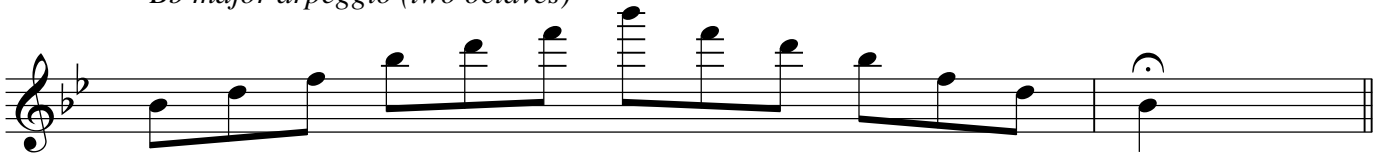
All scales & arpeggios should be known from memory.

At grade 6 BOTH harmonic and melodic minors should be prepared.

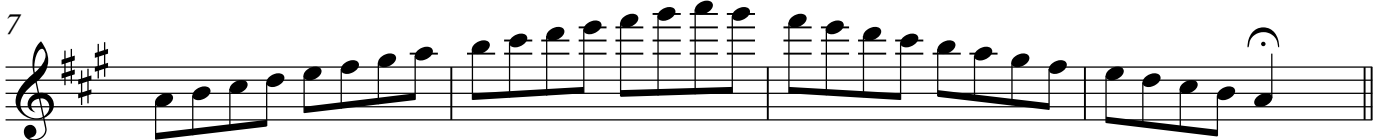
Bb major scale (two octaves)



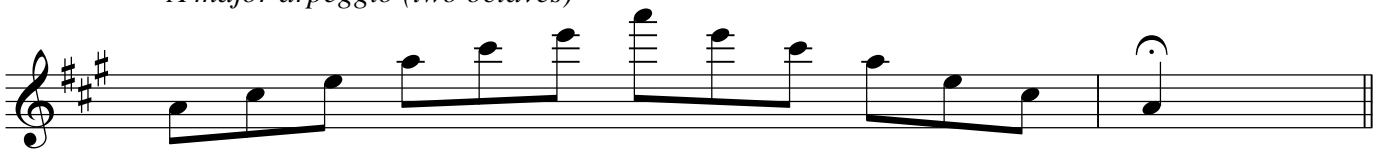
Bb major arpeggio (two octaves)



A major scale (two octaves)



A major arpeggio (two octaves)

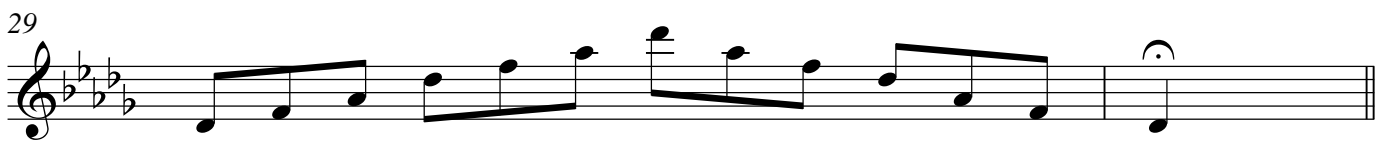


13 *F# major scale (two octaves)*



F# major arpeggio (two octaves)



19 *C major scale (two octaves)*23 *C major arpeggio (two octaves)**Db major scale (two octaves)**Db major arpeggio (two octaves)*31 *B major scale (two octaves)**B major arpeggio (two octaves)*37 *Ab major scale (two octaves)**Ab major arpeggio (two octaves)*

B minor harmonic scale (two octaves)*B minor melodic scale (two octaves)**B minor arpeggio (two octaves)**C# minor harmonic scale (two octaves)**C# minor melodic scale (two octaves)**C# minor arpeggio (two octaves)**E minor harmonic scale (two octaves)**E minor melodic scale (two octaves)**E minor arpeggio (two octaves)*

4

Eb minor harmonic scale (two octaves)

73

Musical notation for the Eb minor harmonic scale (two octaves) in treble clef. The scale starts on Eb and ends on Eb. It consists of an ascending line with a raised 7th degree and a descending line with a lowered 7th degree. The notes are: Eb, F, G, Ab, Bb, C, D, Eb, Eb, D, C, Bb, Ab, G, F, Eb.

Eb minor melodic scale (two octaves)

77

Musical notation for the Eb minor melodic scale (two octaves) in treble clef. The scale starts on Eb and ends on Eb. It consists of an ascending line and a descending line. The notes are: Eb, F, G, Ab, Bb, C, D, Eb, Eb, D, C, Bb, Ab, G, F, Eb.

81

Eb minor arpeggio (two octaves)

Musical notation for the Eb minor arpeggio (two octaves) in treble clef. The notes are: Eb, G, Bb, Eb, G, Bb, Eb, G, Bb, Eb, G, Bb, Eb, G, Bb, Eb.

G# minor harmonic scale (two octaves)

83

Musical notation for the G# minor harmonic scale (two octaves) in treble clef. The scale starts on G# and ends on G#. It consists of an ascending line with a raised 7th degree and a descending line with a lowered 7th degree. The notes are: G#, A#, B, C#, D, E, F#, G#, G#, F#, E, D, C#, B, A#, G#.

G# minor melodic scale (two octaves)

87

Musical notation for the G# minor melodic scale (two octaves) in treble clef. The scale starts on G# and ends on G#. It consists of an ascending line and a descending line. The notes are: G#, A#, B, C#, D, E, F#, G#, G#, F#, E, D, C#, B, A#, G#.

91

G# minor arpeggio (two octaves)

Musical notation for the G# minor arpeggio (two octaves) in treble clef. The notes are: G#, B, D, G#, B, D, G#, B, D, G#, B, D, G#, B, D, G#.

Bb minor harmonic scale (two octaves)

93

Musical notation for the Bb minor harmonic scale (two octaves) in treble clef. The scale starts on Bb and ends on Bb. It consists of an ascending line with a raised 7th degree and a descending line with a lowered 7th degree. The notes are: Bb, C, D, Eb, F, G, Ab, Bb, Bb, Ab, G, F, Eb, D, C, Bb.

Bb minor melodic scale (two octaves)

97

Musical notation for the Bb minor melodic scale (two octaves) in treble clef. The scale starts on Bb and ends on Bb. It consists of an ascending line and a descending line. The notes are: Bb, C, D, Eb, F, G, Ab, Bb, Bb, Ab, G, F, Eb, D, C, Bb.

101

Bb minor arpeggio (two octaves)

Musical notation for the Bb minor arpeggio (two octaves) in treble clef. The notes are: Bb, D, F, Bb, D, F, Bb, D, F, Bb, D, F, Bb, D, F, Bb.

103 *Chromatic scale starting on D (two octaves)*110 *Chromatic scale starting on C (two octaves)*117 *Chromatic scale starting on C# (two octaves)*124 *Chromatic scale starting on A (two octaves)**Dominant seventh in the key of Bb (two octaves)**Dominant seventh in the key of E (two octaves)*

Dominant seventh in the key of D (two octaves)

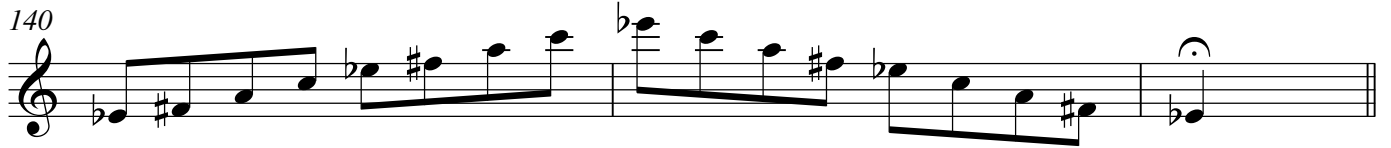
137



Musical notation for a dominant seventh chord in the key of D, spanning two octaves. The notation is on a single treble clef staff. It begins with a treble clef and a key signature of two sharps (F# and C#). The melody starts on D4, moves stepwise up to D5, then descends stepwise to D4, ending with a half note on D4.

Diminished seventh starting on Eb (two octaves)

140



Musical notation for a diminished seventh chord starting on Eb, spanning two octaves. The notation is on a single treble clef staff. It begins with a treble clef and a key signature of one flat (Bb). The melody starts on Eb4, moves stepwise up to Eb5, then descends stepwise to Eb4, ending with a half note on Eb4.

Diminished seventh starting on F (two octaves)

143



Musical notation for a diminished seventh chord starting on F, spanning two octaves. The notation is on a single treble clef staff. It begins with a treble clef and a key signature of one sharp (F#). The melody starts on F4, moves stepwise up to F5, then descends stepwise to F4, ending with a half note on F4.