

ABRSM Grade 6 Saxophone scales & Arpeggios

At grade 6, scales should be prepared to a minimum speed of ♩ = 104
and arpeggios to ♩. = 56

Tongued and slurred articulations are required.

All scales & arpeggios should be known from memory.

At grade 6 BOTH harmonic AND melodic minors should be known.

F# major scale (a twelfth)



F# major arpeggio (a twelfth)



6 *B major scale (two octaves)*



B major arpeggio (two octaves)



12 *Bb major scale (two octaves)*



16 *Bb major arpeggio (two octaves)*



18 *Db major scale (two octaves)*



Db major arpeggio (two octaves)

22

E major scale (two octaves)

24

E major arpeggio (two octaves)

28

F major scale (two octaves)

30

F major arpeggio (two octaves)

34

Ab major scale (a twelfth)

36

Ab major arpeggio (a twelfth)

39

Bb minor harmonic scale (two octaves)

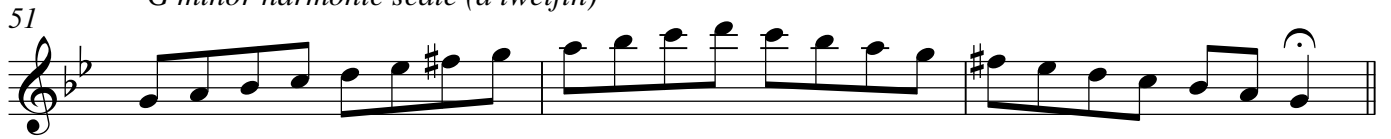
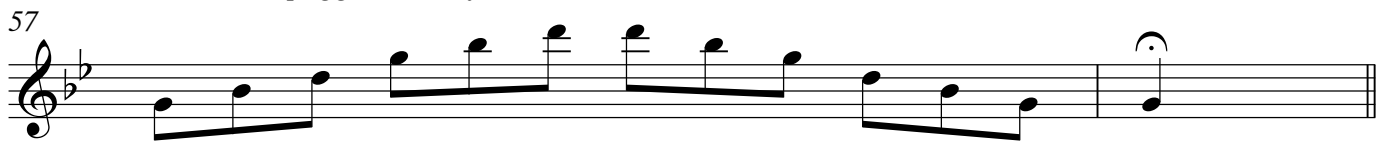
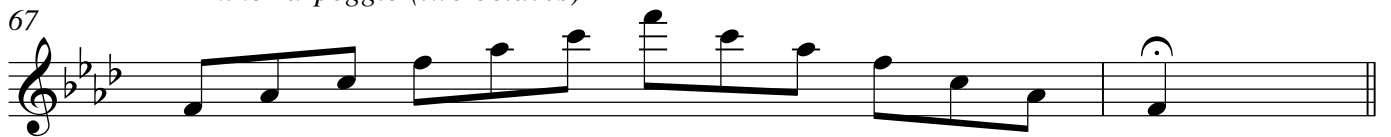
41

Bb minor melodic scale (two octaves)

45

Bb minor arpeggio (two octaves)

49

G minor harmonic scale (a twelfth)*G minor melodic scale (a twelfth)**G minor arpeggio (a twelfth)**F minor harmonic scale (two octaves)**F minor melodic scale (two octaves)**F minor arpeggio (two octaves)**G# minor harmonic scale (a twelfth)**G# minor melodic scale (a twelfth)**G# minor arpeggio (a twelfth)*

77 *B minor harmonic scale (two octaves)*81 *B minor melodic scale (two octaves)*85 *B minor arpeggio (two octaves)*87 *C# minor harmonic scale (two octaves)*91 *C# minor melodic scale (two octaves)*95 *C# minor arpeggio (two octaves)*97 *Chromatic scale starting on C (two octaves)*104 *Chromatic scale starting on Eb (two octaves)*

111 Chromatic scale starting on Bb (two octaves)

Musical notation for a chromatic scale starting on Bb (two octaves) in treble clef. The scale consists of 24 notes: Bb, B, C, C#, D, Eb, E, F, F#, G, Ab, A, Bb, B, C, C#, D, Eb, E, F, F#, G, Ab, A, Bb. The notes are written in eighth notes with stems pointing up and down to indicate the chromatic movement.

Musical notation for a chromatic scale starting on Bb (two octaves) in treble clef. The scale consists of 24 notes: Bb, B, C, C#, D, Eb, E, F, F#, G, Ab, A, Bb, B, C, C#, D, Eb, E, F, F#, G, Ab, A, Bb. The notes are written in eighth notes with stems pointing up and down to indicate the chromatic movement.

118 Chromatic scale starting on E (two octaves)

Musical notation for a chromatic scale starting on E (two octaves) in treble clef. The scale consists of 24 notes: E, F, F#, G, Ab, A, Bb, B, C, C#, D, Eb, E, F, F#, G, Ab, A, Bb, B, C, C#, D, Eb, E. The notes are written in eighth notes with stems pointing up and down to indicate the chromatic movement.

Musical notation for a chromatic scale starting on E (two octaves) in treble clef. The scale consists of 24 notes: E, F, F#, G, Ab, A, Bb, B, C, C#, D, Eb, E, F, F#, G, Ab, A, Bb, B, C, C#, D, Eb, E. The notes are written in eighth notes with stems pointing up and down to indicate the chromatic movement.

125 Dominant seventh in the key of E (two octaves)

Musical notation for a dominant seventh scale in the key of E (two octaves) in treble clef. The scale consists of 14 notes: E, F#, G#, A, B, C, D, E. The notes are written in eighth notes with stems pointing up and down to indicate the scale movement.

128 Dominant seventh in the key of F (two octaves)

Musical notation for a dominant seventh scale in the key of F (two octaves) in treble clef. The scale consists of 14 notes: F, G, Ab, Bb, C, D, Eb, F. The notes are written in eighth notes with stems pointing up and down to indicate the scale movement.

131 Dominant seventh in the key of A (two octaves)

Musical notation for a dominant seventh scale in the key of A (two octaves) in treble clef. The scale consists of 14 notes: A, B, C, D, E, F#, G#, A. The notes are written in eighth notes with stems pointing up and down to indicate the scale movement.

134 Diminished seventh starting on B (two octaves)

Musical notation for a diminished seventh scale starting on B (two octaves) in treble clef. The scale consists of 14 notes: B, C, D, Eb, F, G, Ab, B. The notes are written in eighth notes with stems pointing up and down to indicate the scale movement.

137 Diminished seventh starting on Bb (two octaves)

Musical notation for a diminished seventh scale starting on Bb (two octaves) in treble clef. The scale consists of 14 notes: Bb, C, D, Eb, F, G, Ab, Bb. The notes are written in eighth notes with stems pointing up and down to indicate the scale movement.