

# ABRSM Grade 7 Clarinet scales & Arpeggios.

At grade 7, scales should be prepared to a minimum speed of ♩ = 116  
and arpeggios to ♩. = **66**

Legato tongued, legato, and staccato articulations are required.  
All scales and arpeggios should be know by memory.  
BOTH harmonic AND melodic minors should be prepared at grade 7.

*Bb Major scale (two octaves)*



*Bb Major arpeggio (two octaves)*



7 *Ab Major scale (two octaves)*



*Ab major arpeggio (two octaves)*



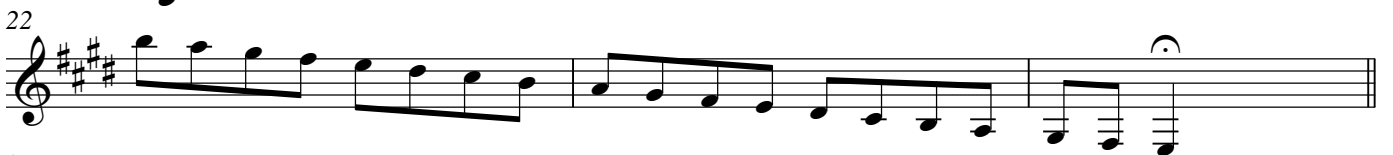
13 *B Major scale (two octaves)*



17 *B major arpeggio (two octaves)*



19 *E major scale (three octaves)*



25 *E major arpeggio (three octaves)*



*D major scale (two octaves)*



*D major arpeggio (two octaves)*



*Db major scale (two octaves)*



37 *Db major arpeggio (two octaves)*



39 *Eb major scale (two octaves)*



43 *Eb major arpeggio (two octaves)*



45 *C major scale (two octaves)*



49 *C major arpeggio (two octaves)*



51 *F major scale (three octaves)*



54



57 *F major arpeggio (three octaves)*



59 *G major scale (two octaves)*



63 *G major arpeggio (two octaves)*

65 *A major scale (two octaves)*

69 *A major arpeggio (two octaves)*

71 *F# major scale (two octaves)*

75 *F# major arpeggio (two octaves)*

77 *G minor harmonic scale (two octaves)*

81 *G minor melodic scale (two octaves)*

85 *G minor arpeggio (two octaves)*

87 *C minor harmonic scale (two octaves)*

91 *C minor melodic scale (two octaves)*

95 *C minor arpeggio (two octaves)*

97 *D minor harmonic scale (two octaves)*

101 *D minor melodic scale (two octaves)*

The image displays ten musical staves, each containing a specific exercise. Each staff begins with a measure number and a descriptive title. The exercises are: 63 G major arpeggio (two octaves), 65 A major scale (two octaves), 69 A major arpeggio (two octaves), 71 F# major scale (two octaves), 75 F# major arpeggio (two octaves), 77 G minor harmonic scale (two octaves), 81 G minor melodic scale (two octaves), 85 G minor arpeggio (two octaves), 87 C minor harmonic scale (two octaves), 91 C minor melodic scale (two octaves), 95 C minor arpeggio (two octaves), 97 D minor harmonic scale (two octaves), and 101 D minor melodic scale (two octaves). Each exercise is written in a single treble clef staff with a key signature of one or two sharps or flats, and a common time signature. The notation includes various note values (quarter, eighth, and sixteenth notes) and rests, with some exercises featuring slurs and ties to indicate phrasing and articulation. The exercises are arranged in a vertical sequence, with each staff starting at a measure number that is a multiple of 4.



140



143 *E minor arpeggio (three octaves)*



145 *F# minor harmonic scale (two octaves)*



149 *F# minor melodic scale (two octaves)*



153 *F# minor arpeggio (two octaves)*



*Bb minor harmonic scale (two octaves)*



159 *Bb minor melodic scale (two octaves)*



*Bb minor arpeggio (two octaves)*



*A minor harmonic scale (two octaves)*



*A minor melodic scale (two octaves)*



*A minor arpeggio (two octaves)*



175 *G# minor harmonic scale (two octaves)*



179 *G# minor melodic scale (two octaves)*183 *G# minor arpeggio (two octaves)*185 *B minor harmonic scale (two octaves)*189 *B minor melodic scale (two octaves)*193 *B minor arpeggio (two octaves)*195 *C# minor harmonic scale (two octaves)*199 *C# minor melodic scale (two octaves)*203 *C# minor arpeggio (two octaves)**Chromatic scale starting on middle C (two octaves)*

208

212 *Chromatic scale starting on F (three octaves)*

216



219



263

267 *Chromatic scale starting on G# (two octaves)*

270

274 *Chromatic scale starting on Bb (two octaves)*

277

281 *Chromatic scale starting on B (two octaves)*

284

288 *Chromatic scale starting on A (two octaves)*

291

*Dominant seventh in the KEY of Bb (three octaves)*

295

299 *Dominant seventh in the KEY of Db (two octaves)*

*Dominant seventh in the KEY of A (three octaves)*

302



306 *Dominant seventh in the KEY of Eb (two octaves)*



309 *Dominant seventh in the KEY of G (two octaves)*



312 *Dominant seventh in the KEY of F# (two octaves)*



315 *Diminished scale starting on F (three octaves)*



319 *Diminished scale starting on E (three octaves)*



323 *Diminished scale starting on C (two octaves)*

