

# ABRSM Grade 7 Saxophone scales & Arpeggios

At grade 7, scales should be prepared to a minimum speed of ♩ = 116  
and arpeggios to ♩. = 66

Tongued and slurred articulations are required.  
All scales & arpeggios should be known from memory.  
At grade 7 BOTH harmonic AND melodic minors should be known.

*F# major scale (a twelfth)*



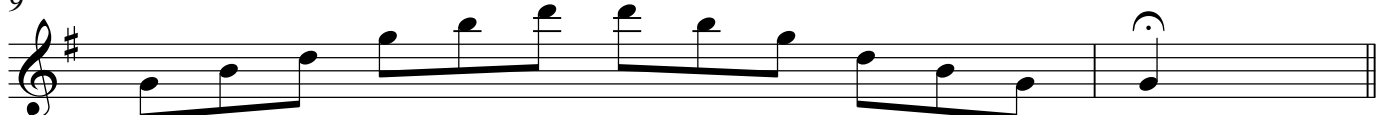
*F# major arpeggio (a twelfth)*



6 *G major scale (a twelfth)*



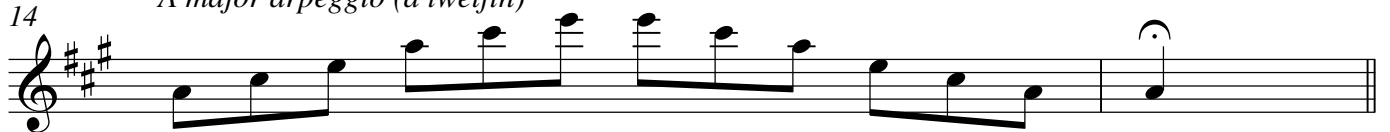
9 *G major arpeggio (a twelfth)*



11 *A major scale (a twelfth)*



14 *A major arpeggio (a twelfth)*



16 *C major scale (two octaves)*



20 *C major arpeggio (two octaves)*



22 *D major scale (two octaves)*26 *D major arpeggio (two octaves)*28 *Eb major scale (two octaves)*32 *Eb major arpeggio (two octaves)*34 *B major scale (two octaves)**B major arpeggio (two octaves)*40 *Bb major scale (two octaves)*44 *Bb major arpeggio (two octaves)*46 *Db major scale (two octaves)*50 *Db major arpeggio (two octaves)*

52 *E major scale (two octaves)*

56 *E major arpeggio (two octaves)*

58 *F major scale (two octaves)*

62 *F major arpeggio (two octaves)*

64 *A<sup>b</sup> major scale (a twelfth)*

67 *A<sup>b</sup> major arpeggio (a twelfth)*

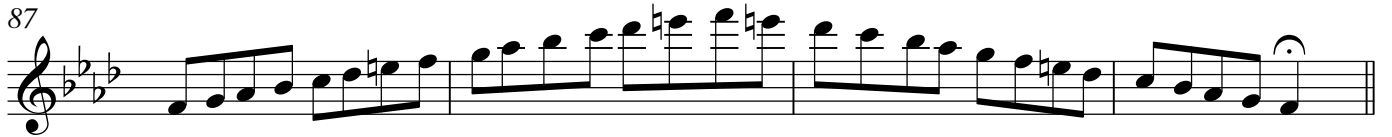
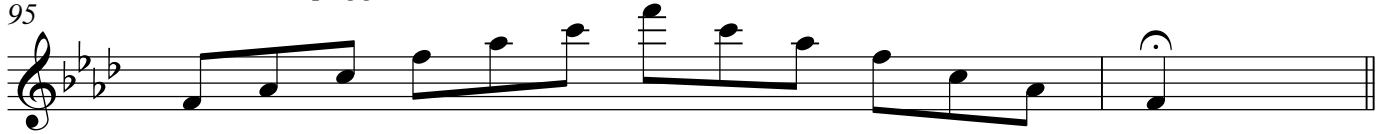
69 *B<sup>b</sup> minor harmonic scale (two octaves)*

73 *B<sup>b</sup> minor melodic scale (two octaves)*

77 *B<sup>b</sup> minor arpeggio (two octaves)*

79 *G minor harmonic scale (a twelfth)*

Detailed description of the page: The page contains ten musical staves, each with a treble clef and a key signature. The first staff (52) is E major scale (two octaves), starting on E4 and ending on E6. The second staff (56) is E major arpeggio (two octaves), starting on E4 and ending on E6. The third staff (58) is F major scale (two octaves), starting on F4 and ending on F6. The fourth staff (62) is F major arpeggio (two octaves), starting on F4 and ending on F6. The fifth staff (64) is A-flat major scale (a twelfth), starting on A-flat4 and ending on A-flat6. The sixth staff (67) is A-flat major arpeggio (a twelfth), starting on A-flat4 and ending on A-flat6. The seventh staff (69) is B-flat minor harmonic scale (two octaves), starting on B-flat4 and ending on B-flat6. The eighth staff (73) is B-flat minor melodic scale (two octaves), starting on B-flat4 and ending on B-flat6. The ninth staff (77) is B-flat minor arpeggio (two octaves), starting on B-flat4 and ending on B-flat6. The tenth staff (79) is G minor harmonic scale (a twelfth), starting on G4 and ending on G6.

82 *G minor melodic scale (a twelfth)*85 *G minor arpeggio (a twelfth)*87 *F minor harmonic scale (two octaves)*91 *F minor melodic scale (two octaves)*95 *F minor arpeggio (two octaves)*97 *G# minor harmonic scale (a twelfth)*100 *G# minor melodic scale (a twelfth)*103 *G# minor arpeggio (a twelfth)*105 *F# minor harmonic scale (a twelfth)*108 *F# minor melodic scale (a twelfth)*

111 *F# minor arpeggio (a twelfth)*113 *A minor harmonic scale (a twelfth)*116 *A minor melodic scale (a twelfth)*119 *A minor arpeggio (a twelfth)*121 *B minor harmonic scale (two octaves)*125 *B minor melodic scale (two octaves)*129 *B minor arpeggio (two octaves)*131 *C# minor harmonic scale (two octaves)*135 *C# minor melodic scale (two octaves)*139 *C# minor arpeggio (two octaves)*

141 *C minor harmonic scale (two octaves)*145 *C minor melodic scale (two octaves)*149 *C minor arpeggio (two octaves)*151 *D minor harmonic scale (two octaves)*155 *D minor melodic scale (two octaves)*159 *D minor arpeggio (two octaves)*161 *D# minor harmonic scale (two octaves) also known as Eb minor harmonic*165 *D# minor harmonic scale (two octaves) also known as Eb minor melodic*169 *D# minor arpeggio (two octaves) also known as Eb minor arpeggio*171 *E minor harmonic scale (two octaves)*175 *E minor harmonic scale (two octaves)*

179 *E minor arpeggio (two octaves)*181 *Chromatic scale starting on C (two octaves)*

184

188 *Chromatic scale starting on Eb (two octaves)*

191

195 *Chromatic scale starting on Bb (two octaves)*

198

202 *Chromatic scale starting on E (two octaves)*

205

209 *Chromatic scale starting on C# (two octaves)*

212



216 *Chromatic scale starting on D (two octaves)*

219

223 *Chromatic scale starting on F (two octaves)*

226

230 *Chromatic scale starting on B (two octaves)*

233

237 *Chromatic scale starting on F# (a twelfth)*

239

242 *Chromatic scale starting on G (a twelfth)*

244





247 *Chromatic scale starting on G# (a twelfth)*

Musical notation for exercise 247, consisting of two staves of music. The first staff shows a chromatic scale starting on G# and ascending to G# two octaves higher. The second staff shows the same chromatic scale descending from G# two octaves higher back to G#.

252 *Chromatic scale starting on A (a twelfth)*

Musical notation for exercise 252, consisting of two staves of music. The first staff shows a chromatic scale starting on A and ascending to A two octaves higher. The second staff shows the same chromatic scale descending from A two octaves higher back to A.

257 *Dominant seventh in the key of E (two octaves)*

Musical notation for exercise 257, showing a dominant seventh chord in the key of E (E-G#-B-D) played across two octaves on a single staff.

260 *Dominant seventh in the key of Eb (two octaves)*

Musical notation for exercise 260, showing a dominant seventh chord in the key of Eb (Eb-Gb-Bb-D) played across two octaves on a single staff.

263 *Dominant seventh in the key of F (two octaves)*

Musical notation for exercise 263, showing a dominant seventh chord in the key of F (F-A-C-Eb) played across two octaves on a single staff.

266 *Dominant seventh in the key of F# (two octaves)*

Musical notation for exercise 266, showing a dominant seventh chord in the key of F# (F#-A#-C#-E) played across two octaves on a single staff.

269 *Dominant seventh in the key of Ab (two octaves)*

Musical notation for exercise 269, showing a dominant seventh chord in the key of Ab (Ab-Cb-Eb-G) played across two octaves on a single staff.

272 *Diminished seventh starting on B (two octaves)*

Musical notation for exercise 272, showing a diminished seventh chord starting on B (B-D#-F#-Ab) played across two octaves on a single staff.

275 *Diminished seventh starting on Bb (two octaves)*

Musical notation for exercise 275, showing a diminished seventh chord starting on Bb (Bb-D-E-G) played across two octaves on a single staff.

278 *Diminished seventh starting on C (two octaves)*

Musical notation for exercise 278, showing a diminished seventh chord starting on C (C-Eb-F-G) played across two octaves on a single staff.