

2018 onwards

## ABRSM Grade 2 Flute Scales & Arpeggios

At grade 2, scales should be prepared to a minimum speed of ♩ = 56  
and arpeggios to ♩ = 84

Tongued, and slurred articulations are required.

All scales & arpeggios should be known from memory.

At grade 2 EITHER harmonic, natural, OR melodic minors can be prepared.

*F major scale (a twelfth)*



*F major arpeggio (a twelfth)*



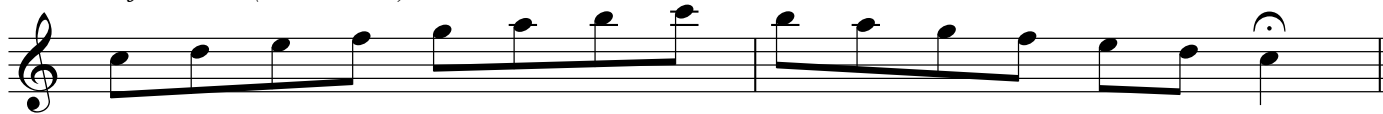
*G major scale (a twelfth)*



*G major arpeggio (a twelfth)*



*C major scale (one octave)*



*C major arpeggio (one octave)*

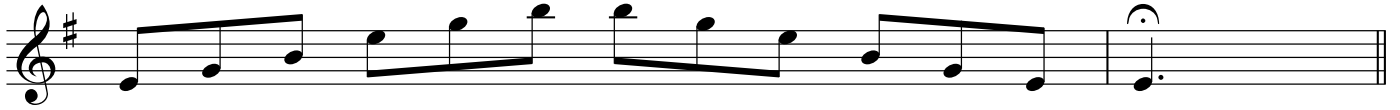


*E minor harmonic scale (a twelfth)*



*E minor (natural) scale (a twelfth)*



*E minor melodic scale (a twelfth)**E minor arpeggio (a twelfth)**A minor harmonic scale (one octave)**A minor (natural) scale (one octave)**A minor melodic scale (one octave)**A minor arpeggio (one octave)*