

# ABRSM Grade 2 Flute Scales & Arpeggios

At grade 2, scales should be prepared to a minimum speed of ♩ = 56  
and arpeggios to ♩ = 80

Tongued, and slurred articulations are required.

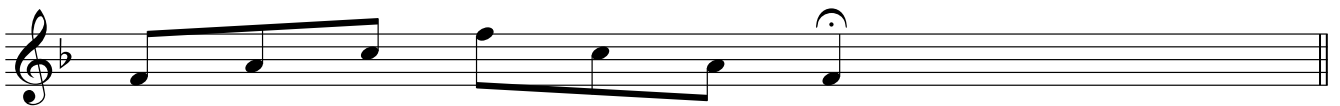
All scales & arpeggios should be known from memory.

At grade 2 EITHER harmonic, natural, OR melodic minors can be prepared.

*F major scale (one octave)*



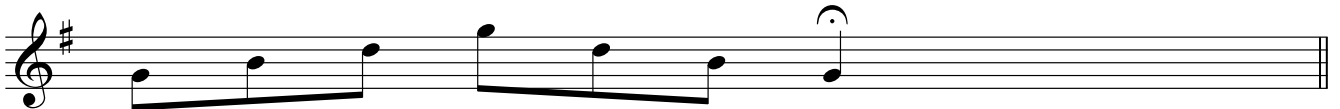
*F major arpeggio (one octave)*



*G major scale (one octave)*



*G major arpeggio (one octave)*



*D major scale (two octaves)*



*D major arpeggio (two octaves)*



*E minor harmonic scale (one octave)**E minor (natural) scale (one octave)**E minor melodic scale (one octave)**E minor arpeggio (one octave)**A minor harmonic scale (one octave)**A minor (natural) scale (one octave)**A minor melodic scale (one octave)**A minor arpeggio (one octave)*