

2018 onwards

# ABRSM Grade 3 Saxophone Scales & Arpeggios

At grade 3, scales should be prepared to a minimum speed of  $\text{♩} = 63$   
and arpeggios to  $\text{♩} = 96$

Tongued, and slurred articulations are required.

All scales & arpeggios should be known from memory.

At grade 3 EITHER harmonic OR melodic minors can be prepared.

*G major scale (a twelfth)*



*G major arpeggio (a twelfth)*



*Bb major scale (one octave)*



*Bb major arpeggio (one octave)*



*C major scale (two octaves)*



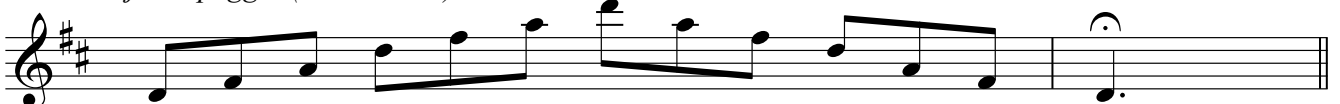
*C major arpeggio (two octaves)*



*D major scale (two octaves)*



*D major arpeggio (two octaves)*



2

*D minor harmonic scale (two octaves)*

Musical notation for the D minor harmonic scale over two octaves. The scale starts on D4, moves up to D5, and then back down to D4. The notes are D, E, F, G, A, B, C, D, E, F, G, A, B, C, D, E, F, G, A, B, C, D, E, F, G, A, B, C, D. The key signature has one flat (Bb).

*D minor melodic scale (two octaves)*

Musical notation for the D minor melodic scale over two octaves. The scale starts on D4, moves up to D5, and then back down to D4. The notes are D, E, F, G, A, B, C, D, E, F, G, A, B, C, D, E, F, G, A, B, C, D, E, F, G, A, B, C, D. The key signature has one flat (Bb). There are accidentals (b) on the descending notes C and B.

*D Minor arpeggio (two octaves)*

Musical notation for the D minor arpeggio over two octaves. The notes are D, F, A, D, F, A, D, F, A, D, F, A, D, F, A, D, F, A, D, F, A, D, F, A, D, F, A, D, F, A, D. The key signature has one flat (Bb).

*G minor harmonic scale (a twelfth)*

Musical notation for the G minor harmonic scale over a twelfth. The scale starts on G3, moves up to G5, and then back down to G3. The notes are G, A, B, C, D, E, F, G, A, B, C, D, E, F, G, A, B, C, D, E, F, G, A, B, C, D, E, F, G. The key signature has two flats (Bb, Eb).

*G minor melodic scale (a twelfth)*

Musical notation for the G minor melodic scale over a twelfth. The scale starts on G3, moves up to G5, and then back down to G3. The notes are G, A, B, C, D, E, F, G, A, B, C, D, E, F, G, A, B, C, D, E, F, G, A, B, C, D, E, F, G. The key signature has two flats (Bb, Eb). There are accidentals (b) on the descending notes F and E.

*G minor arpeggio (a twelfth)*

Musical notation for the G minor arpeggio over a twelfth. The notes are G, Bb, D, G, Bb, D, G, Bb, D, G, Bb, D, G, Bb, D, G, Bb, D, G, Bb, D, G, Bb, D, G, Bb, D, G, Bb, D. The key signature has two flats (Bb, Eb).

*B minor harmonic scale (one octave)*

Musical notation for the B minor harmonic scale over one octave. The scale starts on B3, moves up to B4, and then back down to B3. The notes are B, C, D, E, F, G, A, B, C, D, E, F, G, A, B, C, D, E, F, G, A, B. The key signature has two sharps (F#, C#).

*B minor melodic scale (one octave)*

Musical notation for the B minor melodic scale over one octave. The scale starts on B3, moves up to B4, and then back down to B3. The notes are B, C, D, E, F, G, A, B, C, D, E, F, G, A, B, C, D, E, F, G, A, B. The key signature has two sharps (F#, C#). There are accidentals (b) on the descending notes A and G.

*B minor arpeggio (one octave)*

Musical notation for the B minor arpeggio over one octave. The notes are B, D, F, B, D, F, B, D, F, B, D, F, B, D, F, B, D, F, B, D, F, B, D, F, B, D, F, B, D, F, B. The key signature has two sharps (F#, C#).

*Chromatic scale starting on G (one octave)*

Musical notation for the chromatic scale starting on G over one octave. The notes are G, G#, A, Ab, A, Bb, B, B#, C, C#, C, D, Db, D, Eb, E, E#, F, F#, F, G, G#. The key signature has two sharps (F#, C#).