

2018 onwards

ABRSM Grade 4 Flute Scales & Arpeggios

At grade 4, scales should be prepared to a minimum speed of ♩ = 72
and arpeggios to ♩ = 108 unless otherwise specified.

Tongued, and slurred (legato) articulations are required.

All scales & arpeggios should be known from memory.

At grade 4 EITHER harmonic OR melodic minors can be prepared.

Bb major scale (a twelfth)



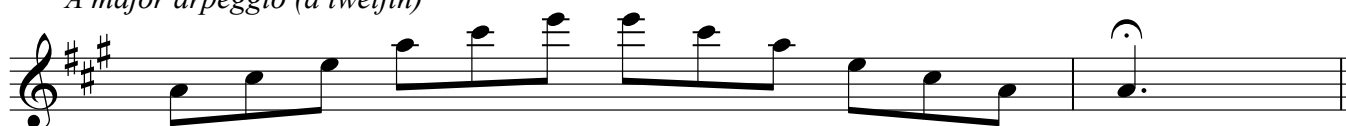
Bb major arpeggio (a twelfth)



A major scale (a twelfth)



A major arpeggio (a twelfth)



G major scale (two octaves)



G major arpeggio (two octaves)

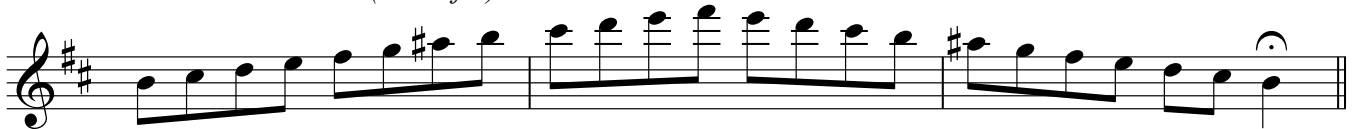
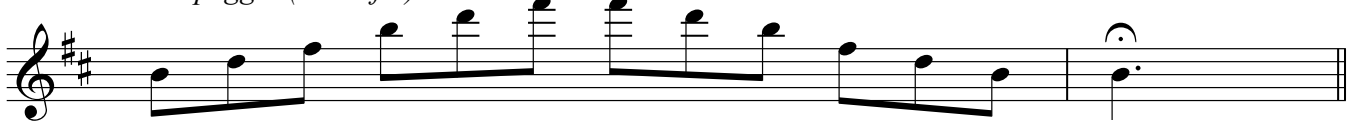
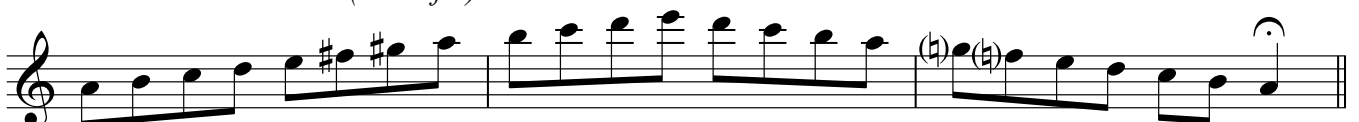
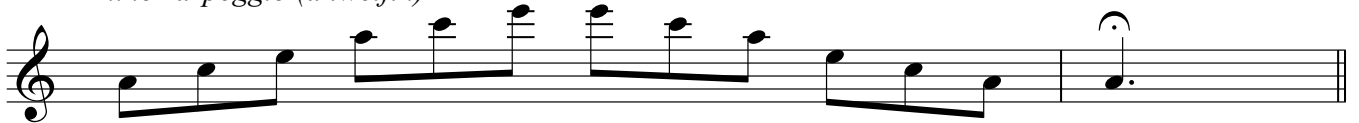


C major scale (two octaves)



C major arpeggio (two octaves)



Eb major scale (two octaves)*Eb major arpeggio (two octaves)**B minor harmonic scale (a twelfth)**B minor melodic scale (a twelfth)**B minor arpeggio (a twelfth)**A minor harmonic scale (a twelfth)**A minor melodic scale (a twelfth)**A minor arpeggio (a twelfth)**G minor harmonic scale (two octaves)**G minor melodic scale (two octaves)**G minor arpeggio (two octaves)*

C minor harmonic scale (two octaves)



C minor melodic scale (two octaves)



C minor arpeggio (two octaves)



Chromatic scale starting on D (two octaves)



Dominant seventh in the key of G (two octaves) ♩ = 54

