

ABRSM Grade 5 Saxophone Scales & Arpeggios

At grade 5, scales should be prepared to a minimum speed of ♩ = 80
and arpeggios to ♩ = 112

Tongued, and slurred articulations are required.

All scales & arpeggios should be known from memory.

At grade 5 EITHER harmonic OR melodic minors can be prepared.

G major scale (a twelfth)



G major arpeggio (a twelfth)



Bb major scale (two octaves)



Bb major arpeggio (two octaves)



D major scale (two octaves)



D major arpeggio (two octaves)



Eb major scale (two octaves)

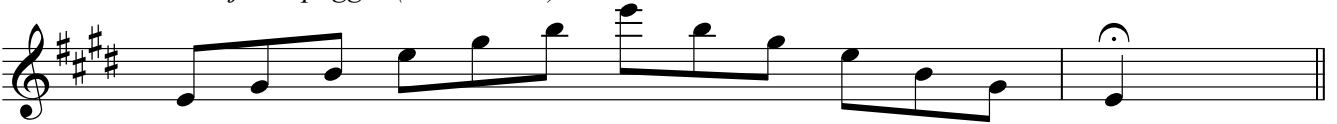
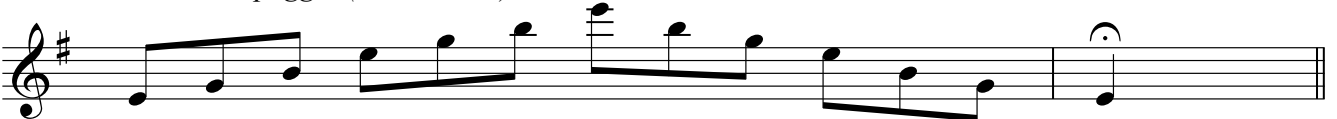
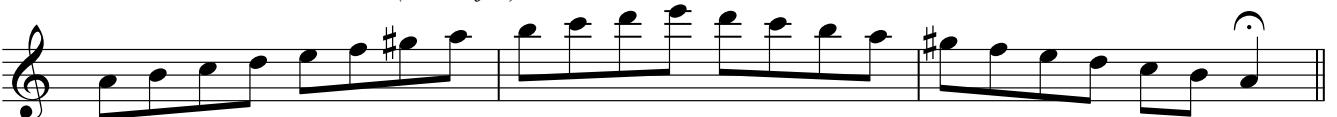


Eb major arpeggio (two octaves)



E major scale (two octaves)



E major arpeggio (two octaves)*Ab major scale (a twelfth)**Ab major arpeggio (a twelfth)**A major scale (a twelfth)**A major arpeggio (a twelfth)**E minor harmonic scale (two octaves)**E minor melodic scale (two octaves)**E minor arpeggio (two octaves)**A minor harmonic scale (a twelfth)**A minor melodic scale (a twelfth)**A minor arpeggio (a twelfth)*

F# minor harmonic scale (a twelfth)

3

This musical staff shows the F# minor harmonic scale over a twelfth interval. The key signature has three sharps (F#, C#, G#). The scale is written in a treble clef and consists of 12 notes: F#4, G4, A4, B4, C#5, B4, A4, G4, F#4, E4, D4, C#4. The final note, C#4, is marked with a fermata and a '3' above it, indicating a triplet.

F# minor melodic scale (a twelfth)

This musical staff shows the F# minor melodic scale over a twelfth interval. The key signature has three sharps (F#, C#, G#). The scale is written in a treble clef and consists of 12 notes: F#4, G4, A4, B4, C#5, B4, A4, G4, F#4, E4, D4, C#4. The final note, C#4, is marked with a fermata.

F# minor arpeggio (a twelfth)

This musical staff shows the F# minor arpeggio over a twelfth interval. The key signature has three sharps (F#, C#, G#). The arpeggio is written in a treble clef and consists of 12 notes: F#4, G4, A4, B4, C#5, B4, A4, G4, F#4, E4, D4, C#4. The final note, C#4, is marked with a fermata.

F minor harmonic scale (a twelfth)

This musical staff shows the F minor harmonic scale over a twelfth interval. The key signature has two flats (Bb, Eb). The scale is written in a treble clef and consists of 12 notes: F4, G4, Ab4, Bb4, C5, Bb4, Ab4, G4, F4, E4, D4, C4. The final note, C4, is marked with a fermata.

F minor melodic scale (a twelfth)

This musical staff shows the F minor melodic scale over a twelfth interval. The key signature has two flats (Bb, Eb). The scale is written in a treble clef and consists of 12 notes: F4, G4, Ab4, Bb4, C5, Bb4, Ab4, G4, F4, E4, D4, C4. The final note, C4, is marked with a fermata.

F minor arpeggio (a twelfth)

This musical staff shows the F minor arpeggio over a twelfth interval. The key signature has two flats (Bb, Eb). The arpeggio is written in a treble clef and consists of 12 notes: F4, G4, Ab4, Bb4, C5, Bb4, Ab4, G4, F4, E4, D4, C4. The final note, C4, is marked with a fermata.

B minor harmonic scale (two octaves)

This musical staff shows the B minor harmonic scale over two octaves. The key signature has two sharps (F#, C#). The scale is written in a treble clef and consists of 24 notes: B4, C5, D5, E5, F#5, E5, D5, C5, B4, A4, G4, F#4, E4, D4, C4, B3, A3, G3, F#3, E3, D3, C3. The final note, C3, is marked with a fermata.

B minor melodic scale (two octaves)

This musical staff shows the B minor melodic scale over two octaves. The key signature has two sharps (F#, C#). The scale is written in a treble clef and consists of 24 notes: B4, C5, D5, E5, F#5, E5, D5, C5, B4, A4, G4, F#4, E4, D4, C4, B3, A3, G3, F#3, E3, D3, C3. The final note, C3, is marked with a fermata.

B minor arpeggio (two octaves)

This musical staff shows the B minor arpeggio over two octaves. The key signature has two sharps (F#, C#). The arpeggio is written in a treble clef and consists of 24 notes: B4, C5, D5, E5, F#5, E5, D5, C5, B4, A4, G4, F#4, E4, D4, C4, B3, A3, G3, F#3, E3, D3, C3. The final note, C3, is marked with a fermata.

C# minor harmonic scale (two octaves)*C# minor melodic scale (two octaves)**C# minor arpeggio (two octaves)**Chromatic scale starting on D (two octaves)**Chromatic scale starting on Eb (two octaves)**Dominant seventh in the key of Eb (two octaves)**Dominant seventh in the key of F (two octaves)**Dominant seventh in the key of G (two octaves)**Diminished seventh starting on D (two octaves)*