

2018 onwards

## ABRSM Grade 6 Clarinet Scales & Arpeggios.

At grade 6, scales should be prepared to a minimum speed of ♩ = 96  
and arpeggios to ♩ = 48 unless specified otherwise.

Tongued, and slurred (legato) articulations are required.  
At grade 6 BOTH harmonic AND melodic minor scales should be prepared.

*Bb Major scale in thirds (one octave) ♩ = 88*



*Ab Major scale (two octaves)*



*Ab major arpeggio (two octaves)*



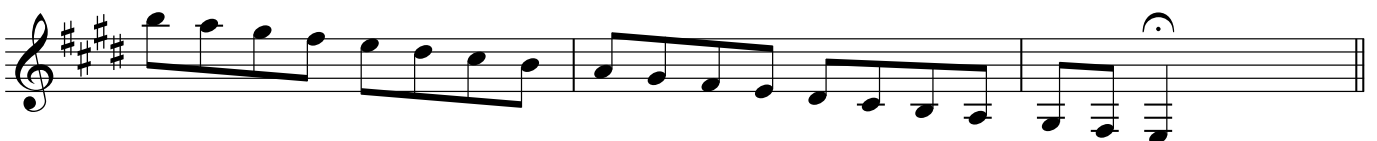
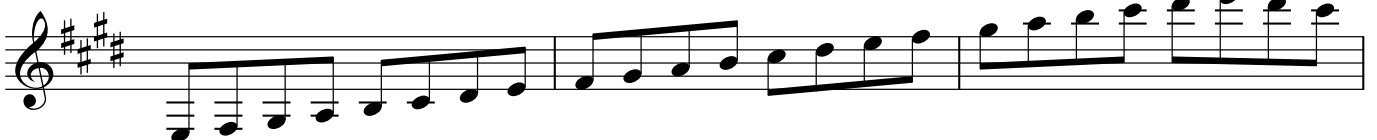
*B Major scale (two octaves)*



*B major arpeggio (two octaves)*



*E major scale (three octaves)*



*E major arpeggio (three octaves)*



*D major scale (two octaves)*

Musical notation for the D major scale (two octaves) in treble clef. The key signature has two sharps (F# and C#). The scale is written in quarter notes, ascending and then descending, ending with a whole note D.

*D major arpeggio (two octaves)*

Musical notation for the D major arpeggio (two octaves) in treble clef. The key signature has two sharps. The notes are D, F#, A, C#, G#, B, A, F#, E, C, B, A, G, F, E, D, written in quarter notes.

*C major scale (two octaves)*

Musical notation for the C major scale (two octaves) in treble clef. The key signature has no sharps or flats. The scale is written in quarter notes, ascending and then descending, ending with a whole note C.

*C major arpeggio (two octaves)*

Musical notation for the C major arpeggio (two octaves) in treble clef. The key signature has no sharps or flats. The notes are C, E, G, B, A, G, F, E, D, C, B, A, G, F, E, D, C, written in quarter notes.

*C minor harmonic scale (two octaves)*

Musical notation for the C minor harmonic scale (two octaves) in treble clef. The key signature has two flats (Bb and Eb). The scale is written in quarter notes, ascending and then descending, ending with a whole note C. The notes are C, D, Eb, F, G, Ab, Bb, A, G, F, Eb, D, C.

*C minor melodic scale (two octaves)*

Musical notation for the C minor melodic scale (two octaves) in treble clef. The key signature has two flats. The scale is written in quarter notes, ascending and then descending, ending with a whole note C. The notes are C, D, Eb, F, G, Ab, Bb, Ab, G, F, Eb, D, C.

*C minor arpeggio (two octaves)*

Musical notation for the C minor arpeggio (two octaves) in treble clef. The key signature has two flats. The notes are C, Eb, G, Bb, Ab, G, F, Eb, D, C, Bb, Ab, G, F, Eb, D, C, written in quarter notes.

*G# minor harmonic scale (two octaves)*

Musical notation for the G# minor harmonic scale (two octaves) in treble clef. The key signature has four sharps (F#, C#, G#, D#). The scale is written in quarter notes, ascending and then descending, ending with a whole note G#. The notes are G#, A, B, C#, D, E, F#, E, D, C#, B, A, G#, F#, E, D, C#, written in quarter notes. Some notes have an 'x' above them.

*G# minor melodic scale (two octaves)*

Musical notation for the G# minor melodic scale (two octaves) in treble clef. The key signature has four sharps. The scale is written in quarter notes, ascending and then descending, ending with a whole note G#. The notes are G#, A, B, C#, D, E, F#, E, D, C#, B, A, G#, F#, E, D, C#, written in quarter notes. Some notes have an 'x' above them.

*G# minor arpeggio (two octaves)*

Musical notation for the G# minor arpeggio (two octaves) in treble clef. The key signature has four sharps. The notes are G#, B, D, F#, E, D, C#, B, A, G#, F#, E, D, C#, B, A, G#, written in quarter notes.

*E minor harmonic scale (three octaves)*

Two staves of musical notation for the E minor harmonic scale over three octaves. The first staff shows the ascending scale with a triplet of eighth notes on the final E. The second staff shows the descending scale with a fermata on the final E.

*E minor melodic scale (three octaves)*

Two staves of musical notation for the E minor melodic scale over three octaves. The first staff shows the ascending scale. The second staff shows the descending scale with flats for the 3rd, 6th, and 7th degrees.

*E minor arpeggio (three octaves)*

Two staves of musical notation for the E minor arpeggio over three octaves. The first staff shows the ascending arpeggio. The second staff shows the descending arpeggio with a fermata on the final E.

*B minor harmonic scale (two octaves)*

Two staves of musical notation for the B minor harmonic scale over two octaves. The first staff shows the ascending scale with a triplet of eighth notes on the final B. The second staff shows the descending scale with a fermata on the final B.

*B minor melodic scale (two octaves)*

Two staves of musical notation for the B minor melodic scale over two octaves. The first staff shows the ascending scale. The second staff shows the descending scale with flats for the 3rd, 6th, and 7th degrees.

*B minor arpeggio (two octaves)*

Two staves of musical notation for the B minor arpeggio over two octaves. The first staff shows the ascending arpeggio. The second staff shows the descending arpeggio with a fermata on the final B.

*D minor harmonic scale (two octaves)*

Two staves of musical notation for the D minor harmonic scale over two octaves. The first staff shows the ascending scale with a triplet of eighth notes on the final D. The second staff shows the descending scale with a fermata on the final D.

*D minor melodic scale (two octaves)*

Two staves of musical notation for the D minor melodic scale over two octaves. The first staff shows the ascending scale. The second staff shows the descending scale with flats for the 3rd, 6th, and 7th degrees.

*D minor arpeggio (two octaves)*

Two staves of musical notation for the D minor arpeggio over two octaves. The first staff shows the ascending arpeggio. The second staff shows the descending arpeggio with a fermata on the final D.

4 *Chromatic scale starting on D (two octaves)*

*Chromatic scale starting on G# (two octaves)*

*Chromatic scale starting on E (three octaves)*

*Dominant seventh in the key of G (two octaves) ♩ = 72*

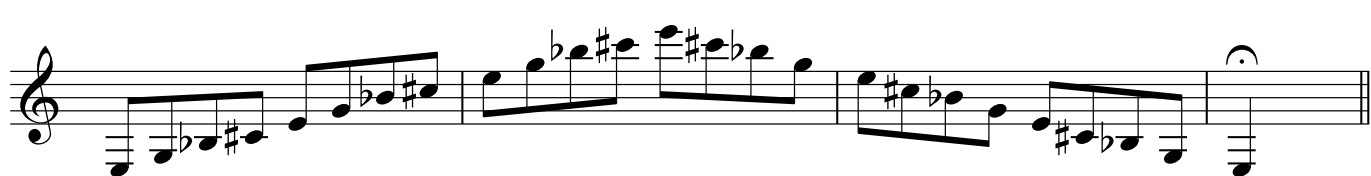
*Dominant seventh in the key of C# (two octaves) ♩ = 72*

*Dominant seventh in the key of Db (enharmonic version of above, two octaves) ♩ = 72*

*Dominant seventh in the key of A (three octaves)* ♩ = 72



*Diminished seventh starting on E (three octaves)* ♩ = 72



*Diminished seventh starting on D (two octaves)* ♩ = 72



*Diminished seventh starting on G# (two octaves)* ♩ = 72

