

2018 onwards

ABRSM Grade 7 Clarinet Scales & Arpeggios.

At grade 7, scales should be prepared to a minimum speed of ♩ = 112
and arpeggios to ♩. = 54 unless specified otherwise.

Legato tongued, legato, and staccato articulations are required.

All scales and arpeggios should be know by memory.

BOTH harmonic AND melodic minors should be prepared at grade 7.

Bb Major scale (two octaves)



Bb Major arpeggio (two octaves)



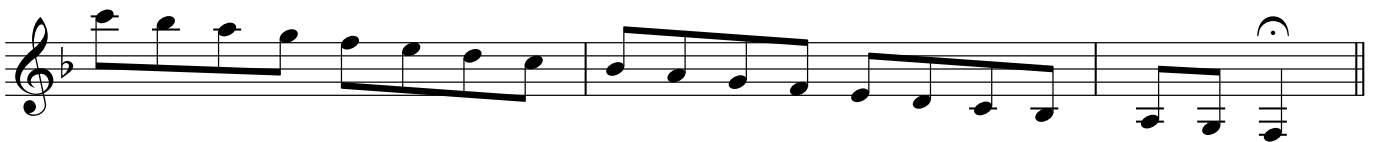
Db major scale (two octaves)



Db major arpeggio (two octaves)



F major scale (three octaves)



F major arpeggio (three octaves)



A major scale (two octaves)



A major arpeggio (two octaves)*F# major scale (two octaves)**F# major arpeggio (two octaves)**G major scale in thirds (two octaves) ♩ = 100**C major scale (extended)**C# minor harmonic scale (two octaves)*

F minor harmonic scale (three octaves)

Two staves of musical notation for the F minor harmonic scale over three octaves. The first staff shows the ascending scale with a natural sign over the final note. The second staff shows the descending scale with a fermata over the final note.

F minor melodic scale (three octaves)

Two staves of musical notation for the F minor melodic scale over three octaves. The first staff shows the ascending scale with a natural sign over the final note. The second staff shows the descending scale with a fermata over the final note.

F minor arpeggio (three octaves)

Two staves of musical notation for the F minor arpeggio over three octaves. The first staff shows the ascending arpeggio with a natural sign over the final note. The second staff shows the descending arpeggio with a fermata over the final note.

F# minor harmonic scale (two octaves)

Two staves of musical notation for the F# minor harmonic scale over two octaves. The first staff shows the ascending scale with a natural sign over the final note. The second staff shows the descending scale with a fermata over the final note.

F# minor melodic scale (two octaves)

Two staves of musical notation for the F# minor melodic scale over two octaves. The first staff shows the ascending scale with a natural sign over the final note. The second staff shows the descending scale with a fermata over the final note.

F# minor arpeggio (two octaves)

Two staves of musical notation for the F# minor arpeggio over two octaves. The first staff shows the ascending arpeggio with a natural sign over the final note. The second staff shows the descending arpeggio with a fermata over the final note.

Bb minor harmonic scale (two octaves)

Two staves of musical notation for the Bb minor harmonic scale over two octaves. The first staff shows the ascending scale with a natural sign over the final note. The second staff shows the descending scale with a fermata over the final note.

Bb minor melodic scale (two octaves)

Two staves of musical notation for the Bb minor melodic scale over two octaves. The first staff shows the ascending scale with a natural sign over the final note. The second staff shows the descending scale with a fermata over the final note.

Bb minor arpeggio (two octaves)

Two staves of musical notation for the Bb minor arpeggio over two octaves. The first staff shows the ascending arpeggio with a natural sign over the final note. The second staff shows the descending arpeggio with a fermata over the final note.

4 *A minor harmonic scale (two octaves)*



A minor melodic scale (two octaves)



A minor arpeggio (two octaves)



Chromatic scale starting on C# (Db) (two octaves)



Chromatic scale starting on Bb (two octaves)

5

Dominant seventh in the key of Bb (three octaves) ♩ = 80

Dominant seventh in the key of B (two octaves) ♩ = 80

Dominant seventh in the key of Eb (two octaves) ♩ = 80

Dominant seventh in the key of F# (two octaves) ♩ = 80

Diminished seventh starting on F# (two octaves) ♩ = 80

Diminished seventh starting on F (three octaves) ♩ = 80

Diminished seventh starting on C# (two octaves) ♩ = 80

Diminished seventh starting on Bb (two octaves) ♩ = 80