

2018 onwards

ABRSM Grade 7 Flute Scales & Arpeggios

At grade 7, scales should be prepared to a minimum speed of ♩ = 112
and arpeggios to ♩ = 54 unless specified otherwise.

Legato tongued, legato, and staccato articulations are required.

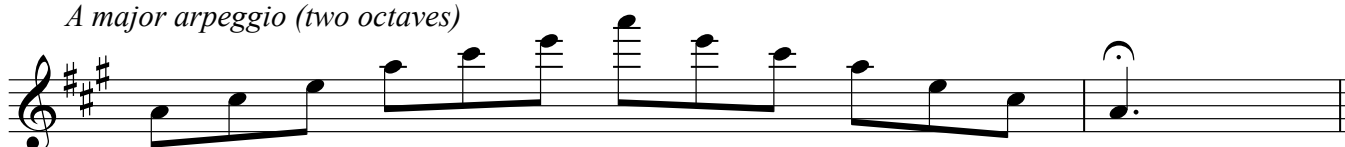
All scales & arpeggios should be known from memory.

At grade 7 BOTH harmonic and melodic minors should be prepared.

A major scale (two octaves)



A major arpeggio (two octaves)



G major scale (two octaves)



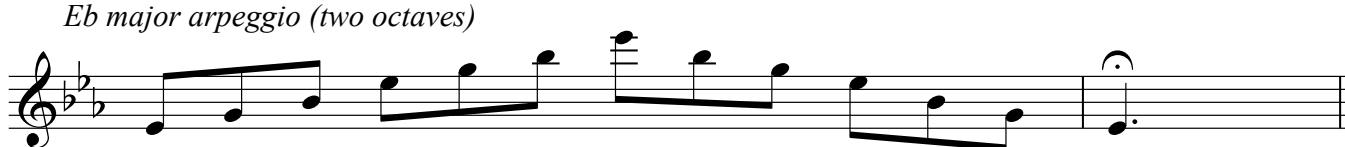
G major arpeggio (two octaves)



E♭ major scale (two octaves)



E♭ major arpeggio (two octaves)



D♭ major scale (two octaves)



D♭ major arpeggio (two octaves)



2 *B major scale (two octaves)*

Musical notation for the B major scale (two octaves) in treble clef. The key signature has three sharps (F#, C#, G#). The scale is written in eighth notes, ascending and then descending, ending with a fermata on the final B.

B major arpeggio (two octaves)

Musical notation for the B major arpeggio (two octaves) in treble clef. The key signature has three sharps. The notes are played in an arpeggiated pattern, ascending and then descending, ending with a fermata on the final B.

F major scale (extended)

Musical notation for the F major scale (extended) in treble clef. The key signature has one flat (Bb). The scale is written in eighth notes, ascending and then descending, ending with a fermata on the final F.

D major scale in thirds ♩ = 100

Musical notation for the D major scale in thirds in treble clef. The key signature has two sharps (F#, C#). The scale is written in eighth notes, ascending and then descending, ending with a fermata on the final D.

Musical notation for the D major scale in thirds in treble clef, continuing from the previous block. The key signature has two sharps. The scale is written in eighth notes, ascending and then descending, ending with a fermata on the final D.

B minor harmonic scale (two octaves)

Musical notation for the B minor harmonic scale (two octaves) in treble clef. The key signature has two sharps (F#, C#). The scale is written in eighth notes, ascending and then descending, ending with a fermata on the final B. The natural B in the descending scale is marked with a sharp sign (#).

B minor melodic scale (two octaves)

Musical notation for the B minor melodic scale (two octaves) in treble clef. The key signature has two sharps. The scale is written in eighth notes, ascending and then descending, ending with a fermata on the final B. The natural B in the descending scale is marked with a flat sign (b).

B minor arpeggio (two octaves)

Musical notation for the B minor arpeggio (two octaves) in treble clef. The key signature has two sharps. The notes are played in an arpeggiated pattern, ascending and then descending, ending with a fermata on the final B.

C# minor harmonic scale (two octaves)

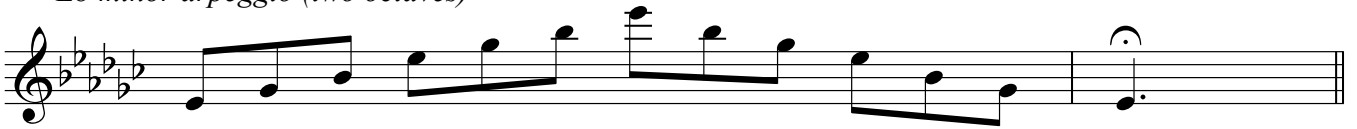
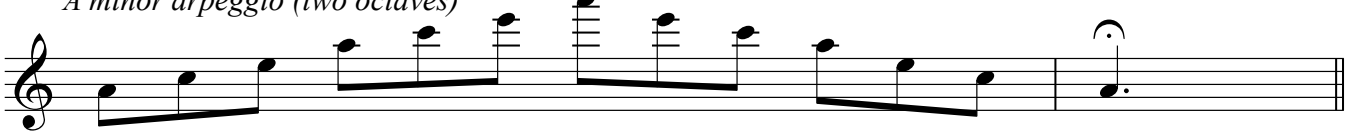
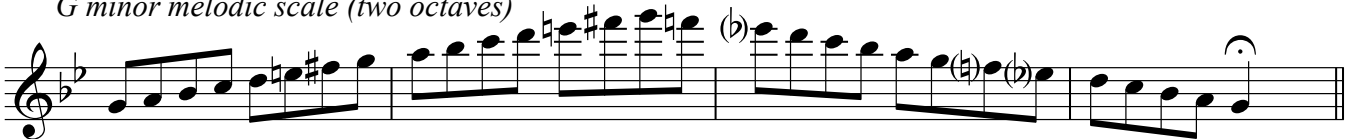
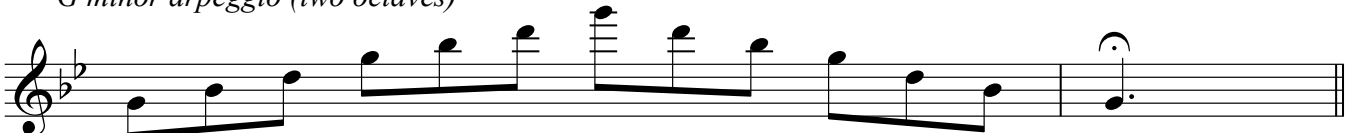
Musical notation for the C# minor harmonic scale (two octaves) in treble clef. The key signature has four sharps (F#, C#, G#, D#). The scale is written in eighth notes, ascending and then descending, ending with a fermata on the final C#. The natural C# in the descending scale is marked with a sharp sign (#).

C# minor melodic scale (two octaves)

Musical notation for the C# minor melodic scale (two octaves) in treble clef. The key signature has four sharps. The scale is written in eighth notes, ascending and then descending, ending with a fermata on the final C#. The natural C# in the descending scale is marked with a flat sign (b).

C# minor arpeggio (two octaves)

Musical notation for the C# minor arpeggio (two octaves) in treble clef. The key signature has four sharps. The notes are played in an arpeggiated pattern, ascending and then descending, ending with a fermata on the final C#.

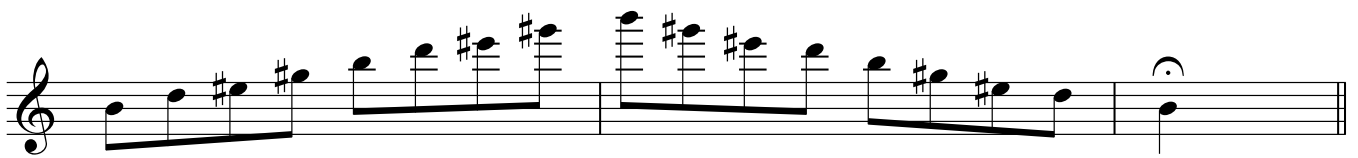
Eb minor harmonic scale (two octaves)*Eb minor melodic scale (two octaves)**Eb minor arpeggio (two octaves)**A minor harmonic scale (two octaves)**A minor melodic scale (two octaves)**A minor arpeggio (two octaves)**G minor harmonic scale (two octaves)**G minor melodic scale (two octaves)**G minor arpeggio (two octaves)**Chromatic scale starting on C# (two octaves)*

Diminished seventh starting on C# (two octaves) ♩ = 80

5



Diminished seventh starting on B (two octaves) ♩ = 80



Diminished seventh starting on A (two octaves) ♩ = 80



Diminished seventh starting on G (two octaves) ♩ = 80

