

ABRSM Grade 7 Flute Scales & Arpeggios

At grade 7, scales should be prepared to a minimum speed of ♩ = 116
and arpeggios to ♩ = **66**

Legato tongued, legato, and staccato articulations are required.

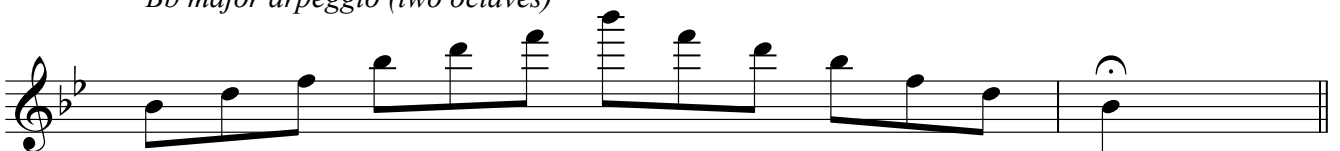
All scales & arpeggios should be known from memory.

At grade 7 BOTH harmonic and melodic minors should be prepared.

Bb major scale (two octaves)



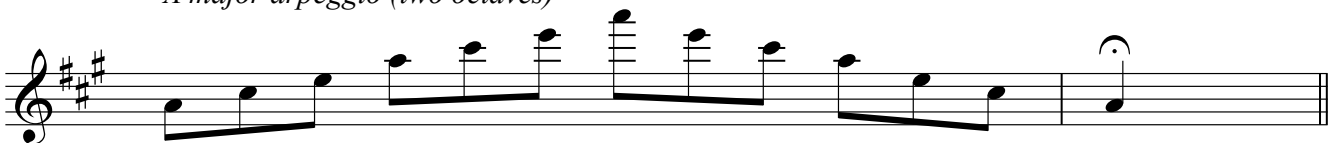
Bb major arpeggio (two octaves)



A major scale (two octaves)



A major arpeggio (two octaves)



G major scale (two octaves)



G major arpeggio (two octaves)



F major scale (two octaves)



F major arpeggio (two octaves)

Musical notation for F major arpeggio (two octaves) in treble clef. The notes are F4, A4, C5, F5, C5, A4, F4, spanning two octaves. The piece concludes with a fermata over the final F4 note.

D major scale (two octaves)

Musical notation for D major scale (two octaves) in treble clef. The notes are D4, E4, F#4, G4, A4, B4, C5, D5, C5, B4, A4, G4, F#4, E4, D4, spanning two octaves. The piece concludes with a fermata over the final D4 note.

D major arpeggio (two octaves)

Musical notation for D major arpeggio (two octaves) in treble clef. The notes are D4, F#4, A4, D5, A4, F#4, D4, spanning two octaves. The piece concludes with a fermata over the final D4 note.

E♭ major scale (two octaves)

Musical notation for E♭ major scale (two octaves) in treble clef. The notes are E♭4, F4, G4, A4, B♭4, C5, D5, E♭5, D5, C5, B♭4, A4, G4, F4, E♭4, spanning two octaves. The piece concludes with a fermata over the final E♭4 note.

E♭ major arpeggio (two octaves)

Musical notation for E♭ major arpeggio (two octaves) in treble clef. The notes are E♭4, G4, B♭4, E♭5, B♭4, G4, E♭4, spanning two octaves. The piece concludes with a fermata over the final E♭4 note.

E major scale (two octaves)

Musical notation for E major scale (two octaves) in treble clef. The notes are E4, F#4, G#4, A4, B4, C#4, D5, E5, D5, C#4, B4, A4, G#4, F#4, E4, spanning two octaves. The piece concludes with a fermata over the final E4 note.

E major arpeggio (two octaves)

Musical notation for E major arpeggio (two octaves) in treble clef. The notes are E4, G#4, B4, E5, B4, G#4, E4, spanning two octaves. The piece concludes with a fermata over the final E4 note.

F# major scale (two octaves)

Musical notation for F# major scale (two octaves) in treble clef. The notes are F#4, G#4, A#4, B4, C#4, D#4, E5, F#5, E5, D#4, C#4, B4, A#4, G#4, F#4, spanning two octaves. The piece concludes with a fermata over the final F#4 note.

F# major arpeggio (two octaves)

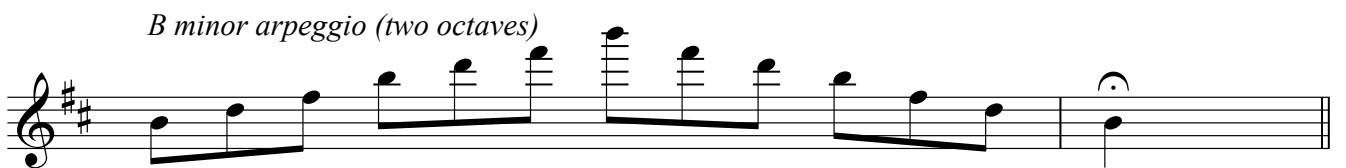
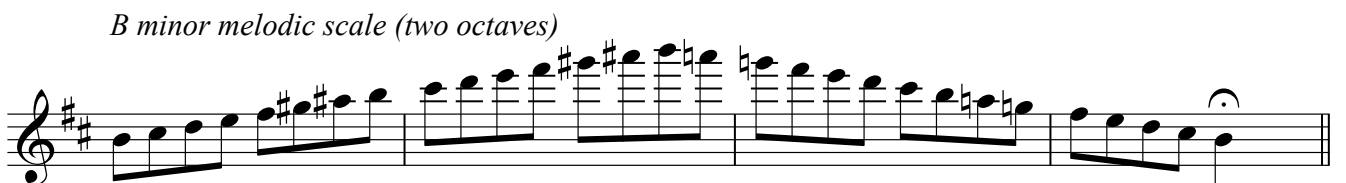
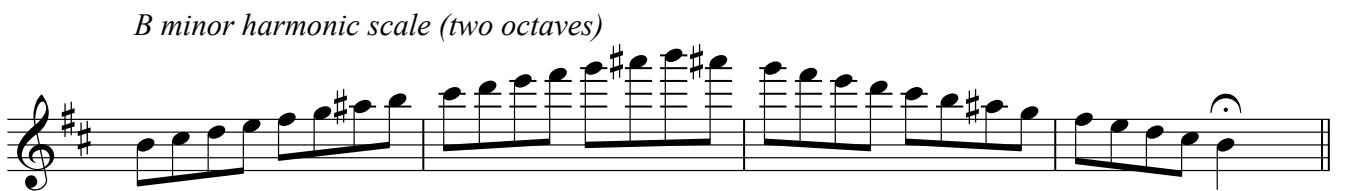
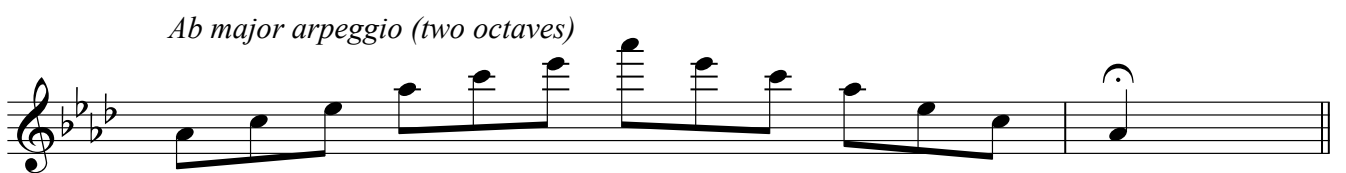
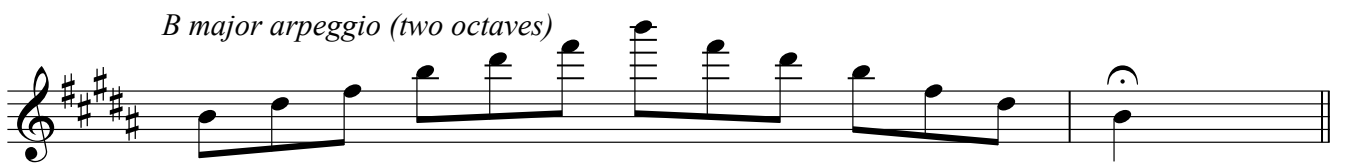
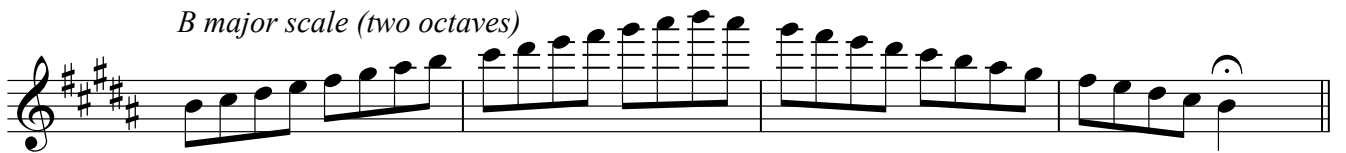
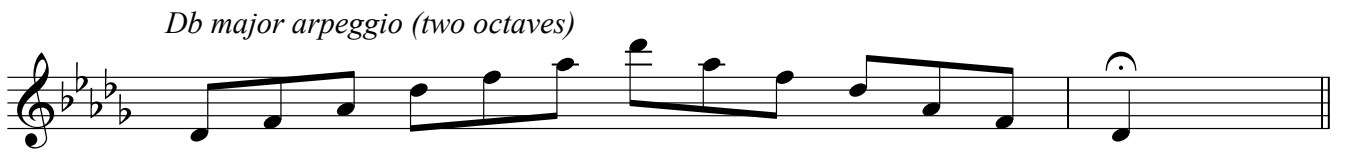
Musical notation for F# major arpeggio (two octaves) in treble clef. The notes are F#4, A#4, C#4, F#5, C#4, A#4, F#4, spanning two octaves. The piece concludes with a fermata over the final F#4 note.

C major scale (two octaves)

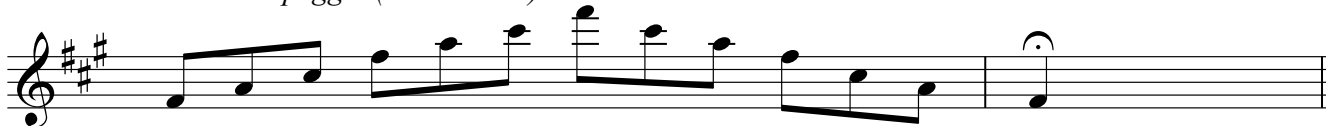
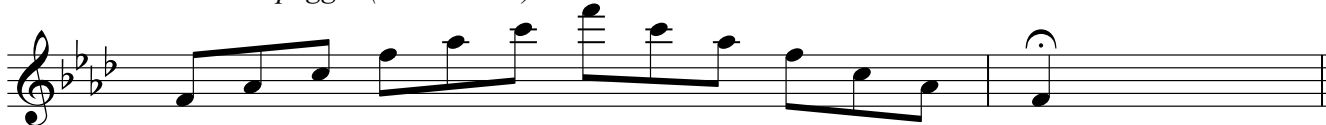
Musical notation for C major scale (two octaves) in treble clef. The notes are C4, D4, E4, F4, G4, A4, B4, C5, B4, A4, G4, F4, E4, D4, C4, spanning two octaves. The piece concludes with a fermata over the final C4 note.

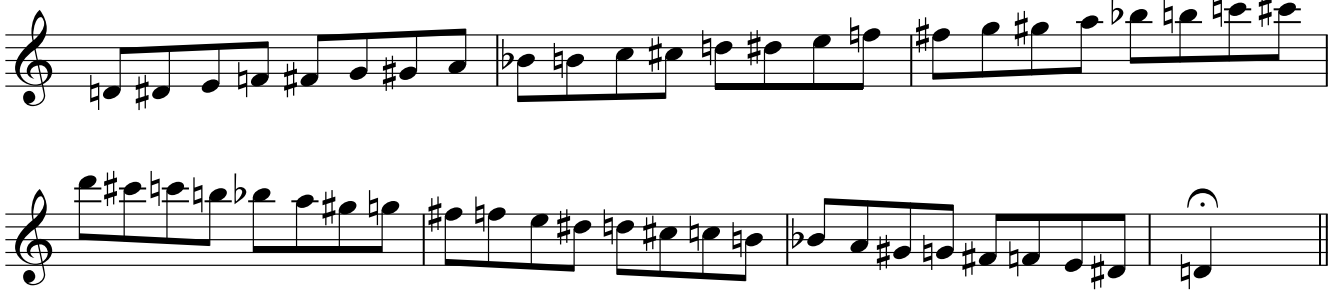
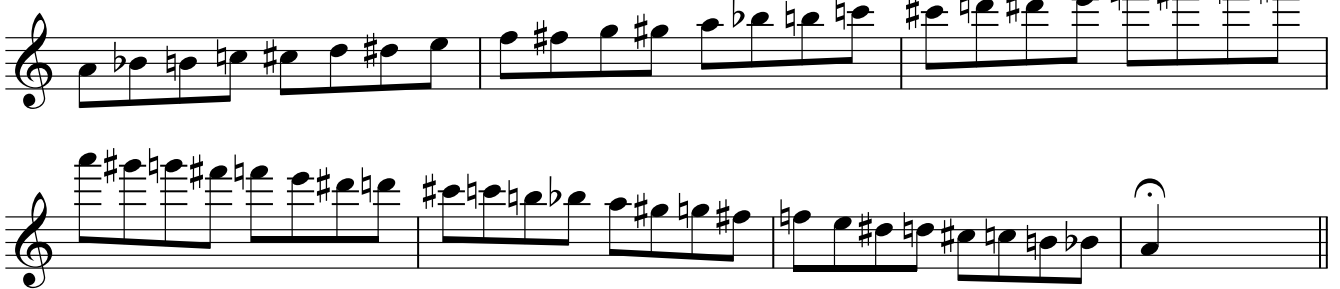
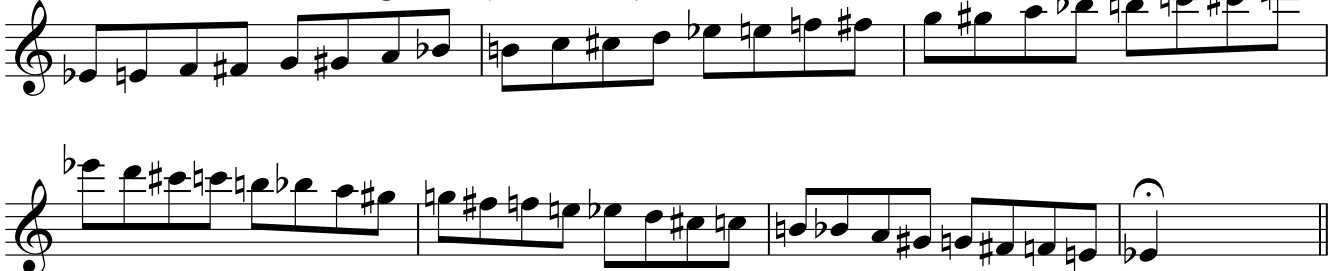
C major arpeggio (two octaves)

Musical notation for C major arpeggio (two octaves) in treble clef. The notes are C4, E4, G4, C5, G4, E4, C4, spanning two octaves. The piece concludes with a fermata over the final C4 note.



C# minor melodic scale (two octaves)*C# minor arpeggio (two octaves)**E minor harmonic scale (two octaves)**E minor melodic scale (two octaves)**E minor arpeggio (two octaves)**Eb minor harmonic scale (two octaves)**Eb minor melodic scale (two octaves)**Eb minor arpeggio (two octaves)**G# minor harmonic scale (two octaves)**G# minor melodic scale (two octaves)*

F# minor harmonic scale (two octaves)*F# minor melodic scale (two octaves)**F# minor arpeggio (two octaves)**F minor harmonic scale (two octaves)**F minor melodic scale (two octaves)**F minor arpeggio (two octaves)**D minor harmonic scale (two octaves)**D minor melodic scale (two octaves)**D minor arpeggio (two octaves)**C minor harmonic scale (two octaves)**C minor melodic scale (two octaves)*

C minor arpeggio (two octaves)*Chromatic scale starting on D (two octaves)**Chromatic scale starting on C (two octaves)**Chromatic scale starting on C# (two octaves)**Chromatic scale starting on A (two octaves)**Chromatic scale starting on Eb (two octaves)*

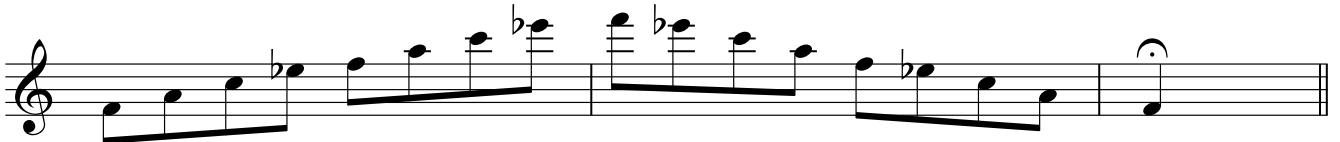
*Chromatic scale starting on E (two octaves)**Chromatic scale starting on F (two octaves)**Chromatic scale starting on F# (two octaves)**Chromatic scale starting on G (two octaves)**Chromatic scale starting on Ab (two octaves)**Chromatic scale starting on Bb (two octaves)*



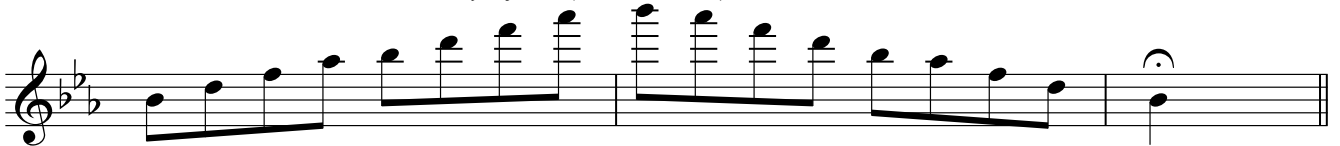
Chromatic scale starting on B (two octaves)



Dominant seventh in the key of Bb (two octaves)



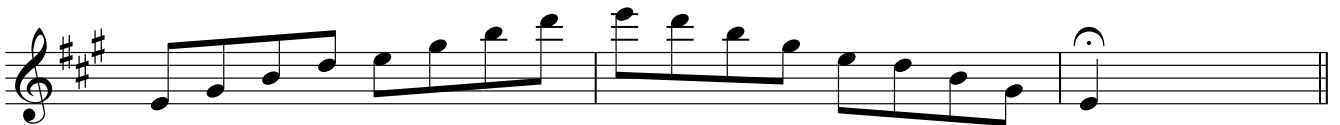
Dominant seventh in the key of Eb (two octaves)



Dominant seventh in the key of C (two octaves)



Dominant seventh in the key of A (two octaves)



Dominant seventh in the key of F (two octaves)



Dominant seventh in the key of F# (two octaves)



Diminished seventh starting on C# (two octaves)



10 *Diminished seventh starting on D (two octaves)*



Diminished seventh starting on C (two octaves)

