

2018 onwards

ABRSM Grade 7 Saxophone Scales & Arpeggios

At grade 7, scales should be prepared to a minimum speed of ♩ = 112
and arpeggios to ♩ = 54 unless specified otherwise.

Legato tongued, slurred, and staccato articulations are required.

All scales & arpeggios should be known from memory.

At grade 7 BOTH harmonic AND melodic minors should be known.

F# major scale (a twelfth)



F# major arpeggio (a twelfth)



G major scale (a twelfth)



G major arpeggio (a twelfth)



C major scale (two octaves)



C major arpeggio (two octaves)

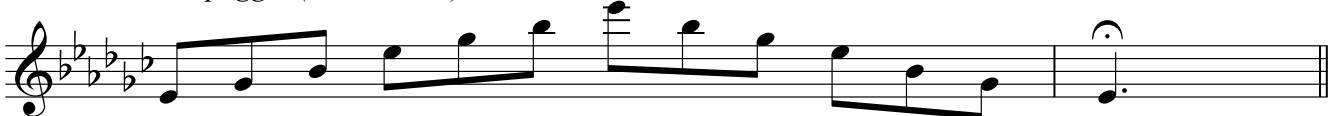


Eb major scale (two octaves)



Eb major arpeggio (two octaves)



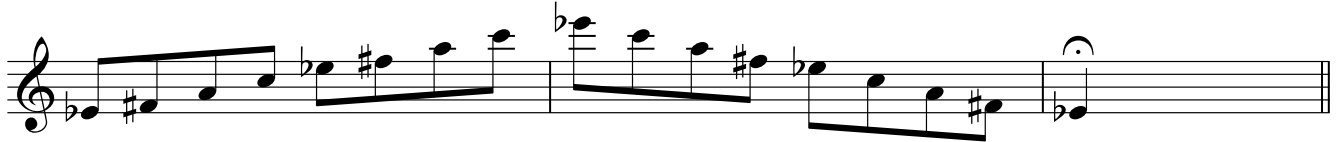
C minor harmonic scale (two octaves)*C minor melodic scale (two octaves)**C minor arpeggio (two octaves)**E^b minor harmonic scale (two octaves)**E^b minor melodic scale (two octaves)**E^b minor arpeggio (two octaves)**E minor harmonic scale (two octaves)**E minor melodic scale (two octaves)**E minor arpeggio (two octaves)**Chromatic scale starting on C (two octaves)*

Chromatic scale starting on Eb (two octaves)
Chromatic scale starting on F# (a twelfth)
Chromatic scale starting on G (a twelfth)
Dominant seventh in the key of F (two octaves) ♩ = 80
Dominant seventh in the key of Ab (two octaves) ♩ = 80
Dominant seventh in the key of C (a twelfth) ♩ = 80
Dominant seventh in the key of B (a twelfth) ♩ = 80
Diminished seventh starting on C (two octaves) ♩ = 80

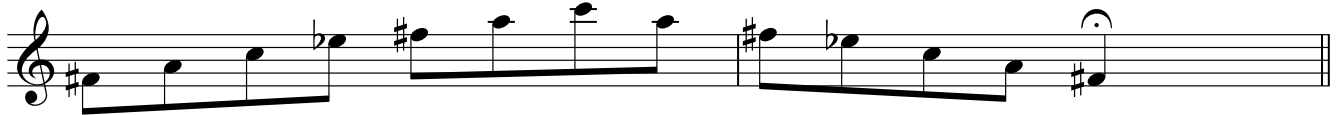
Diminished seventh starting on Eb (two octaves) ♩ = 80



Diminished seventh starting on Eb (two octaves) easier to read, enharmonic version.! ♩ = 80



Diminished seventh starting on F# (a twelfth) ♩ = 80



Diminished seventh starting on G (a twelfth) ♩ = 80

