

2018 onwards

# ABRSM Grade 8 Clarinet Scales & Arpeggios.

At grade 8, scales should be prepared to a minimum speed of ♩ = 132  
and arpeggios to ♩ = 63 unless specified otherwise.

Legato tongued, legato, and staccato articulations are required.

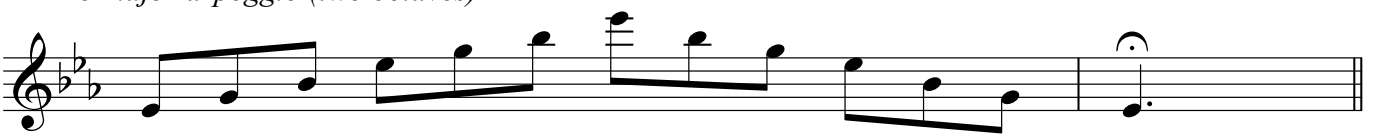
All scales and arpeggios should be know by memory.

BOTH harmonic AND melodic minors should be prepared at grade 8.

*E<sub>b</sub> major scale (two octaves)*



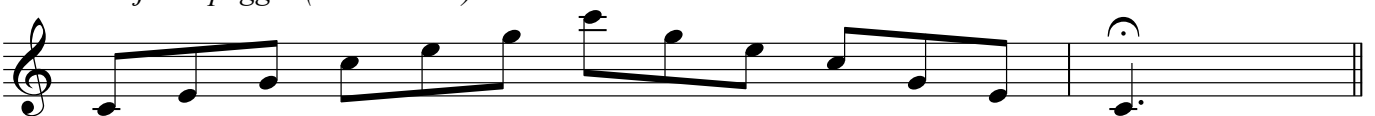
*E<sub>b</sub> major arpeggio (two octaves)*



*C major scale (two octaves)*



*C major arpeggio (two octaves)*



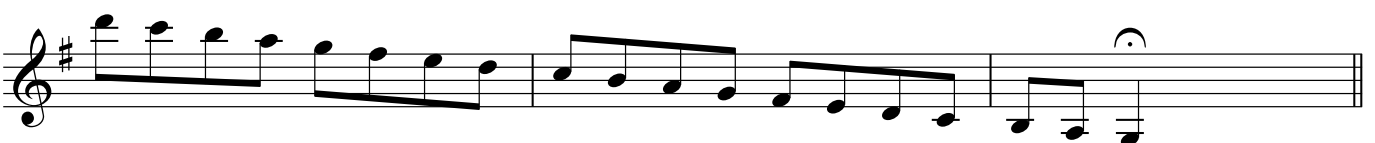
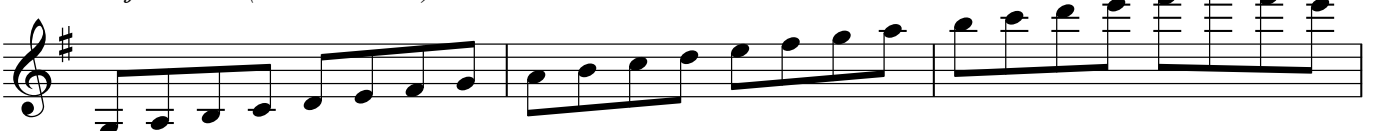
*B major scale (two octaves)*



*B major arpeggio (two octaves)*



*G major scale (three octaves)*



*G major arpeggio (three octaves)*



*A major scale (extended)*

Musical notation for the A major scale (extended) in treble clef, key signature of three sharps (F#, C#, G#). The scale is written across two staves, showing the ascending and descending lines with a repeat sign at the end.

*A major arpeggio (extended)*

Musical notation for the A major arpeggio (extended) in treble clef, key signature of three sharps (F#, C#, G#). The arpeggio is written across two staves, showing the ascending and descending lines with a repeat sign at the end.

*F# major scale (three octaves)*

Musical notation for the F# major scale (three octaves) in treble clef, key signature of four sharps (F#, C#, G#, D#). The scale is written across two staves, showing the ascending and descending lines with a repeat sign at the end.

*F# major arpeggio (three octaves)*

Musical notation for the F# major arpeggio (three octaves) in treble clef, key signature of four sharps (F#, C#, G#, D#). The arpeggio is written across two staves, showing the ascending and descending lines with a repeat sign at the end.

*G minor harmonic scale (three octaves)*

Musical notation for the G minor harmonic scale (three octaves) in treble clef, key signature of two flats (Bb, Eb). The scale is written across two staves, showing the ascending and descending lines with a repeat sign at the end.

*G minor melodic scale (three octaves)*

Musical notation for the G minor melodic scale (three octaves) in treble clef, key signature of two flats (Bb, Eb). The scale is written across two staves, showing the ascending and descending lines with a repeat sign at the end.

*G minor arpeggio (three octaves)*

Musical notation for the G minor arpeggio (three octaves) in treble clef, key signature of two flats (Bb, Eb). The arpeggio is written across two staves, showing the ascending and descending lines with a repeat sign at the end.

*C minor harmonic scale (two octaves)**C minor melodic scale (two octaves)**C minor arpeggio (two octaves)**Eb minor harmonic scale (two octaves)**Eb minor melodic scale (two octaves)**Eb minor arpeggio (two octaves)**E minor harmonic scale (extended)**E minor arpeggio (extended)**F# minor harmonic scale (three octaves)*

*F# minor melodic scale (three octaves)*

Two staves of music showing the F# minor melodic scale over three octaves. The first staff contains the ascending scale, and the second staff contains the descending scale. The key signature has two sharps (F# and C#).

*F# minor arpeggio (three octaves)*

Two staves of music showing the F# minor arpeggio over three octaves. The first staff contains the ascending arpeggio, and the second staff contains the descending arpeggio. The key signature has two sharps (F# and C#).

*B minor harmonic scale (two octaves)*

Two staves of music showing the B minor harmonic scale over two octaves. The first staff contains the ascending scale, and the second staff contains the descending scale. The key signature has two sharps (F# and C#).

*B minor melodic scale (two octaves)*

Two staves of music showing the B minor melodic scale over two octaves. The first staff contains the ascending scale, and the second staff contains the descending scale. The key signature has two sharps (F# and C#).

*B minor arpeggio (two octaves)*

Two staves of music showing the B minor arpeggio over two octaves. The first staff contains the ascending arpeggio, and the second staff contains the descending arpeggio. The key signature has two sharps (F# and C#).

*Chromatic scale starting on C (two octaves)*

Two staves of music showing a chromatic scale starting on C over two octaves. The first staff contains the ascending scale, and the second staff contains the descending scale. The key signature has no sharps or flats.

*Chromatic scale starting on Eb (two octaves)*

Two staves of music showing a chromatic scale starting on Eb over two octaves. The first staff contains the ascending scale, and the second staff contains the descending scale. The key signature has one flat (Bb).





Scale in thirds, D major (over two octaves) ♩ = 120

Musical notation for a scale in thirds in D major over two octaves. The first staff shows the ascending scale, and the second staff shows the descending scale. The tempo is marked as ♩ = 120.

Whole tone scale starting on E (three octaves)

Musical notation for a whole tone scale starting on E over three octaves. The first staff shows the ascending scale, and the second staff shows the descending scale.

Whole tone scale starting on Db (two octaves)

Musical notation for a whole tone scale starting on Db over two octaves. The first staff shows the ascending scale, and the second staff shows the descending scale.