

ABRSM Grade 8 Clarinet Scales & Arpeggios.

At grade 8, scales should be prepared to a minimum speed of $\text{♩} = 132$
and arpeggios to $\text{♩} = 76$

Legato tongued, legato, and staccato articulations are required.

All scales and arpeggios should be know by memory.

BOTH harmonic AND melodic minors should be prepared at grade 8.

B \flat Major scale (two octaves)



B \flat Major arpeggio (two octaves)



A \flat Major scale (two octaves)



A \flat major arpeggio (two octaves)



B Major scale (two octaves)



B major arpeggio (two octaves)



E major scale (three octaves)

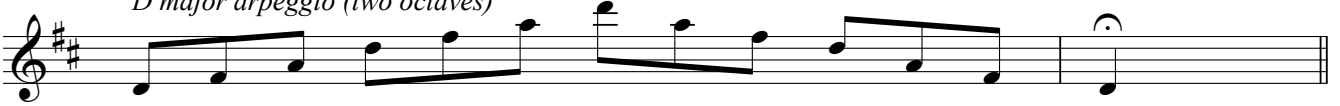
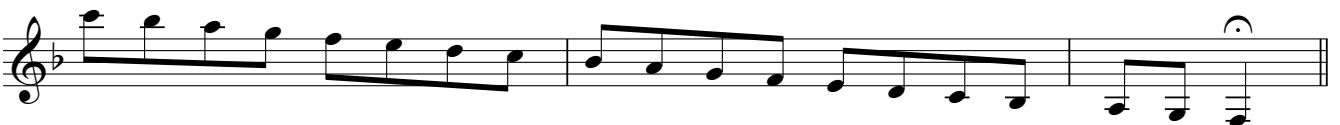


E major arpeggio (three octaves)



D major scale (two octaves)



D major arpeggio (two octaves)*Db major scale (two octaves)**Db major arpeggio (two octaves)**Eb major scale (two octaves)**Eb major arpeggio (two octaves)**C major scale (two octaves)**C major arpeggio (two octaves)**F major scale (three octaves)**F major arpeggio (three octaves)*

G major scale (three octaves)



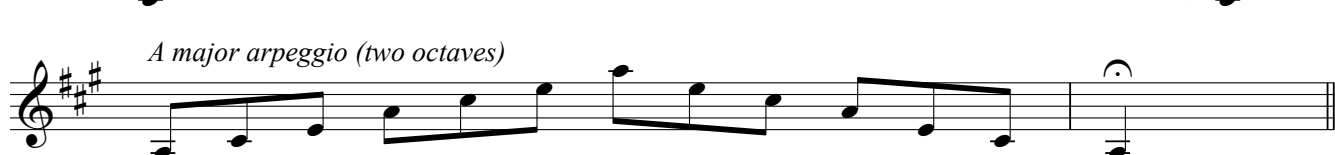
G major arpeggio (three octaves)



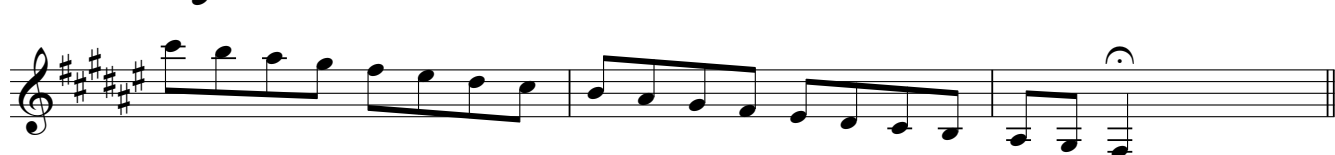

A major scale (two octaves)



A major arpeggio (two octaves)



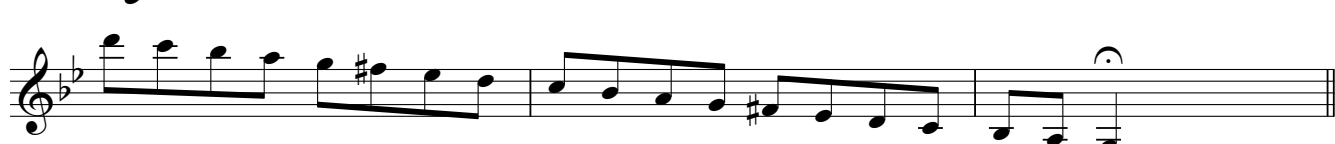
F# major scale (three octaves)



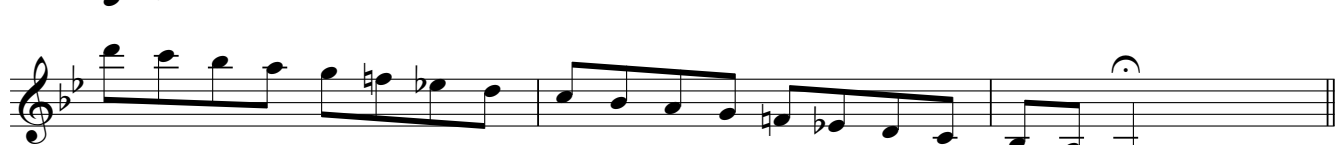
F# major arpeggio (three octaves)



G minor harmonic scale (three octaves)

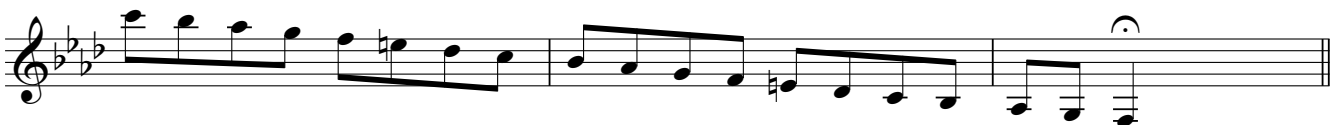
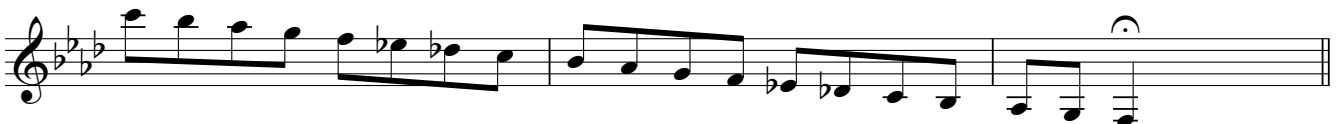


G minor melodic scale (three octaves)



G minor arpeggio (three octaves)



C minor harmonic scale (two octaves)*C minor melodic scale (two octaves)**C minor arpeggio (two octaves)**D minor harmonic scale (two octaves)**D minor melodic scale (two octaves)**D minor arpeggio (two octaves)**D# minor harmonic scale (two octaves) also known as Eb minor harmonic**D# minor melodic scale (two octaves) also known as Eb minor melodic**D# minor arpeggio. (also known as Eb minor arpeggio)**F minor harmonic scale (three octaves)**F minor melodic scale (three octaves)*

Bb minor melodic scale (two octaves)*Bb minor arpeggio (two octaves)**A minor harmonic scale (two octaves)**A minor melodic scale (two octaves)**A minor arpeggio (two octaves)**G# minor harmonic scale (two octaves)**G# minor melodic scale (two octaves)**G# minor arpeggio (two octaves)**B minor harmonic scale (two octaves)**B minor melodic scale (two octaves)**B minor arpeggio (two octaves)**C# minor harmonic scale (two octaves)*

C# minor melodic scale (two octaves)

Musical notation for the C# minor melodic scale over two octaves. The key signature has three sharps (F#, C#, G#). The scale starts on C#4 and ends on C#5 with a fermata.

C# minor arpeggio (two octaves)

Musical notation for the C# minor arpeggio over two octaves. The notes are C#4, E4, G#4, B4, A4, F#4, E4, C#4, ascending and then descending.

Chromatic scale starting on middle C (two octaves)

Musical notation for a chromatic scale starting on middle C (C4) and spanning two octaves. It includes both ascending and descending passages.

Chromatic scale starting on F (three octaves)

Musical notation for a chromatic scale starting on F4 and spanning three octaves. It includes both ascending and descending passages.

Chromatic scale starting on C# (Db) (two octaves)

Musical notation for a chromatic scale starting on C#4 (or Db4) and spanning two octaves. It includes both ascending and descending passages.

Chromatic scale starting on D (two octaves)

Musical notation for a chromatic scale starting on D4 and spanning two octaves. It includes both ascending and descending passages.

Chromatic scale starting on D# (Eb) (two octaves)

Musical notation for a chromatic scale starting on D#4 (or Eb4) and spanning two octaves. It includes both ascending and descending passages.

Chromatic scale starting on E (three octaves)

Musical notation for a chromatic scale starting on E (three octaves). The notation is presented in two systems, each with two staves. The first system shows the scale ascending and then descending. The second system shows the scale ascending and then descending, ending with a fermata on the final note.

Chromatic scale starting on F# (three octaves)

Musical notation for a chromatic scale starting on F# (three octaves). The notation is presented in two systems, each with two staves. The first system shows the scale ascending and then descending. The second system shows the scale ascending and then descending, ending with a fermata on the final note.

Chromatic scale starting on G (three octaves)

Musical notation for a chromatic scale starting on G (three octaves). The notation is presented in two systems, each with two staves. The first system shows the scale ascending and then descending. The second system shows the scale ascending and then descending, ending with a fermata on the final note.

Chromatic scale starting on G# (two octaves)

Musical notation for a chromatic scale starting on G# (two octaves). The notation is presented in two systems, each with two staves. The first system shows the scale ascending and then descending. The second system shows the scale ascending and then descending, ending with a fermata on the final note.

Chromatic scale starting on Bb (two octaves)

Musical notation for a chromatic scale starting on Bb (two octaves). The notation is presented in two systems, each with two staves. The first system shows the scale ascending and then descending. The second system shows the scale ascending and then descending, ending with a fermata on the final note.

Chromatic scale starting on B (two octaves)

Chromatic scale starting on B (two octaves)

Chromatic scale starting on A (two octaves)

Chromatic scale starting on A (two octaves)

Dominant seventh in the KEY of Bb (three octaves)

Dominant seventh in the KEY of Bb (three octaves)

Dominant seventh in the KEY of Db (two octaves)

Dominant seventh in the KEY of Db (two octaves)

Dominant seventh in the KEY of A (three octaves)

Dominant seventh in the KEY of A (three octaves)

Dominant seventh in the KEY of Eb (two octaves)

Dominant seventh in the KEY of Eb (two octaves)

Dominant seventh in the KEY of G (two octaves)

Dominant seventh in the KEY of G (two octaves)

Dominant seventh in the KEY of F# (two octaves)

Dominant seventh in the KEY of F# (two octaves)

Dominant seventh in the KEY of D (two octaves)

Dominant seventh in the KEY of D (two octaves)

Dominant seventh in the KEY of E (two octaves)



Dominant seventh in the KEY of F (two octaves)



Dominant seventh in the KEY of Ab (two octaves)



Dominant seventh in the KEY of C (three octaves)



Dominant seventh in the KEY of B (three octaves)



Diminished scale starting on F (three octaves)



Diminished scale starting on E (three octaves)



Diminished scale starting on F# (three octaves)



Diminished scale starting on C (two octaves)



Diminished scale starting on C# (two octaves)



Diminished seventh starting on D (two octaves)



Diminished seventh starting on Eb (two octaves)



Diminished seventh starting on G (three octaves)



Diminished seventh starting on G# (Ab) (two octaves)



Diminished seventh starting on A (two octaves)



Diminished seventh starting on Bb (two octaves)



Diminished seventh starting on B (two octaves)



Scale in thirds, C major (over two octaves)



Scale in thirds, D major (over two octaves)



Whole tone scale starting on B (two octaves)



Whole tone scale starting on C (two octaves)

