

2018 onwards

# ABRSM Grade 8 Flute Scales & Arpeggios

At grade 8, scales should be prepared to a minimum speed of ♩ = 132  
and arpeggios to ♩. = 63 unless specified otherwise.

Legato tongued, legato, and staccato articulations are required.

All scales & arpeggios should be known from memory.

At grade 8 BOTH harmonic and melodic minors should be prepared.

*E<sub>b</sub> major scale (two octaves)*



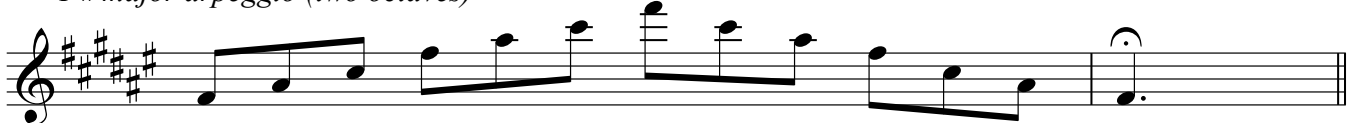
*E<sub>b</sub> major arpeggio (two octaves)*



*F# major scale (two octaves)*



*F# major arpeggio (two octaves)*



*C major scale (three octaves)*



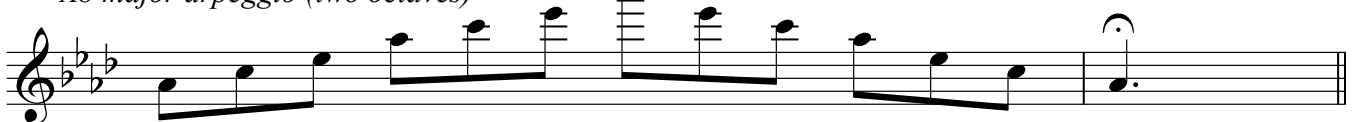
*C major arpeggio (three octaves)*



*A<sub>b</sub> major scale (two octaves)*



*A<sub>b</sub> major arpeggio (two octaves)*

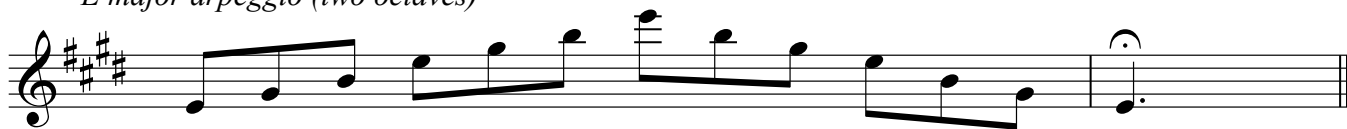


2

*E major scale (two octaves)*



*E major arpeggio (two octaves)*



*G major scale (extended)*



*G major arpeggio (extended)*



*E minor harmonic scale (two octaves)*



*E minor melodic scale (two octaves)*



*E minor arpeggio (two octaves)*



*Eb minor harmonic scale (two octaves)*



*Eb minor melodic scale (two octaves)*



*Eb minor arpeggio (two octaves)*



*G# minor harmonic scale (two octaves)*



*G# minor melodic scale (two octaves)*

Musical notation for G# minor melodic scale (two octaves). The scale starts on G#4 and ends on G#5. It includes natural signs for the 3rd and 6th degrees in both directions. A circled '3' is at the end of the staff.

*G# minor arpeggio (two octaves)*

Musical notation for G# minor arpeggio (two octaves).

*F# minor harmonic scale (two octaves)*

Musical notation for F# minor harmonic scale (two octaves).

*F# minor melodic scale (two octaves)*

Musical notation for F# minor melodic scale (two octaves).

*F# minor arpeggio (two octaves)*

Musical notation for F# minor arpeggio (two octaves).

*F minor harmonic scale (extended)*

Musical notation for F minor harmonic scale (extended).

Musical notation for F minor harmonic scale (extended), second line.

*F minor harmonic arpeggio (extended)*

Musical notation for F minor harmonic arpeggio (extended).

*C minor harmonic scale (three octaves)*

Musical notation for C minor harmonic scale (three octaves).

Musical notation for C minor harmonic scale (three octaves), second line.

4 *C minor melodic scale (three octaves)*

Two staves of musical notation for the C minor melodic scale over three octaves. The first staff shows the ascending scale from C4 to C6. The second staff shows the descending scale from C6 to C4, with a fermata over the final C4 note.

*C minor arpeggio (three octaves)*

Two staves of musical notation for the C minor arpeggio over three octaves. The first staff shows the ascending arpeggio from C4 to C6. The second staff shows the descending arpeggio from C6 to C4, with a fermata over the final C4 note.

*Chromatic scale starting on C (three octaves)*

Three staves of musical notation for a chromatic scale starting on C over three octaves. The first staff shows the ascending scale from C4 to C6. The second staff shows the descending scale from C6 to C4. The third staff shows the final C4 note with a fermata.

*Chromatic scale starting on Eb (two octaves)*

Two staves of musical notation for a chromatic scale starting on Eb over two octaves. The first staff shows the ascending scale from Eb3 to Eb5. The second staff shows the descending scale from Eb5 to Eb3, with a fermata over the final Eb3 note.

*Chromatic scale starting on E (two octaves)*

Two staves of musical notation for a chromatic scale starting on E over two octaves. The first staff shows the ascending scale from E4 to E6. The second staff shows the descending scale from E6 to E4, with a fermata over the final E4 note.

*Chromatic scale starting on F# (two octaves)*

5

*Chromatic scale starting on Ab (two octaves)*

*Scale in thirds in Bb major (over two octaves) ♩ = 120*

*Scale in thirds in G major (over two octaves) ♩ = 120*

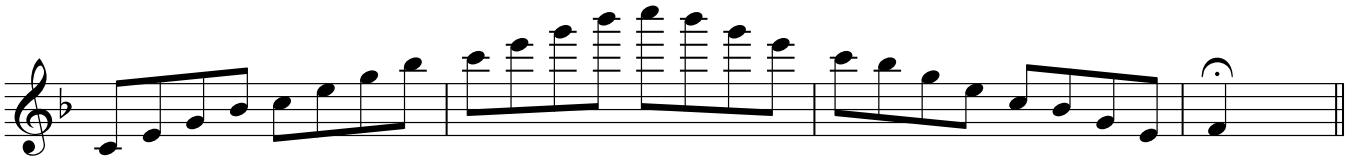
*Whole tone scale on C (three octaves)*

*Whole tone scale on F (two octaves)*

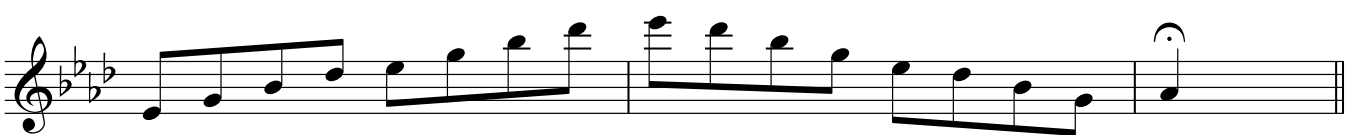
6 *Dominant seventh in the key of A (two octaves)* ♩ = 96



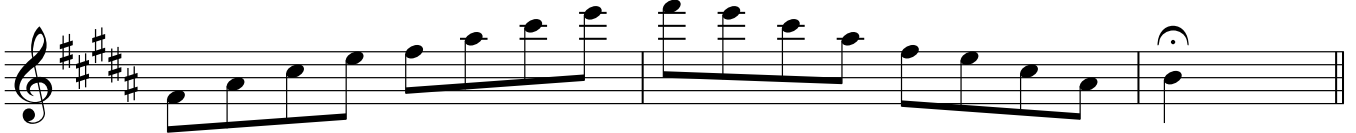
*Dominant seventh in the key of F (three octaves)* ♩ = 96



*Dominant seventh in the key of Ab (two octaves)* ♩ = 96



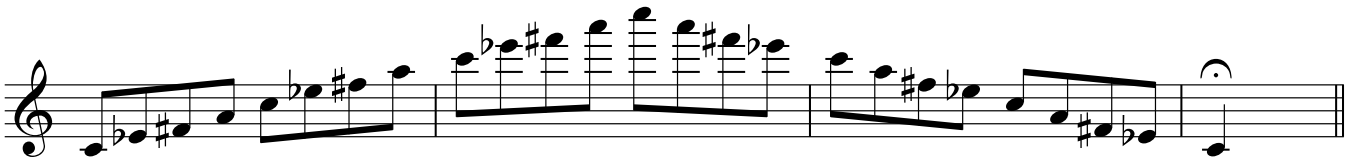
*Dominant seventh in the key of B (two octaves)* ♩ = 96



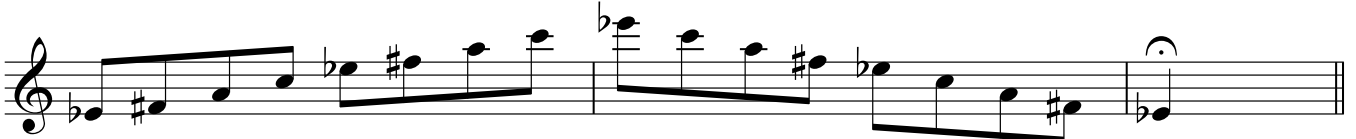
*Dominant seventh in the key of Db (two octaves)* ♩ = 96



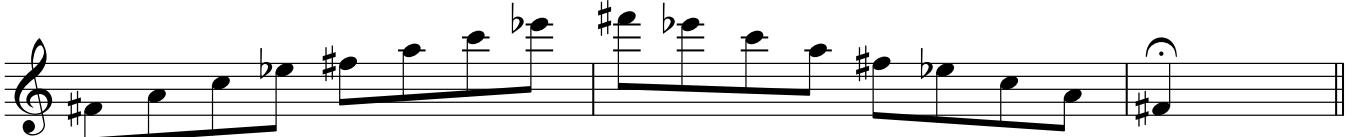
*Diminished seventh starting on C (three octaves)* ♩ = 96



*Diminished seventh starting on Eb (two octaves)* ♩ = 96



*Diminished seventh starting on F# (two octaves)* ♩ = 96



*Diminished seventh starting on E (two octaves)* ♩ = 96



*Diminished seventh starting on Ab (two octaves)* ♩ = 96

