

ABRSM Grade 8 Flute scales & Arpeggios

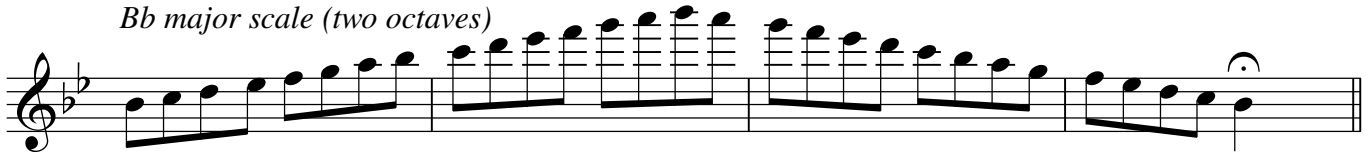
At grade 8, scales should be prepared to a minimum speed of ♩ = 132
and arpeggios to ♩ = **76**

Leagto tongued, legato, and staccato articulations are required.

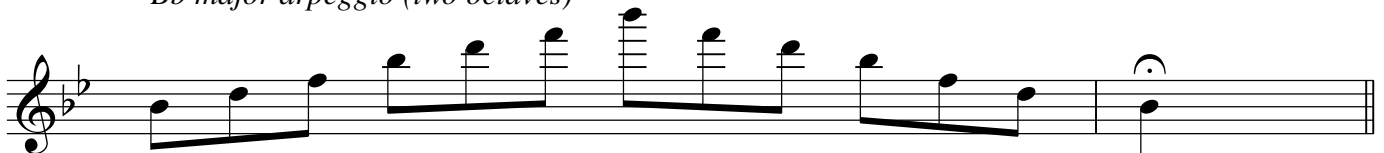
All scales & arpeggios should be known from memory.

At grade 8 BOTH harmonic and melodic minors should be prepared.

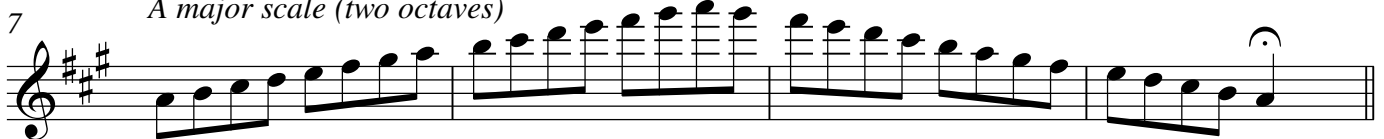
Bb major scale (two octaves)



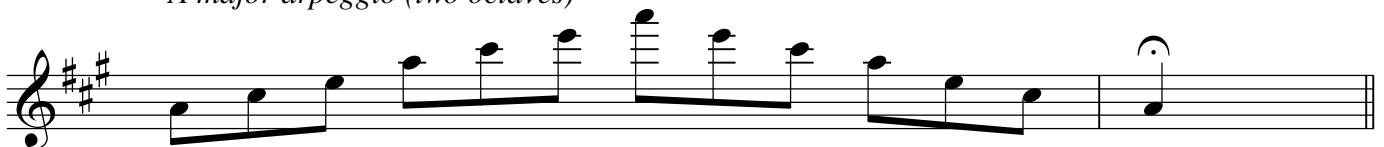
Bb major arpeggio (two octaves)



7 *A major scale (two octaves)*



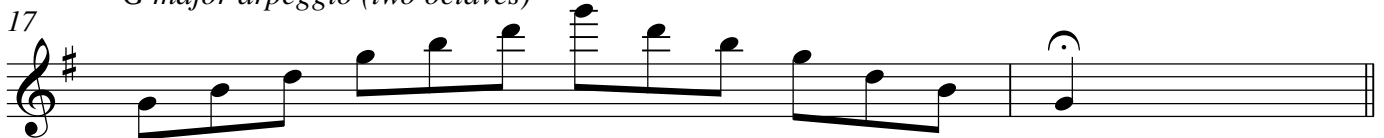
A major arpeggio (two octaves)



13 *G major scale (two octaves)*



G major arpeggio (two octaves)



19 *F major scale (two octaves)*



F major arpeggio (two octaves)

23

Musical notation for *F major arpeggio (two octaves)*, measures 23-24.

D major scale (two octaves)

25

Musical notation for *D major scale (two octaves)*, measures 25-28.

D major arpeggio (two octaves)

29

Musical notation for *D major arpeggio (two octaves)*, measures 29-30.

E major scale (two octaves)

31

Musical notation for *E major scale (two octaves)*, measures 31-34.

E major arpeggio (two octaves)

35

Musical notation for *E major arpeggio (two octaves)*, measures 35-36.

E \flat major scale (two octaves)

37

Musical notation for *E \flat major scale (two octaves)*, measures 37-40.

E \flat major arpeggio (two octaves)

41

Musical notation for *E \flat major arpeggio (two octaves)*, measures 41-42.

F# major scale (two octaves)

43

Musical notation for *F# major scale (two octaves)*, measures 43-46.

F# major arpeggio (two octaves)

47

Musical notation for *F# major arpeggio (two octaves)*, measures 47-48.

C major scale (three octaves)

49

Musical notation for *C major scale (three octaves)*, measures 49-51.

52

Musical notation for *C major scale (three octaves)*, measures 51-52.

55 *C major arpeggio (three octaves)*

A musical staff in treble clef with a key signature of one flat (Bb). The notation shows an arpeggiated C major triad (C-E-G) repeated three times across the staff, with each note moving up an octave. The piece concludes with a whole note C on the first line.

Db major scale (two octaves)

A musical staff in treble clef with a key signature of three flats (Bbb). The notation shows a two-octave ascending and descending scale of the Db major triad (Db-Fb-Ab).

Db major arpeggio (two octaves)

A musical staff in treble clef with a key signature of three flats (Bbb). The notation shows an arpeggiated Db major triad (Db-Fb-Ab) repeated twice across the staff, with each note moving up an octave. The piece concludes with a whole note Db on the first line.

61

A musical staff in treble clef with a key signature of three flats (Bbb). The notation shows an arpeggiated Db major triad (Db-Fb-Ab) repeated twice across the staff, with each note moving up an octave. The piece concludes with a whole note Db on the first line.

63 *B major scale (two octaves)*

A musical staff in treble clef with a key signature of two sharps (F#C#). The notation shows a two-octave ascending and descending scale of the B major triad (B-D#-F#).

67 *B major arpeggio (two octaves)*

A musical staff in treble clef with a key signature of two sharps (F#C#). The notation shows an arpeggiated B major triad (B-D#-F#) repeated twice across the staff, with each note moving up an octave. The piece concludes with a whole note B on the first line.

69 *Ab major scale (two octaves)*

A musical staff in treble clef with a key signature of three flats (Bbb). The notation shows a two-octave ascending and descending scale of the Ab major triad (Ab-Fb-Ab).

73 *Ab major arpeggio (two octaves)*

A musical staff in treble clef with a key signature of three flats (Bbb). The notation shows an arpeggiated Ab major triad (Ab-Fb-Ab) repeated twice across the staff, with each note moving up an octave. The piece concludes with a whole note Ab on the first line.

B minor harmonic scale (two octaves)

A musical staff in treble clef with a key signature of two sharps (F#C#). The notation shows a two-octave ascending and descending harmonic minor scale of B minor (B-D#-F#-G-A-B).

79 *B minor melodic scale (two octaves)*

A musical staff in treble clef with a key signature of two sharps (F#C#). The notation shows a two-octave ascending and descending melodic minor scale of B minor (B-D#-E-F#-G-A-B).

83 *B minor arpeggio (two octaves)*

A musical staff in treble clef with a key signature of two sharps (F#C#). The notation shows an arpeggiated B minor triad (B-D#-F#) repeated twice across the staff, with each note moving up an octave. The piece concludes with a whole note B on the first line.

85 *C# minor harmonic scale (two octaves)*

Musical notation for the C# minor harmonic scale over two octaves. The scale is written in treble clef with a key signature of three sharps (F#, C#, G#). It consists of an ascending line of eighth notes and a descending line of eighth notes, ending with a whole note C#.

89 *C# minor melodic scale (two octaves)*

Musical notation for the C# minor melodic scale over two octaves. The scale is written in treble clef with a key signature of three sharps (F#, C#, G#). It consists of an ascending line of eighth notes and a descending line of eighth notes, ending with a whole note C#.

93 *C# minor arpeggio (two octaves)*

Musical notation for the C# minor arpeggio over two octaves. The scale is written in treble clef with a key signature of three sharps (F#, C#, G#). It consists of an ascending line of eighth notes and a descending line of eighth notes, ending with a whole note C#.

95 *E minor harmonic scale (two octaves)*

Musical notation for the E minor harmonic scale over two octaves. The scale is written in treble clef with a key signature of one sharp (F#). It consists of an ascending line of eighth notes and a descending line of eighth notes, ending with a whole note E.

99 *E minor melodic scale (two octaves)*

Musical notation for the E minor melodic scale over two octaves. The scale is written in treble clef with a key signature of one sharp (F#). It consists of an ascending line of eighth notes and a descending line of eighth notes, ending with a whole note E.

103 *E minor arpeggio (two octaves)*

Musical notation for the E minor arpeggio over two octaves. The scale is written in treble clef with a key signature of one sharp (F#). It consists of an ascending line of eighth notes and a descending line of eighth notes, ending with a whole note E.

105 *Eb minor harmonic scale (two octaves)*

Musical notation for the Eb minor harmonic scale over two octaves. The scale is written in treble clef with a key signature of three flats (Bb, Eb, Ab). It consists of an ascending line of eighth notes and a descending line of eighth notes, ending with a whole note Eb.

109 *Eb minor melodic scale (two octaves)*

Musical notation for the Eb minor melodic scale over two octaves. The scale is written in treble clef with a key signature of three flats (Bb, Eb, Ab). It consists of an ascending line of eighth notes and a descending line of eighth notes, ending with a whole note Eb.

113 *Eb minor arpeggio (two octaves)*

Musical notation for the Eb minor arpeggio over two octaves. The scale is written in treble clef with a key signature of three flats (Bb, Eb, Ab). It consists of an ascending line of eighth notes and a descending line of eighth notes, ending with a whole note Eb.

115 *G# minor harmonic scale (two octaves)*

Musical notation for the G# minor harmonic scale over two octaves. The scale is written in treble clef with a key signature of four sharps (F#, C#, G#, D#). It consists of an ascending line of eighth notes and a descending line of eighth notes, ending with a whole note G#.

G# minor melodic scale (two octaves)

119

G# minor arpeggio (two octaves)

123

Bb minor harmonic scale (two octaves)

125

Bb minor melodic scale (two octaves)

129

Bb minor arpeggio (two octaves)

133

A minor harmonic scale (two octaves)

135

A minor melodic scale (two octaves)

139

A minor arpeggio (two octaves)

143

G minor harmonic scale (two octaves)

145

G minor melodic scale (two octaves)

149

G minor arpeggio (two octaves)

153



F# minor harmonic scale (two octaves)

155



F# minor melodic scale (two octaves)

159



F# minor arpeggio (two octaves)

163



F minor harmonic scale (two octaves)

165



F minor melodic scale (two octaves)

169



F minor arpeggio (two octaves)

173



D minor harmonic scale (two octaves)

175



D minor melodic scale (two octaves)

179



D minor arpeggio (two octaves)

183



C minor harmonic scale (three octaves)

185



188



C minor melodic scale (three octaves)

191

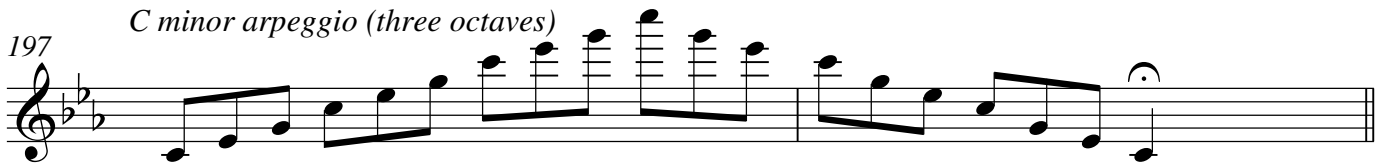


194



C minor arpeggio (three octaves)

197



Chromatic scale starting on D (two octaves)

199



202



Chromatic scale starting on C (three octaves)

206



210



213



Chromatic scale starting on C# (two octaves)

216



219



Chromatic scale starting on A (two octaves)

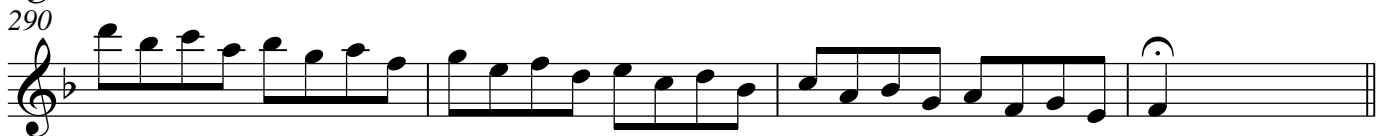
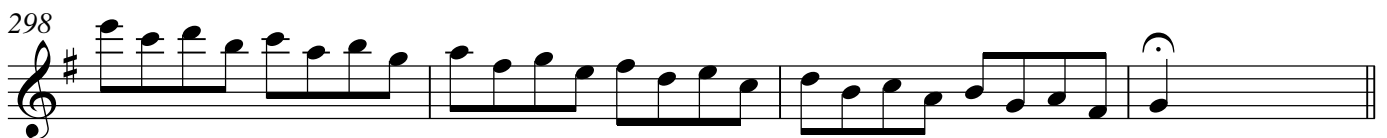
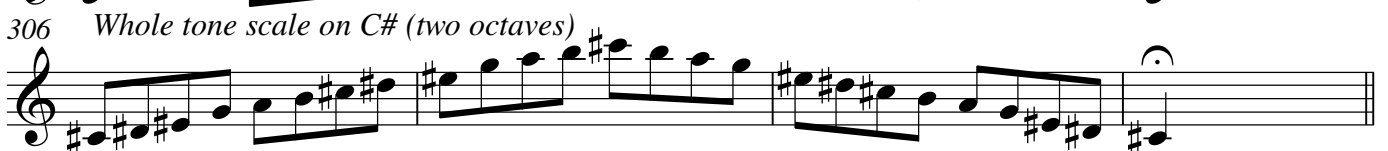
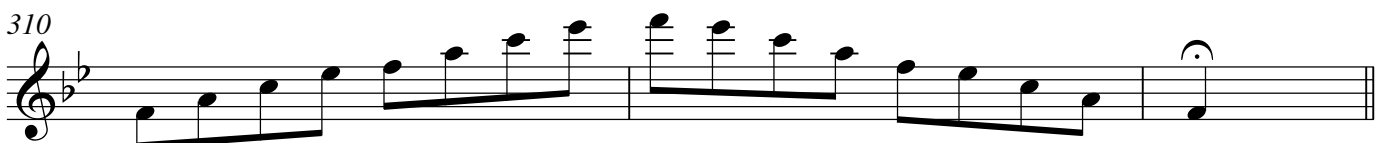
223





265 *Chromatic scale starting on Ab (two octaves)* 9



272 *Chromatic scale starting on Bb (two octaves)*279 *Chromatic scale starting on B (two octaves)*286 *Scale in thirds in F major (over two octaves)*294 *Scale in thirds in G major (over two octaves)*302 *Whole tone scale on C (two octaves)*306 *Whole tone scale on C# (two octaves)**Dominant seventh in the key of Bb (two octaves)**Dominant seventh in the key of Eb (two octaves)*

Dominant seventh in the key of C (two octaves)

316

Dominant seventh in the key of A (two octaves)

319

Dominant seventh in the key of F (three octaves)

322

Dominant seventh in the key of F# (two octaves)

326

Dominant seventh in the key of G (two octaves)

329

Dominant seventh in the key of Ab (two octaves)

332

Dominant seventh in the key of B (two octaves)

335

Dominant seventh in the key of Db (two octaves)

338

Dominant seventh in the key of D (two octaves)

341

Dominant seventh in the key of E (two octaves)

344

Diminished seventh starting on C# (two octaves)

347

12 *Diminished seventh starting on D (two octaves)*

350

Diminished seventh starting on D (two octaves)

Diminished seventh starting on C (three octaves)

353

Diminished seventh starting on C (three octaves)

Diminished seventh starting on Eb (two octaves)

357

Diminished seventh starting on Eb (two octaves)

Diminished seventh starting on F# (two octaves)

360

Diminished seventh starting on F# (two octaves)

Diminished seventh starting on A (two octaves)

363

Diminished seventh starting on A (two octaves)

Diminished seventh starting on E (two octaves)

366

Diminished seventh starting on E (two octaves)

Diminished seventh starting on G (two octaves)

369

Diminished seventh starting on G (two octaves)

Diminished seventh starting on Bb (two octaves)

372

Diminished seventh starting on Bb (two octaves)

Diminished seventh starting on B (two octaves)

375

Diminished seventh starting on B (two octaves)

Diminished seventh starting on F (two octaves)

378

Diminished seventh starting on F (two octaves)

Diminished seventh starting on G# (two octaves)

381

Diminished seventh starting on G# (two octaves)