

2018 onwards

ABRSM Grade 8 Saxophone Scales & Arpeggios

At grade 8, scales should be prepared to a minimum speed of ♩ = 132
and arpeggios to ♩. = 63 unless specified otherwise.

Legato tongued, staccato, and slurred articulations are required.

All scales & arpeggios should be known from memory.

At grade 8 BOTH harmonic AND melodic minors should be known.

B major scale (two octaves)



B major arpeggio (two octaves)



Bb major scale (2 1/2 octaves)



Bb major arpeggio (2 1/2 octaves)



Db major scale (two octaves)



Db major arpeggio (two octaves)

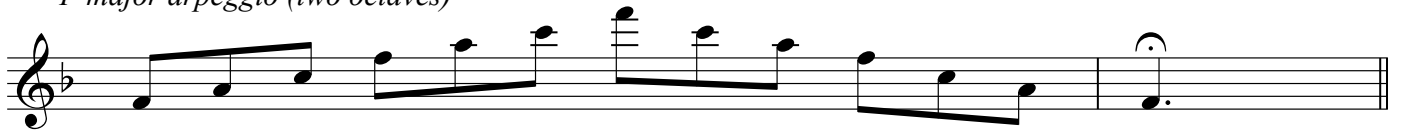
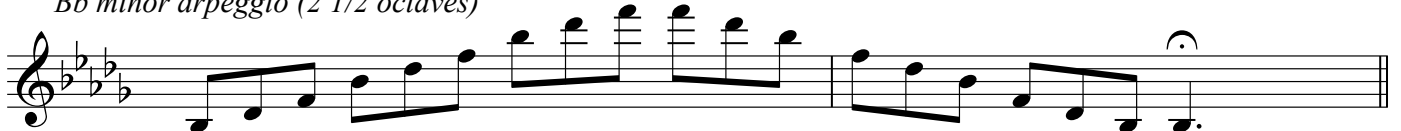
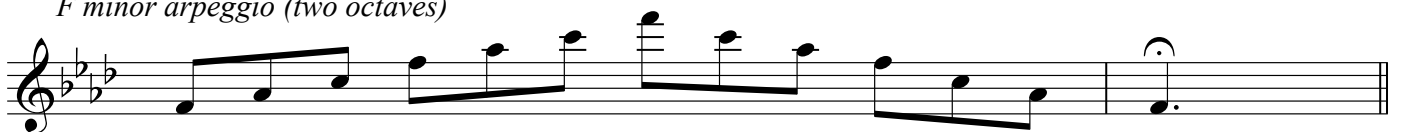


E major scale (two octaves)



E major arpeggio (two octaves)



F major scale (two octaves)*F major arpeggio (two octaves)**Ab major scale (extended)**Ab major arpeggio (extended) ♩ = 96**Bb minor harmonic scale (2 1/2 octaves)**Bb minor melodic scale (2 1/2 octaves)**Bb minor arpeggio (2 1/2 octaves)**F minor harmonic scale (two octaves)**F minor melodic scale (two octaves)**F minor arpeggio (two octaves)**A minor harmonic scale (extended)*

A minor arpeggio (extended) ♩ = 96*B minor harmonic scale (two octaves)**B minor melodic scale (two octaves)**B minor arpeggio (two octaves)**C# minor harmonic scale (two octaves)**C# minor melodic scale (two octaves)**C# minor arpeggio (two octaves)**E minor harmonic scale (two octaves)**E minor melodic scale (two octaves)**E minor arpeggio (two octaves)*

Chromatic scale starting on E (two octaves)
Chromatic scale starting on C# (two octaves)
Chromatic scale starting on F (two octaves)
Chromatic scale starting on B (two octaves)
Chromatic scale starting on Bb (2 1/2 octaves)
Dominant seventh in the key of Eb (2 1/2 octaves) ♩ = 96

Dominant seventh in the key of F# (two octaves) ♩ = 96



Dominant seventh in the key of E (two octaves) ♩ = 96



Dominant seventh in the key of A (two octaves) ♩ = 96



Dominant seventh in the key of Bb (two octaves) ♩ = 96



Diminished seventh starting on B (two octaves) ♩ = 96



Diminished seventh starting on Bb (2 1/2 octaves) ♩ = 96



Diminished seventh starting on C# (two octaves) ♩ = 96



Diminished seventh starting on D (two octaves) ♩ = 96



Diminished seventh starting on E (two octaves) ♩ = 96



Diminished seventh starting on F (two octaves) ♩ = 96



6 *Scale in thirds in C major (over two octaves)* ♩ = 120

Musical notation for Scale in thirds in C major (over two octaves). The first staff shows the ascending scale in eighth notes, and the second staff shows the descending scale in eighth notes, ending with a fermata on the final note.

Scale in thirds in Eb major (over two octaves) ♩ = 120

Musical notation for Scale in thirds in Eb major (over two octaves). The first staff shows the ascending scale in eighth notes, and the second staff shows the descending scale in eighth notes, ending with a fermata on the final note.

Whole tone scale on D (two octaves)

Musical notation for Whole tone scale on D (two octaves). The first staff shows the ascending scale in eighth notes, and the second staff shows the descending scale in eighth notes, ending with a fermata on the final note.

Whole tone scale on Eb (two octaves)

Musical notation for Whole tone scale on Eb (two octaves). The first staff shows the ascending scale in eighth notes, and the second staff shows the descending scale in eighth notes, ending with a fermata on the final note.