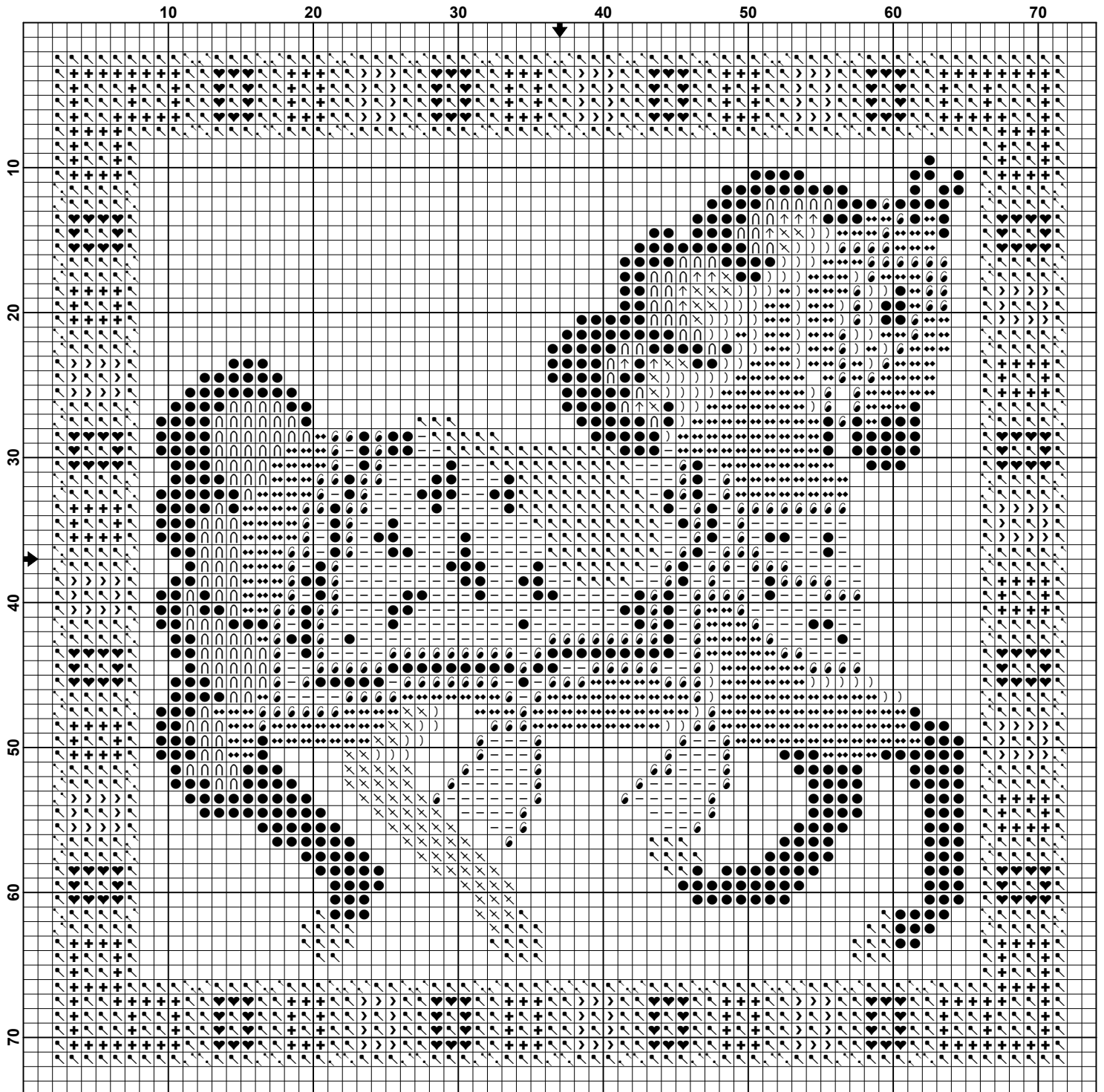


Carousel Horse Tile - Egyptian



Carousel Horse Tile - Egyptian

Pattern Name: Carousel Horse Tile - Egyptian
Designed By: Su Poole
Copyright: 2020
Fabric: Aida 14, Navy Blue
70w X 70h Stitches
Size: 14 Count, 12.70w X 12.70h cm

Floss Used for Full Stitches:

Symbol	Strands	Type	Number	Color
↑	2	Anchor	235	Charcoal Grey Med
∩	2	Anchor	236	Charcoal Grey DK
—	1	Anchor	305	Topaz LT
↖	2	Anchor	306	Topaz Med LT
)	2	Anchor	310	Topaz VY DK
×	2	Anchor	359	Coffee Med
●	2	Anchor	403	Black
◆	2	Anchor	1045	Toast LT
›	1	MH GS Bead	00020	Royal Blue
⦿	1	MH GS Bead	00557	Gold
♥	1	MH GS Bead	02013	Red Red
+	1	MH GS Bead	02055	Brilliant Green

Floss Used for Half Stitches:

Symbol	Strands	Type	Number	Color
↖	2	Anchor	306	Topaz Med LT

Notes:

Replace the yellow floss for metallic for more sparkle