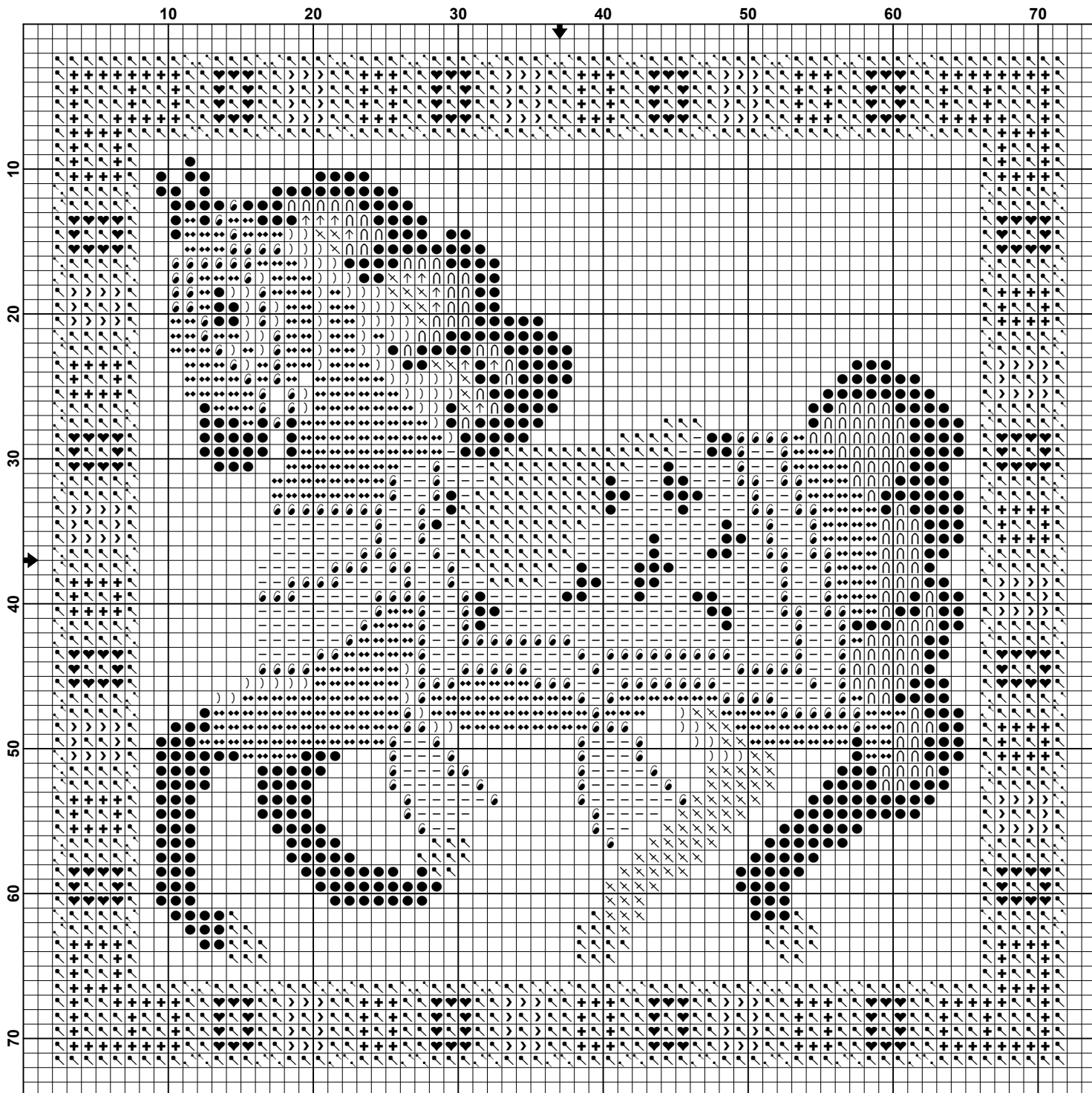


# Carousel Horse Tile - Egyptian



## Carousel Horse Tile - Egyptian

**Pattern Name:** Carousel Horse Tile - Egyptian  
**Designed By:** Su Poole  
**Copyright:** 2020  
**Fabric:** Aida 14, Zweigart Christmas Green  
70w X 70h Stitches  
**Size:** 14 Count, 12.70w X 12.70h cm

### Floss Used for Full Stitches:

| <b>Symbol</b> | <b>Strands</b> | <b>Type</b> | <b>Number</b> | <b>Color</b>      |
|---------------|----------------|-------------|---------------|-------------------|
| ●             | 2              | DMC         | 310           | Black             |
| ↑             | 2              | DMC         | 414           | Steel Gray-DK     |
| )             | 2              | DMC         | 434           | Brown-LT          |
| ◆◆            | 2              | DMC         | 436           | Tan               |
| ×             | 2              | DMC         | 801           | Coffee Brown-DK   |
| ∩             | 2              | DMC         | 3799          | Pewter Gray-VY DK |
| ↶             | 2              | DMC         | 3820          | Straw-DK          |
| -             | 1              | DMC         | 05 315        | Ant. Mauve -Vy Dk |
| ➤             | 1              | MH GS Bead  | 00020         | Royal Blue        |
| ⦿             | 1              | MH GS Bead  | 00557         | Gold              |
| ♥             | 1              | MH GS Bead  | 02013         | Red Red           |
| +             | 1              | MH GS Bead  | 02055         | Brilliant Green   |

### Floss Used for Half Stitches:

| <b>Symbol</b> | <b>Strands</b> | <b>Type</b> | <b>Number</b> | <b>Color</b> |
|---------------|----------------|-------------|---------------|--------------|
| ↶             | 2              | DMC         | 3820          | Straw-DK     |

### Notes:

Replace the yellow floss for metallic for more sparkle