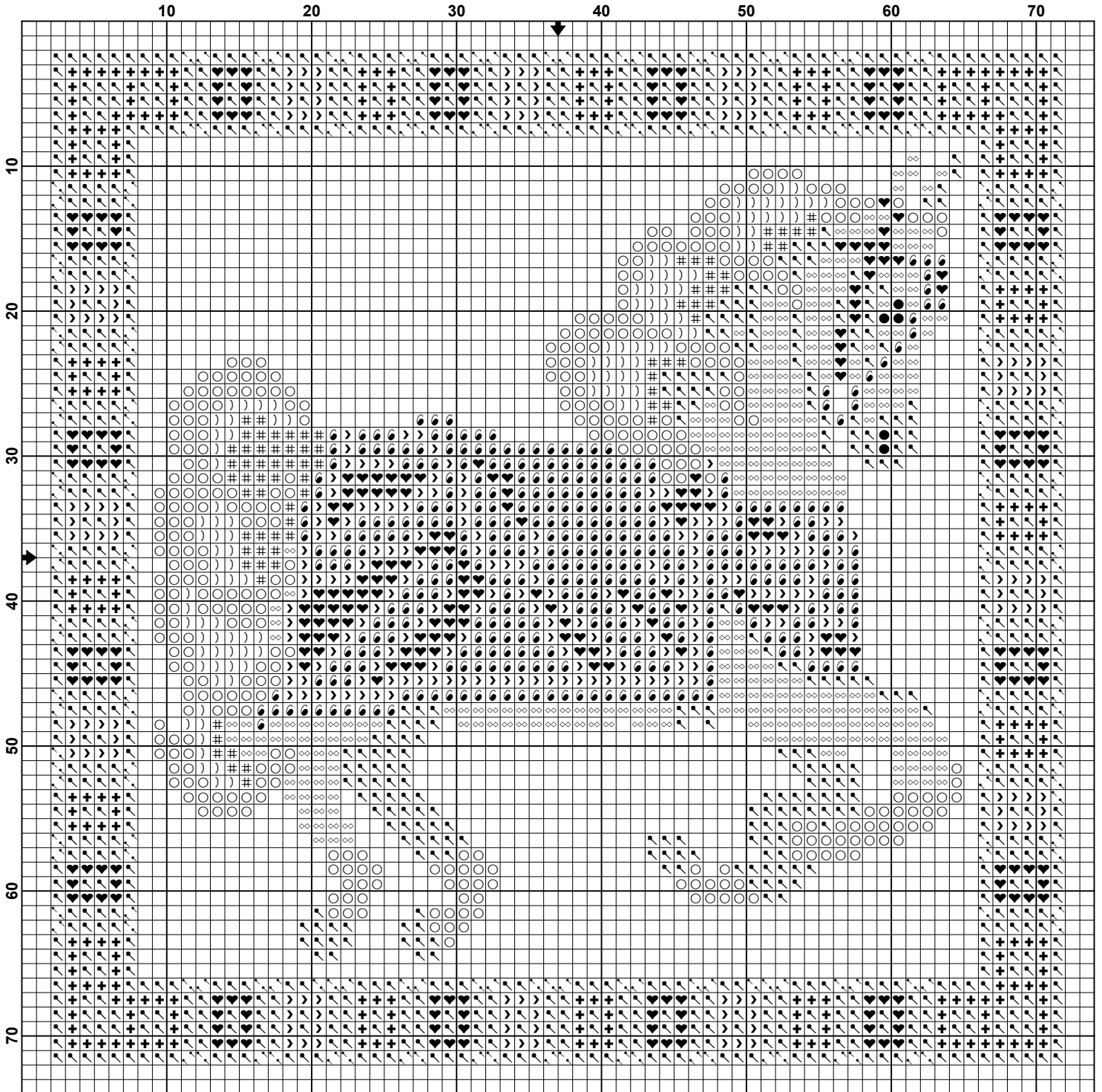


Tile - Carousel Horse - Palomino



Tile - Carousel Horse - Palomino

Pattern Name: Tile - Carousel Horse - Palomino
Designed By: Su Poole
Copyright: 2020
Fabric: Aida 14, Navy Blue
70w X 70h Stitches
Size: 14 Count, 12.70w X 12.70h cm

Floss Used for Full Stitches:

Symbol	Strands	Type	Number	Color
○	2	Anchor	2	White
)	2	Anchor	234	Charcoal Grey LT
#	2	Anchor	235	Charcoal Grey Med
↖	2	Anchor	306	Topaz Med LT
∞	2	Anchor	307	Topaz Med
●	2	Anchor	403	Black
›	1	MH GS Bead	00020	Royal Blue
6	1	MH GS Bead	00557	Gold
♥	1	MH GS Bead	02013	Red Red
+	1	MH GS Bead	02055	Brilliant Green

Floss Used for Half Stitches:

Symbol	Strands	Type	Number	Color
↖	2	Anchor	306	Topaz Med LT

Notes:

Replace the gold floss with gold metallic for extra shine