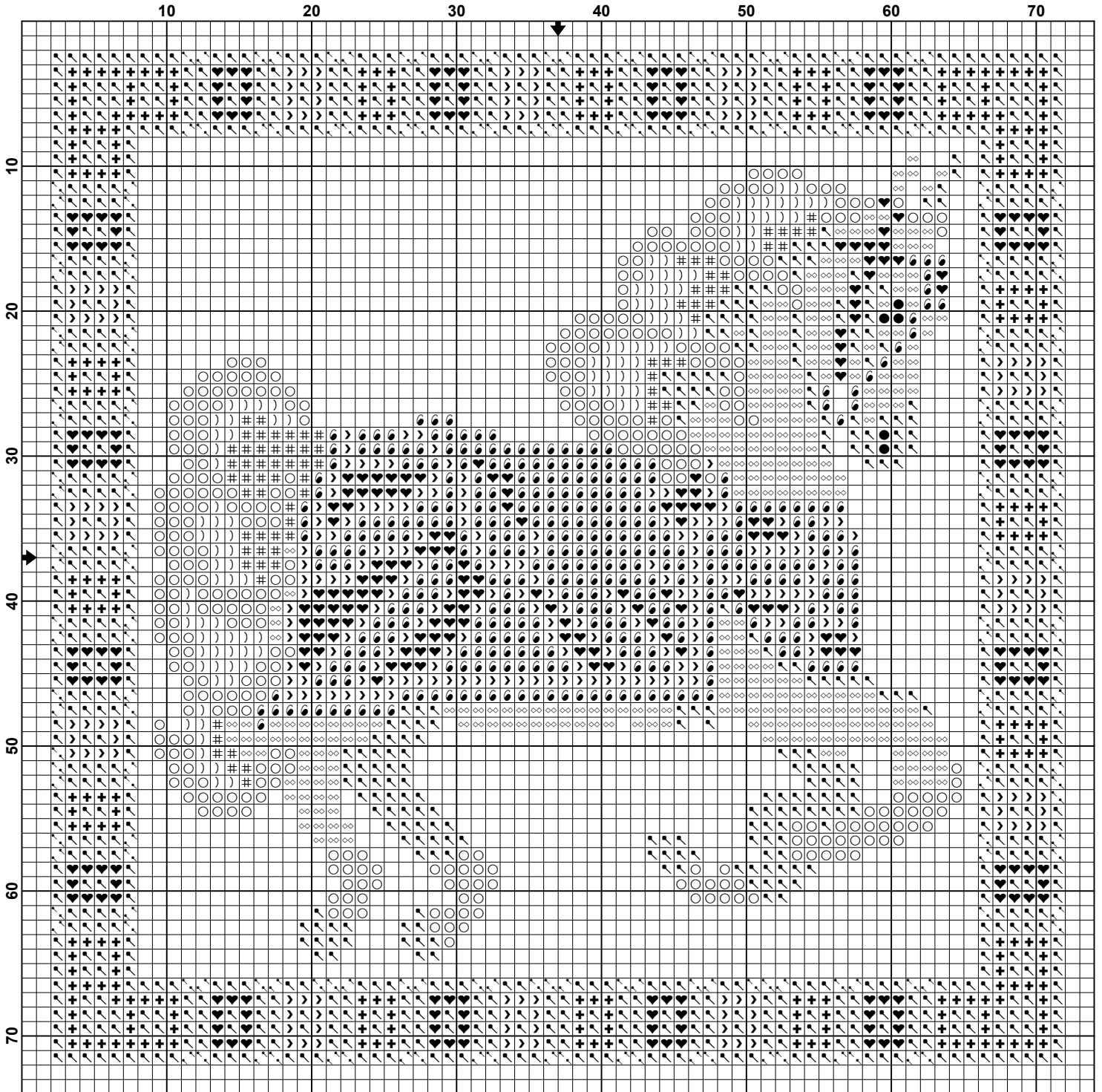


Tile - Carousel Horse - Palomino



## Tile - Carousel Horse - Palomino

**Pattern Name:** Tile - Carousel Horse - Palomino  
**Designed By:** Su Poole  
**Copyright:** 2020  
**Fabric:** Aida 14, Navy Blue  
70w X 70h Stitches  
**Size:** 14 Count, 12.70w X 12.70h cm

### Floss Used for Full Stitches:

<b>Symbol</b>	<b>Strands</b>	<b>Type</b>	<b>Number</b>	<b>Color</b>
●	2	DMC	310	Black
#	2	DMC	414	Steel Gray-DK
)	2	DMC	762	Pearl Gray-VY LT
◇	2	DMC	783	Topaz-MD
↶	2	DMC	3820	Straw-DK
○	2	DMC	White	White
➤	1	MH GS Bead	00020	Royal Blue
⑥	1	MH GS Bead	00557	Gold
♥	1	MH GS Bead	02013	Red Red
+	1	MH GS Bead	02055	Brilliant Green

### Floss Used for Half Stitches:

<b>Symbol</b>	<b>Strands</b>	<b>Type</b>	<b>Number</b>	<b>Color</b>
↶	2	DMC	3820	Straw-DK

### Notes:

Replace the gold floss with gold metallic for extra shine