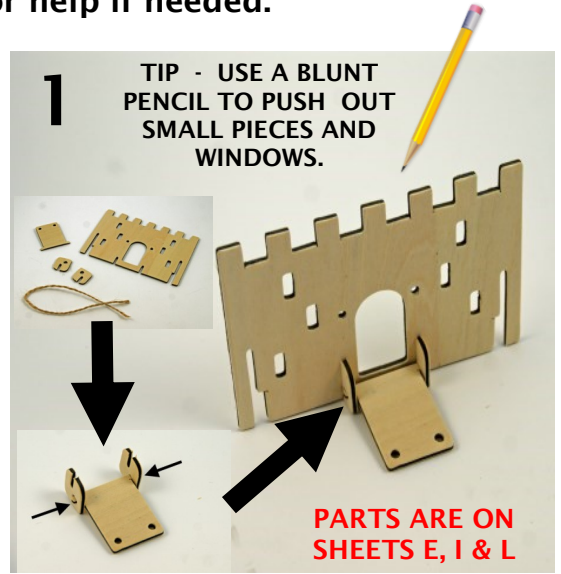
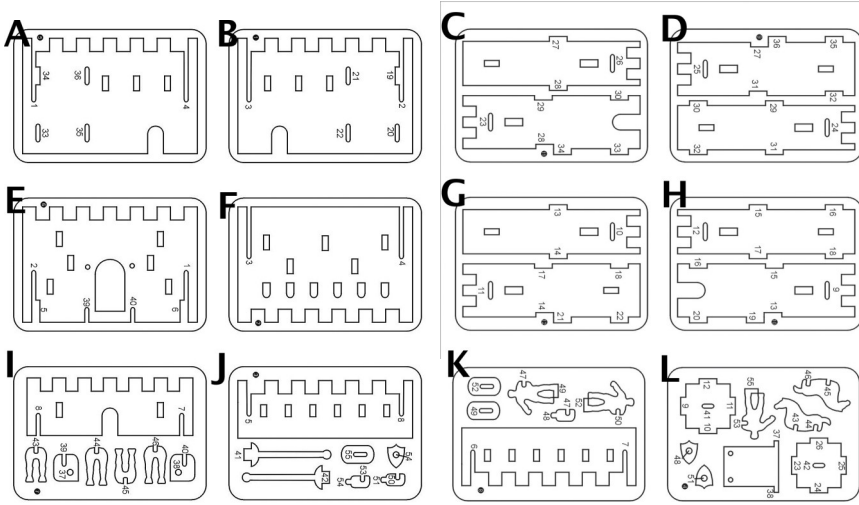




Castle in a Tin

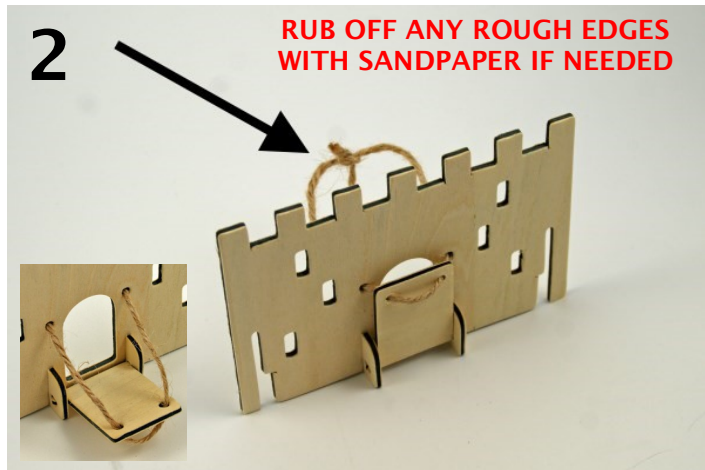


Now you can be the King of your own castle! Follow this step by step guide to make your own castle complete with a drawbridge, knights and horses. Ask an adult for help if needed.

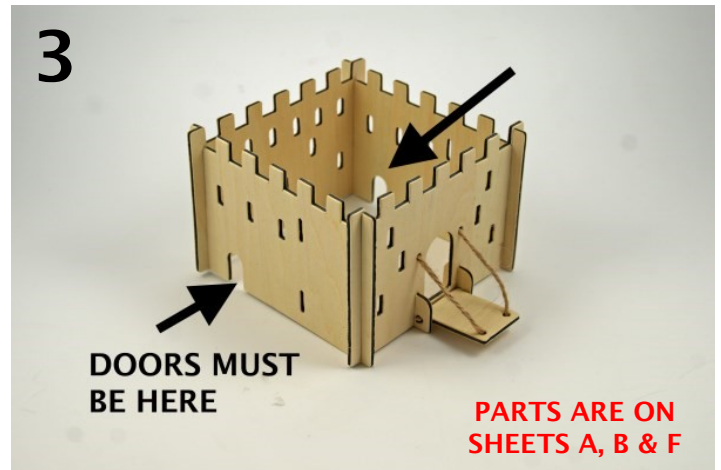


Remove the wooden sheets from the tin and lay them out in sequence from A to L.

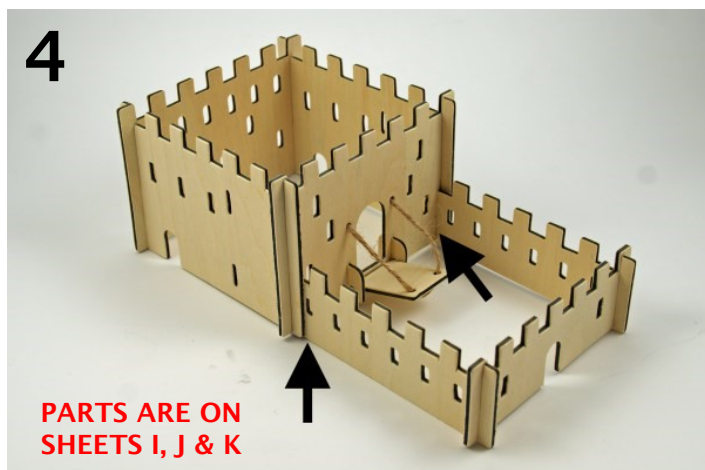
First build the front wall and drawbridge as shown above.



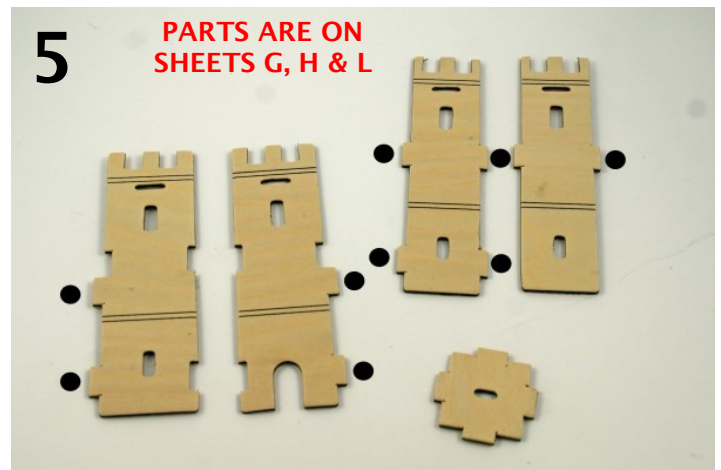
Pull the string through the holes in the drawbridge & wall & tie as shown here.



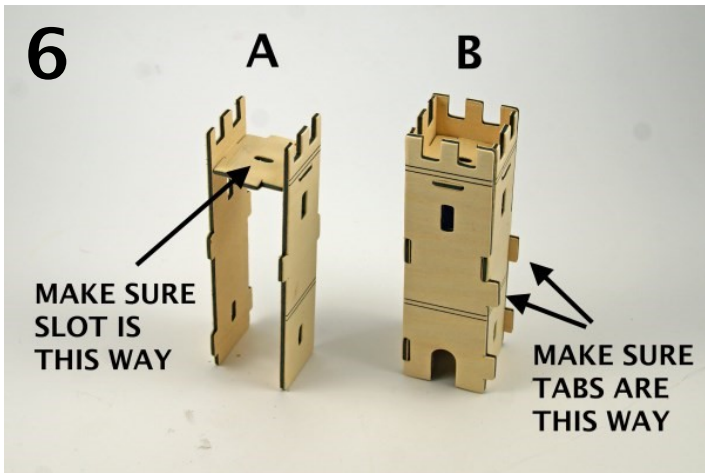
Join the 3 other main castle walls, make sure the doors are as shown above.



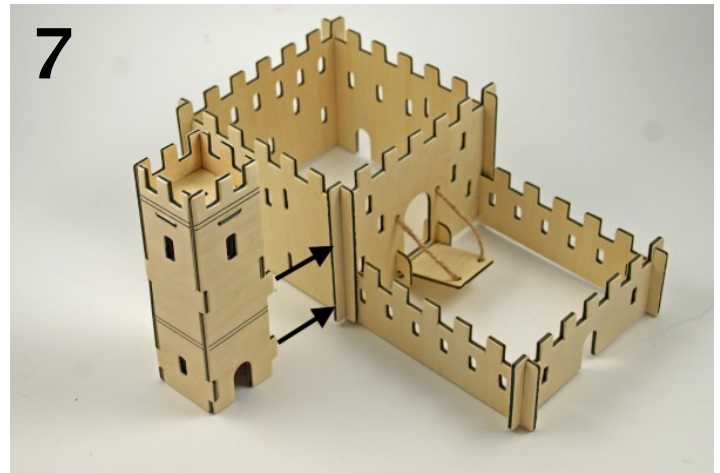
Now build the front courtyard and slot it to the main castle.



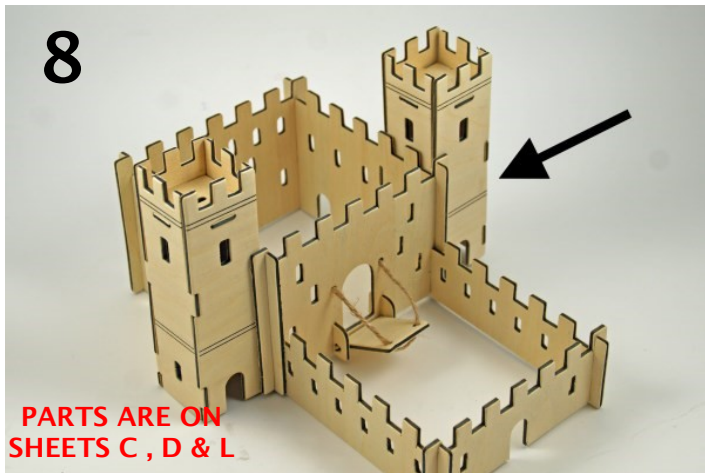
Find these parts, make sure they have tabs where shown (see black spots).



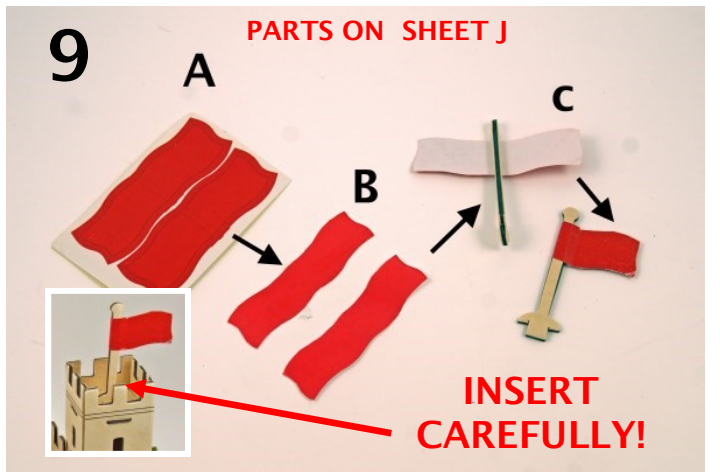
Build the first tower in 2 stages. Look at these pictures carefully, the door goes on the front, and the tabs point right.



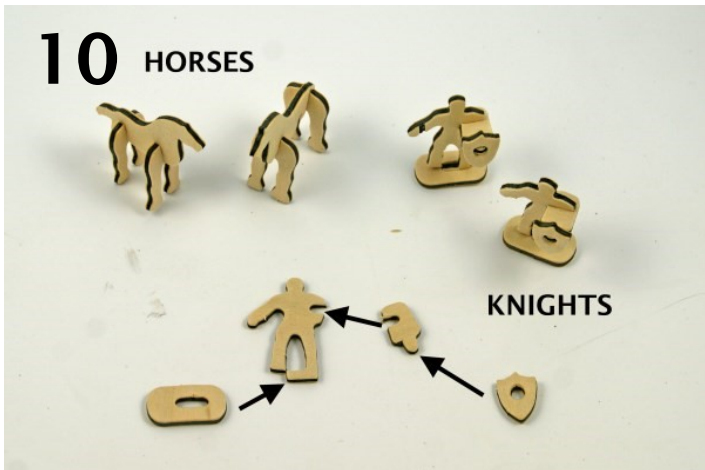
The tower joins to the castle with the 4 tabs like this...



Now build the second tower and join it to the castle.



Peel the sticky flags and wrap them around the flag poles, insert them into the towers.



Use the remaining pieces to make 2 horses and 3 knights.



Place the castle onto the mat and you are ready for medieval adventures & battles!!

We've included some special stickers to help you decorate your castle and tin. After playing your castle can be dismantled and stored inside the tin.

Produced by Apples to Pears Ltd., Stroud, U.K.

www.applestopears.com

PLEASE KEEP THESE INSTRUCTIONS FOR FUTURE REFERENCE

Copyright © Apples to Pears Ltd 2014. RECOMMENDED AGE 8+

apples 
to pears



WARNING CHOKING HAZARD Small parts, not suitable for children under 3 yrs.