



## Free Standing Blind Installation Instructions – Part 2



Fit the 3 number 4x2 floor bearers to the hangers and screw fix to secure using 30mm screws provided.

Ensure the bearers are installed with the long edge of the bearer downwards- angle cut to accommodate side sloping inwards.

48 x 30mm screws needed.





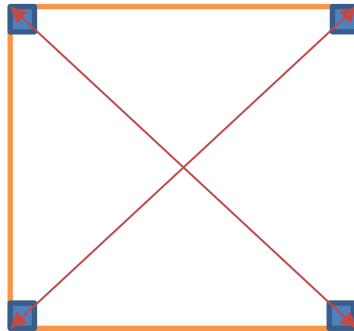
## Free Standing Blind Installation Instructions – Part 2



Remove the temporary 3.0m long 38x63mm diagonal brace fitted to aid lifting the blind to upright.

Measure the diagonals at base level to ensure the 4 support frame legs are square with 90° corners- or as good possible with your ground conditions

When both diagonals measurements are equal the 4 legs will be square.



Evenly space out the 9 number 1.8m long 6x1 floor boards and fix down with 2 x 70mm screws at each floor bearer location

54 x 70mm screws needed.





## Free Standing Blind Installation Instructions – Part 2



Fit the 2 number approx. 3.0m long 38x63mm bottom diagonal braces – note; one above bottom rails of front and back panel bottom 4x2 rails and one below. Use 2 x 100mm screws at each end of the braces to secure to the bottom rails of the front and back panels. Fit 4x4 brace support block at intersection of bottom diagonal braces using 2 x 100mm screws from above and 2 x 100mm screws from below.

8 x 100mm screws needed







## Free Standing Blind Installation Instructions – Part 2



Fit the 2 number approx. 2.7m long 38x63mm side diagonal braces- ensure the braces are fitted apposing each other. Fitted on the inside of the support legs.

Use 2 x 100mm screws at each end of the braces to secure to the front and back main support legs.

4 x 100mm screws needed



Cut off all overhanging brace timbers





## Free Standing Blind Installation Instructions – Part 2



Carefully lift roof panel onto top of blind





## Free Standing Blind Installation Instructions – Part 2

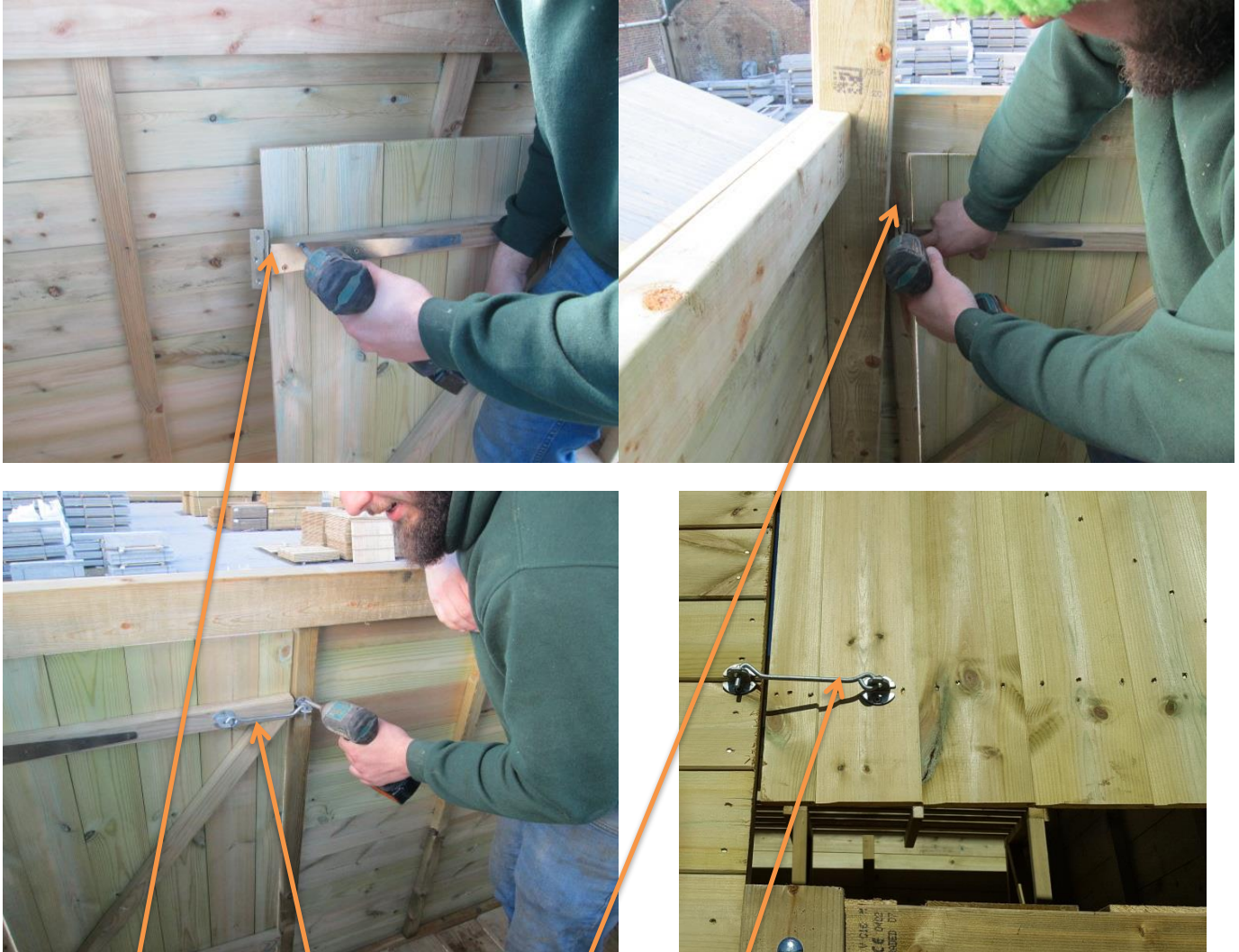


Ensure soffit boards are fitted at the sides not front and back- Square up roof before fixing down. Fix the roof panel to the blind framework using 2 x 70mm screw at each of the 6 roof purlin joint locations.

12 x 70mm screws needed



## Free Standing Blind Installation Instructions – Part 2



Fix the 2 x Tee hinges to the back of the blind door using 30mm screws.

Fix the blind door hinges to the front section main frame using 30mm screws.

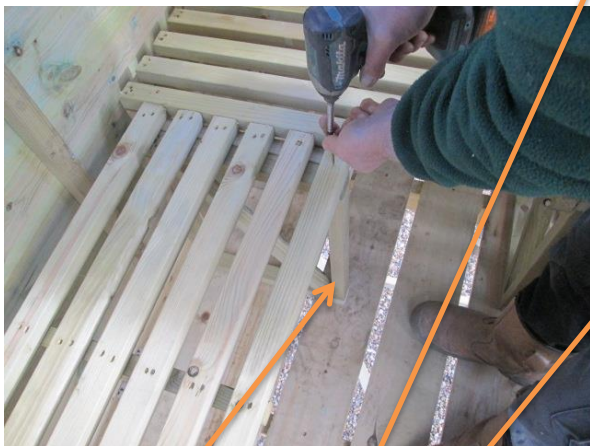
Fix cabin hook to inside of door and outside of door using 30mm screws- external cabin hook is fitted at the bottom of the door to make opening from the outside easier

22 x 30mm screws needed





## Free Standing Blind Installation Instructions – Part 2



Evenly space out the 3 x long seat support frames, fit long seat to support legs and screw down to seat support frames using 2 x 70mm screws for each seat support- pre drill holes using a 3mm drill bit prior to screwing to save splitting timber.

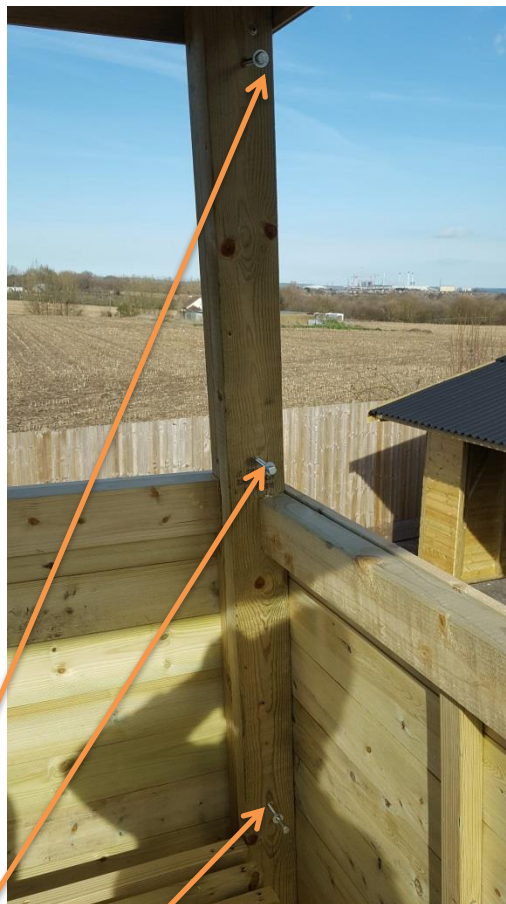
Evenly space out the 2 x short seat support frames, fit short seat to support legs and screw down to seat support frames using 2 x 70mm screws for each seat support- pre drill holes using a 3mm drill bit prior to screwing to save splitting timber.

From beneath the floor boards fix the support frame legs through the floor boards using 70mm screws- 2 x screws for each base timber for each seat support. Make sure you screw through the frame base and up into the frame support leg or the screw will be seen.





## Free Standing Blind Installation Instructions – Part 2



Pre-drill 6mm holes at the top middle and bottom (just above seat) of the 4 corners inside the blind and install M8 x 70mm coach screws and washers to secure the side panels to the front and back panels



## Free Standing Blind Installation Instructions – Part 2



Free standing blind completed. For added security we recommend the 4 blind support legs are fixed down using 75mm (3") posts driven into the ground for 600mm and coach bolted or screwed through the posts into the framework.





## Free Standing Blind Installation Instructions – Part 2

### MATERIALS LIST

- 1 X FRONT LONG PANEL SECTION- DOOR SECTION
- 1 X BACK LONG PANEL SECTION
- 2 X SHORT SIDE PANEL SECTIONS
- 2 X APPROX. 2.7m LONG DIAGONAL BRACES
- 2 X APPROX. 3.0m LONG DIAGONAL BRACES
- 1 X 4X4 DIAGONAL SUPPORT BRACE BLOCK.
- 3 X 4X2 FLOOR JOISTS
- 1 X ROOF PANEL
- 1 X LADDER
- 9 X 1.8m FLOOR BOARDS
- 1 X DOOR
- 5 SEAT FRAME SUPPORTS
- 1 X LONG SEAT
- 1 X SHORT SEAT
- 2 X 12" TEE HINGES
- 2 X CABIN HOOKS
- 6 x HANGER SUPPORTS
- 1 BOX x NO. 4 X 30mm SCREWS
- 1 BOX x NO. 4 X 70mm SCREWS
- 1 BOX x NO. 5 X 100mm SCREWS
- 4 x M10 x 110mm Coach bolts, nuts and washers
- 12 x M8 x 70mm Coach screws & washers



## Free Standing Blind Installation Instructions – Part 2

### INSTALL TOOLS REQUIRED

POSI DRIVE NO. 2 SCREW DRIVER

13mm & 17mm SOCKETS OR SPANNERS

3mm, 6mm & 10mm wood drill bits.

HAMMER

TAPE MEASURE

LEVEL

HAND SAW

**HAYMAC ACCEPT NO RESPONSIBILITY FOR PERSONAL INJURY OR DAMAGE TO PROPERTY  
DURING CUSTOMER SELF INSTALLATION OR USE OF THIS HIGH SEAT / BLIND.**

**IT IS THE RESPONSIBILITY OF THE INSTALLER TO ENSURE CORRECT MANUAL  
HANDLING TECHNIQUES AND APPROPRIATE RISK ASSESSMENTS ARE  
EMPLOYED DURING THE INSTALLATION OF THIS HIGH SEAT / BLIND. THIS  
INSTALLATION INSTRUCTION IS TO BE USED AS A GUIDE TO INSTALL ONLY.**