



## ISSUE 11 WINTER-SPING 2016-2017

### A LOT HAS HAPPENED OVER THE LAST FEW YEARS.



Firstly I must apologize to everyone for the lack of communication over the last few years with newsletters and animal sponsorships.

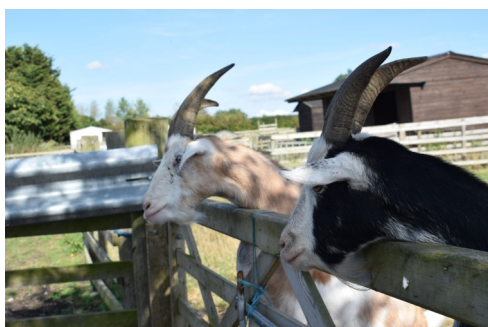
Being a family run sanctuary it is difficult especially during the winter months to keep on top of everything office related, so office work is always on top of us.

We aim to get back on track and keep you updated three times this year. We now have a purpose built office so we can now endeavor to keep everything up to date efficiently.

Please let us know if you wish to unsubscribe from our supporters list.

Thank you for your continued support and we hope you enjoy receiving our new issue.

Rosie Richardson



### OPEN DAY 7TH MAY 2017

It starts at 11 am and finishes at 4 pm. Please check our website for details.

£1 admission (accompanied children free)

Dogs welcome on a lead.

If anyone can donate or give their time to helping on the day please get in touch as soon as possible. We need items that we can sell in our garage sale (shop) and prizes for our tombola. We also need people to spread the word about the day and put up posters in their local area.

If anyone can make vegan cakes it would be greatly appreciated.

We hope to see you there and lets keep our fingers crossed for the weather!

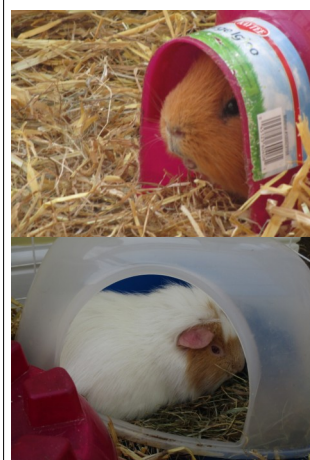
If it was not for the generosity of our supporters we could not continue our invaluable work and animals such as Mark and his brother Luke would be dead instead of living happily with their family.



# THANK YOU



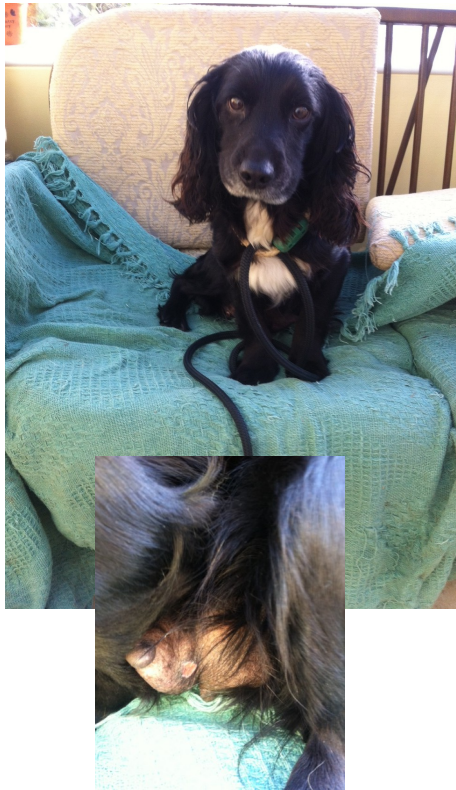
**Can you offer these brothers a home?**



### INSIDE THIS ISSUE:

MOLLY SAVED	2
LAND APPEAL	3
SPONSORSHIP	4
THANK YOUS	4

## MOLLY RESCUED



Molly when she first arrived.

She was so skinny that you could get your finger and thumb around her waist.

Molly was found running along the a45 near Northampton terrified, hungry and wet.

On arrival she was so scared that she would not enter the house, it was obvious that she had never been in one and had been clearly used as a breeding machine ,from the huge lumps hanging from her stomach.

It was evident that Molly has seen nothing but abuse in her life and never had a kind hand until now.

After a check up at the vets it was explained to us that Molly needed an operation as soon as possible to remove a mammary gland tumor that could be spreading to her lungs and organs.

Molly was not able to have the operation straight away due to her poor condition.

Two months later Molly is a different dog. She loves to hide your shoes just as you are leaving the house, she loves to snuggle on the settee at night. She loves George our rescued fox hound and follows him everywhere, she even copies his naughty habits. She is now at a healthy weight and is booked in for her operation on 3rd march.

We have now raised £450 needed for Mollys potential life saving operation. Thank you to all of our supporters for making this possible.

Let us pray that Molly's operation is a success and this sweet special girl can continue to enjoy a life of love.

Molly is now loving her new life of love and kindness.





## ANIMAL SPONSORSHIP

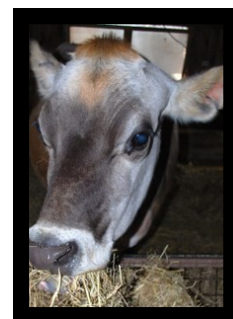


ANIMAL  
SPONSORSHIP  
PACKS PROVIDE  
AN  
OPPORTUNITY  
TO CARE FOR  
AN ANIMAL OF  
YOUR CHOICE  
WITHOUT THE  
PHYSICAL  
RESPONSIBILITY  
AT YOUR OWN  
HOME.

AT BROOK FARM ANIMAL SANCTUARY WE HAVE A NON-DESTRUCT POLICY EXCEPT ON VETERINARY ADVICE AND WHERE ALL ELSE HAS FAILED. IN SOME INSTANCES, WHERE THE ANIMALS HAVE SPECIAL NEEDS, VERY OLD, OR HAVE PERSONALITY DISORDERS, WE GUARANTEE THEM CARE AND PROTECTION, AS WELL AS A HOME WITH US FOR THE REMAINDER OF THEIR LIVES.

WE RECEIVE NO SECURE FUNDING, AND ANY FORM OF PUBLIC DONATIONS IS ESSENTIAL TO ENSURE THE VIABILITY OF THE SANCTUARY. HENCE, WE ASK FOR PEOPLE TO CONSIDER SPONSORING AN ANIMAL (S) OR AN AREA OF BFAS TO CONTRIBUTE TOWARDS THE WELL BEING OF THESE ANIMALS.

PLEASE CONTACT US IF YOU ARE INTERESTED IN SPONSORING ONE OR MORE OF OUR WONDERFUL ANIMALS.



### THINGS WE ALWAYS NEED

- Foster Homes
- Donations
- Monthly standing orders to ensure the viability of the sanctuary
- Mucking out tools
- Wheel barrels
- Forks
- Pig Arks
- Saleable items
- Animal Feed
- Bedding (old duvets, pillows, sheets, etc)

### THANK YOU

- To all of our supporters we could not continue our work without you
- All of our hard working volunteers.
- John Hackney who kindly prints our newsletters.  
[www.copyprintdepot.co.uk](http://www.copyprintdepot.co.uk)
- Milton Keynes open university for their amazing donation of hay
- Whitworths for all of the pig food they kindly donate
- Amir our vet and Towcester vets for their support.

**WWW.BROOK-FARM.ORG.UK**

**Registered charity 112664**

**07758728265**

**[Sanctuary@brook-farm.org.uk](mailto:Sanctuary@brook-farm.org.uk)**

**Brook Farm Animal Sanctuary, Brooks Road, Raunds, Northants NN9 6NS**

## LAND APPEAL

At present we have over 300 animals on our sanctuary, but desperately need more land to benefit our current rescued animals and to allow us to save more that are in desperate need of our help.

We have the amazing opportunity to purchase an additional 3 acres of land next door to our sanctuary. Not only will it make an enormous difference to our current animals, most of which were saved from dire situations, but also to the many more animals out there that may need our help. We are urgently appealing for funds to help secure this additional 3 acres and give other animals the chance of a happy life.



Ponies like Millie who was left for years with laminitis before coming to the sanctuary would benefit from the hard standing area in the field.

Laminitic or diabetic ponies like Topsy that need restricted grazing in the spring could have more space, and a better quality of life in their own fenced off area. Our animals could have more grazing and it would allow us to rescue more animals that need a rescue space.

The over grown area in front of the field could be cleared and make an excellent goat area . Allowing us to rescue more sheep and goats.

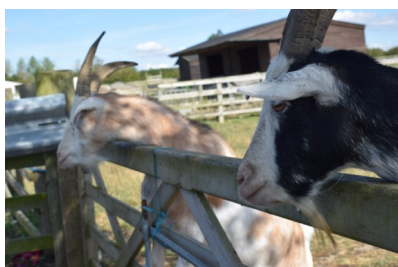
Please help us ensure the sanctuaries future and continue to rescue more animals that may need our help in the future.

You can donate as little as £3 per month or a one off donation.

You can donate through our website, send a cheque made payable to brook farm animal sanctuary, bank transfer or a standing order.

Every little helps and is greatly appreciated.

Our target is £30,000 so far we have raised £1600 thanks to the generosity of our supporters.



## HELP US TO HELP MORE ANIMAL S IN NEED OF OUR HELP

