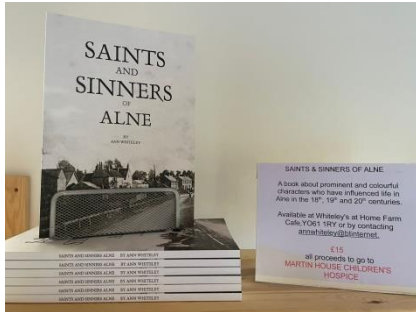


## Website News Archive : 2024

04-Jan-2024: 2.95 metres above normal is the highest reading so far on the depth gauge, installed in the river in December-2021.



Ann Whiteley's father (whose own grandfather lived in Fairhaven, Main Street) was a great story-teller who enjoyed relating tales of the 'goings on' in Alne in the early 20th century and even more so when Ann married farmer David Whiteley and came to live at Home Farm in Alne. Ann's interest in the local history was born and over a period of sixty years she has collected



photographs and information about the village and its inhabitants.

Saints & Sinners is a cornucopia of colourful characters who have lived in Alne in the 18th, 19th and 20th centuries together with a smattering of local history to give the background to their circumstances and perhaps to explain to a certain extent their behaviour. Buy it in Whiteley's cafe, details in the photo.

08-Jan-2024 ALNE PARISH LEISURE ASSOCIATION. RENOVATION of the Multi Use Games Area (MUGA). REQUESTS FOR QUOTATIONS FOR WORK

The APLA Trustees intend to embark on a major project to renovate the existing MUGA which is situated within our Recreation Ground. The work is subject to our receipt of grant aided funds and a decision is expected by April 2024. In anticipation of this grant the Trustees are inviting interested parties to bid for the work which will consist of the following elements

The removal of the existing fencing and boards and their safe disposal offsite  
The construction of a new Rebound Rigid Weldmesh Panel Fence System (with bounceback) on the original site  
The renovation of the existing surface through cleaning, repainting and relining.

Details regarding the work of APLA, the Alne Recreation Ground and the different renovation projects that are envisaged can be found on the Alne Village Web Site [www.alnevillage.co.uk](http://www.alnevillage.co.uk)

Further details of the proposed works and the timescales involved can be obtained by contacting: Ian McCrae, Projects Coordinator. 07703 400040 or [mccrae500@yahoo.co.uk](mailto:mccrae500@yahoo.co.uk)

Initial expressions of interest should be received by February 8th 2024

23-Jan-2024: The end of March is the final final last chance to add your historical information to the 2024 edition of Alne Annals. Do you have a postcard or photo collection which Robert could look at and see if there are new views and/or insights which could be used. Or interesting histories of your grandparents or house in Alne? If so, please contact Robert on 07724-185661 or [brech28@btinternet.com](mailto:brech28@btinternet.com)

23-Jan-2024: It looks like we will be into March before Aldwark Bridge reopens. And the recent floods have saturated the ground at the site of the new footbridge over the Kyle and there will be an inevitable delay to this as well.

06-Feb-2024: [Click here to read the February Parish Newsletter \(in full colour!\)](#)

16-Feb-2024: The Annual Alne litterpick will take place on Saturday 16-March promptly at 10:00am at the Village Hall. Having no coronation this year, we can move back to the traditional March date when the verges are still clear of new growth and the litter more readily visible. Please come along and take part in this fun community event. Kit will be provided but maybe bring your own gloves.

17-Feb-2024: Aldwark Bridge has reopened today. Traffic lights are allegedly expected in May. No further news on the Kyle footbridge - wait for the water level to subside!

23-Feb-2024: Alne Recreation Ground – Update

There has been quite a lot of progress since the APLA Trustees embarked on a programme of remedial work and Project-focussed innovations for the Recreation Ground.

Repairs and renewals within the Play Area are nearly complete. The Zip-Wire has been repaired and a new safety mat under the Carousel has been fitted. A new BEE springer is there for the younger children and new tyres on the trim trail for older ones. The See-Saw has two new seats and the Willow Tree area has been made into a secret hideaway. We have yet to replace the Wind Chimes but a generous grant from the Pearson Trust has helped us on our way and we expect to have a quite exciting new feature within the next two months. All the woodwork still needs painting and we will be starting that process with a painting party scheduled for Saturday March 9th. If you are interested in joining in then please contact Debbie Bell ( [debbiebell58@gmail.com](mailto:debbiebell58@gmail.com) ) or Hannah Pilling ( [hannah.parmley@gmail.com](mailto:hannah.parmley@gmail.com) ).

The football group have agreed a suitable size and location for a Junior Football Pitch and we will shortly be arranging a ground levelling and then purchasing new mini goalposts and nets.

The rabbit fencing has been repaired and the Orchard Area has been given a facelift by a professional tree surgeon. 600 bluebells have been planted (thank-you 1st Kyle Scout Troop) and fingers crossed for a show this April. If you have not been to the Orchard lately it is well worth a visit – although of course still a work in progress.

The new but currently marooned container has been purchased and we hope to have it in its final resting place by April when the ground is firmer. About £16,000 has been spent so far on items prioritised as essential or desirable with perhaps a further £5,000 to go. This money comes entirely from the profits made by the annual Street Fayre so supporting this brings direct benefit to residents of Alne and the surrounding parishes.

Turning to the bigger projects. We are fortunate to have received a grant of £20,000 from the National Lottery towards the cost of a Space Net for the Play Area. Because we chose a 5-metre-high structure we have had to obtain planning permission and that has introduced a slight delay. However, we will shortly be in a position to confirm a supply and installation contract for £27,000 with the balance coming from APLA funds. With a fair wind we hope to have the Space Net up before the day of the Street Fayre.

We have already received £10,000 from the Friends of St Monica's towards the costs of the Access Trail project. The outcome of a bid from the Rural Capital Fund (Levelling up) will come shortly and we are hopeful of success. If so, that should make the Trail project viable.

Finally, we have a bid in to the FCC Communities Fund for a substantial sum to support a complete refurbishment of the Multi-use Games Area (MUGA). We do not expect a response from them until April as they do not meet until mid-March.

If you have any questions, comments or concerns about the above please contact Ian McCrae who can be found at [mccrae500@yahoo.co.uk](mailto:mccrae500@yahoo.co.uk)

05-Mar-2024 [Click here to read the March Parish Newsletter \(in full colour!\)](#)

- 05-Mar-2024: Reminder that the end of March is the final final last chance to add your historical information to the 2024 edition of Alne Annals. Do you have a postcard or photo collection which Robert could look at and see if there are new views and/or insights which could be used. Or interesting histories of your grandparents or house in Alne? If so, please contact Robert on 07724-185661 or brech28@btinternet.com
- 05-Mar-2024: Reminder that the Annual Alne litterpick will take place on Saturday 16-March promptly at 10:00am at the Village Hall. Having no coronation this year, we can move back to the traditional March date when the verges are still clear of new growth and the litter more readily visible. Please come along and take part in this fun community event. Kit will be provided but maybe bring your own gloves.
- 17-Mar-2024 Junior tennis coaching is available in Alne again this Easter holidays. It is at Alne on Monday 25-March. See the poster alongside [not repeated in the archive] and contact Hannah for further information on hannah.parmley@gmail.com
- 29-Mar-2024: 1 Post Office Cottages is up for sale. Alne Post Office was located here from 1943 to 2005 and it is still the location of the village post box. The estate agents tell us that it is up to the new owners to decide whether they want to keep the post box in situ (as it has been since 1943). If not, the Post Office is responsible for finding a new location.

#### 11-April-2024: Alne Recreation Ground – Access Path

The APLA Trustees are really pleased to be able to announce that they have now secured sufficient funding to make the long-proposed Access Path in the Recreation Ground a reality. Grants from The Friends of St. Monica's (£10,000) and from North Yorkshire Sport (funded by the UK Shared Prosperity Fund through North Yorkshire Council) (£20,000), will be supplemented by a contribution from APLA Funds. As a consequence, we have been able to appoint a contractor who should be able to start work in the summer. With good weather and a fair wind, we expect to have a path up and running before the Autumn.

The project will involve a 1.5-metre-wide stone path (similar to the one at Millfield in Easingwold) that runs around the perimeter of the field. It will pass through and around the Orchard Area. In addition, a link path from the car park entrance will join the path and go across to the Tennis Courts and the MUGA. The result will be to open up the whole of the Recreation Ground to groups and individuals for whom access is currently impossible. A distance of around 700 metres will be available to wheelchair users, prams & pushchairs, runners and casual strollers. We anticipate that this will invigorate enjoyment of the Orchard Area in particular.

We are hoping that the new pathways together with easier access will encourage increased use by our two local Care Home residents and by the children attending Outwood Primary Academy Alne.

We will install a new accessible gate at the entrance, courtesy of a generous donation from the Pearson Trust. Together with a new large hard standing area this will facilitate easy entrance from the car park for prams and wheelchairs in particular.

Finally, we intend to create flagged or concrete pads to allow for the fixing of benches around the Access Trail. Initially we plan to install 4 pads and we will shortly invite residents to sponsor one or more benches maybe as a memorial to a loved one.

We are extremely grateful to all three of the agencies who have made this project possible and to the many local residents who have contributed to the planning process.

If anyone would like more details of the scheme, or just have a question, then contact Ian McCrae who can be found at mccrae500@yahoo.co.uk

11-Apr-2024: Click here to see the April Parish Newsletter (in full colour!)

02-May-2024: Click here to see the May Parish Newsletter (in full colour!)

02-May-2024: The significant sinkage in Main Street has been reported to all of Highways, Yorkshire Water and today to the police. We were assured that Highways would be on site today but we haven't seen them yet!

10-May-2024 The *aurora borealis* in Alone. Photos courtesy of Steve Gilholm.

02-July-2024: Click here to see the July Parish Newsletter (in full colour!) A new vicar is announced!

13-Jul-2024: **Village Hall Clock Restoration:** For some months now, time has stood still as the public clock at Alne Village Hall has stopped.

The clock has been part of Alne's history dating back to the 1890s. It is a unique double-faced clock (faces on both the inside and outside of the hall) and was installed by the esteemed York clock maker G.J.F. Newey. The mechanism that drives the Village Hall clock was almost certainly made by the famous York-based scientific instrument maker Cooke, Troughton and Simms. The clock is a great asset to the village of Alne. It is a connection to Greenwich and to the important advances in scientific knowledge that took place in Victorian and Edwardian-era York.

The cost of the necessary specialist repairs is £4,000. Two generous grants of £1,000 each from Alne Parish Council and North Yorkshire Council's Locality Fund have covered half the cost so we have a target of a further £2,000 to meet the rest. A crowdfunding page has been set up at the link below and we would be very grateful for your help

[https://www.justgiving.com/crowdfunding/Alnevillagehallclock?utm\\_term=YJn3GwwW4](https://www.justgiving.com/crowdfunding/Alnevillagehallclock?utm_term=YJn3GwwW4)

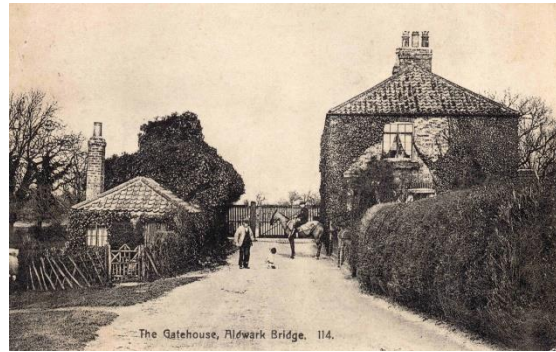
24-Jul-2024:

**New tolls planned for Aldwark Bridge:**

Aldwark Bridge has been in place since approval was granted in 1772 to replace the existing ferry, and the current 40p charge for cars has remained the same since 2005. The owners are losing money and a proposal to increase the standard toll to £1 is being made. Any such change must be approved by Government Statutory Instrument in line with ancient toll



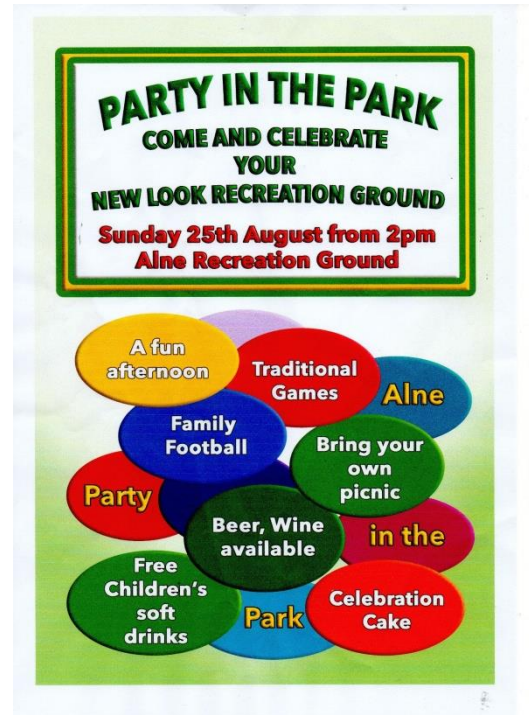
legislation. Please see <https://www.aldwardbridge.com/about/> for further information and for where to send letters of approval or objection.



30-Jul-2024:

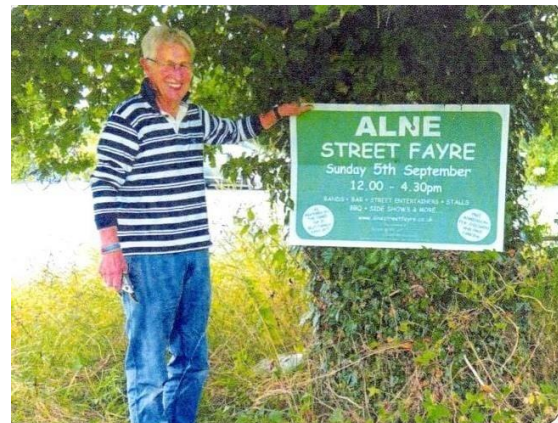
**Party in Your Park on Bank Holiday Sunday.** To celebrate the wonderful improvements that have been carried out in the APLA recreation field over the last nine months, APLA is holding a "Party in Your Park". Try out the new 561-metre all-access path around the field, let your children loose on the new Space Net in the playground, play on the new drums, enjoy basketball on the completely new Multi-Use Games Area and try to beat the goalie on the new mini-sized football pitch.

It's on Sunday 25-August at 2:00pm. Bring your own picnic. Beer and wine for sale. Free children's drinks. See poster alongside.



01-Sep-2024:

**Fundraising for the Dennis Myers Memorial Bench.** Dennis Myers (1949-2021) came to Alne in 1974 and, for nearly 50 years, was a stalwart supporter of the village school, the youth club and, more latterly the Chairman of Alne Parish Leisure Association and operations supremo of Alne Street Fayre. Dennis was a tennis player in his earlier years and continued his interest with being non-playing captain of Alne B for many years. He always attended both home and away matches and it is intended that his memorial bench will be placed adjacent to the Alne tennis courts where he spent so many happy hours.



09-Sep-2024:

Click here to see the September Parish Newspaper (in full colour!)

28-Sep-2024:

Click here to see the October Parish Newspaper (in full colour!)

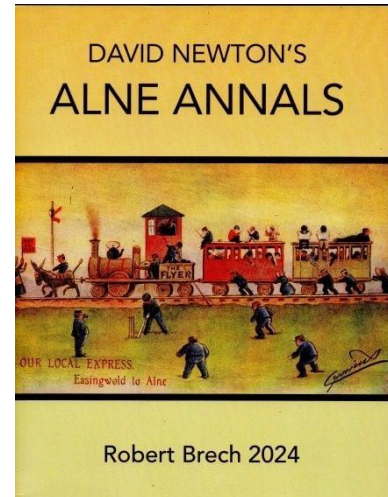
01-Oct-2024

Alne Annals 2024 Now available.

The 2024 edition of Alne Annals is two-and-a-half times as big as the original and contains many more photographs. It is not a history and it is not a chronology, but it is a collection of tales from many authors and publications from many sources. It thus forms a fascinating insight into the village and parish of Alne, its people and its pastimes over the years.

New for this edition:

- \* Nearly 100 more pages of Alne archives.
- \* Many more maps and photos.
- \* The Story of Gale Garth and Gale Road.
- \* Dating the pre-WW1 photos of Alne Station.
- \* Award-winning author Charity Norman, daughter of Vicar Norman, tells us of her childhood memories in Alne in the 1960s.
- \* Six histories of interesting Alne houses.
- \* The Coronavirus Plague in Alne, 2020-2022 and comparison to earlier plagues.
- \* A miscellany of interesting dates and their sources such as: When was the village pond filled in?
- \* A miscellany of anecdotes such as: Why isn't the Village Hall at Spout Dyke Corner?



£20. Pay online to Co-op Bank, APLA, 08-92-99, 67195084 with your name as the reference, and send a confirming email to Robert at [brech28@btinternet.com](mailto:brech28@btinternet.com) stating your delivery address. Or cash/cheque (payable to "APLA") to 6 Hallgarth, Alne YO61 1RN. Free hand delivery or pick-up in Alne. Add £4.50 for UK postage and packing.

Proceeds to the APLA recreation ground, UK Charity No 516566

- 25-Oct-2024: Whiteley's Cafe winter hours change from 03-November. See the new opening hours in the poster alongside. Alne Annals 2024 (see item above) can now be bought in the cafe.
- 25-Oct-2024: [Click here to read the November Parish Newsletter \(in full colour!\)](#)
- 25-Oct-2024: The bridge across the River Kyle has been restored and the path is open to Tollerton. Take care on the double bend in the dip and pick up the path into Main Street, Tollerton, 100m further up on the other side of the road. Thanks to Alne Parish Councillor Colin Fletcher who has been on this case for the whole of the nearly 5 years since the bridge was swept away in Feb-2020.

WHITELEY'S  
AT HOME FARM

VILLAGE  
CAFE & SHOP

Thank you for your continued support of our village café, we are very grateful for your custom. Heading into the Winter, should you wish to use our café for any social groups, such as bookclubs, mothers & toddlers or knit & knatter, then please do get in touch!

Our Winter opening days, between 3<sup>rd</sup> November and 20<sup>th</sup> March, will once again be Thursdays, Fridays and Saturdays, 9am-3.30pm.

For enquiries and information, please see:

Whiteley's Home Farm Cafe whiteleys\_at\_homefarm\_alne

Or contact us on:

01347838722 enquiries@homefarmalne.co.uk

08-Nov-2024: Alne Wreath Workshop on 06-December. See the poster alongside. Last year's very successful workshop raised funds for books, window locks and many other items for children who otherwise could not afford them. There are still five places available at this year's workshop. Contact Hannah at hannah.parmley@gmail.com to book in or for further information.



15-Nov-2024: The final green bin collection of the year is on Friday 29 November. There is no Christmas tree collection in January. Green bin collections will start again in March when a new subscription will be required..

19-Nov-2024: Alne Singers Christmas Concert is on Thursday 12-December. See the poster alongside.

15-Nov-2024 The final green bin collection of the year is on Friday 29 November. There is no Christmas tree collection in January. Green bin collections will start again in March when a new subscription will be required.



16-Dec-2024: Last-minute Christmas present? Copies of the new edition of Alne Annals are still available - but when they are gone, they are gone. See the entry for 01-October below.

16-Dec-2024; Click here to read the December Parish newsletter (in full colour!)

27-Dec-2024: Upcoming Bin Collections:  
  
Monday 30-Dec : Recycling.  
  
Monday 06-January : Black bin.  
  
Saturday 11- January : Recycling.  
  
Friday 17-January: Black bin and back to normal