

PARISH NEWSLETTER

November 2021

**for the villages of Aldwark, Alne, Flawith,
Tholthorpe, Tollerton and Youlton**

The Anglican ministers for the villages in the Parish of Alne are Revd. Debbie Coyne and Revd. Carmel Gittens. They can be contacted by telephone on 01423 360759 or by e-mail at rev.deborah.coyne@gmail.com and 01347 833437 or carmel-gittens@live.co.uk respectively.



The Royal British Legion has been celebrating its 100th Anniversary throughout 2021 with a special programme of activity, paying tribute to those who have contributed to its history and celebrating with the communities across the UK and around the world who are at its heart.

The Legion was founded on 15th May 1921, when representatives of the four national organisations of ex-Servicemen came together at the Cenotaph to create the British Legion. Born in the aftermath of the First World War, the charity's founding mission was to fight for the rights of those who had given so much and come back to so little.

Today, with 100 years of experience, the Legion provides lifelong care and support to all serving and ex-serving personnel and their families.

The Legion's red poppy is both a symbol of Remembrance and hope, including hope for a positive future and peaceful world.

Poppies are a show of support for the Armed Forces community, those currently serving, ex-serving personnel and their families; and a symbol of Remembrance for all those who have fallen in conflict.

The inspiration and history behind the poppy becoming a symbol of Remembrance is from the poem "In Flanders Fields" written by John McCrae.

During WW1, much of the fighting took place in Western Europe. The countryside was blasted, bombed and fought over repeatedly. Previously beautiful landscapes turned to mud; bleak and barren scenes where little or nothing could grow. There was a notable and striking exception to the bleakness - the bright red Flanders poppies. These resilient flowers flourished in the middle of so much chaos and destruction, growing in the thousands upon thousands.

In the spring of 1915, shortly after losing a friend in Ypres, a Canadian doctor, Lieutenant Colonel John McCrae, wrote his now famous poem after seeing poppies growing in battle-scarred fields.

In Flanders Fields

by John McCrae

In Flanders fields the poppies blow
Between the crosses, row on row,
That mark our place; and in the sky
The larks, still bravely singing, fly
Scarce heard amid the guns below.

We are the Dead. Short days ago
We lived, felt dawn, saw sunset glow,
Loved and were loved, and now we lie,
In Flanders fields.

Take up our quarrel with the foe:
To you from failing hands we throw
The torch; be yours to hold it high.
If ye break faith with us who die
We shall not sleep, though poppies grow
In Flanders fields.



News from Alne Church

We have now settled into a routine of services on the second and fourth Sundays of each month at 10.30am. Requests are already coming through for 2022 and 2023 weddings along with more baptisms.

Christingles – are you able to make a few for the village celebration?

The Christingle service will take place at 4pm on Christmas Eve with any donations shared between the church restoration fund and The Children's Society, who help many children in various times of need.

Can you help to prepare a few of the Christingles for the children? Candles, tape and instructions will be at the back of the church in December to add to oranges alongside sweets or dried fruit.

Please register any interest in helping or attending with Peter Cove at alnescove@btinternet.com as advance notice of numbers will help us to reduce waste and manage the event safely.

Concert

Helen Dawson's postponed Bach cello recitals were well attended at both Brafferton and Alne, and very much appreciated. More events will take place in the church, especially once we have a new heating system installed, which should be quieter and more efficient.



Chris Bond's Channel Swim – 25th September 2021

The Just Giving page set up for donations has raised almost £1000 for the St Mary's Restoration Fund. The page will remain open for another couple of weeks should anyone wish to donate after reading this.

<https://www.justgiving.com/crowdfunding/chris-bond-swim>

It is fascinating to read the full story in Chris' own words in sheets that can be collected from inside the church and from the plastic box on the bench outside marked "Parish Newsletter". It is also on the Alne village website via this link: <https://www.alnevillage.co.uk/>

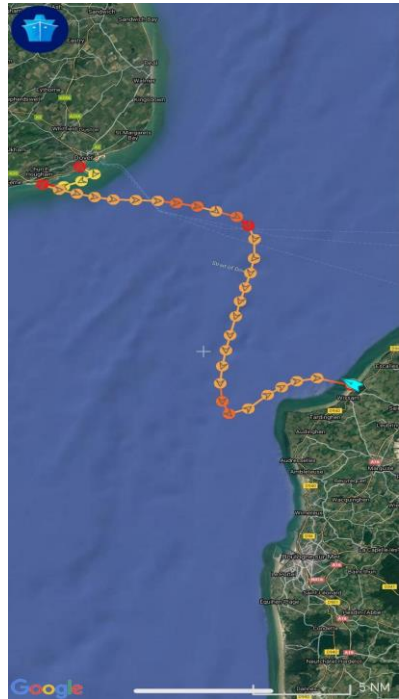
It is an amazing story of the triumph of the human spirit over adversity to reach a strong goal.

After the spark of an ambition in 2015 to swim the channel for causes very dear to Chris, including breast cancer awareness, he started regular training and some shorter swims, with many challenges along the way to both his body and mind.

His first attempt to swim the channel in 2016 resulted in some serious and life-threatening medical conditions, which most of us wouldn't risk re-creating in another attempt, but Chris started regular training again in 2017.

Following further delays due to the Covid situation, Chris finally got the call that the weather conditions were favourable on 25th September 2021 – though this forecast turned out to be a little over-optimistic compared to the reality.

After almost 13½ hours, Chris completed the swim, which was far from straightforward, in the memory of his good friend and for others experiencing breast cancer, with funds being raised for other causes too through his considerable efforts. We are very grateful to those who have contributed so far.



Parish Records

Weddings

2nd October 2021 - Amber Klievens and Gavin Clarke

Baptisms

2nd October 2021 – Rosa Clarke

24th October 2021 – Sidney Smith

COMMUNITY NEWS

Village Hall News



Pub Night

Friday 12th November at 7.00p.m. 'til 10.00p.m. Our first one this year! We look forward to seeing old friends and welcoming new ones, so pop in and say hello.

Please note that we are currently accepting cash only.

Christmas Eve Pub Night

We are in need of helpers for the Christmas Eve Pub Night.

Village Hall Committee Treasurer

The Village Hall Committee is looking for a new Treasurer. If you can help, please contact Cassandra Bullock - messy.fairy@gmail.com.

Alne WI Meeting 13th October 2021

This month's meeting was opened by Joan Baram (President) happy to once again be in charge of the wooden gavel (the little things we missed in lockdown).

The meeting was well attended and Joan warmly welcomed members and visitors. Joan enthusiastically informed us of the committee's future ideas for meetings and our celebration to commemorate our 95th year. Members were encouraged to put forward any further suggestions. Diana (brilliant Secretary) followed giving us WI news and info.

This evening's speaker was - Patricia Stafford NADFAS Volunteer Book Conservator (also an Alne WI Member).

Patricia started her talk by explaining how answering an advertisement and being successful at interview, her Volunteer Book Conservator journey began, with the first mantra of no makeup, or nail polish allowed, immediately given. After 5 years of extensive training (the first year only being allowed to master brushing the spines of books) she was allowed to assess & apply the very skilful job of handling books alone.

Patricia was and is (once reopened) based at York Race Course Library, a muttering of where? York Race Course apparently has a small library which is lucky to be the home to some of the oldest books in the world.



The year Royal Ascot was closed & the meeting was held in York, the Queen visited the Library, loved it & even coveted some of the books it contained. An extra jewel for York, to add along with the Minster Library. Patricia's talk was fascinating, entertaining and informative full of anecdotes but importantly practical book care advice; never store/display books near a real fire, soot and the insects that are on logs, silver fish & wood lice, can cause irreparable damage. Books are better if they are laid flat so as not to damage their spines and definitely keep them away from too much light etc. Patricia's husband Bob very kindly assisted with the showing of photo slides. A very interesting talk.

The committee provided cakes, biscuits, tea and coffees.

Next meeting **Wednesday, 10th November** - Speaker Jean Yorston – My Trip to Base Camp Everest & Posh Carrier Bags for Charity Tombola Raffle

Visitors (£3) are always given a very warm welcome.

Alne Music Club - Plumhall Concert on Friday 10th December 7.30p.m.

Our concert program is now well underway with a great debut show from Becky Mills taking place on Saturday, 23rd October. This was a fine start to our new venture hosting acoustic music performances at Alne.

Our 2nd concert is exciting Yorkshire duo, Michelle Plum and Nick Hall, who together form Plumhall. They have a couple of critically acclaimed albums under their belt and are an acoustic duo with a propensity towards pop, folk and Americana. Their first album, Thundercloud, came out in 2014, and was critically acclaimed, being The Guardian/Observer Hidden Gem award winners, while also winning the Yorkshire Gig Guide Outstanding Songwriters Award. There is more of a country and Americana flavour to their debut.

Their more recent album, The Ghost of Noise, came out in 2020, but plans for a tour to launch this new record were sadly curtailed by the pandemic. The production is more sophisticated, including synthesisers and electric guitar on this record and at times they do rock out more. I saw them a few weeks ago at Thorganby Folk Club, where they went down a storm with the audience (see photos). Their songs have interesting back stories to them, based on personal experiences and are wide ranging in their scope, not traditional folk, but more upbeat and contemporary.

Tickets are available from this link:

<https://www.wegottickets.com/event/528683> or
<https://www.plumhallmusic.com/>

Alternatively if you don't use the internet then contact me by phone to reserve tickets.

On **Friday, 28th January 2022** we will host Easingwold singer songwriter Gary Stewart who plays homage to Paul Simon; together with Rosie Doonan, who has duetted with Peter Gabriel; in a great value double bill.

David Lepper

Alne Music Club Promoter - 01347 838114



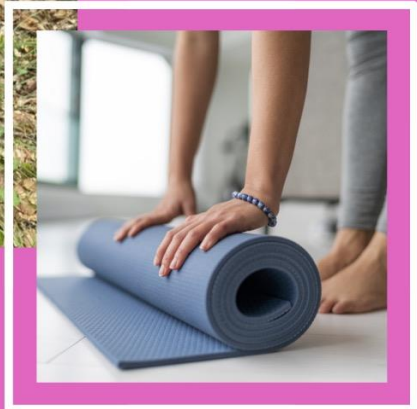
YOGA CLASS

in Alne

FEMALE ONLY COURSE. JUST TWELVE PLACES PER CLASS.



**To book a place call
07973 524 902
or email
laura@mumsyoga.com**



WHEN:

**Monday Mornings
1st November - 6th December**

WHERE:

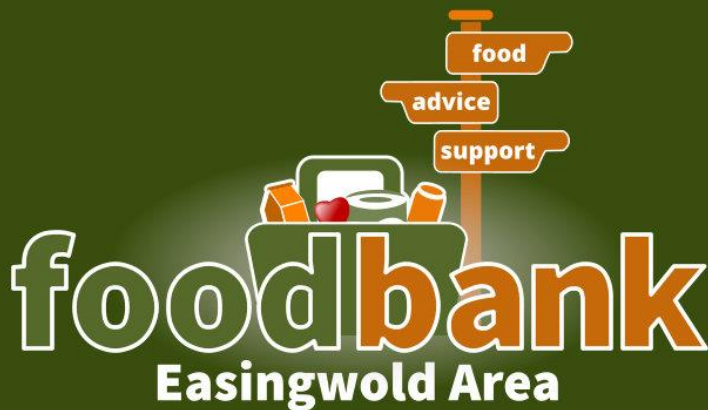
**Alne Village Hall
YO61 1RP**

WITH LAURA COLENZO

www.mumsyoga.com

Do you know what is available in Alne?

- * Everything about Alne and up-to-date news. See <https://www.alnevillage.co.uk/>
- * Daily Newspaper delivery and general stores
[Tollerton Stores 838436](#)
- * Sunday Newspaper delivery. See <https://www.alnevillage.co.uk/sunday-newspapers.html>
- * Bakery van outside Village Hall every Saturday 08:00 – 09:00
<http://www.amosandwelsh.com>
- * Farmshop making weekly (Wednesdays) deliveries in the village. See <https://farmgatefarmshop.com>
- * Milk delivery (and cream, eggs, yoghurts etc.)
[Contact Liz and Andrew Wade on 838806](#)
- * Heating Oil purchase co-operative. See <https://www.alnevillage.co.uk/oil-co-op.html>
- * Regular buses to Easingwold and York. See <https://reliancebuses.co.uk/service-30-30x-30se/>
- * Weekly bus to Morrisons in Boroughbridge. 11:00 Mondays.
See https://sites.create-cdn.net/sitefiles/29/8/9/298951/Morrisons_bus.pdf
- * Sports: Thriving tennis and cricket clubs. See <https://www.alnevillage.co.uk/tennis.html>
and <https://www.alnecc.co.uk/>
- * Alne Street Fayre, raising funds for the Alne recreation ground, sports field and play park. Now in its 37th year.
[The next Alne Street Fayre is on Sunday 19th June 2022.](#)
- * Maps. Historical maps are displayed in the Village Hall. There is an indexed map of Alne houses on the Parish Council notice board. Other maps of Alne and Alne Station can be found at <https://www.alnevillage.co.uk/maps.html>



Call our 24/7 message service
0772 44 44 750

We will always call you back.
Confidentiality assured.

Our service:

- We deliver to Easingwold and surrounding villages.
- If you wish, we can discuss further help and offer confidential support over a cuppa in your home.
- Our food packages contain tinned and dry goods with milk, bread and spread as well as toiletries. We can't supply fresh fruit and vegetables.

**Run by volunteers for
local people in need**



Imaginative / Contemplative Prayer



*Our next meeting will take place
On Wednesday 3rd November at 19:30
In St Michael Church Tollerton*

*All are very welcome to join us for
A time of quiet reflection
On a reading from the New Testament*



St Michael's church

now has a Facebook page

<https://www.facebook.com/stmichaelstollerton>

If you want to know
about services at St Michael's Church
or any of the other activities
taking place in the church
look for us on Facebook

ANGLICAN SERVICES

NOVEMBER 2021

Venue	7 th Nov	14 th Nov	21 st Nov	28 th Nov
Aldwark	10.30 a.m. Harvest Festival			
Alne		10.45a.m. Remembrance Sunday		10.30a.m. Joint Anglican/ Methodist service
Tollerton	10.30a.m. Holy Communion	10.30a.m. Morning Worship	10.30a.m. Morning Worship	10.30a.m. Morning Worship

METHODIST SERVICES

The Rev Elizabeth Cushion is the Methodist Minister for the villages around Easingwold. Elizabeth can be contacted on 01347 821460. You are welcome at all of the village services listed below.

NOVEMBER 2021

Date	Time	Venue	Service Details
7 th Nov	3.00p.m.	Tholthorpe	
14 th Nov	3.00p.m.	Tholthorpe	Remembrance E Cushion
21 st Nov	3.00p.m.	Tholthorpe	Cafe E Cushion
28 th Nov	10.30a.m.	Alne	Joint Anglican/ Methodist Service R Jackson

Contact Details:

The Anglican ministers for the villages in the Parish of Alne are Revd. Debbie Coyne and Revd. Carmel Gittens. Their contact details are:

Revd. Debbie Coyne 01423 360759 e-mail: rev.deborah.coyne@gmail.com

Revd. Carmel Gittens 01347 833437 e-mail: carmel-gittens@live.co.uk

The Methodist Minister for the villages around Easingwold is The Rev Elizabeth Cushion.

Elizabeth Cushion 01347 821460

Church Wardens/ Co-ordinators

St Mary's Alne

Sharon Oliver 07778 158770 e-mail mandsoliver@btinternet.com

St. Stephen's Aldwark

Vivienne Bird e-mail: viviennebird@hotmail.co.uk

St. Michael's Tollerton

Arthur Harland 01347 823575 e-mail: janeatwoodyedge@yahoo.co.uk

Alison Dowson 01347 838138 e-mail amcd2350@gmail.com

COPY DATE for December 2021 & January 2022 issue: 22nd November 2021 please.
e-mail: news@abchurches.org.uk