

Quilt 2 Tales of the sea

Lewis & Irene

Designed and made by Sally Ablett

Size: 48½" x 48½"



Main diagram

REQUIREMENTS

Fabrics from the Tales of the sea collection:

1. A136.2 - Tale of the sea double border - 1yd - 1mtr
2. A137.3 - Narwhals on dark blue - $\frac{1}{2}$ yd - $\frac{1}{2}$ mtr
3. A138.1 - Mermaids on light blue - 1yd - 1mtr
4. A139.2 - Seabed on light blue - $\frac{3}{8}$ yd - 40cm
5. A140.3 - Seaweed on dark blue - $\frac{3}{8}$ yd - 40cm
6. BB40 - Off white - $\frac{1}{2}$ yd - $\frac{1}{2}$ mtr
7. BB69 - Fresh aqua - $\frac{3}{8}$ yd - 40cm

Wadding and backing 52" x 52"

Use $\frac{1}{4}$ " seam allowance throughout. Press all seams open unless otherwise noted.

Cutting

From fabric 1 cut

4 x 8 $\frac{1}{2}$ " x 16 $\frac{1}{2}$ " (inner border)

From fabric 2 cut

4 x 4 $\frac{7}{8}$ " x 4 $\frac{7}{8}$ " cut in half diagonally once (for block)
34 x 2 $\frac{5}{8}$ " x 2 $\frac{5}{8}$ " (number 3 border)

From fabric 3 cut

You will have to joint your strips for the length

2 x 3 $\frac{1}{2}$ " x 49" (outer border)
2 x 3 $\frac{1}{2}$ " x 43" (outer border)
4 x 6 $\frac{1}{8}$ " x 6 $\frac{1}{8}$ " (inner border corners)

From fabric 4 cut

16 x 2 $\frac{1}{2}$ " x 2 $\frac{1}{2}$ " (block)
8 x 4 $\frac{7}{8}$ " x 4 $\frac{7}{8}$ " cut in half diagonally once (inner border corners)

From fabric 5 cut

16 x 2 $\frac{1}{2}$ " x 2 $\frac{1}{2}$ " (block)
38 x 2 $\frac{5}{8}$ " x 2 $\frac{5}{8}$ " (number 3 border)

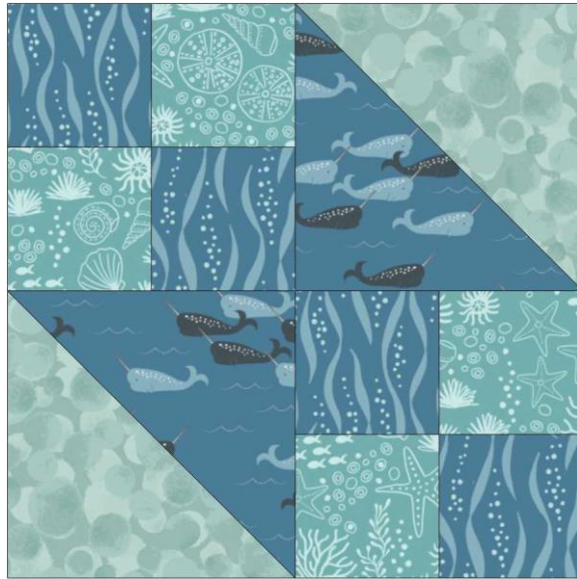
From fabric 6 cut

72 x 2 $\frac{5}{8}$ " x 2 $\frac{5}{8}$ " (number 3 border)

From fabric 7 cut

2 x 1 $\frac{1}{2}$ " x 34 $\frac{1}{2}$ " (number 2 border sides)
2 x 1 $\frac{1}{2}$ " x 32 $\frac{1}{2}$ " (number 2 border top and bottom)

Making block



Block 1

Lay out the fabric for the block.

Sew the small squares together of fabric 4 and fabric 5 to make a larger square.

Next sew the triangles to make a square.

Sew in rows to make the block.

You will sew 4 in total. Sew in rows to make a larger square.

Borders



Corner block

Sew the triangles to the opposite corners press back and then sew the last two triangles. Make 4 in total.

Add the strips of fabric 1 to the sides of the block.

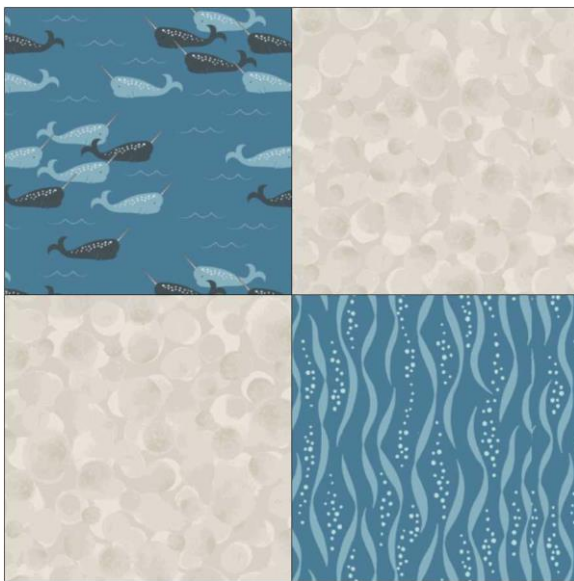
Sew the squares to each end of fabric strips 1. Add this to the block.

Border number two

Sew strips to the sides and then the top and back.

Border number three

Lay out your squares of fabrics 2, 4 and 6.



Sew in unit of four in total you will need 36 blocks. Look at diagram for placement of fabrics in each of the squares.

On the sides sew eight blocks together and sew to panel.

For top and bottom sew ten squares together and sew this to the top and bottom of panel.

Last border sew to sides and then top and bottom.

Quilting

Sandwich quilts top, wadding and backing

Quilt by hand or machine as desired.

Binding

Use your favourite method from fabric4 to bind the quilt