

# Quilt 3 Tales of the sea

**Lewis & Irene**

Designed and made by Sally Ablett

Size: 48½" x 48½"



**Main diagram**

## REQUIREMENTS

Fabrics from the Tales of the sea collection:

1. A136.3 - Tale of the sea double border - 1yd - 1mtr
2. A137.1 - Narwhals on white - ½yd - ½mtr
3. A138.3 - Mermaids on dark blue - 1yd - 1mtr
4. A139.3 - Seabed on sea blue - ⅔yd - 40cm
5. A140.2 - Seaweed on mid blue - ⅔yd - 40cm
6. BB72 – Ocean - ½yd - ½mtr
7. BB69 – Fresh aqua - ⅔yd - 40cm

Wadding and backing 52" x 52"

Use ¼" seam allowance throughout. Press all seams open unless otherwise noted.

## Cutting

From fabric 1 cut

**4 x 8½" x 16½" (inner border)**

From fabric 2 cut

**4 x 4⅞" x 4⅞" cut in half diagonally once (for block)**  
**34 x 2⅝" x 2⅝" (number 3 border)**

From fabric 3 cut

You will have to joint your strips for the length

**2 x 3½" x 49" (outer border)**  
**2 x 3½" x 43" (outer border)**  
**4 x 6⅛" x 6⅛" (inner border corners)**

From fabric 4 cut

**16 x 2½" x 2½" (block)**  
**8 x 4⅞" x 4⅞" cut in half diagonally once (inner border corners)**

From fabric 5 cut

**16 x 2½" x 2½" (block)**  
**38 x 2⅝" x 2⅝" (number 3 border)**

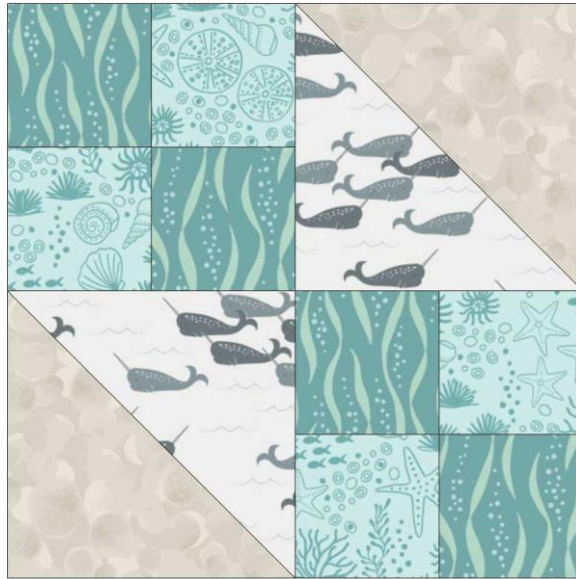
From fabric 6 cut

**72 x 2⅝" x 2⅝" (number 3 border)**

From fabric 7 cut

**2 x 1½" x 34½" (number 2 border sides)**  
**2 x 1½" x 32½" (number 2 border top and bottom)**

## Making block



### Block 1

Lay out the fabric for the block.

Sew the small squares together of fabric 4 and fabric 5 to make a larger square.

Next sew the triangles to make a square.

Sew in rows to make the block.

You will sew 4 in total. Sew in rows to make a larger square.

## Borders



### Corner block

Sew the triangles to the opposite corners press back and then sew the last two triangles. Make 4 in total.

Add the strips of fabric 1 to the sides of the block.

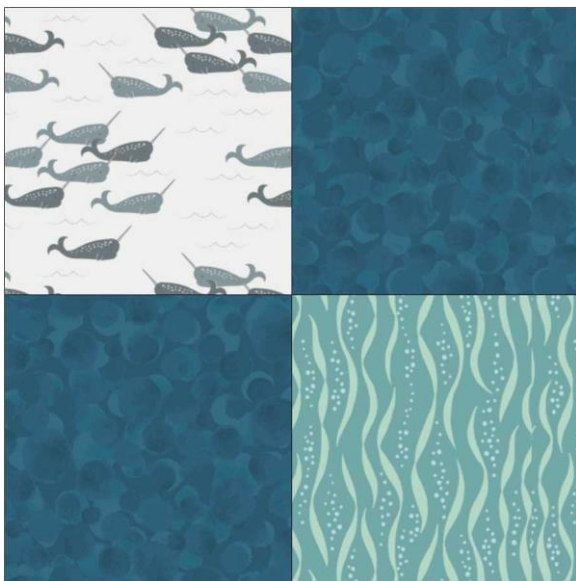
Sew the squares to each end of fabric strips 1. Add this to the block.

### **Border number two**

Sew strips to the sides and then the top and back.

### **Border number three**

Lay out your squares of fabrics 2, 4 and 6.



Sew in unit of four in total you will need 36 blocks. Look at diagram for placement of fabrics in each of the squares.

On the sides sew eight blocks together and sew to panel.

For top and bottom sew ten squares together and sew this to the top and bottom of panel.

Last border sew to sides and then top and bottom.

### **Quilting**

Sandwich quilts top, wadding and backing

Quilt by hand or machine as desired.

### **Binding**

Use your favourite method from fabric4 to bind the quilt