

Go-Pods

Establishing your Go-Pods year of manufacture

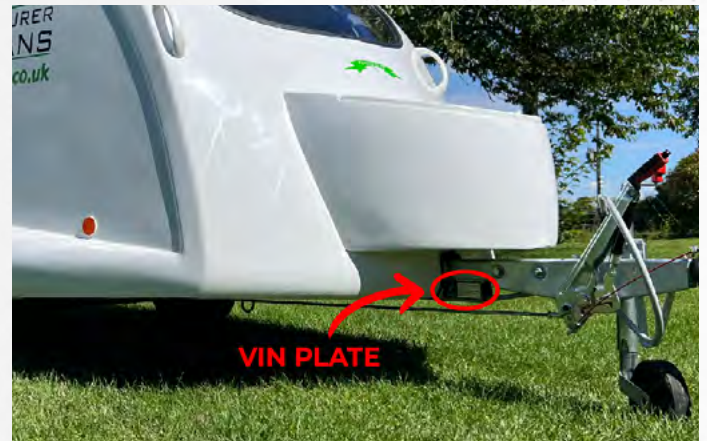
If you're not sure of the year of manufacture for your Go-Pod (*say you bought it privately, without the original documentation included*) you can use the table below as a reference against the VIN plate, secured to the draw bar.

10TH LETTER VIN	YEAR
R	2024
P	2023
N	2022
M	2021
L	2020
K	2019
J	2018
H	2017
G	2016
F	2015
E	2014
D	2013
C	2012
B	2011
A	2010

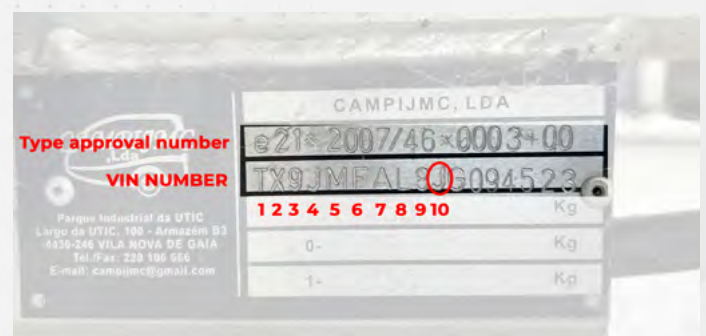
Finding your VIN plate

The metal VIN plate is riveted to the draw bar of your Go-Pod, usually on the left hand side (when you are facing the front of the Go-Pod).

Most Go-Pods produced from 2010 onwards have a VIN number starting with "TX9JMFAL".



Starting from "T" as the first character, count 10 characters across. The 10th character will always be a letter and will correspond to a year on the chart.



This particular Go-Pod is a 2018 model, as the 10th character is "J".