

A photograph of a white sign with the words "Eternal Beauty" in a stylized font. To the right of the text is a graphic of a woman's face with large eyes and red lips. The sign is mounted on a wall with some screws visible.

Eternal
Beauty

Pigment Guide

A large, stylized graphic of a woman's face. The face is white with large, dark eyes and bright red lips. The background is black. The graphic is framed by a white border on the left and a red border on the right.

www.eternalbeautyuk.com





Founded in 1984, Biotouch, Inc. is now one of the leading manufacturers and trainers of semi-permanent and permanent makeup, permanent makeup machines, and accessories.

Since the very beginning, Biotouch has led the challenge of saving women from the time-consuming regimen of enhancing their beauty. Biotouch's unique approach combines 5,000 years of Asian makeup techniques with modern technology to create the finest permanent and semi-permanent makeup products available today.

Biotouch stresses on-going research and development, leading the way in new techniques, chemistry and technology to produce the best products, service and training in the permanent and semi-permanent industry.

This Guide has been produced by Eternal Beauty (UK) Ltd, the premier distributor of Biotouch products in the UK.

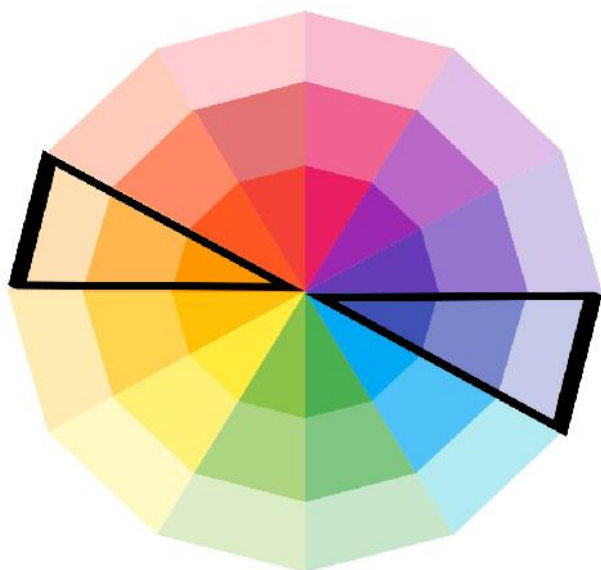
It is intended to be a guide only, due to the nature of the printing process some of the colours may not be exact representations of the pigments prior to or following a semi-permanent makeup procedure.

Please also note that depending on the clients skin tone the pigments may not behave exactly as expected. For example a warm colour used on a very cool skin tone may still show a blue tint when healed.

The colour wheel can also be split into cool and warm colours; this is important when choosing colours for your client.

Generally, cool colours will heal cool and warm colours will heal warm - this is not an exact science though, but it is more likely to happen if a cool colour is used on a cool skin toned client and vice versa.

There is no need to panic though, as this is easily corrected.



Complementary colours are opposite each other on the colour wheel.

Mixing complementary colours will cancel each other out.

For example, if a client has blue undertones, add orange to the existing colour to neutralise the blue

Key to the Pigment Guide



Warm Tone

The Colour has more red and may fade to a red tint. May be used with a cool counterpart to prevent colour change



Cool Tone

The Colour has more blue and may fade to a blue tint. May be used with a warm counterpart to prevent colour change



Neutral Tone

Stays the same colour when it heals. For example green is neutral because it is equal parts blue (cool) and Yellow (warm).

Colour Uses

Please note that these suggestions are for guidance and some of the colour uses are down to personal preference



Brow Pigment



Lip Pigment



Eyeliner Pigment



Corrector / Camouflage Pigment



Scalp Pigment



Areola Pigment



Scar / Camouflage Pigment

Micropigments

Chocolate Brown

Use on medium to dark skin-toned clients. Add Light Brown to achieve a softer look. Add Red or Orange to prevent fading to grey or blue.



Dark Brown

Ash base. Lighter than Chocolate Brown, can be used on all skin tones, but mostly used on medium brown skin tones. Add Orange or Light Brown to produce a more natural look.



Brown

Mostly used on redheaded clients because of the warm, red tone base. If the skin has a lot of yellow tones, this colour will create a warmer brown tone.



Light Brown

Gold-based brown used for light skin tones. Add Yellow or Taupe for a more blonde look.



Micropigments



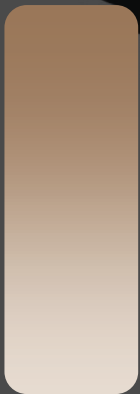
True Cocoa

Neutral Dark brown pigment. This colour can be used on its own and does not need to be mixed to avoid colour changes.



True Brown

Neutral mid brown pigment. This colour can be used on its own and does not need to be mixed to avoid colour changes.



True Hazel

Neutral light brown pigment. This colour can be used on its own and does not need to be mixed to avoid colour changes.



Real Red

True red lip colour. Add Orange for darker skin tones to maintain brightness.



Japanese Ruby

Neutral Soft Red, add Dark Red for a darker lip liner; add Hot Pink to highlight pout area. Mix with Skin to soften.



Red Wine

Dark Mauve lip colour. Add Orange to prevent from turning too dark.



Micropigments

Pink Mauve

Soft pink lip colour for fair to medium skin tones. Add White (with caution) for a brighter pink or to highlight pout area.



Burgundy

A deep berry lip colour. Add Strawberry to prevent from turning to blue on darker skin tones.



Dark Red

Dark earthy red lip colour. Add Orange to prevent from turning to blue on darker skin tones.



Sunset

A soft orange red lip colour.



Rose Red

Neutral soft rose colour for fair to medium skin tones. Mix with Pink Mauve for rosier pinky lips. Darken with Mystic Red.



Orange

Neutralizes darker tones of blue and grey brows and lips. Add to Black to prevent eyeliner turning to blue.



Micropigments

Jet Black

Carbon based, our blackest black. Add Orange or Red to prevent fading to blue. Special formula for soft black eyeliner: One drop of Jet Black + one drop of Midnight Black + one drop of Fire Red.



Black

A soft black eyeliner. Add Orange or Blue Corrector to prevent fading to blue.



Grey

A good match for people with salt and pepper grey hair. Add Taupe or Light Brown to lighten, or mix with Dark Brown for light to medium brown skin tones.



White

Lighten lip colours (use with caution!) Do not mix with brow colours and never use alone for camouflage



Green

Mix with Black or Espresso for people with green eyes. Mix with Taupe, Grey or Brown for different tones of green eye shadow.



Blue

Pure blue colour. Mix with Grey or Taupe and add on top of black eyeliner for a soft blue shadow.



Micropigments

Olive

Neutralizes lighter tones of orange, pink or purple. Mix with brown colours to prevent colour changes.



Taupe

Yellow-based colour for blonde hair and fair skin clients. Also used to enhance or lighten eyebrow tones. Neutralizes darker tones of orange, pink or purple eyebrows. Mix with brown colours to prevent colour changes.



Beige

Camouflage and cover small mistakes for lighter skin tones (dilute with water 1:1). Mix with Skin, Magic Colour or Taupe to darken and match skin tones.



Yellow

Lightens dark brown colours: change eyebrows from dark brown to a lighter tone.



Double Drop



Midnight Black

Not the darkest black available, but needs a complementary base of Fire Red to maintain true colour. Ideal for clients who want soft black eyeliner.



Deep Brown

A deep rich brown. Use with Midnight Black for a dark brown eyeliner. This mixture is good for dark skin tones.



Coffee Bean

Great for brows on auburn and redheaded clients. Add Olive to neutralize if needed.



Mocha

A dark blonde colour good for light to medium skin tones. Use with Purple Corrector or Olive to create an ash base and neutralize warm tones.



Golden Brown

The lightest brown available in the Double Drop line. Good for blondes and light skin tones. Add Taupe to prevent colour from fading to Orange.



Double Drop

Espresso

Darker than Deep Brown for dark skin tones. Add orange to prevent colour from turning too dark.



Fire Red

An intense and vibrant red for a range of skin tones, from light to dark. Add Orange to maintain brightness on darker skin tones.



Blush

A soft, earthy red colour. Mix with Rose Red for an even softer colour; darken with Mystic Red, Raisin; lighten with skin or Magic Colour.



Cranberry

A dark berry colour. Add Strawberry to neutralize blue tones.



Mystic Red

An earthy brick colour for medium to dark skin tones. Lighten with Rose Red. Add Orange to neutralize the blue undertone.



Pink

A soft, gentle pink that will fade to a very natural, almost nude shade. Mix with Rose Red for added depth.



Double Drop



Hot Pink

Goes on bright but softens to true pink. Mix with Japanese Red for added vibrancy and fade resistance.



Strawberry

A rich, coral colour. Ideal for clients who love orange, bronze and similar warm tones.



Skin

A flesh colour used to lighten and soften lip and areola pigment colours. Camouflage scars or eyebrow and lip mistakes. Dilute with water and mix with Beige or Taupe to match skin tones.



Blue Brow Corrector

Use to correct blue, grey or green-blue eyebrows. After corrected, the brow will turn to a brown tone.



Blue Lip Corrector

Used to neutralize blue or brown lip tones. Can be used alone as a lip colour or mixed with another to prevent colour from turning too blue, but is not strong enough for correcting very dark lips. Use Orange or Strawberry for very black lip correction.



Purple Brow Corrector

Use to correct purple, orange or pink eyebrows. Or mix with brown colours to prevent colour changes.



Microblading

True Night

Used for Skin Tones 5 & 6



Asian Brown

Used mainly for the Asian community with skin tones 2 & 3



Foxy Red

Used for people with red hair and cool skin tone 2. For people with warmer skin tones you can add a drop of Royal Olive



Camel Brown

Used for blondes with skin tone 1



Microblading



Royal Olive

This colour has an olive undertone that is best suited to Europeans that have a warmer skin tone.



Orange Warmer

Apply pigment after procedure to 'brown up' any brow colour



Yellow Lighten

Apply this pigment after the procedure to lighten up any brow colour or create more golden shades



Pure

BROW SELECTIONS	EYELINER SELECTIONS	LIP TONE SELECTIONS	RESTORER / CORRECTIVE	CAMOUFLAGE SELECTIONS
B - TONE 1 Tea Leaf B - TONE 2 Medium Ash B - TONE 3 Brunette B - TONE 4 Brownie B - TONE 5 Mud Pie B - TONE 6 Dark Chocolate OTHERS: Coffee Olive Drab Milk Chocolate	E - 1 Always Black E - 2 Wet Black E - 3 Dark Chocolate E - 4 Jet Black E - 5 Green E - 6 Blue OTHERS: Mud Pie Pure Black	L - 1 Chicago Red L - 2 Rose Pink L - 3 Flamingo L - 4 Apple Red L - 5 Dark Ruby L - 6 Cocoa OTHERS: Rose Wood Earthy Red Pink Brick	R - 1 OG-B-R Pine Tree - Orange Brow Restorer R-2 PK-B-R Medium Ash - Pink Brow Restorer R-3 PL-B-R Olive Drab - Purple Brow Restorer R-4 BL-B-R Pink Brick - Blue Brow Restorer R-5 BL-L-R Chicago Red - Blue Lip Restorer R-6 BL-E-R Always Black - Blue Eyeliner Restorer	C-1 Mushroom - Orange Camouflage C- 2 White C- 3 Nude - Blue Camouflage C - 4 Magic Color C - 5 Tea Leaf C - 6 Coffee OTHERS: Yellow Olive Drab



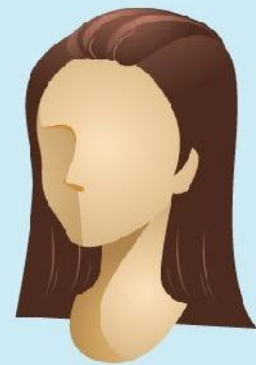
TYPE I

White; very fair;
freckles. Always burns,
never tans



TYPE II

White; fair.
Usually burns,
tans with difficulty



TYPE III

Beige; very common.
Sometimes mild burn,
gradually tans



TYPE IV

Beige with a brown tint;
typical Mediterranean
Caucasian skin. Rarely burns,
tans with ease



TYPE V

Dark brown.
Very rarely burns,
tans very easily



TYPE VI

Black.
Never burns,
tans very easily

Pure



Toffee

The same light brow tones as Mocha, Golden Brown & Coffee Bean in the Double Drop range. A Dark Blonde colour for light to medium skin tones. Used with Olive Drab to create an ash base and will neutralize warm tones.



Tea Leaf

A Brow Tone 2 pigment its a deep leafy green colour perfect for correction



Medium Ash

A cool brown and will fade out to a Grey tone. It can also be used as a Pink Brow Restorer.



Brunette

A brow tone 4 a deep rich brown, the same as Deep Brown in the Double Drop range.

This is a 'warmer' dark brown but still has a blue base and may fade to blue on a cool skin tone client



Mud Pie

A very dark rich colour for medium to dark skin tones. Add Orange to prevent colour from turning too dark.

This is a 'warmer' dark brown but still has a blue base and may fade to blue on a cool skin tone client



Dark Chocolate

Brow Tone 6 being the darkest brown in the Pure range.

A very cool colour. May turn blue on cool skin tone clients



Pure

Milk Chocolate

Brown-base red colour, add Rose Red for a more neutral colour.



Coffee

A medium brown for brows, the same as Coffee Bean and Golden brown in the Double Drop range.



Wet Black

Will give a very dark and shiny look to eyeliner. Premixed to avoid fading to blue

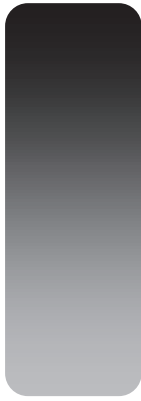


Jet Black

Carbon based the blackest black. Add Orange or Red to prevent fading to Blue.



Pure



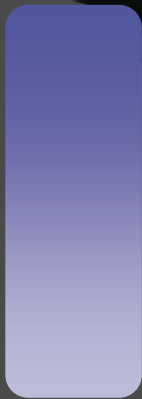
Pure Black

Is the same as Midnight Black in the Double Drop range.



Always Black

Used as strong black eyeliner colour and can also be used as a blue eyeliner restorer. Pre mixed to avoid turning blue



Blue

For eyeliners. Can be used under Black to give a lovely Blue tone to eyeliner.



Green

Used for eye liners. Use under Black to give a lovely touch of green to the eyeliner.



Chicago Red

Can be used alone on the lips for great Red colour or as a Blue Lip Restorer.



Rose Pink

A soft gentle pink that will fade to a very natural almost nude shade. Mix with Rose Red for added depth.



Pure

Flamingo

is the same as Hot Pink and Strawberry in the Double Drop range. Goes on bright but fades off to a true pink. Add a drop of Japanese Ruby for added vibrancy and fade resistance.



Bright Red

An intense and vibrant red the same as Fire Red in the Double Drop range, and can be used for many skin tones.



Cherry

A dark berry colour, the same as Cranberry in the Double Drop range



Earthy Red

A great dark warm red colour for lips.



Rosewood

An earthy brick colour for medium to dark skin tone. Lighten with Rose Red. Add Orange to neutralize the blue undertones.

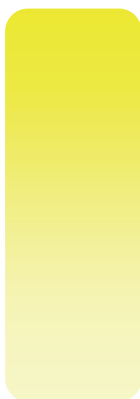


Apple Red

A lovely soft earthy colour, mix with Rose Red for a fresh look, similar to Blush in the Double Drop range.



Pure



Lime

Yellow-based colour for blonde hair and fair skin clients. Also used to enhance or lighten eyebrow tones. Similar to Taupe Micropigment



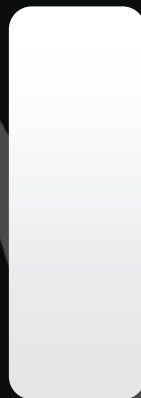
Olive Drab

A Purple Eyebrow restorer



Pink Brick

Blue Brow Restorer



White

Used to lighten lip colours (use with caution) Do not mix with brow colour and never use alone for camouflage.



Nude

Used as a blue camouflage



Mushroom

Used to camouflage Orange



Pure



Magic

A creamy light neutral colour used to tone down and neutralize. Can be used on eyebrows, eyeliner, lips and for any type of camouflaging. This colour will not leave residue. For qualified and advanced technicians, this shade also works effectively when doing paramedical procedures



Yellow

Used to lighten dark brown colours and add a warmer tone



Rose Line



Blur out edges and soften the middle for focus



Produce a puffy, cottony effect



Full, plump lips with color accents



Frame the Lip contours and create a pouty look



A light, powdery, translucence to achieve fullness



Powdering the lip's contours can reduce size differences between the upper and lower lip

Blush Rose

For Medium Lip Tones. Slightly lighter than Blush from the Double Drop Range



Cream Rose

Violet based cream colour for Highlighting



Fuschia Rose

NOT to be used for Blue Lip Tones



Chicago Rose

For Blue or Brown Lip Tones, can be used to correct blue lips. Similar to Chicago Red in the Pure Range



Rose Line

Berry Rose

Cool, blue based red lip pigment. For Pinky Lip Tones. Similar to Cranberry in the Double Drop Range



Earthy Rose

For Medium Lip Tones. Similar to Earthy Red from the Pure Range.



Flame Rose

For Any Lip Tone, similar to Double Drop Fire Red.



Pink Rose

For Fair Lip Tones, very similar to Pink from the Double Drop Range



Find us on Social Media



@ebukltd



info@eternalbeautyuk.com

© 2019 Eternal Beauty (UK) Ltd

Biotouch & The Biotouch Logo are registered Trademarks of Eternal Beauty

This guide should not be copied or reproduced without the express consent of Eternal Beauty. This is produced to be a guide and in no way replaces professional training for the procedures mentioned in this book. Eternal Beauty will not be held liable for any procedure carried out by a technician without proper training, qualifications of insurance.



6 04565 12520 0