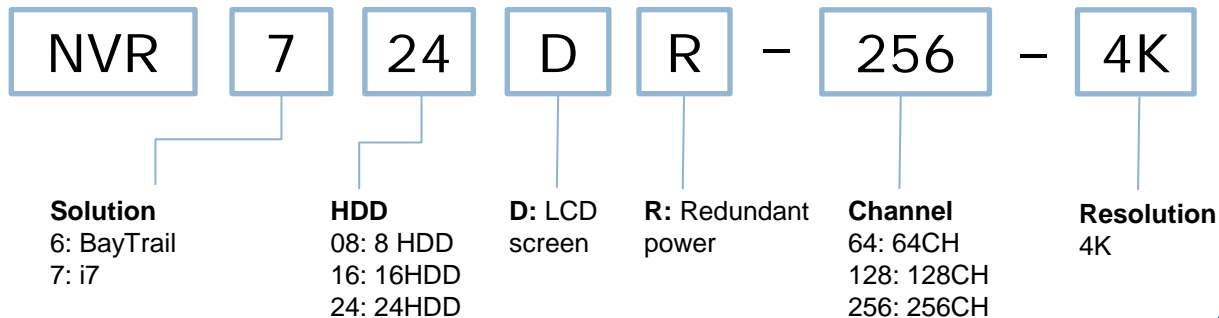
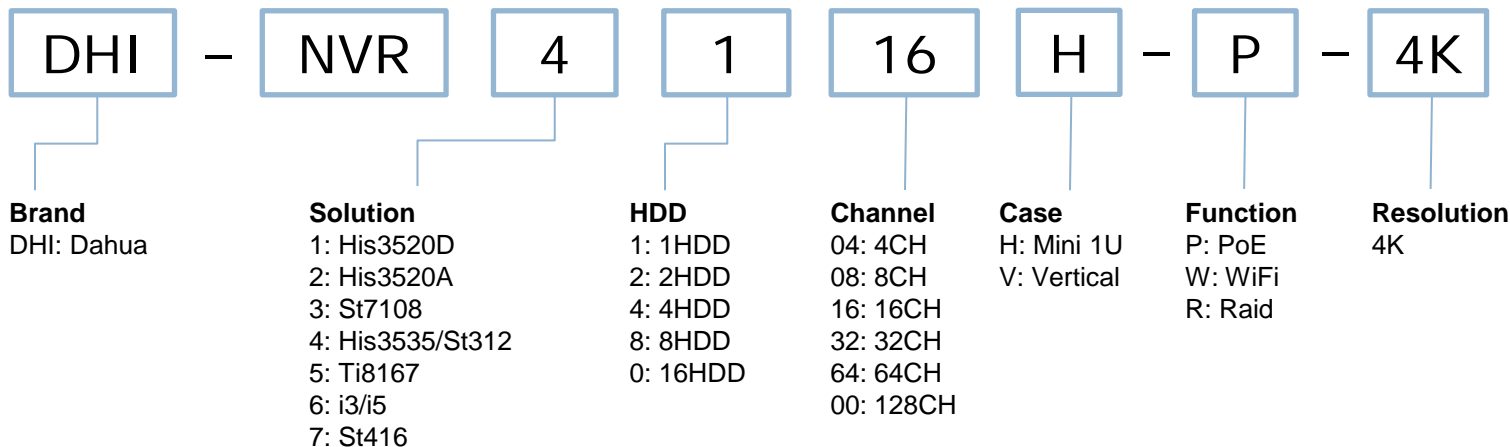




## NVR Product Lines Roadmap



## NVR name rule



# NVR



Beneficio NVR








Professional NVR

Super NVR

Highlights

# Beneficio



	Smart box 	Vertical 	Smart 1U 	Mini 1U 	1U 	1.5U 	2U 
4ch	NVR104 (-P)		NVR1104 NVR1104-P NVR4104 NVR4104-P	NVR1104H NVR1104H-P NVR4104H NVR4104H-P	NVR4204 NVR4204-P		
8ch	NVR108(-P)	NVR4208 V-8P	NVR1108 NVR1108-P NVR4108 NVR4108-P NVR4108-8P	NVR1108H NVR1108H-P NVR4108H NVR4108H-P NVR4108H-8P	NVR4208 NVR4208-P NVR4208-8P NVR4208-4K NVR4208-8P-4K	NVR4408 NVR4408-8P NVR4408-4K	NVR4808
16ch		NVR4216 V-8P	NVR4116 NVR4116-P NVR4116-8P	NVR4116H NVR4116H-P NVR4116H-8P	NVR4216 NVR4216-P NVR4216-8P NVR4216-8P-4K NVR4216-4K	NVR4416 NVR4416-8P NVR4416-16P NVR4416-4K NVR4416-16P-4K	NVR4816 NVR4816-16P
32ch		NVR4232 V-8P			NVR4232 NVR4232-P NVR4232-8P NVR4232-4K NVR4232-8P-4K	NVR4432 NVR4432-8P NVR4432-16P NVR4432-4K NVR4432-16P-4K	NVR4832 NVR4832-16P

## ■ NVR4000-4K



**4K** real-time live view

**2 HDD**

NVR4208/16/32-4K

NVR4208/16/32-8P-4K

**4 HDD**

NVR4408/16/32-4K

NVR4416/32-16P-4K

**8 HDD**

NVR4808/16/32-4K

NVR4816/32-16P-4K

- 8/16/32ch IPC Input
- 256Mbps incoming bandwidth
- 4K realtime
- Support 4ch 4K@6fps
- With 8/16PoE

## ■ NVR4000

1 HDD

2 HDD

4 HDD

8 HDD



- 4/8/16/32ch IPC Input
- 80/200Mbps incoming bandwidth
- 4ch 1080P decoding
- Support 5Mp
- With 4/8/16PoE

## ■ NVR4104-W



- 4ch IPC Input
- 80Mbps incoming bandwidth
- 4ch 1080P decoding
- Support 5Mp
- WIFI-WPS

## ■ NVR4200V-8P



- Up to 32ch IPC Input
- 200Mbps incoming bandwidth
- 4ch 1080P decoding
- Support 5Mp
- 8 POE ports
- Single power supply



# Beneficio

## ■ NVR1000



4 channel **720P** real-time live view

1 HDD



- 4/8ch IPC Input
- 56Mbps incoming bandwidth
- 4ch 720P decoding
- **Support 1080P**
- **With 4PoE**

# NVR








Beneficio NVR

Professional NVR

Super NVR

Highlights

	1U	1.5U	2U	2U	3U
					
8ch	NVR5208 NVR5208-8P NVR7208 NVR7208-8P	NVR5408 NVR5408-8P NVR7408 NVR7408-8P	NVR5808 NVR5808-8P	NVR7808	NVR7808-RH
16ch	NVR5216 NVR5216-8P NVR7216 NVR7216-8P	NVR5416 NVR5416-8P NVR5416-16P NVR7416 NVR7416-16P	NVR5816 NVR5816-8P	NVR7816 NVR7816-16P	NVR7816-RH
32ch	NVR5232 NVR5232-8P NVR7232 NVR7232-8P	NVR5432 NVR5432-8P NVR5432-16P NVR7432 NVR7432-16P	NVR5832 NVR5832-8P	NVR7832 NVR7832-16P NVR7032 NVR7032-R	NVR5032 NVR7832-RH
64ch	NVR7264 NVR7264-8P	NVR7464 NVR7464-16P		NVR7864 NVR7864-16P NVR7064 NVR7064-R	NVR7864-RH

## ■ NVR7000 Series



8 channel 1080P real-time live view

2 HDDs

4 HDDs

8 HDDs

16 HDDs



- 8/16/32/64ch IPC Input
- 256Mbps Incoming bandwidth
- 8ch 1080P decoding
- Support RAID 0/1/5/6/10 (-RH/R)
- With 8/16PoE

# NVR



Beneficio NVR

Professional NVR

Super NVR

Highlights

# Super NVR



			
64ch	NVR608-64-4K NVR608R-64-4K	NVR616-64-4K NVR616D-64-4K NVR616R-64-4K NVR616DR-64-4K NVR6064 NVR6064D NVR6064DR	
128ch	NVR608-128-4K NVR608R-128-4K	NVR616-128-4K NVR616D-128-4K NVR616R-128-4K NVR616DR-128-4K NVR6000 NVR6000D NVR6000DR	
256ch			NVR724-256 NVR724R-256 NVR724D-256 NVR724DR-256



# Super NVR



## ■ NVR600-4K Series



**4K** real-time live view

8 HDDs



16 HDDs

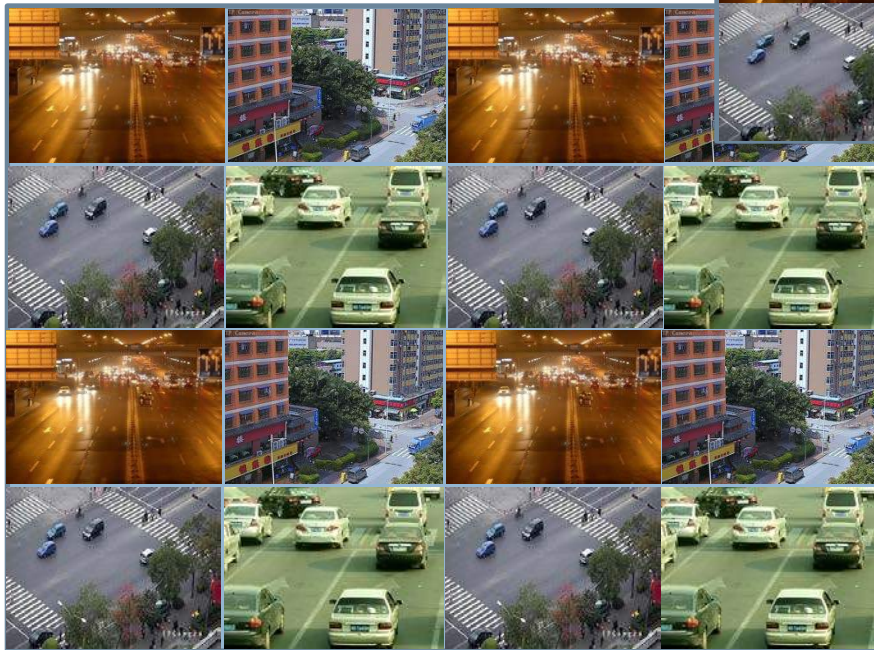


- 64/128ch IPC Input
- 384Mbps Incoming bandwidth
- 4ch 4K real time decoding
- IVS & Face detection
- Support RAID 0/1/5/6/10/50/60
- Redundant power (optional)
- Mini SAS (optional)
- Optical Fiber Interface (optional)

# Super NVR



## ■ NVR724-256 Series



24 HDDs



20 channel 1080P real-time live view

- 256ch IPC Input
- 512Mbps Incoming bandwidth
- 8Mp decoding
- Support RAID 0/1/5/6/10/50/60
- Redundant power (optional)
- 2 Mini SAS
- iSCSI
- N+M



# NVR



Beneficio NVR

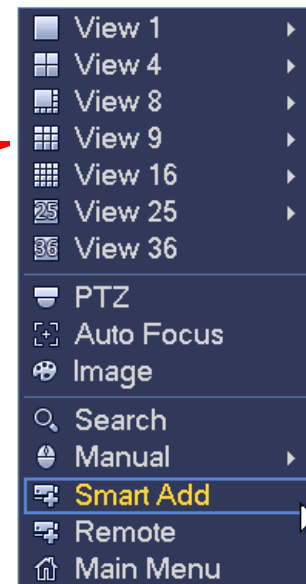
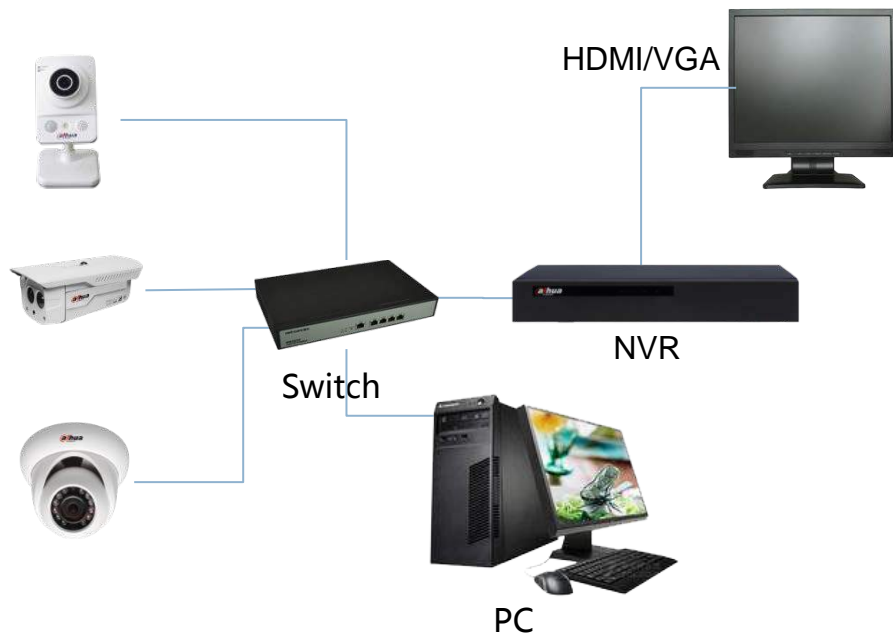
Professional NVR

Super NVR

Highlights

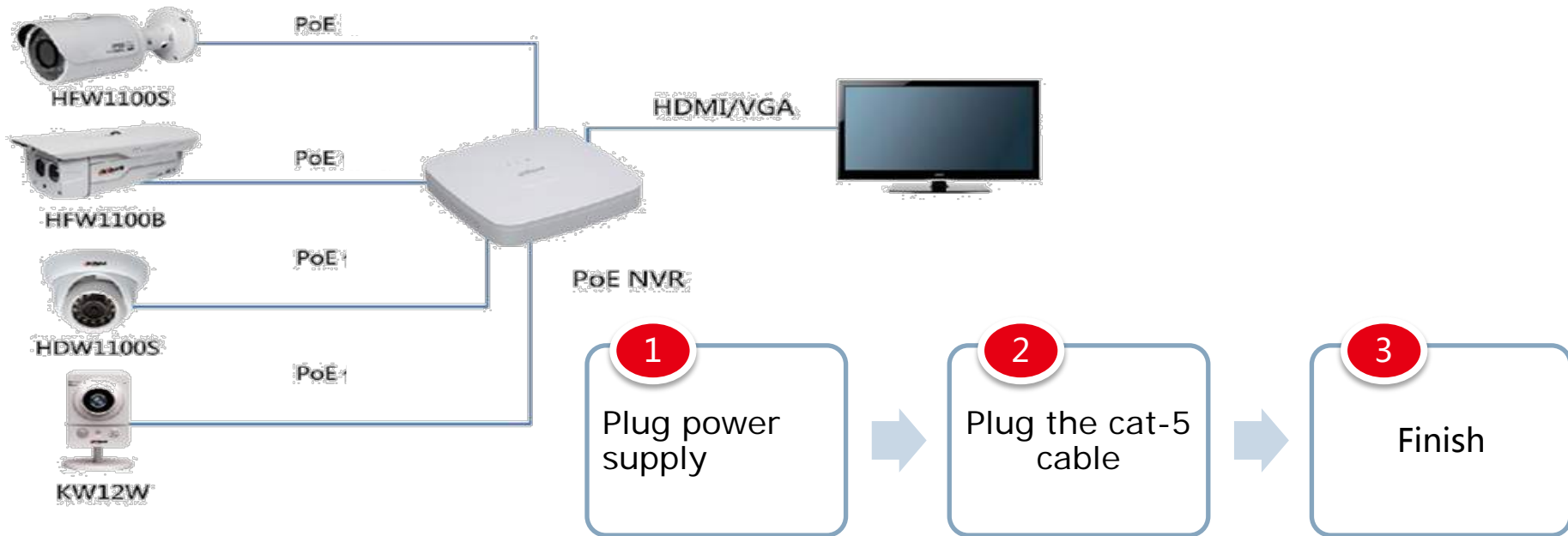
# Highlights | Smart Add

- Add the IPC and NVR in the same router
- Click Smart Add, the IPC will be added automatically



# Highlights | PoE+

- ◆ Support PoE+, Max 25.5W output for one port
- ◆ Support power the bullet camera & speed dome by NVR
- ◆ Plug & play, easy to install the system



# Highlights | P2P

- ◆ Support P2P, make the home care easier
- ◆ Support QR code scan, easy to login the device
- ◆ No DDNS setting, no port mapping, just scan and play

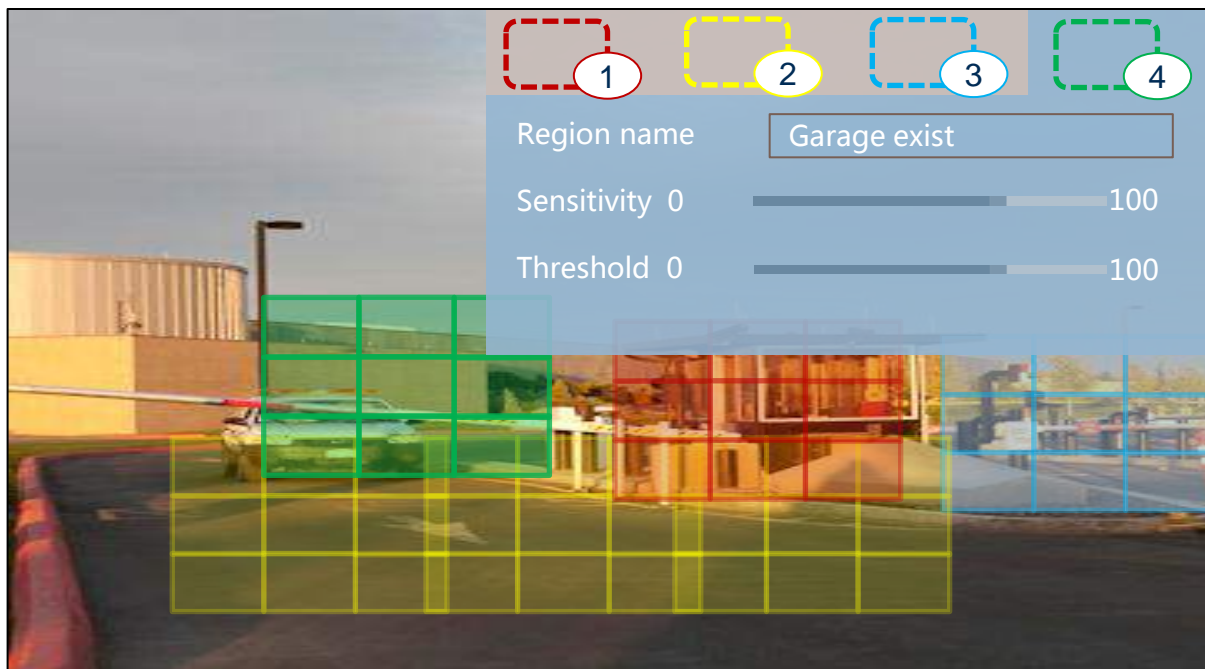


3 step to login, easy & convenient



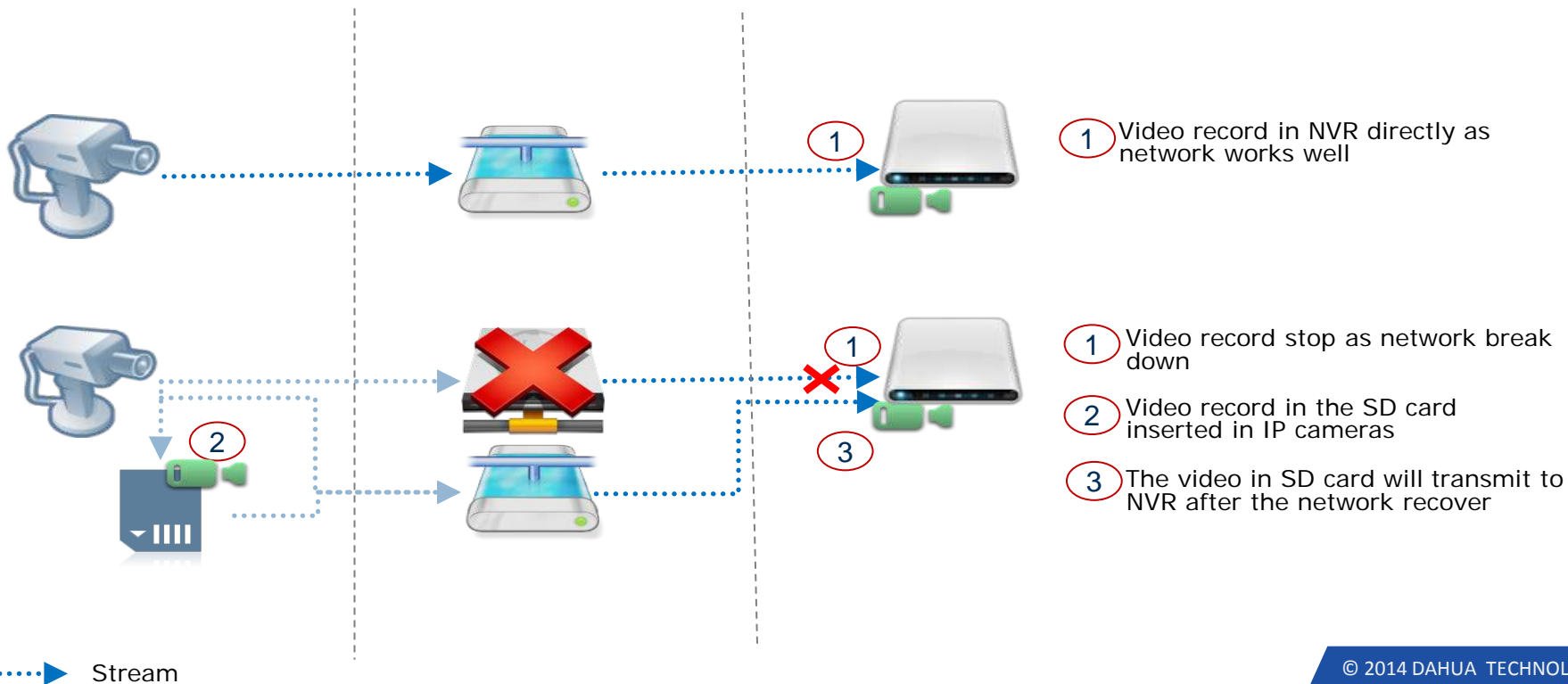
# Highlights | Multi MD region

- ◆ More accurate: Motion detection sensitivity up to 100 level
- ◆ More flexible: Different sensitivity can be set for different motion detection region
- ◆ More intuition: Support editing the region name



# Highlights | ANR

◆ ANR (Automatic Network Replenishment Technology): Video record in SD card in the IP cameras when the network breaks down, and the video will be transmit and record in NVR when network recovered



# Highlights | MAC Search

How to distinguish different IP cameras with the same default IP ?

Auto search

IP

MAC

Connected

Manually add

IP

MAC

Protocol config

Know the MAC only



IP

Port

MAC

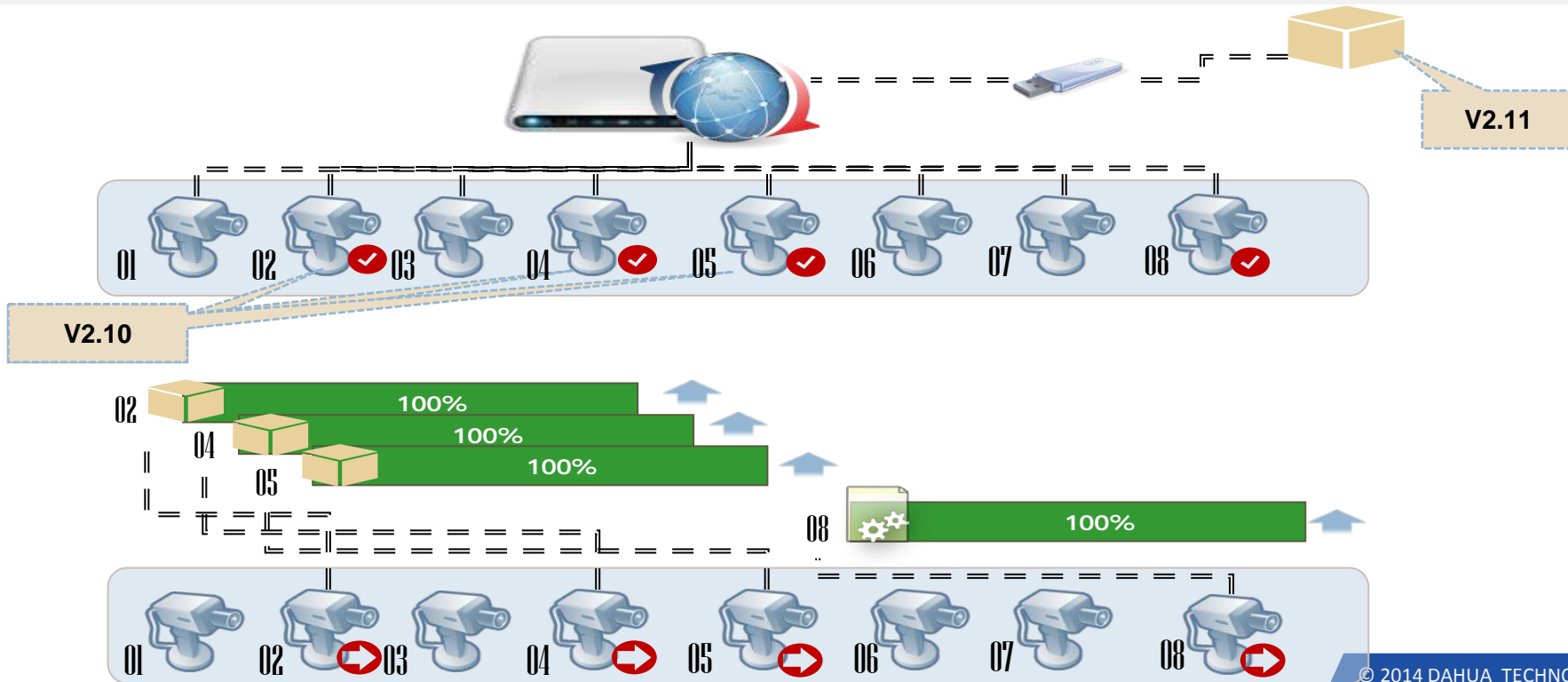
Device name

Manufacturer

Type

# Highlights | IPC upgrading

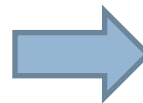
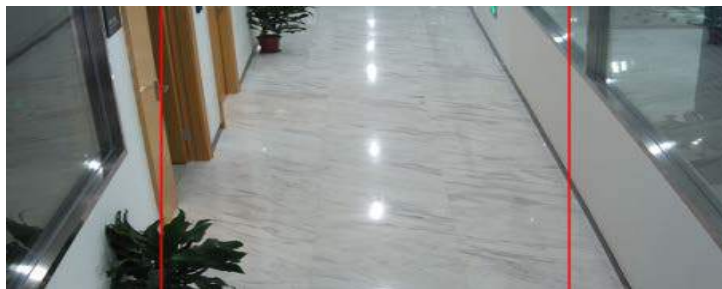
◆ IPC Upgrading: Upgrading multiple IP cameras from NVR at the same time, make the system maintenance easier & more convenient





# Highlights | Corridor mode

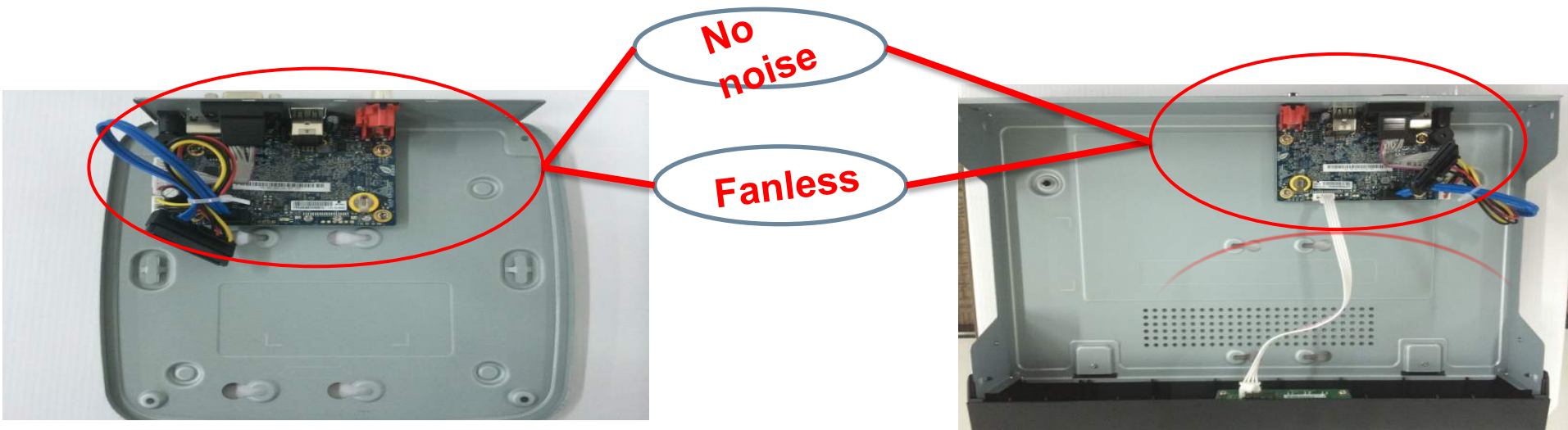
◆ Support rotating picture for 90°, expand the monitoring range to satisfy the vertical occasion, such as aisle, tunnel and etc. So the cost is cut down.



# Highlights | Low power consumption & No Noise

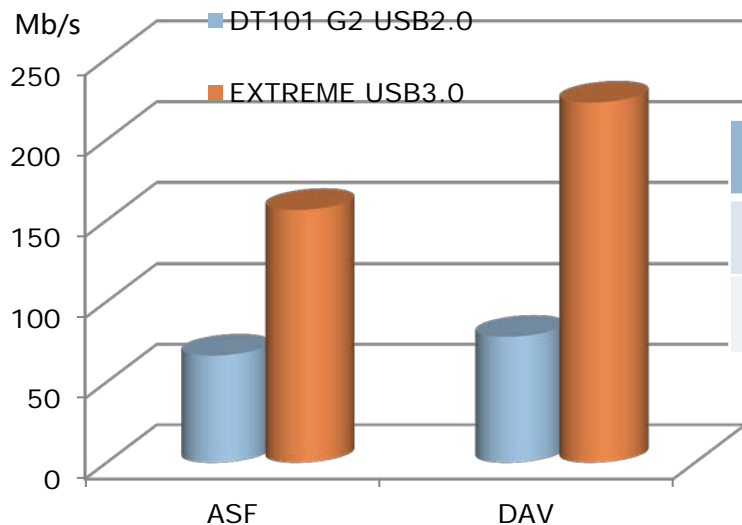


- ◆ Power consumption: Less than 10W (Without HDD)
- ◆ No noise: Fanless design with good cooling performance



- ◆ Support USB3.0: Higher data transmission rate than USB2.0, Compatible with USB2.0

## USB3.0 V.S. USB2.0



Brand	Model	Capacity	Data size	Transmission rate
KINGSTON	DT101 G2 USB2.0	16G	33152KB 153344KB	ASF:66.45Mb/s DAV:78.14Mb/s
KINGSTON	EXTREME USB3.0	16G	33152KB 153344KB	ASF:156.39Mb/s DAV:222.92Mb/s

# Highlights | Quality & Compatibility





***Dahua Technology  
Make Your Life Safer***