



PURE WOOL FROM THE ISLE OF PURBECK

Cow Road

An exclusive design by ClaireInStitches for Isle Yarns



Inspired by rural running routes this hat has been designed to fit close to keep you warm, and stay in place, whilst running, walking or generally being active. The beautiful Isle Yarn gives the lace repeat great definition and the DK weight makes it a quick knit.

Materials

1 hank Isle Yarns DK 100% Poll Dorset Wool - 220m/238yds per 100g skein

3.5mm/US4 circular needle 40cm/ 16in length or DPNs

4mm/US6 circular needle 40cm/16in length or DPNs

4mm/US6 set of DPNs for crown decreases

Stitch marker & a needle for sewing in ends

Gauge (not essential for this pattern)

22 stitches and 36 rounds over 10cm /4in of 2 x 2 rib worked in the round and blocked, using 3.5mm/ US4 needles

23 stitches and 34 rounds over 10cm /4in of lace pattern worked in the round and blocked, using 4mm/US6 needles

Sizes

S, (M, L) To fit head circumference: 45 - 50 (50 - 55, 55 - 60) cm / 18 - 20 (20 - 22, 22 - 24) inches. Circumference (before blocking): 42 (46, 50) cm/16.5 (18, 19.75) inches

Abbreviations

k knit

p purl

rnd round

rpt repeat

k2tog knit two stitches together

ssk slip 2 stitches individually as if to knit & knit together through back loops

YO yarn over

DPNs double pointed needles

Techniques & Support

Old Norwegian Cast on -
<https://www.youtube.com/watch?v=bZVZnt7F7MY>

Pattern support via claireinstitches Ravelry group, 'Cow Road Pattern Support' discussion board

Brim

Using 3.5mm / US4 needles and Old Norwegian Cast On, CO 88 (96, 104) stitches (I used the Old Norwegian Cast On for a stretchy brim or go up a needle size for the same result).

Join to work in the round and ensure you don't twist the stitches. Place a stitch marker to mark start of round.

Rnd 1: *k2, p2; repeat from * to end of round

Repeat Rnd 1 a further 9 times (this gives me a 3.5cm brim)

Body

Change to 4mm / US6 needles

Work Body Chart or written instructions twice

Work Body Chart or written instructions for Rounds 1 – 8 once more.

Crown

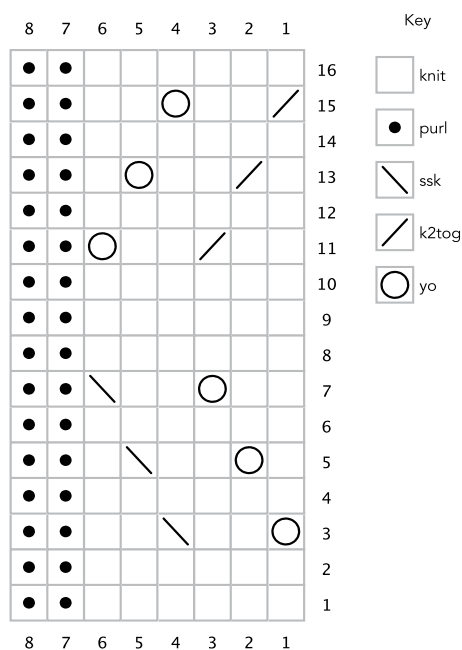
Work Crown Chart or written instructions once.

Finishing

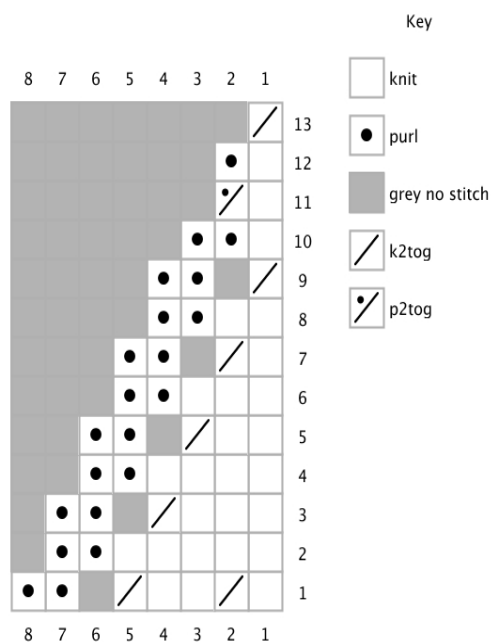
Break yarn & draw through remaining stitches. Weave in ends.

Wet block hat and dry over a balloon. Take care not to stretch the hat, and especially the brim, too much when blocking. My top tip is to blow up the balloon inside the hat to avoid overstretching.

Body Chart



Crown Chart



Body Written Instructions

Rnd 1: *k6, p2. Rpt from * to end
 Rnd 2: *k6, p2. Rpt from * to end
 Rnd 3: *YO, k2, ssk, k2, p2. Rpt from * to end
 Rnd 4: *k6, p2. Rpt from * to end
 Rnd 5: *k1, YO, k2, ssk, k1, p2. Rpt from * to end
 Rnd 6: *k6, p2. Rpt from * to end
 Rnd 7: *k2, YO, k2, ssk, p2. Rpt from * to end
 Rnd 8: *k6, p2. Rpt from * to end
 Rnd 9: *k6, p2. Rpt from * to end
 Rnd 10: *k6, p2. Rpt from * to end
 Rnd 11: *k2, k2tog, k2, YO, p2. Rpt from * to end
 Rnd 12: *k6, p2. Rpt from * to end
 Rnd 13: *k1, k2tog, k2, YO, k1, p2. Rpt from * to end
 Rnd 14: *k6, p2. Rpt from * to end
 Rnd 15: *k2tog, k2, YO, k2, p2. Rpt from * to end
 Rnd 16: *k6, p2. Rpt from * to end

Crown Written Instructions

Rnd 1: *k4, k2tog, p2. Rpt from * to end (7 sts)
 Rnd 2: *k5, p2. Rpt from * to end
 Rnd 3: *k3, k2tog, p2. Rpt from * to end (6 sts)
 Rnd 4: *k4, p2. Rpt from * to end
 Rnd 5: *k2, k2tog, p2. Rpt from * to end (5 sts)
 Rnd 6: *k3, p2. Rpt from * to end
 Rnd 7: *k1, k2tog, p2. Rpt from * to end (4 sts)
 Rnd 8: *k2, p2. Rpt from * to end
 Rnd 9: *k2tog, p2. Rpt from * to end (3 sts)
 Rnd 10: *k1, p2. Rpt from * to end
 Rnd 11: *k1, p2tog. Rpt from * to end
 Rnd 12: *k1, p1. Rpt from * to end
 Rnd 13: *k2tog. Rpt from * to end