

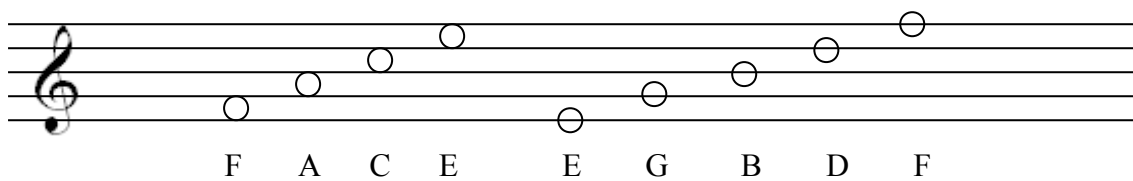
## READING MUSIC

### The notes on the staff:

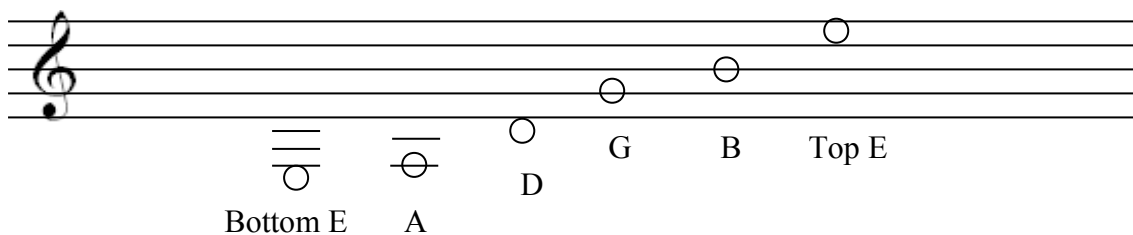
The staff (or staff) is the five lines on which the notes are written.

Notes are also known as pitches – the note letter names are shown under each note.

The curly symbol is a treble clef.



### Where the guitar strings would be on and below the staff:



### Note durations:



**QUAVER (EIGHTH NOTE)** – HALF A CROTCHET – in 4/4 time this is **half a beat**



**CROTCHET (QUARTER NOTE)** – HALF A MINIM – in 4/4 time this lasts for **1 beat**



**MINIM (HALF NOTE)** – HALF A SEMIBREVE – in 4/4 time this lasts for **2 beats**



**DOTTED MINIM (DOTTED HALF NOTE)** – ONE AND A HALF MINIMS – in 4/4 time this lasts for **3 beats**



**SEMIBREVE (WHOLE NOTE)** – in 4/4 time this lasts for **4 beats**