

# Certificate of Analysis:

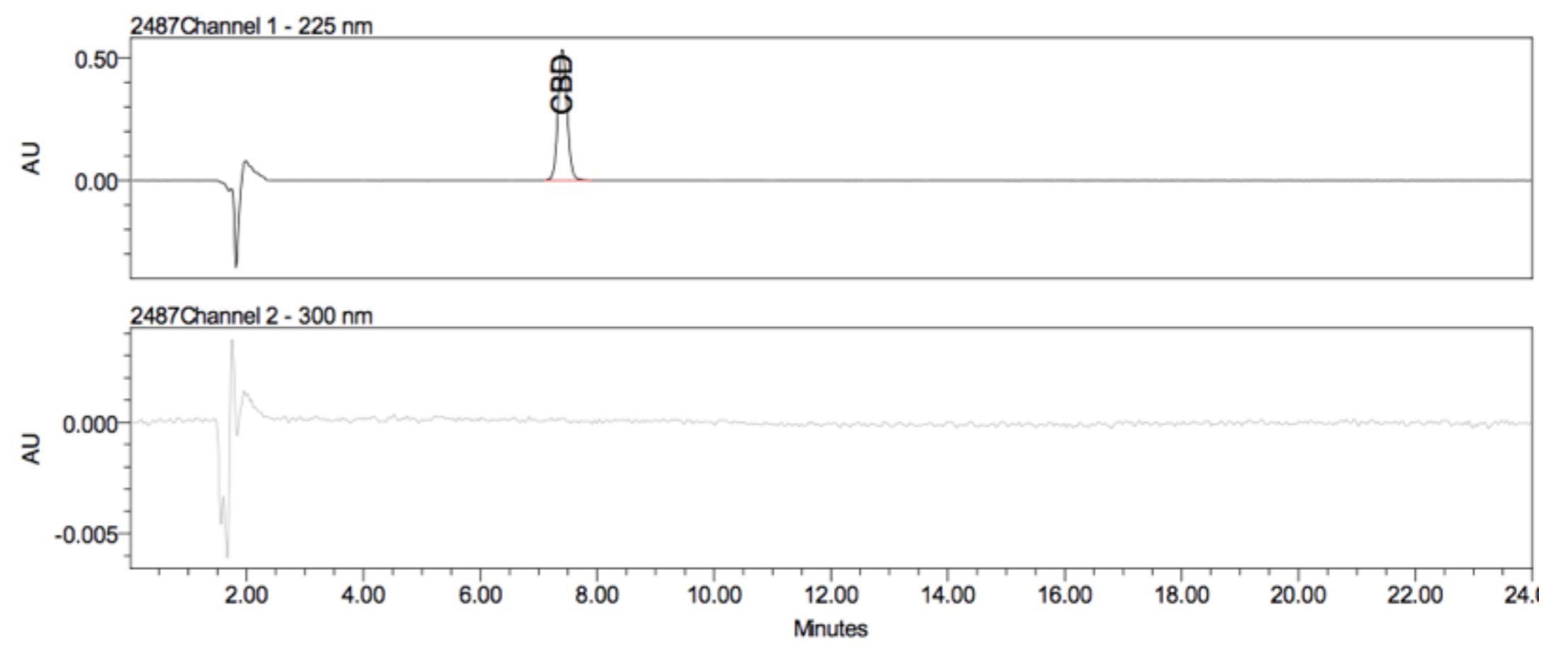
Responsible Supervisor:	Martin V.
Sample	Batch# 1142
Date samples received:	23-October 2018
Date analysis began:	23-October 2018
Date sample report produced:	23-October 2018
ID Number when available:	
Sample Mass	1 g

## Total CBD 98.82% Cannabinoid Profile:

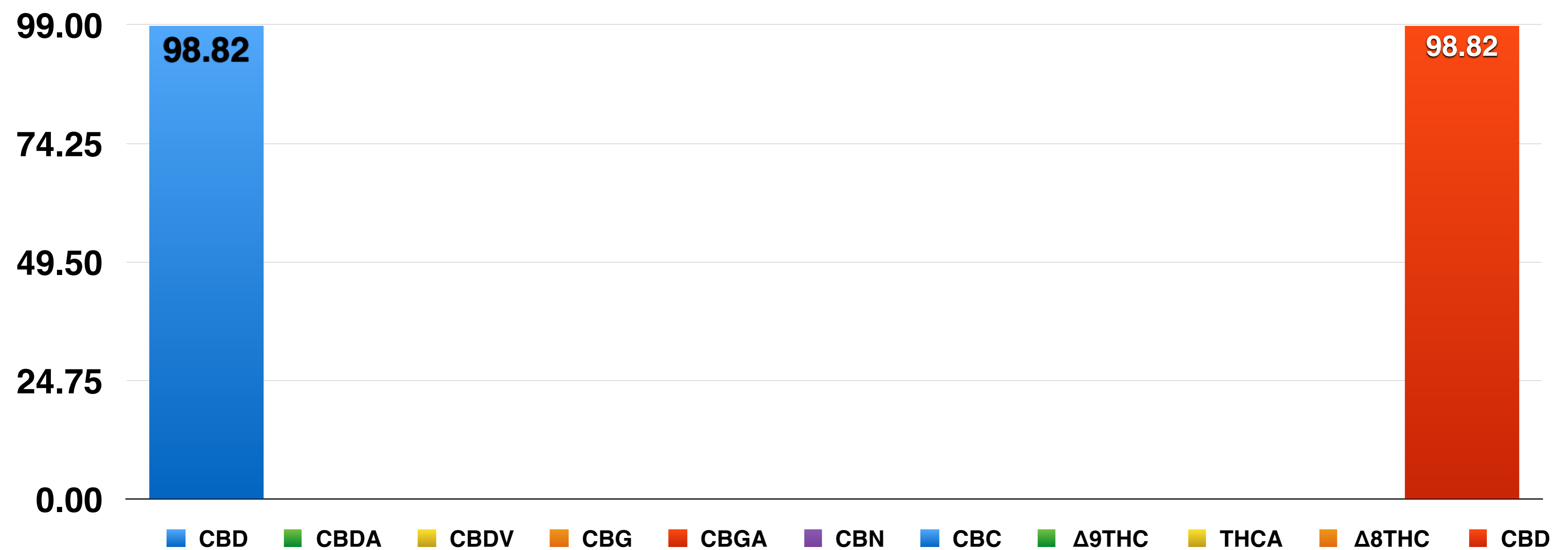
Component	Mass (%)	Amount (mg/g)
CBD	98.82	988.20
CBDA	<0.01	<0.10
CBDV	<0.01	<0.10
CBG	<0.01	<0.10
CBGA	<0.01	<0.10
CBN	<0.01	<0.10
CBC	<0.01	<0.10
Δ9THC	N.D.	N.D.
THCA	N.D.	N.D.
Δ8THC	N.D.	N.D.
CBD	98.82	988.20

N.D. - Not detected

## HPLC Chromatogram



## Cannabinoids as Percent of Total Mass



# Certificate of Analysis:

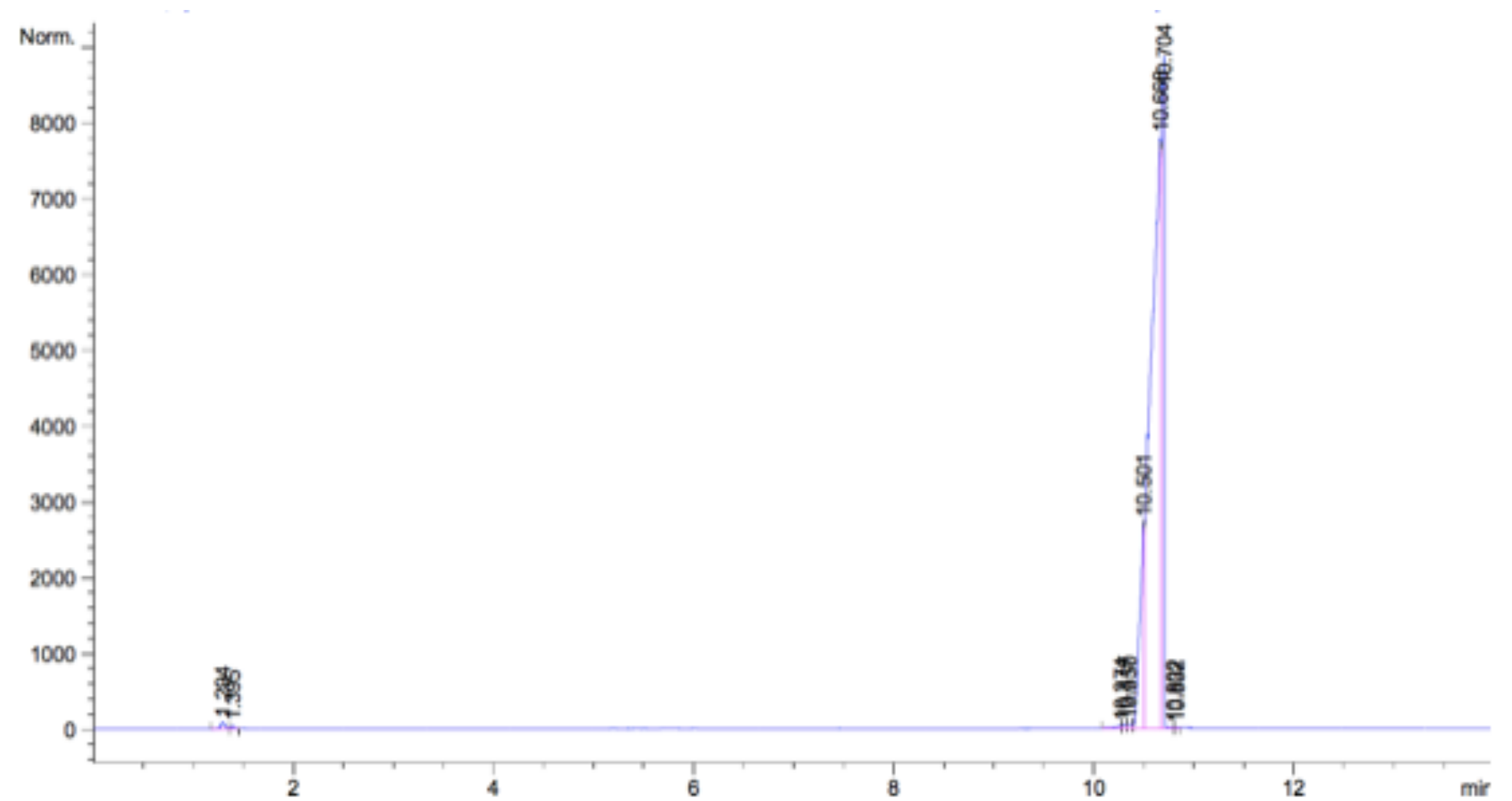
Responsible Supervisor:	<u>Martin V.</u>
Sample	<u>Batch# 1142</u>
Date samples received:	<u>23-October 2018</u>
Date analysis began:	<u>23-October 2018</u>
Date sample report produced:	<u>23-October 2018</u>
ID Number when available:	<u></u>
Sample Mass	<u>1 g</u>

**Total CBD 98.82%**  
**Terpenoid Profile:**

Component	Amount %
β-Caryophyllene	ND
α-Humulene	ND
Caryophyllene oxide	ND
Myrcene	ND
α-Pinene	ND
Terpinolene	ND
Humulene epoxide II	ND
Limonene	ND
β-Pinene	ND
E-β-Ocimene	ND
Sabinene	ND
Linalool	ND

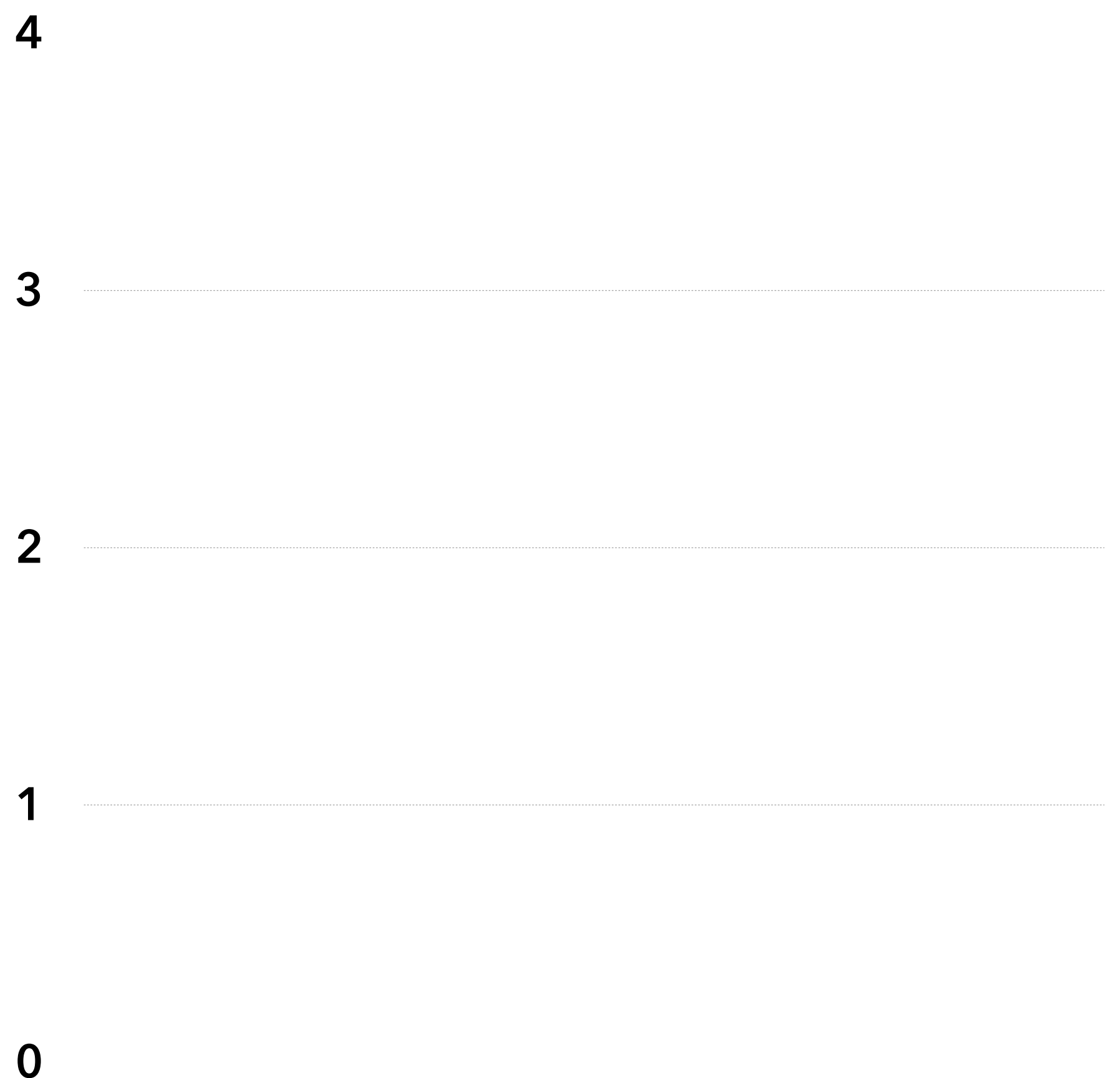
ND - Not Detected

## GC-MS Chromatogram



## Terpenoid Distribution

- β-Caryophyllene
- α-Humulene
- Caryophyllene oxide
- Myrcene
- α-Pinene
- Terpinolene
- Humulene epoxide II
- Limonene
- β-Pinene
- E-β-Ocimene
- Sabinene
- Linalool



# Certificate of Analysis:

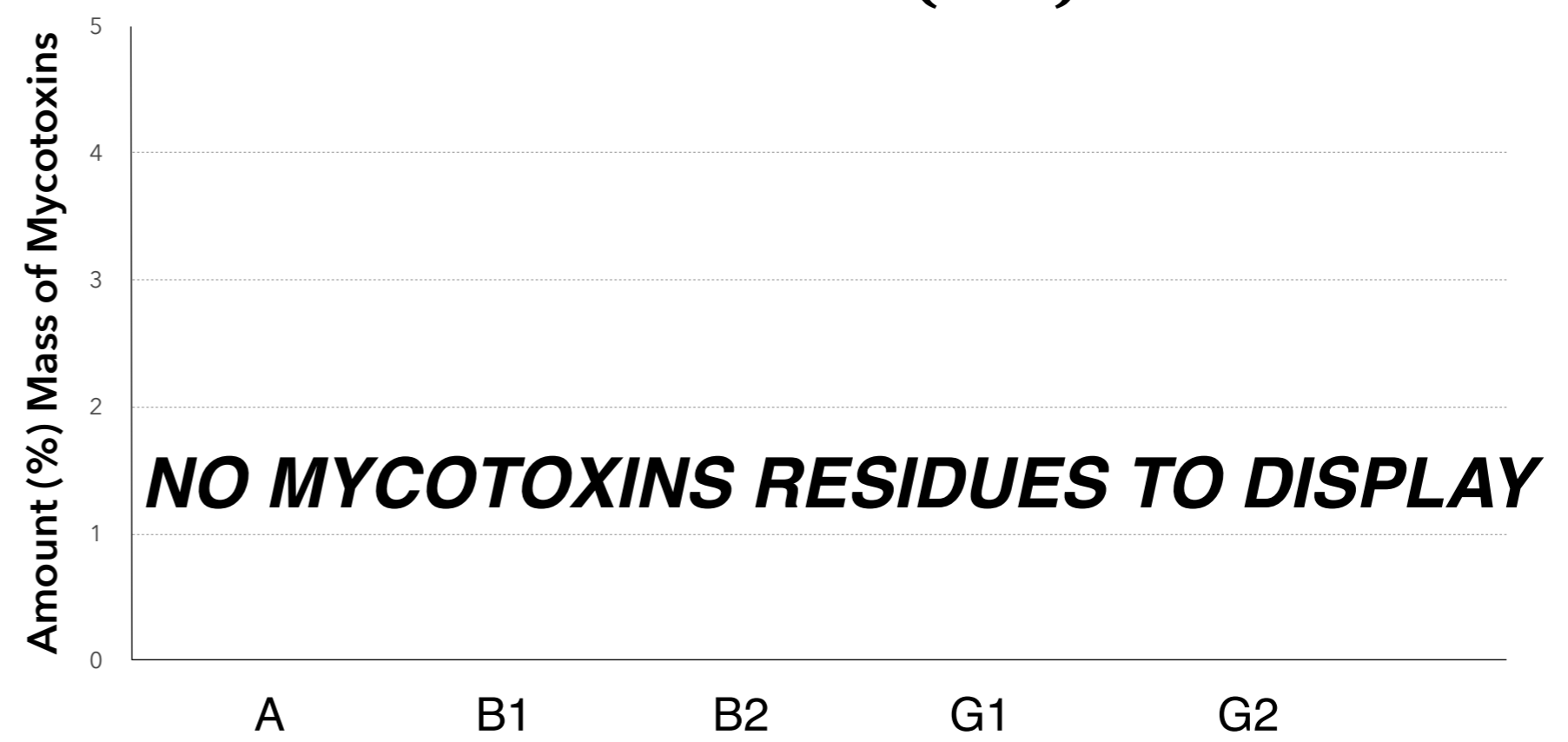
Responsible Supervisor:	<u>Martin V.</u>
Sample	<u>Batch# 1142</u>
Date samples received:	<u>23-October 2018</u>
Date analysis began:	<u>23-October 2018</u>
Date sample report produced:	<u>23-October 2018</u>
ID Number when available:	<u></u>
Sample Mass	<u>1 g</u>

**Total CBD 98.82%**  
**Microbial Profile:**

Component	Results
<i>Listeria m.</i>	1 g ND*
<i>Escherichia c.</i>	1 g ND*
<i>Salmonella</i>	25 g ND*
Yeast	1 g ND*
Mould	1 g ND*

\*ND - Not detected

**All Mycotoxins at  
 Non Detectable (ND) levels**



## Nutrition Facts

Component	%
Moisture and volatile matter content	ND*
Protein content	ND*
Total fat content	ND*
Carbohydrates content	ND*
Total Fiber content	ND*
Total sugars content	ND*
Total ash content	ND*

\*ND - Not detected

# Certificate of Analysis:

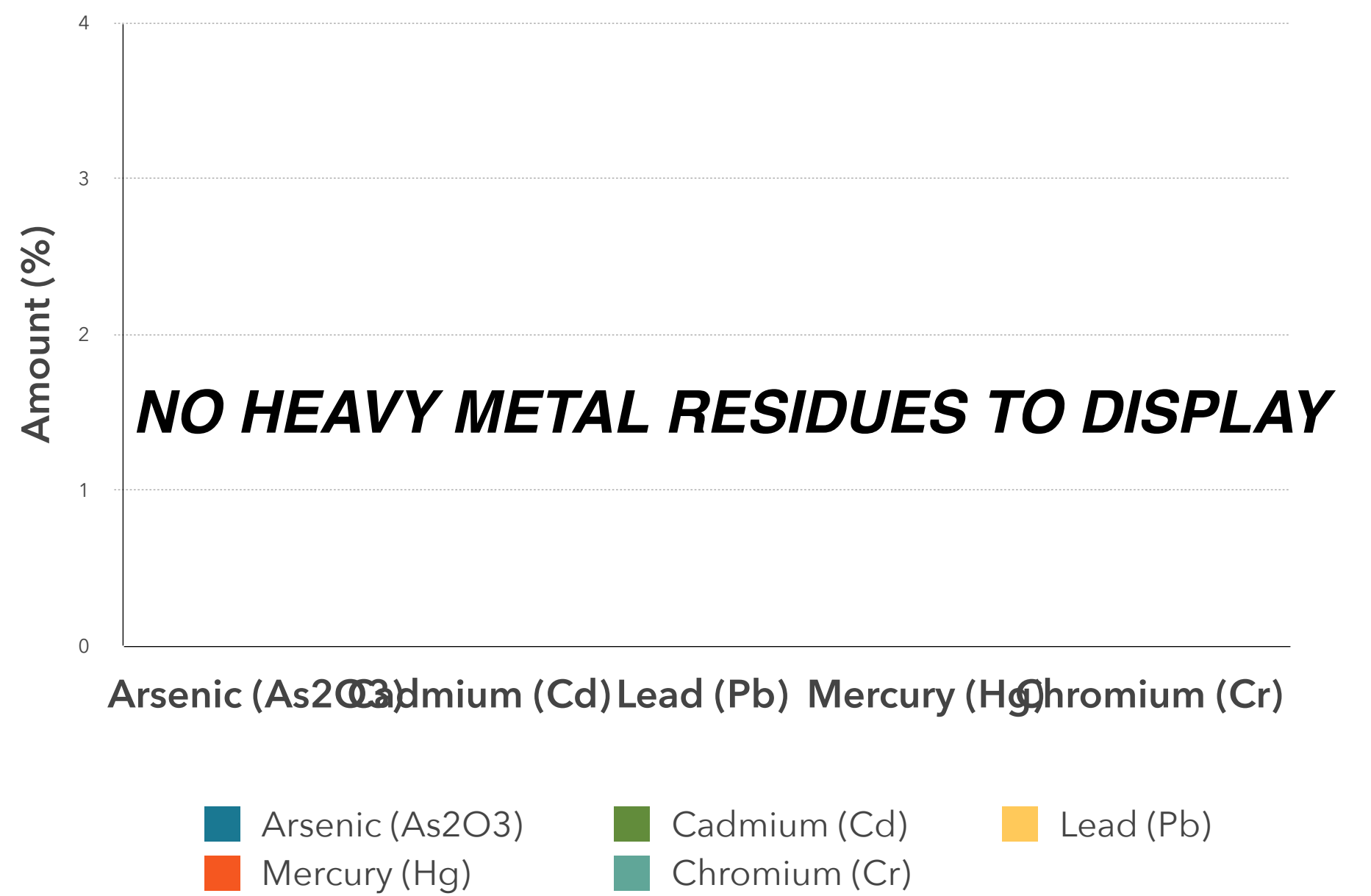
Responsible Supervisor:	<u>Martin V.</u>
Sample	<u>Batch# 1142</u>
Date samples received:	<u>23-October 2018</u>
Date analysis began:	<u>23-October 2018</u>
Date sample report produced:	<u>23-October 2018</u>
ID Number when available:	<u></u>
Sample Mass	<u>1 g</u>

**Total CBD 98.82%**  
**Heavy Metals Profile:**

Component	Mass (%)	Amount (ppm)	Limit** (ppm)
Arsenic (As <sub>2</sub> O <sub>3</sub> )	ND*	< 0.1	< 0.1
Cadmium (Cd)	ND*	< 0.1	< 0.1
Lead (Pb)	ND*	< 0.1	< 0.1
Mercury (Hg)	ND*	< 0.1	< 0.1
Chromium (Cr)	ND*	< 1	< 1
Tin (Sn)	ND*	< 10	< 10

\*ND - Not detected, \*\*Codex STAN 193-1995, GB 2762, EC No. 1881/2006, FDA

**All Heavy Metals at Non Detectable (ND) levels**



## Conclusions:

**No heavy metal residues detected.**

**No flammable residues detected.**

**No chemical residues detected.**