

Certificate of Analysis:

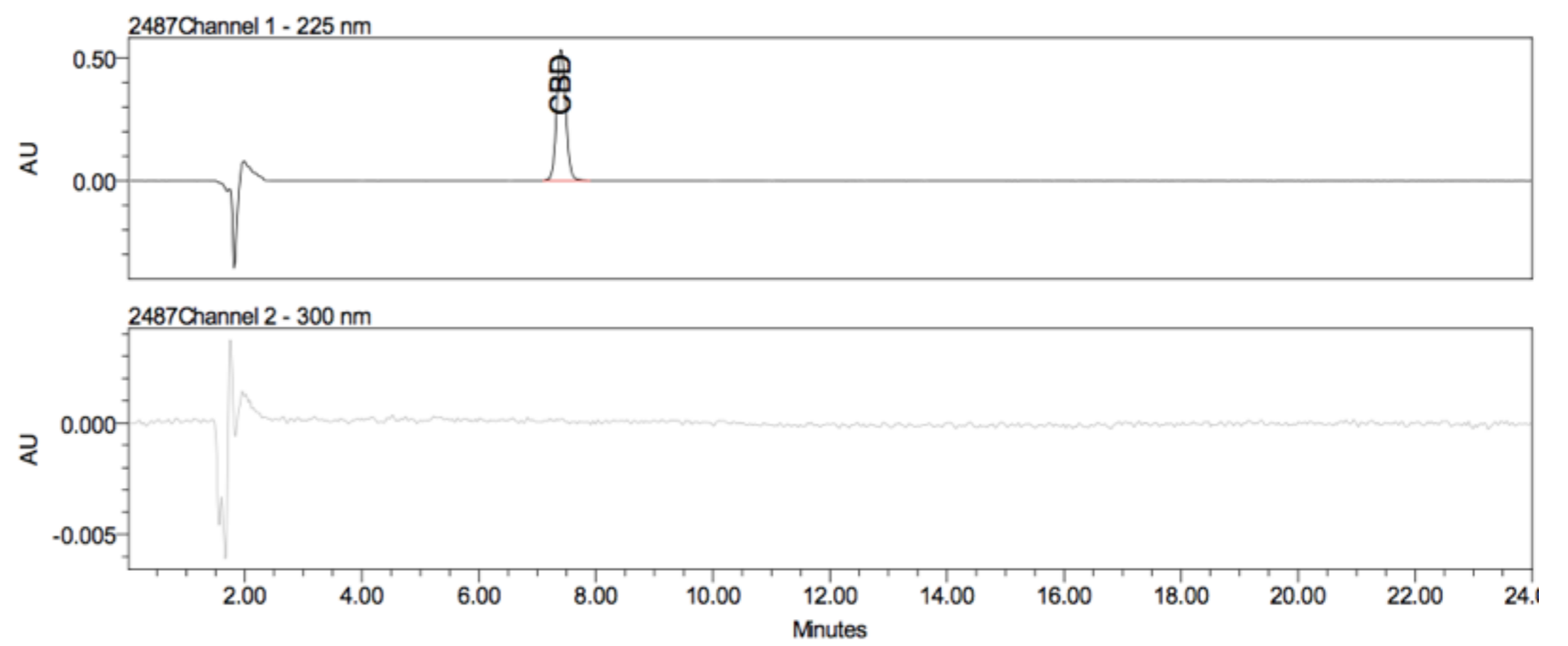
Responsible Supervisor:	Martin V.
Sample	Batch# 1231
Date samples received:	21-January 2019
Date analysis began:	21-January 2019
Date sample report produced:	24-January 2019
ID Number when available:	
Sample Mass	1 g

Total CBD 98.82% Cannabinoid Profile:

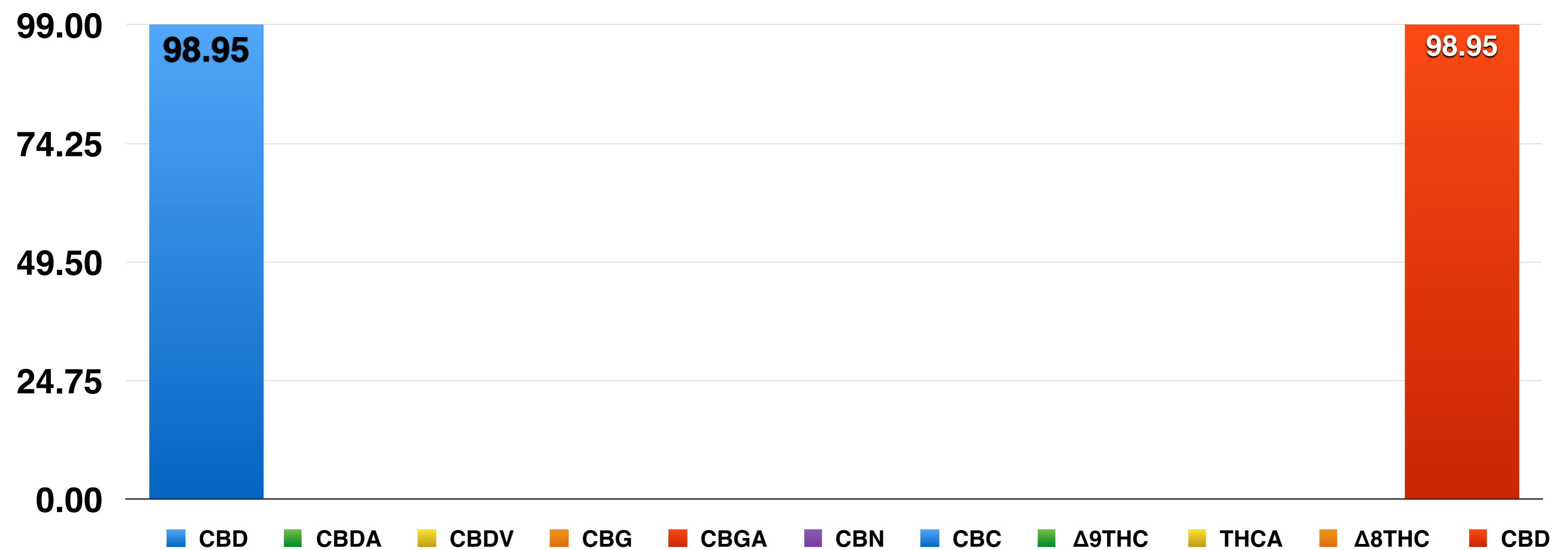
Component	Mass (%)	Amount (mg/g)
CBD	98.95	989.50
CBDA	<0.01	<0.10
CBDV	<0.01	<0.10
CBG	<0.01	<0.10
CBGA	<0.01	<0.10
CBN	<0.01	<0.10
CBC	<0.01	<0.10
Δ9THC	<0.01	<0.10
THCA	<0.01	<0.10
Δ8THC	<0.01	<0.10
CBD	98.95	989.50

N.D. - Not detected

HPLC-UV Analysis Method



Cannabinoids as Percent of Total Mass



Certificate of Analysis:

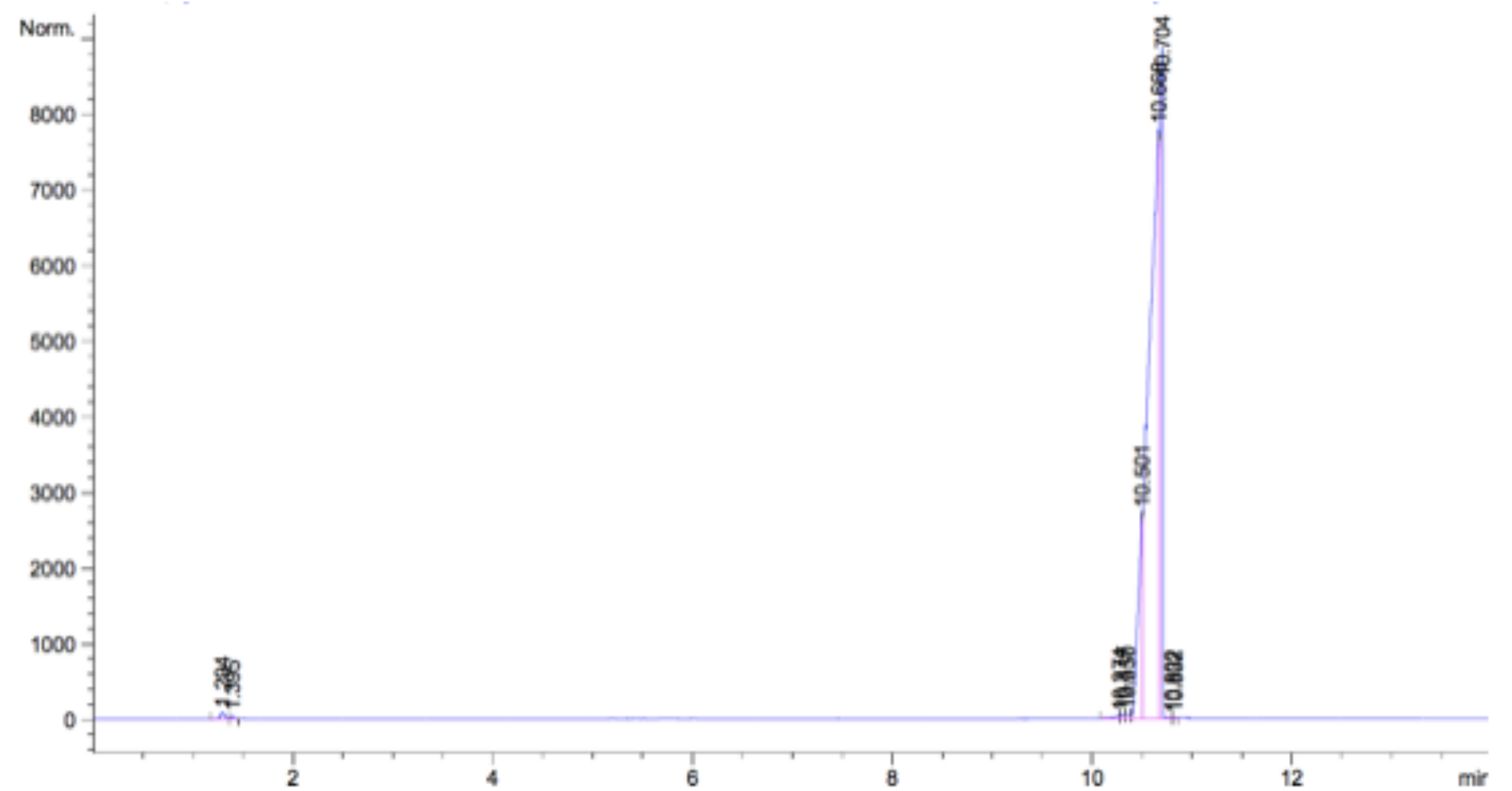
Responsible Supervisor:	<u>Martin V.</u>
Sample	<u>Batch# 1231</u>
Date samples received:	<u>21-January 2019</u>
Date analysis began:	<u>21-January 2019</u>
Date sample report produced:	<u>24-January 2019</u>
ID Number when available:	<u></u>
Sample Mass	<u>1 g</u>

Residual Solvents Profile:

Component	Amount %
Methanol	ND
Ethanol	ND
Hexane	ND
Ethylacetate	ND
Isopropanol	ND
Acetone	ND
Acetonitrile	ND
Toluene	ND
Dichlormethane	ND
Chloroform	ND
Ethylbenzene	ND
Xylene	ND

ND - Not Detected

HS-GC-FID Analysis Method



Terpenoid Distribution

- β-Caryophyllene
- α-Humulene
- Caryophyllene oxide
- Myrcene
- α-Pinene
- Terpinolene
- Humulene epoxide II
- Limonene
- β-Pinene
- E-β-Ocimene
- Sabinene
- Linalool

4

3

2

1

0

Certificate of Analysis:

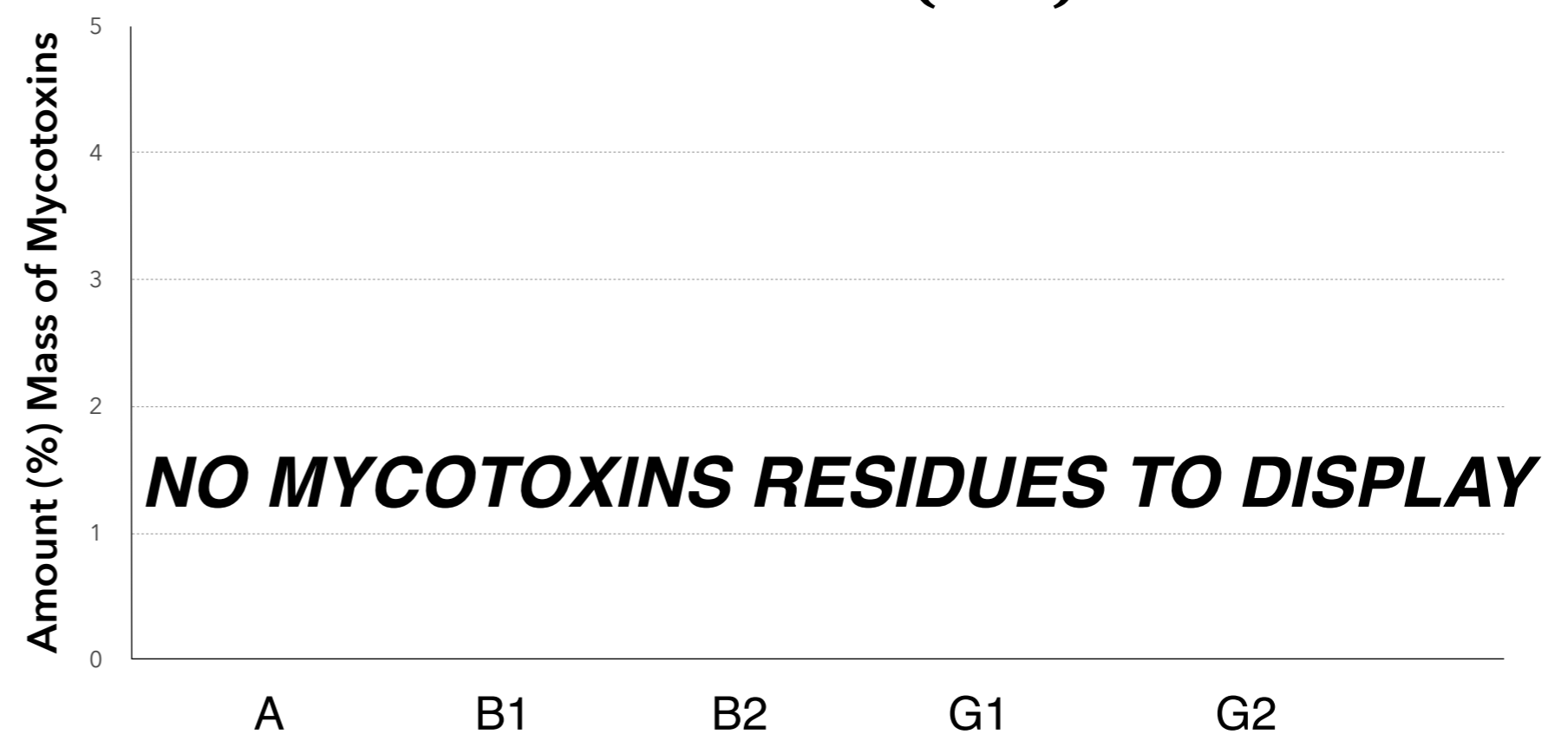
Responsible Supervisor:	Martin V.
Sample	Batch# 1231
Date samples received:	21-January 2019
Date analysis began:	21-January 2019
Date sample report produced:	24-January 2019
ID Number when available:	
Sample Mass	1 g

Microbial Profile:

Component	Results
<i>Listeria m.</i>	1 g ND*
<i>Escherichia c.</i>	1 g ND*
<i>Salmonella</i>	25 g ND*
Yeast	1 g ND*
Mould	1 g ND*

*ND - Not detected

All Mycotoxins at Non Detectable (ND) levels



Nutrition Facts

Component	%
Moisture and volatile matter content	ND*
Protein content	ND*
Total fat content	ND*
Carbohydrates content	ND*
Total Fiber content	ND*
Total sugars content	ND*
Total ash content	ND*

*ND - Not detected

Certificate of Analysis:

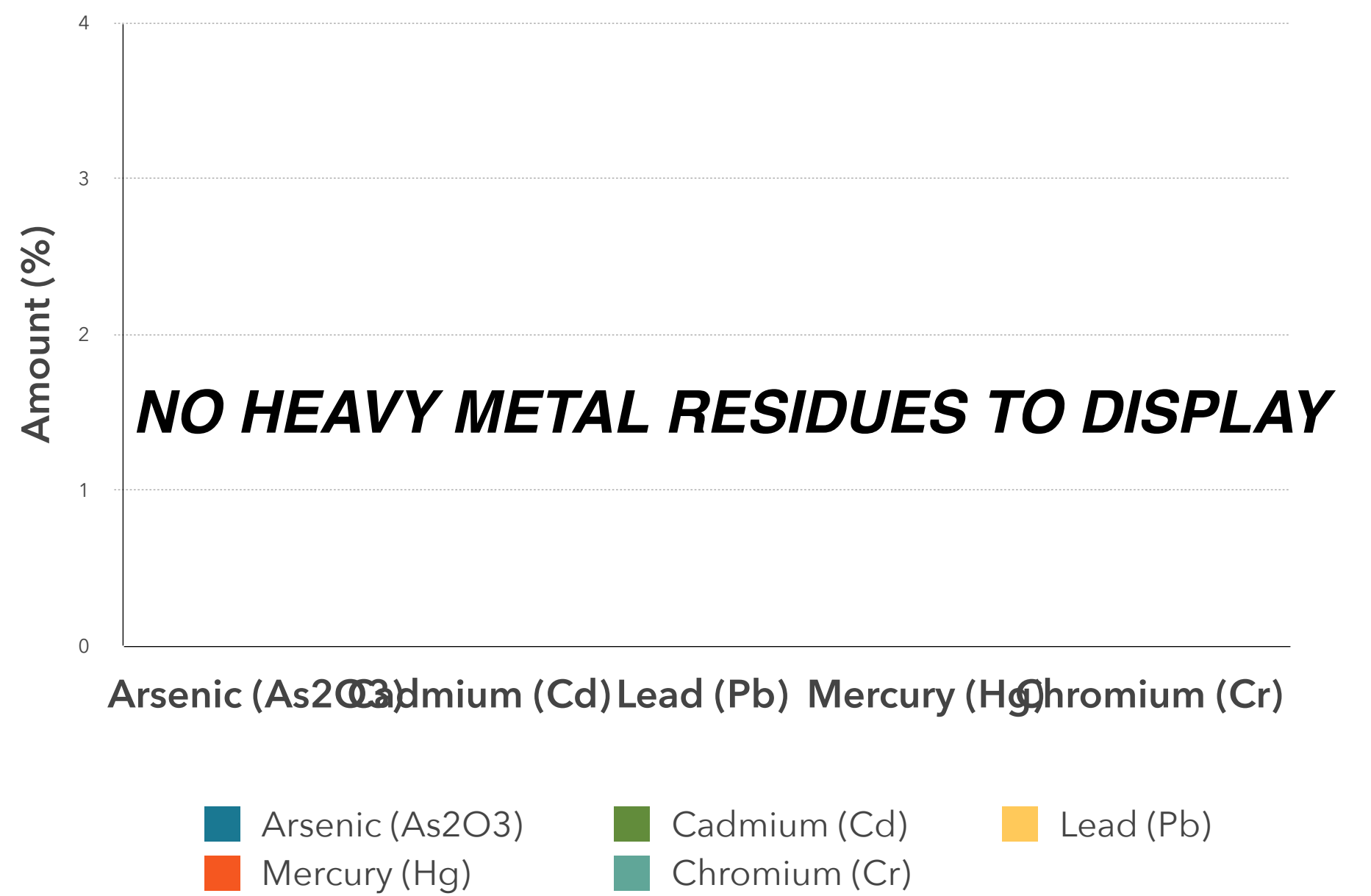
Responsible Supervisor:	<u>Martin V.</u>
Sample	<u>Batch# 1142</u>
Date samples received:	<u>23-October 2018</u>
Date analysis began:	<u>23-October 2018</u>
Date sample report produced:	<u>23-October 2018</u>
ID Number when available:	<u></u>
Sample Mass	<u>1 g</u>

Heavy Metals Profile:

Component	Mass (%)	Amount (ppm)	Limit** (ppm)
Arsenic (As ₂ O ₃)	ND*	< 0.1	< 0.1
Cadmium (Cd)	ND*	< 0.1	< 0.1
Lead (Pb)	ND*	< 0.1	< 0.1
Mercury (Hg)	ND*	< 0.1	< 0.1
Chromium (Cr)	ND*	< 1	< 1
Tin (Sn)	ND*	< 10	< 10

*ND - Not detected, **Codex STAN 193-1995, GB 2762, EC No. 1881/2006, FDA

All Heavy Metals at Non Detectable (ND) levels



Conclusions:

No heavy metal residues detected.

No flammable residues detected.

No chemical residues detected.