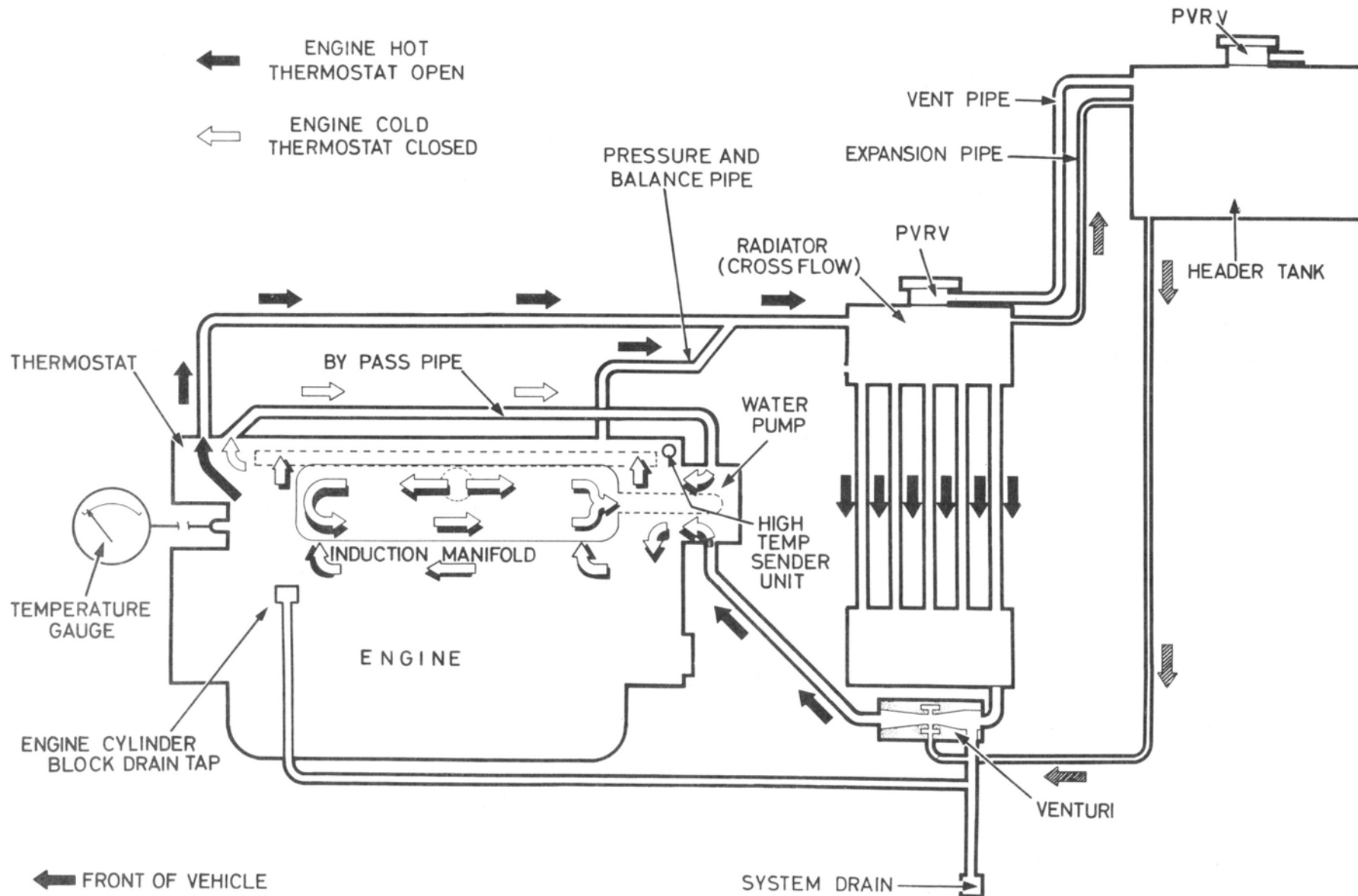
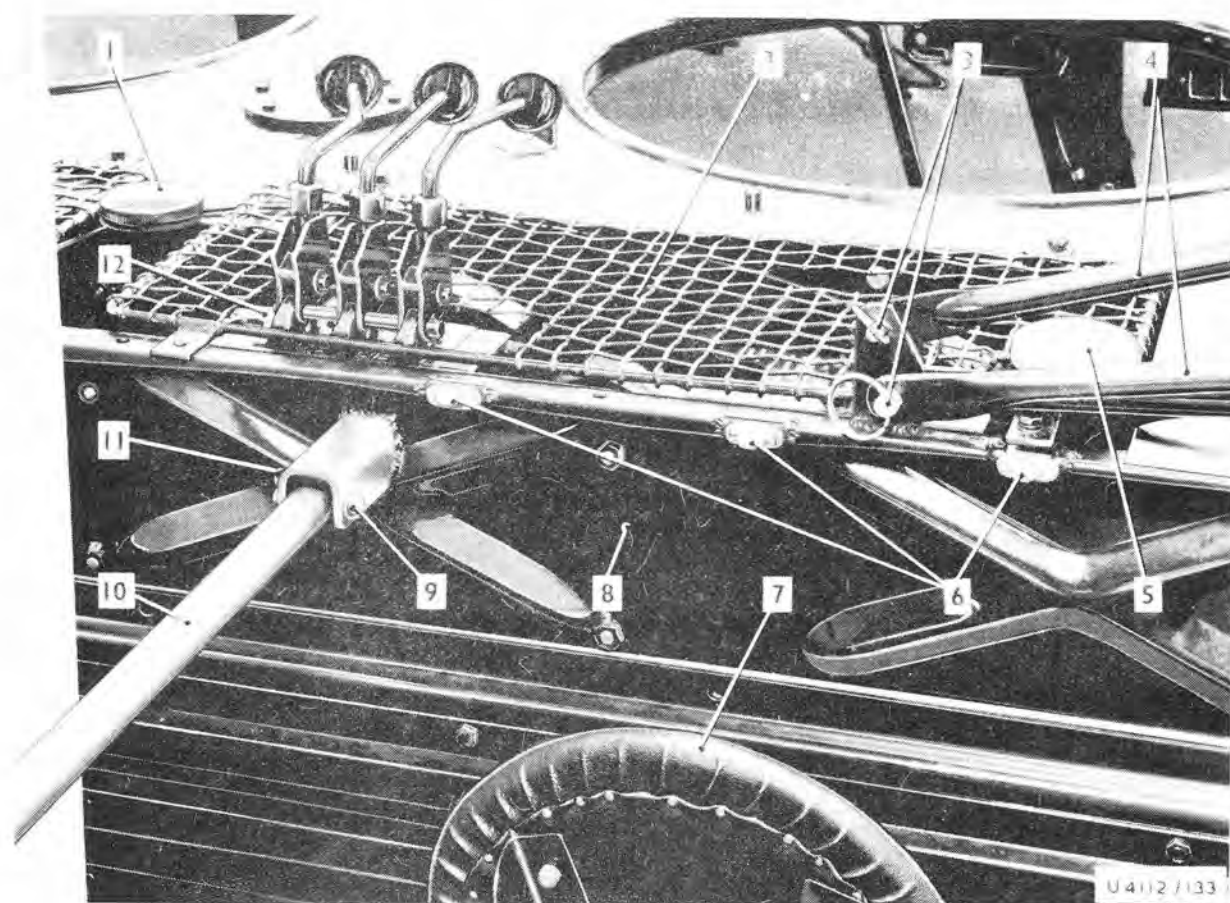


CONTENTS (Contd)

	<i>Page</i>
IGNITION SYSTEM	117
Distributor	117
Lubrication	117
TRANSMISSION	119
"No spin" differential	119
Clutch	119
To top up the hydraulic fluid tank	119
Gearbox	119
To top up the gearbox	120
To change the gearbox oil	121
To renew the filter element	123
Transfer box, centre bevel boxes and inner tracta joint housings	123
To top up the oil	124
To change the oil	125
Front and rear bevel box and inner tracta joint housings	125
To top up the oil	126
To change the oil	126
Speedometer drive housing	127
To top up the oil	127
Roadwheel hubs and outer tracta joint housings	127
To top up the oil	128
To change the oil	128
SUSPENSION AND ROAD WHEELS	129
Suspension	129
To lubricate the top link inner pivot bearings	129
To lubricate the bottom link inner pivot bearings	129
To lubricate the top and bottom link outer pivot bearings	129
Road wheels and tyres	131
To remove and refit	132
Tyre inflation	133
STEERING	134
Steering box	134
To top up the oil level	134
Steering linkage	135
To lubricate the steering drag links	135
To lubricate the steering side beam	135
Steering hydraulic fluid tank	136
To top up the oil level	136
BRAKES	136
Braking system	136
To top up the hydraulic fluid tank	136
Brake airpak	137
Draining the airpak	137
To lubricate the airpak	138
Brake adjustment	138
To check the brake pads for wear	138

STALWART MK2 COOLING SYSTEM



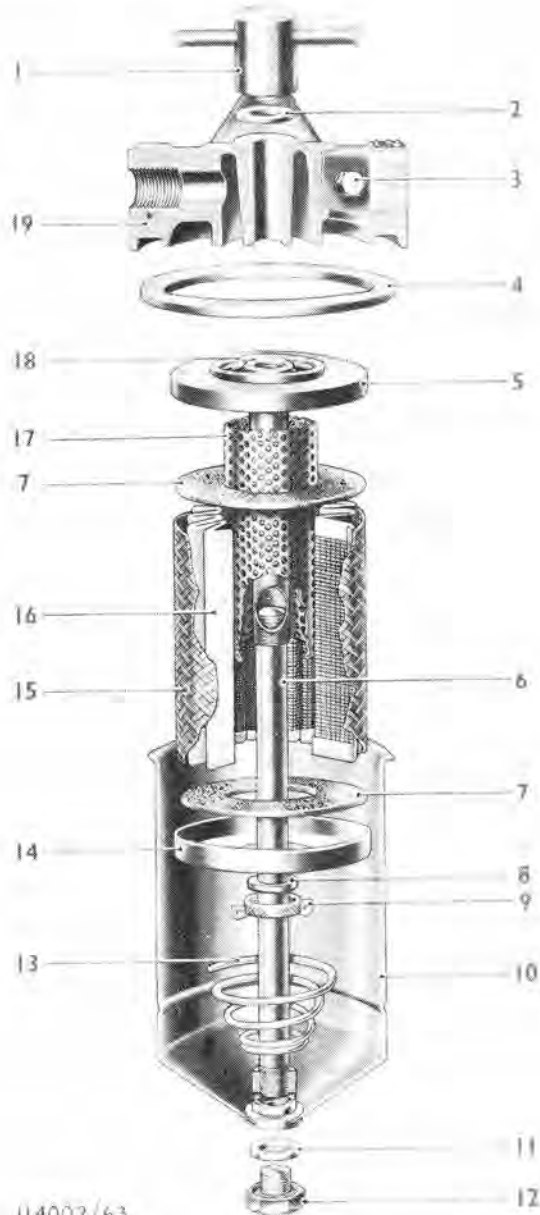


- | | |
|---|-------------------------------|
| 1 Crane - winch - steering hydraulic oil filler | 7 Crew seats |
| 2 Air intake grille | 8 Crew compartment headboard |
| 3 Quick release pins | 9 Retaining pins |
| 4 Canopy support frames | 10 Bulkhead support tube |
| 5 Engine oil filler | 11 Retaining pin clips |
| 6 Canopy securing turnbuckles | 12 Crane control valve blocks |

Fig 73 Engine air intake

CANOPY SUPPORT FRAMES

10. The crew canopy is supported by tubular metal support frames (fig.72(3)) at the left hand and right hand sides of the crane column. Each frame comprises three separate sections which pivot on mounting lugs welded to the rear of the cab roof and crew compartment bulkhead. Two locking bars secure each frame assembly in the raised position.

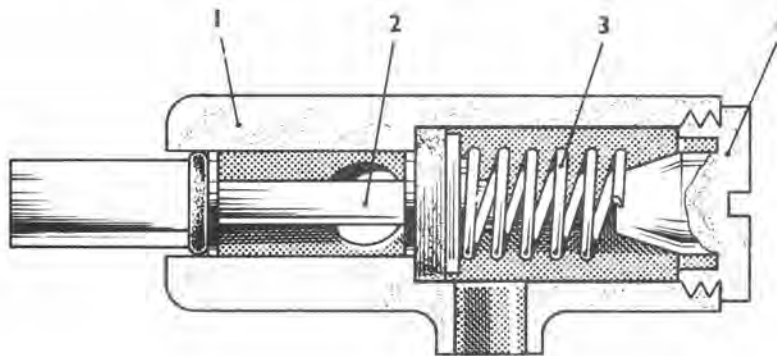


- 1 Wingnut
- 2 Washer
- 3 Air release plug
- 4 Rubber sealing ring
- 5 Centre stud
- 6 Centre rod
- 7 Gasket - cap
- 8 Gasket - element wingnut
- 9 Wingnut
- 10 Filter bowl
- 11 Washer
- 12 Drain plug
- 13 Spring
- 14 Bottom cap
- 15 Element casing - outer
- 16 Element
- 17 Element casing - inner
- 18 Body (head)
- 19 Filter head

Fig 35 Exploded view of fuel filter

04002/63

- (4) Position a suitable receptacle beneath the fuel filter to trap any escaping fuel.
- (5) Support the filter bowl (10), remove the wing nut (1) and washer (2) from the top of the filter head (19) and the filter bowl (10) from beneath.
- (6) Remove and discard the soiled filter element (15) but retain the spring.
- (7) Wash all parts thoroughly in gasoline and dry off.



- 1 Body
- 2 Valve plunger assembly
- 3 Spring
- 4 End stop

Fig 15B Drain tap

FAULT FINDING

U4164/133-

- 107N. (1) Check power supply available (engine running).
(2) Check switch is in the ON position.
(3) Check that plug is fully in socket.
(4) Check 60 amp fuse, see Page 63.

If vessel still does not heat up REPORT.

FROST PRECAUTIONS

108. Frost precautions must be taken according to Current Instructions.

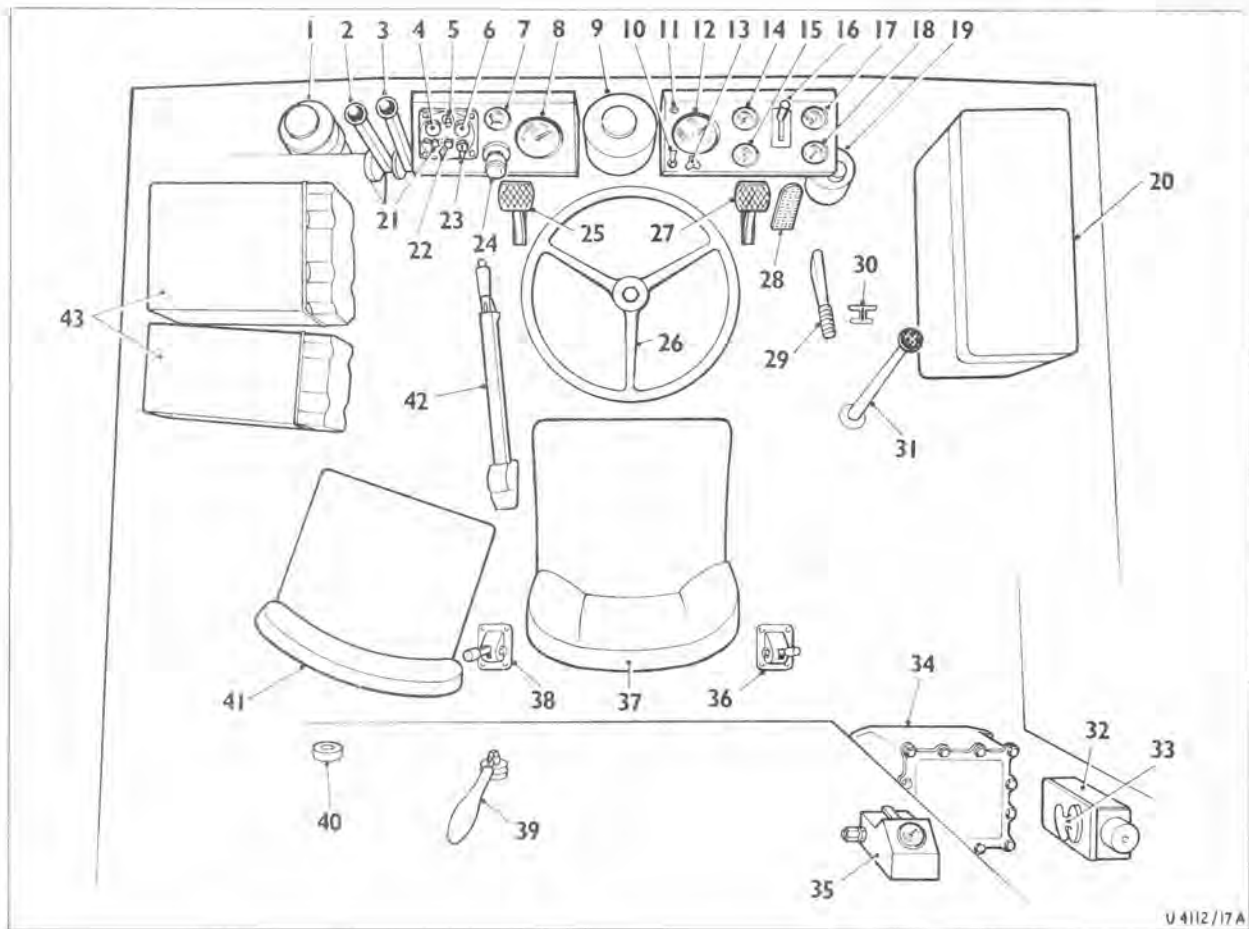
ANTI-FREEZER BRAKES

109. An anti-freezer unit containing methanol is included in the pipe line between the air cleaner and the air compressor. The methanol vapour will prevent the moisture in the air compressing system, which provides the power assistance for the brakes, from freezing thus preventing the various air valves "seizing up" with subsequent loss of braking efficiency. It is only necessary to fill the anti-freezer when an air temperature below freezing level is anticipated (see Special Servicing Instruction No.2).

To fill

110. (1) Open the budget locks and lift the third set of hinged floor sections.
(2) Unscrew the filler cap from the top of the anti-freezer bottle mounted on the outside of the right hand carburetter air cleaner.
(3) Fill to approximately half way, a ring on a tube inside the anti-freezer will indicate this point **Caution: This fluid is toxic and inflammable.**
(4) Refit the filler cap, ensuring that the sealing washer is in good condition.
(5) Close and lock the hinged floor sections.

(Amdt.2)



U 4112/17A

- | | |
|---|---|
| 1 Clutch hydraulic fluid tank | 22 Lighting switch |
| 2 Left-hand navigation steering lever | 23 Main indicator (ignition) switch |
| 3 Right-hand navigation steering lever | 24 Traffic horn button and dipswitch |
| 4 Engine oil pressure warning light | 25 Clutch pedal and hold out hook |
| 5 Panel light switch | 26 Steering wheel |
| 6 Main indicator (ignition) warning light | 27 Brake pedal |
| 7 Ammeter | 28 Accelerator pedal |
| 8 Tachometer | 29 Hand accelerator lever |
| 9 Brake hydraulic fluid tank | 30 Roadwheel position indicator |
| 10 Turnlight switch | 31 Gear lever |
| 11 Turnlight warning light | 32 Distribution panel |
| 12 Speedometer | 33 Battery master switch |
| 13 Windscreen wiper switch | 34 Generator panel |
| 14 Engine oil pressure gauge | 35 Tyre inflator |
| 15 Fuel gauge | 36 Propulsion (Marine) unit control lever |
| 16 Carburettor choke control | 37 Driver's seat |
| 17 Coolant temperature gauge | 38 Forward/reverse gear lever |
| 18 Air pressure gauge | 39 Bilge pump handle |
| 19 Choke control hydraulic fluid tank | 40 Fuel tap (handwheel) |
| 20 Batteries | 41 Passenger's seat |
| 21 Starter switch | 42 Handbrake |
| | 43 Radio set |

Fig 7 Layout of driver's cab - Mk 1 Vehicle